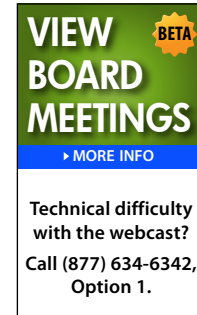


Watch Illinois Tollway Meeting Webcasts

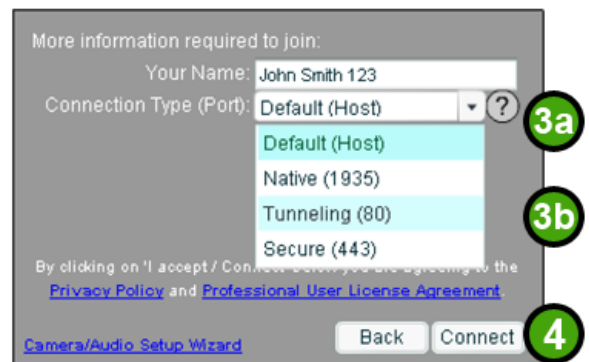
1) Click on this button:



2) Next to "Your Name" enter your first and last name. *Please note: Names must be unique. You can make yours unique by adding a number.*

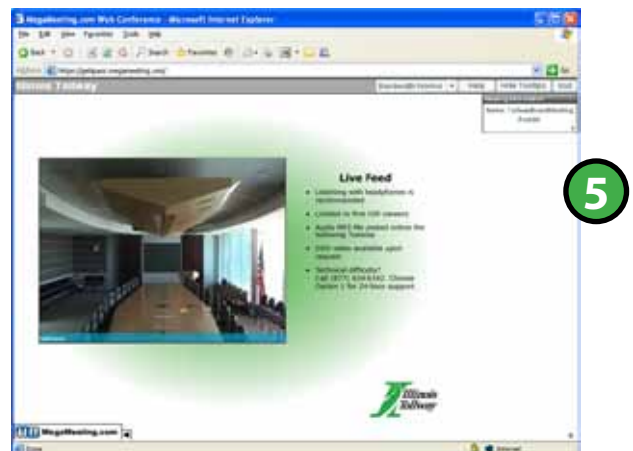


3) The "Connection Type (Port)" should be set to
(a) **Default (Host)**. If you get a message requesting you try another connection type, choose
(b) **Tunneling (80)**.



4) Click "Connect."

5) You are now connected to the Meeting webcast.

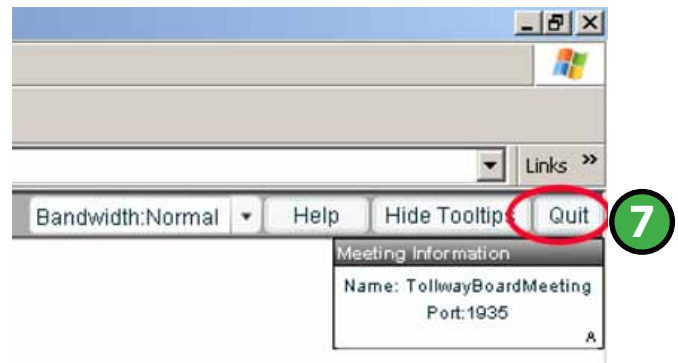


Watch Illinois Tollway Meeting Webcasts

- 6) If you see this message, it means the meeting is full. A beta version of audio will be available three business days following the meeting.



- 7) When finished watching, click "Quit" at the upper right corner of the viewing window in order to allow others to view the Meeting Webcast.



- Questions or comments submitted online will not be part of the public comments. Questions? Comments? Visit our *Contact Us* section.
- Technical difficulties? Call (877) 634-6342 and choose Option 1.