

PACE ILLINOIS ROUTE 390 TOLLWAY

CORRIDOR SERVICE STUDY



**CDM
Smith**

December LAC Presentation



Agenda

- Welcome
- Project Overview & Updates
- Focus Group Feedback
- Existing Conditions & Market Assessment
- Evaluation Criteria
- Initial Corridors of Interest
- Next Steps



Team

- **Pace**
 - Erik Llewellyn

- **CDM Smith (Consultant)**
 - Steve Goodreau
 - Greg Saur

- **Metro Strategies (Consultant)**
 - Tammy Wierciak
 - Colin Fleming



Project Overview

GOALS: To create an incremental transit plan for the Rt. 390 Tollway Corridor that will increase transit market share, intensify transit oriented land uses and create economic development opportunities for communities

Keys Elements

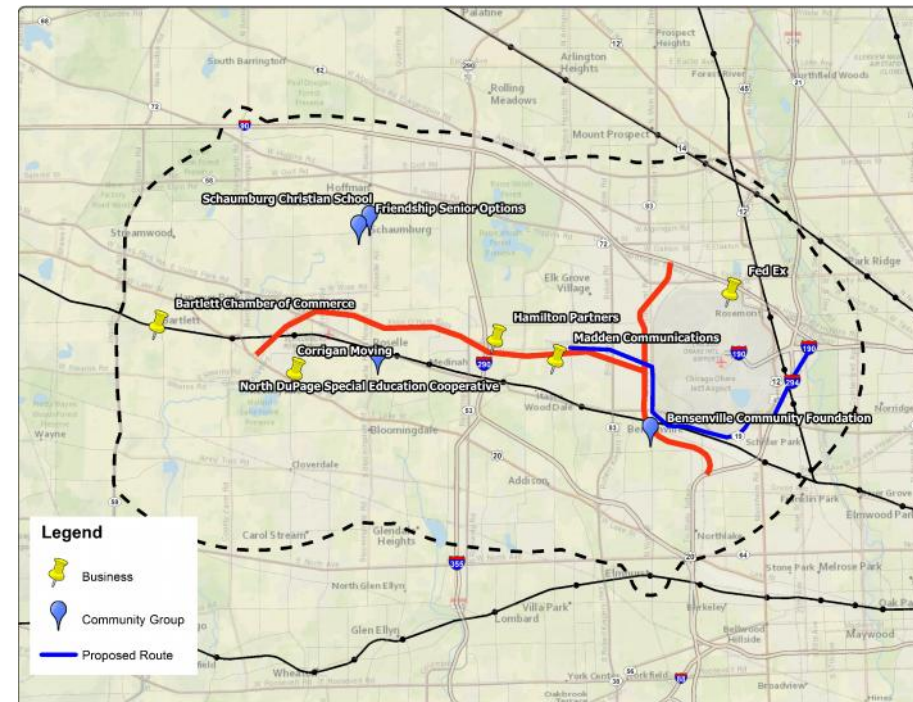
- Integrate Short-term, Medium-term, and Long-term Improvements
- Develop Flexible Approach to Adapt to Changing Environment
- Make Public Transportation Connectivity Seamless
- Build Upon Previous Studies
- Conduct Effective Interagency Coordination

Project Updates

- Existing Conditions & Market Assessment
- Alternatives Analysis
- Other Public Outreach
 - Technical Advisory Meeting
 - Focus Group Meetings with Community Organizations & Local Businesses

Focus Group Feedback

- **Community Groups**
 - 4 participants: schools, senior living, community foundation
 - Focus areas: Schaumburg Town Square, public facilities
 - Convenience, cost, and communication
- **Business Groups**
 - 6 participants: chamber of commerce, local businesses, national shipper, real estate
 - Focus areas: transfer to existing stations, industrial areas west of O'Hare
 - Transportation options/access is key for recruitment/retention of employees
 - Leverage technology



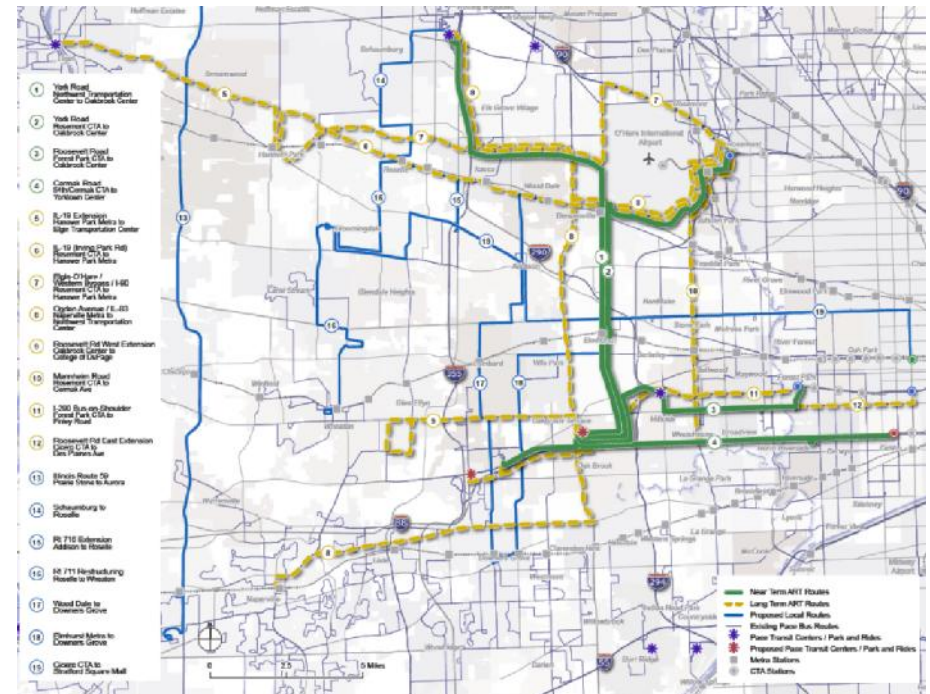
Locations of Participants

Technical Advisory Committee Meeting

- Representatives from: Illinois Tollway, RTA, CTA, Metra, CMAP, Cook County DOT, DuPage County DOT, and Chicago Department of Aviation
- Study Area is generally low density but some pockets of employment, especially industrial
- Last mile issues connections are a challenge
- Connecting to and around O'Hare is a major challenge; western terminal only has potential in long term
- In terms of transit, IL 390 is different from I-90

Existing Conditions: Plans & Policies

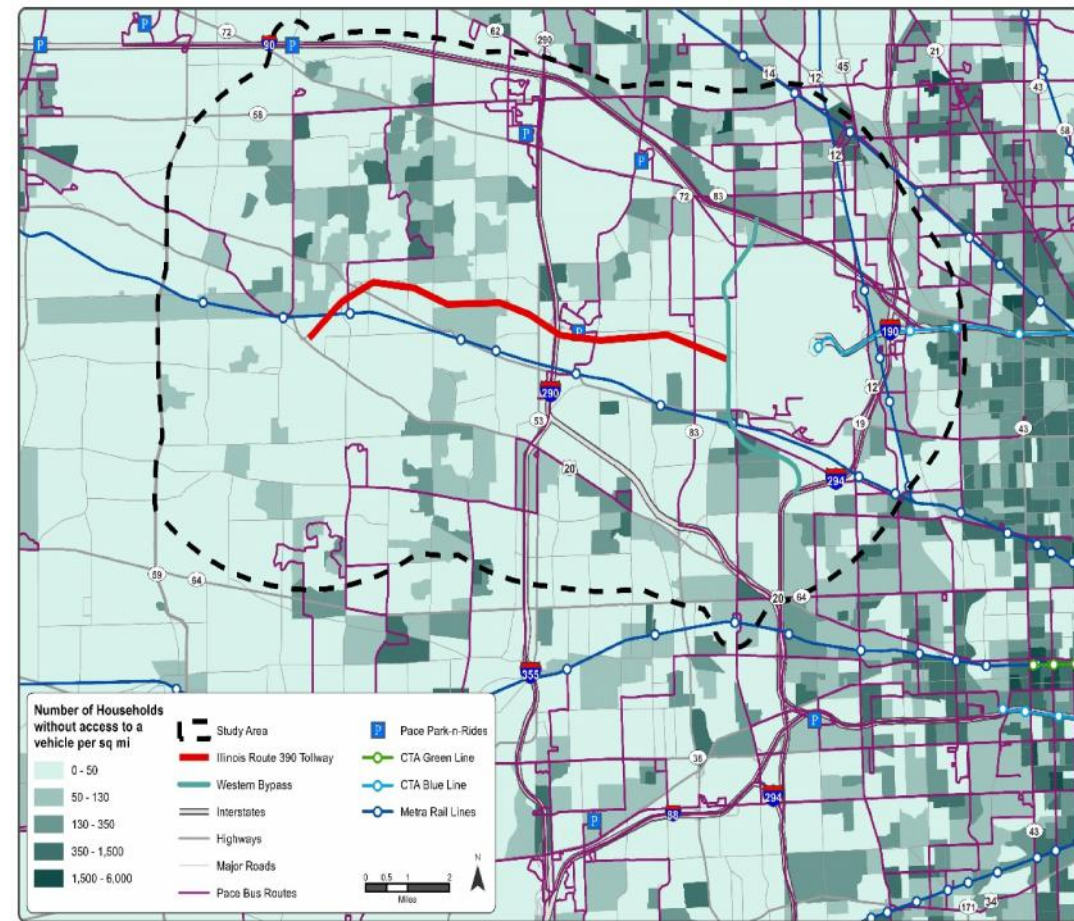
- Evaluated 28 plans from following agencies:
 - Pace Suburban Bus
 - RTA
 - Metra
 - CMAP
 - DuPage County
 - Cook County
 - IDOT
 - Cities of Des Plaines and Wood Dale
 - Villages of Mount Prospect, Bensenville, Roselle, and Hanover Park



Pace: Cook DuPage Area Rapid Transit Investment Plan (2014)

Existing Conditions & Market Assessment

- Density is relatively low but some demographics and land uses pockets that are favorable to transit
- Transit service is already provided through most of study area
- Except for trips to CBD, most travel is local



Households without a Vehicle

Existing Conditions & Market Assessment: TAC Feedback

- What other existing/future considerations should be considered?
- What other concerns should be addressed?

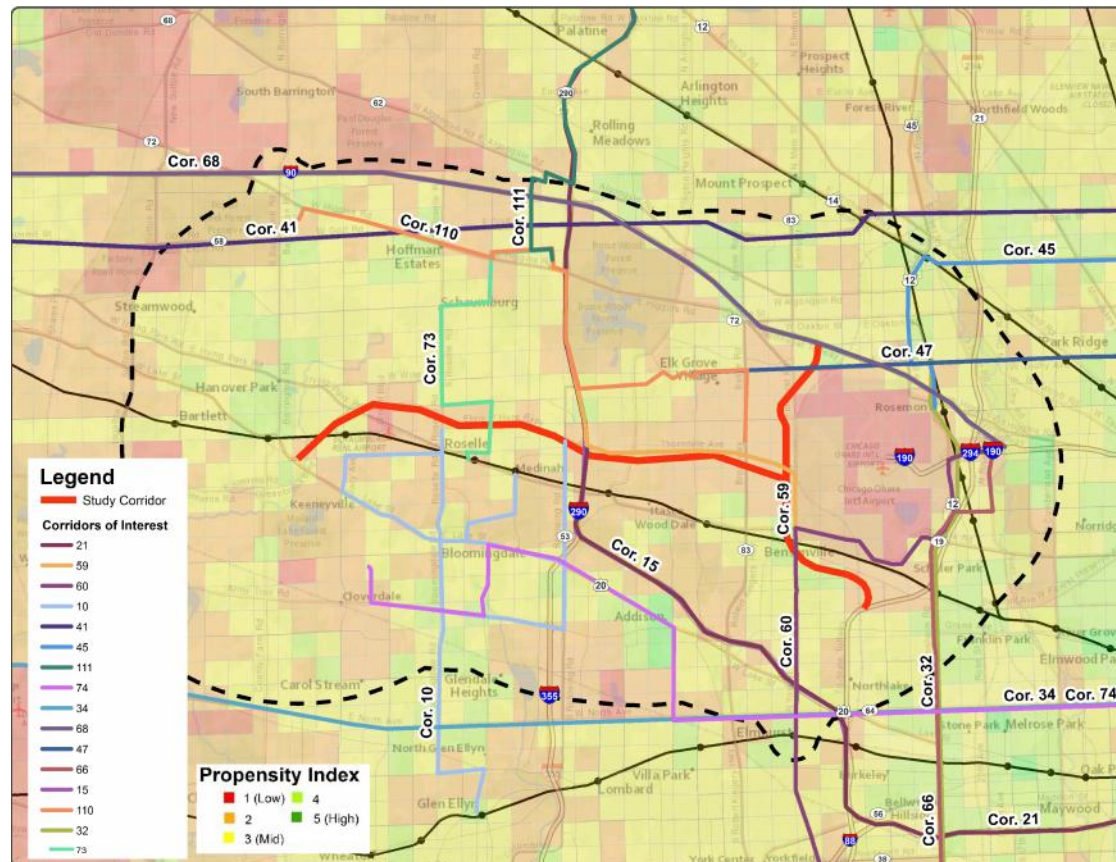
Corridor Evaluation Criteria

Category	Measure	Weighting
Trip Density	Work	15%
	Non-Work	10%
	Airport	5%
	ADA	10%
	Dial a Ride	10%
Indexes	Access	5%
	Propensity	10%
	Gap	5%
	Pedestrian	5%
Mode Split	Transit	3%
	Carpool	2%
Connections	Pace	5%
	CTA	5%
	Metra	5%
	City Centers	5%

- Starting point is to evaluate proposed corridors from past studies
- Criteria establishes quantitative measures to rank
- Weightings can be adjusted based on feedback

Corridors of Interest – Routes

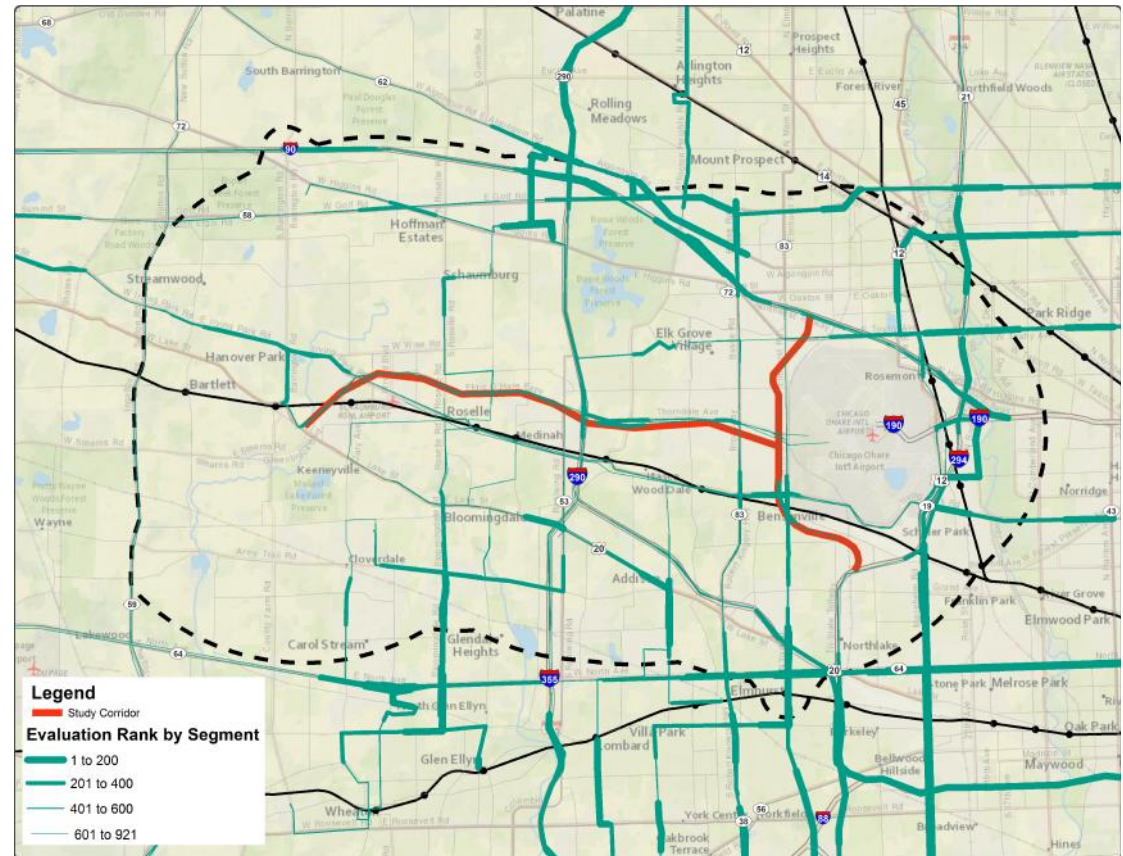
- 15 most promising routes based on current evaluation criteria
- Connection to Schaumburg based on Focus Group Feedback



Corridors of Interest + Transit Propensity

Corridors of Interest – Segments

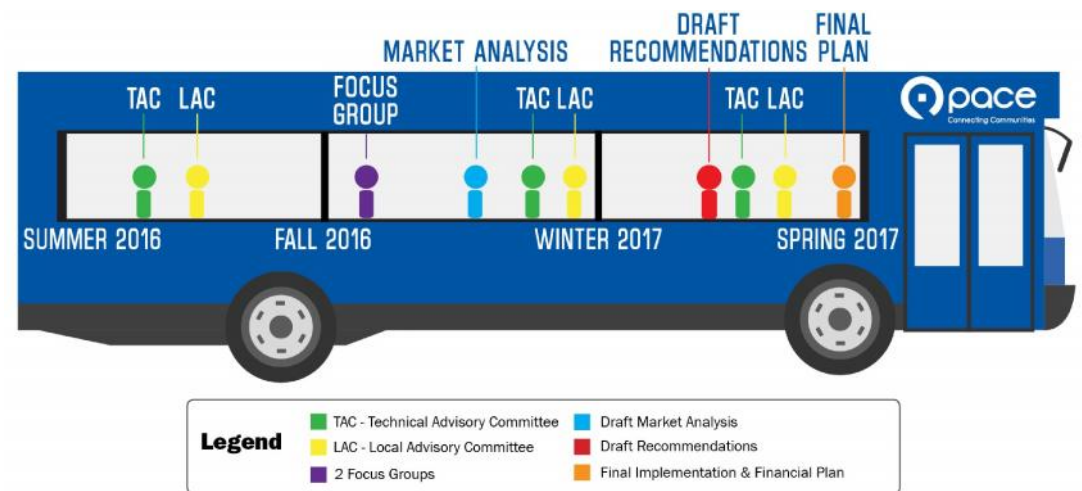
- 1 mile segments of corridors (921 total)
- Captures hot spot areas
- Does NOT capture full route demand



Segments of Interest

Study Next Steps

1. Finalize alternatives development
2. Select most promising routes for short-, medium, and long-term
3. Alternative evaluation workshop
4. Draft recommendations
5. Final plan



PACE ILLINOIS ROUTE 390 TOLLWAY

CORRIDOR SERVICE STUDY



Thank You!

Visit Project Website for Updates

[Pacebus.com/sub/initiatives/route_390_study.asp](https://pacebus.com/sub/initiatives/route_390_study.asp)