



---

# Elgin O'Hare Western Access Project

## *Local Advisory Committee*

May 13, 2019

---

# Today's Agenda

**Feedback on local issues**

**U.S. Route 20 Interchange Improvement Study**

**Project and construction status updates**

**Chicago Department of Aviation – Plans for Western Access**

**Updates from Cook and DuPage counties**

**Illinois Route 390 performance review**

**Next steps**

---

# U.S. Route 20 Interchange Improvement Study

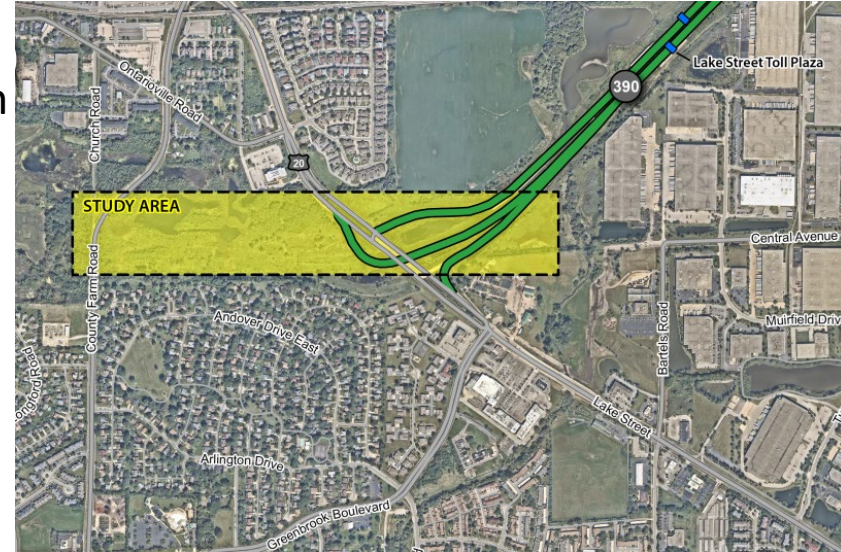
# U.S. Route 20 Interchange Improvement Study

## Phase 1 study for interchange improvements

- Consider ramp extension from U.S. Route 20/Lake Street to County Farm Road to address local traffic issues
- Identify environmental concerns
- Preliminary concept design
- Follow Tollway and federal process

## Timeline

- Study started in early 2019
- Currently collecting survey data
- Public meeting in summer 2019
- Anticipated 18-month schedule for completion of Phase 1



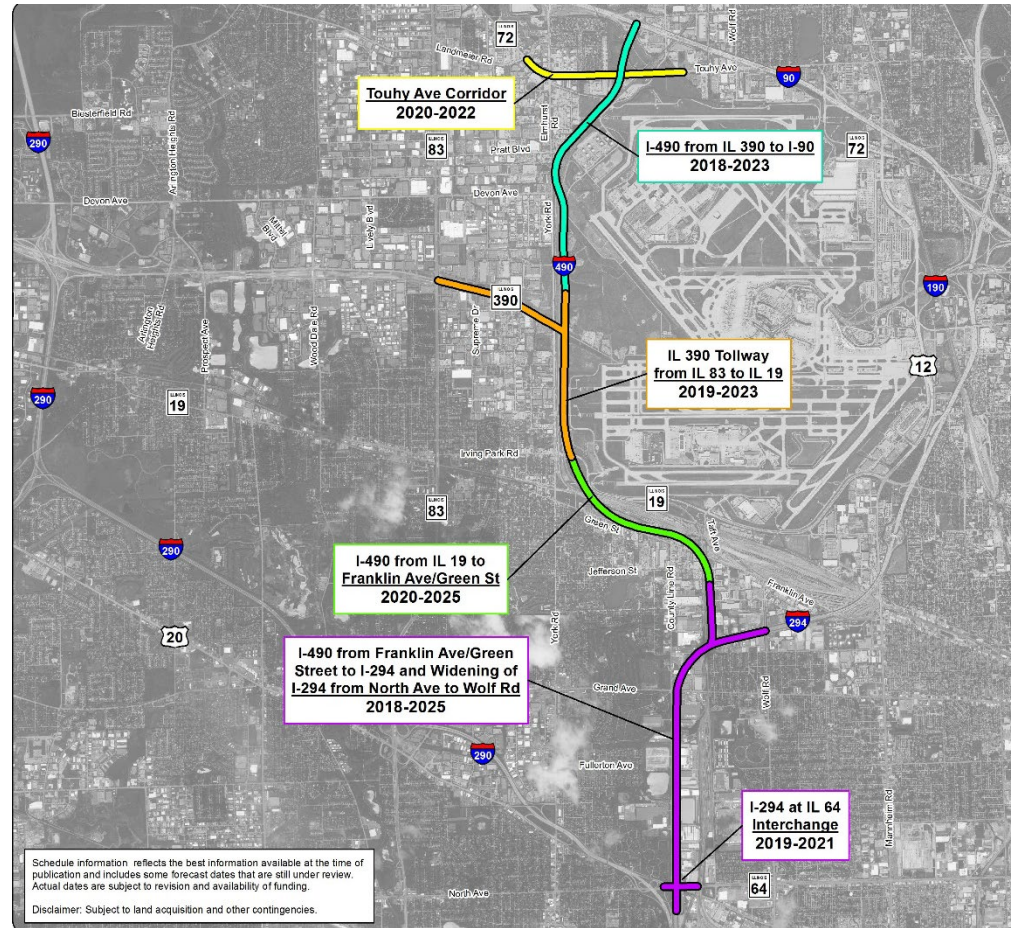
---

# Project Status Update

The Illinois Tollway  
**DRIVING**  
THE FUTURE



# I-490 Tollway Construction Timeline





---

# Public Outreach

## Since last LAC meeting

- Local coordination – 39 meetings (since January 14, 2019)
- Franklin Park Business Appreciation Luncheon – May 7, 2019
- DuPage Mayors and Managers – January 22, 2019
- Northwest Municipal Conference – January 17, 2019

## Upcoming events

- Northwest Municipal Conference Transportation Committee meeting – May 23, 2019
- DuPage Mayors and Managers Transportation Policy Committee meeting – May 28, 2019
- Invite us to your event!



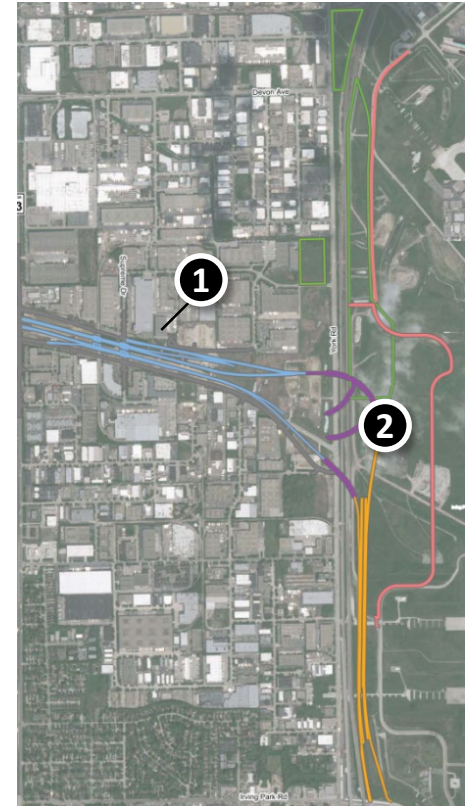


---

# Construction Status Update

# I-490 Interchange/Western Access Construction

- ① I-490 Interchange – Illinois Route 83 to York Road construction**  
Scheduled: 2019 – 2023
- ② I-490 Interchange – Western access ramp construction**  
Scheduled: 2019 - 2023



# I-490 Tollway South Segment Construction

## ① North Avenue Interchange Project – Cook County

Scheduled: 2019 – 2020

## ② I-294 (Grand Avenue to Wolf Road) and I-490 Ramp

Scheduled: 2020 – 2023

## ③ County Line Road (I-294 Ramp to Grand Avenue)

Scheduled: 2020 – 2021



# I-490/I-294 Interchange

Presented by EOWA Project Team on May 13, 2019





# I-490 Tollway North Segment Construction

- ① I-490/I-90 Interchange bridges/  
Higgins Creek**  
Scheduled: 2018 – 2019
- ② I-490/I-90 Interchange bridges and  
fuel station removal**  
Scheduled: 2018 – 2019
- ③ Touhy Avenue Reconstruction  
Project – Cook County**  
Scheduled: 2020 – 2022



# I-490/I-90 Interchange

Presented by EOWA Project Team on May 13, 2019



---

# **Western Access Chicago Department of Aviation's Plans**



# Western Access I-490 Interchange



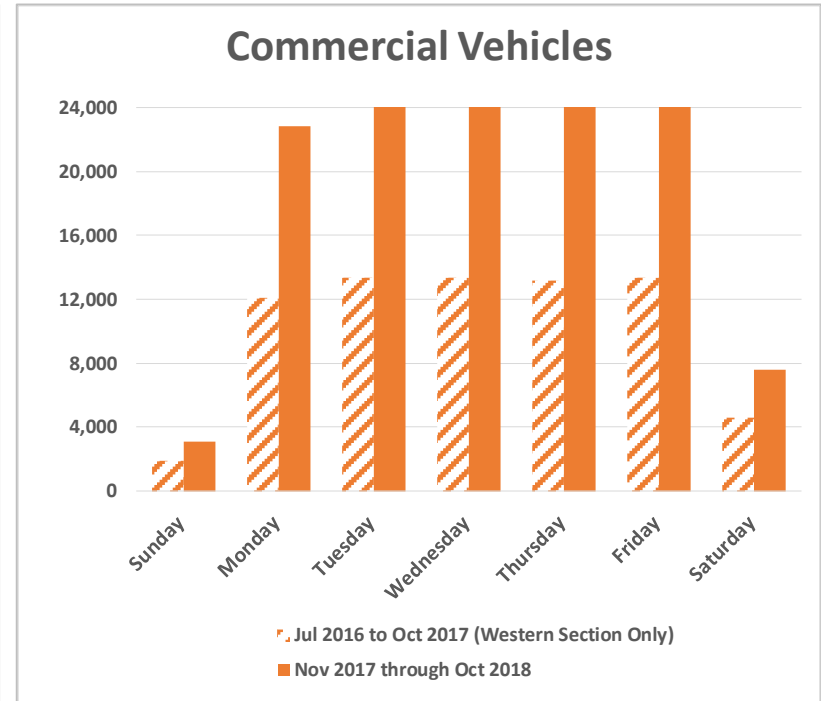
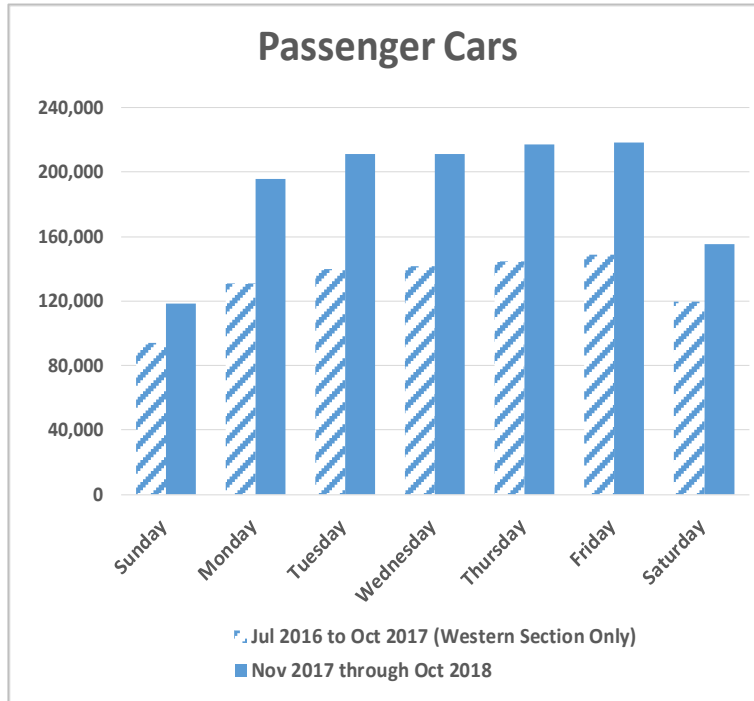
---

# County Updates

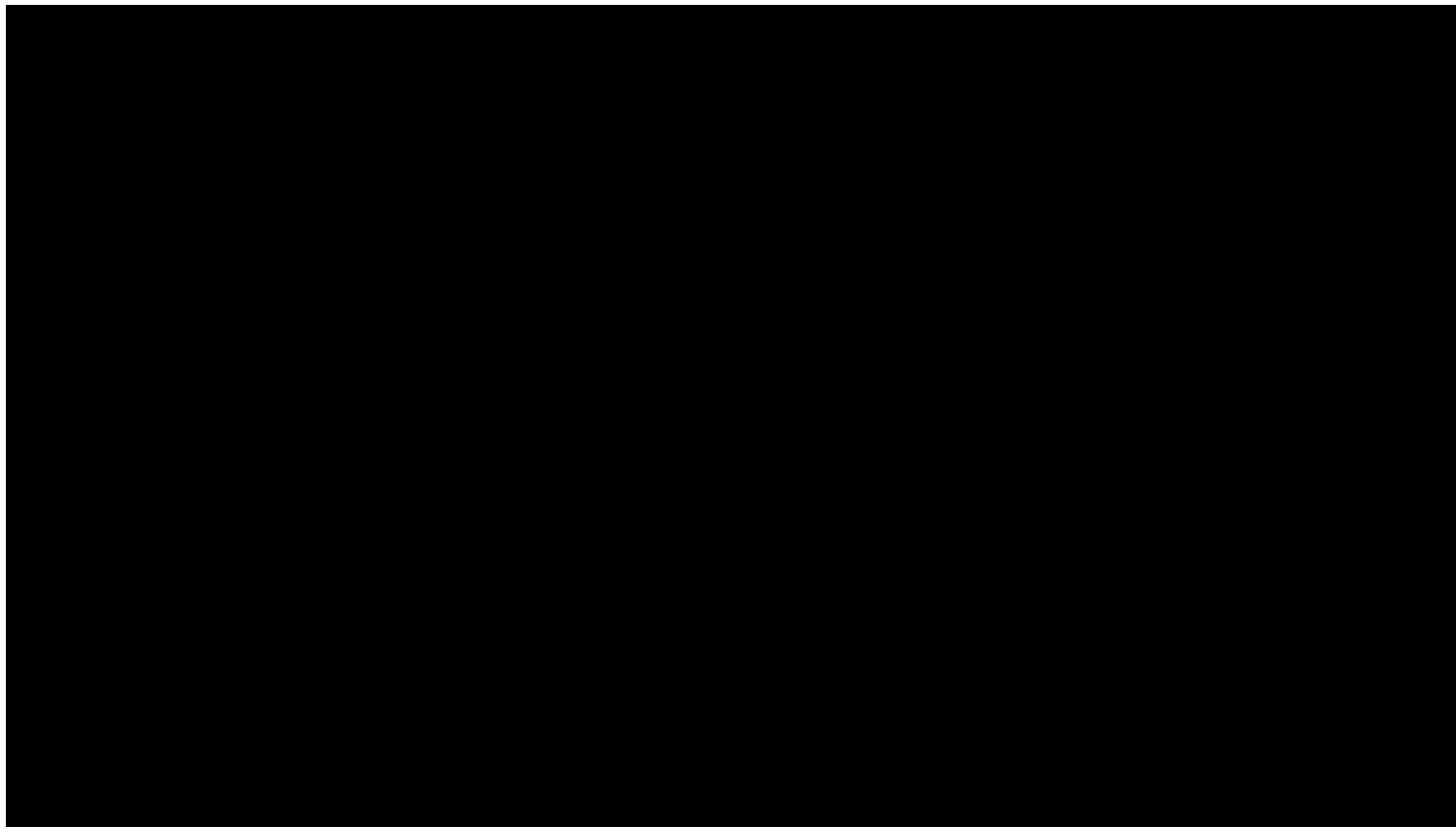
---

# **Illinois Route 390 Performance Review**

# Average Transactions Per Day



## Before and After Tolling - Change in Average Weekday Traffic



# Before And After Tolling – Parallel Routes

## Change In Travel Times – West of I-290

Route	From	To	Before Tolling (minutes)		March 2019 (minutes)		Change (minutes)	
			EB	WB	EB	WB	EB	WB
Wise Rd. and IL 19	Barrington Rd.	I-290	12.4	12.8	14.0	14.5	1.6	1.7
IL 19 / Irving Park	Barrington Rd.	I-290	13.3	15.6	13.2	14.0	-0.1	-1.6
US 20 / Lake St.	Barrington Rd.	I-290	10.6	13.0	12.7	12.4	2.1	-0.6

*EB a.m. peak period: 6 a.m. to 9 a.m.*

*WB p.m. peak period: 4 p.m. to 7 p.m.*

# Before And After Tolling – Parallel Routes

## Change In Travel Times – East of I-290

Route	From	To	Before Tolling (minutes)		March 2019 (minutes)		Change (minutes)	
			EB	WB	EB	WB	EB	WB
Thorndale Ave (Frontage Roads)	I-290	IL 83	7.0	7.2	6.7	5.6	-0.3	-1.6
Biesterfield Rd/Arl. Heights Rd/Landmeier Rd	I-290	IL 83	9.5	10.0	9.5	9.7	-0.1	-0.3
Biesterfield Rd/Elk Grove Blvd/Landmeier Rd	I-290	IL 83	10.9	10.9	11.1	10.8	0.2	-0.1
Devon Ave	I-290	IL 83	7.0	6.6	7.1	6.9	0.2	0.3
Irving Park Rd	I-290	IL 83	7.5	7.8	7.8	7.2	0.3	-0.6
I-290	I-290	IL 83	3.7	4.1	3.9	4.1	0.2	0.1

*EB a.m. peak period: 6 a.m. to 9 a.m.*

*WB p.m. peak period: 4 p.m. to 7 p.m.*



# Operational Improvements And Impacts

**Illinois Route 390, between I-290 and Illinois Route 83, opened to tolling on November 1, 2017**

**Speeds on both the western and eastern sections of Illinois Route 390 and competing routes have been steady since opening day**

- Average speed of 65 mph on Illinois Route 390 in the first quarter of 2019

**Frontage roads serving the Illinois Route 390 facility have also shown steady speeds since the opening of the eastern extension**

- Average speed of 32 mph on the frontage roads in the first quarter of 2019



# Next Steps/ Next Meeting

## Next meeting

- September 9, 2019?

## Location

- TBD

## Topics

- ???

---

# Questions?

---

# THANK YOU