

ELGIN O'HARE WESTERN ACCESS PROJECT



Overview

Designated a "Project of National and Regional Significance" by federal transportation legislation, the \$3.4 billion Elgin O'Hare Western Access Project represents a fiscally responsible approach to address the area's diverse travel needs – improving travel efficiency, providing western access to O'Hare International Airport, creating opportunities for jobs and economic development, enhancing multi-modal connections and reducing congestion.

The project includes 17 miles of new roads with 15 new or improved interchanges as part of a new, all-electronic toll road that includes rehabilitating and widening Illinois Route 390, formerly known as the Elgin O'Hare Expressway, and extending it east along Thorndale Avenue to O'Hare and building a new roadway around the western border of O'Hare linking the Jane Addams Memorial Tollway (I-90) and the Tri-State Tollway (I-294).

Broadly supported by local governments, the project is the result of bipartisan consensus reached by the Elgin O'Hare Advisory Council in 2011, which brought together local communities, business, labor, public finance and regional planning and transportation experts.

The project includes:

- Improvements to the existing Illinois Route 390 between Lake Street (U.S. Route 20) and Meacham/Medinah Road with ramp improvements at Irving Park Road and Roselle Road and an improved interchange at Meacham/Medinah Road.
- Extending Illinois Route 390 to O'Hare and constructing or improving interchanges at Rohlwing Road (Illinois Route 53), I-290, Park Boulevard, Arlington Heights Road/Prospect Avenue, Wood Dale Road and Illinois Route 83.
- Providing direct access to O'Hare property from York Road via a new ramp crossing over York Road and the Union Pacific Railroad and Canadian Pacific Railway.
- Enhancing southern access to O'Hare via a new, four-lane Taft Avenue Connector between Irving Park Road and Franklin Avenue with a new crossing over the Bensenville Rail Yard.
- Constructing a new road connecting I-90 and I-294 west of O'Hare and interchanges at I-294, Green Street, Franklin Avenue, Irving Park Road, Illinois Route 390, Higgins Road (Illinois Route 72) and I-90.
- Constructing a new, full-access interchange at I-90 and Elmhurst Road.
- Constructing a new, partial interchange at I-294 and North Avenue (Illinois Route 64).

As part of its *Move Illinois* Program, the Illinois Tollway has committed \$3.1 billion toward the \$3.4 billion needed to begin building the EOWA Project in 2013. Funding sources to close the \$300 million gap are currently being pursued by DuPage County and local officials.

To date, more than \$141 million of the \$300 million funding gap has been identified. DuPage County committed to a \$25 million contribution of land along Thorndale Avenue. DuPage and Cook Counties have secured \$95 million in Congestion Mitigation and Air Quality (CMAQ) Improvement Program funding. Other in-kind donations will come from Cook County, the Village of Franklin Park and the City of Northlake.

Under the continued leadership of DuPage and Cook Counties, the project team anticipates that by 2025 it will be able to secure additional grant funding or in-kind contributions needed for design and construction.



For more information,
visit www.illinoistollway.com or call 1-800-TOLL-FYI



BENEFITS

The EOWA Project is expected to enhance economic development and travel performance in the region. The project will:

- Create as many as to 65,000 direct and indirect jobs by 2040 when combined with completion of the western terminal at O'Hare International Airport.
- Provide new access to the west side of O'Hare via York Road and south side of O'Hare via Taft Avenue.
- Save drivers \$145 million in time and fuel annually by 2040.
- Decrease traffic on local roads by more than 16 percent during rush hour and reduce delays on local roads by 24 percent.
- Accommodate three times as many vehicles per day as local roads carry now.
- Reduce travel time by more than seven minutes for the 11-mile trip between the west side of O'Hare and Lake Street (U.S. Route 20) – a savings of 25 percent.
- Relieve congestion near the existing I-290 and Thorndale Avenue Interchange, where construction of new Rohlwing Road Bridge and interchanges at I-290, Park Boulevard and Arlington Heights Road/Prospect Avenue will reduce travel times by up to 35 percent.

BUILDING GREEN

The Tollway is committed to "Building Green" and minimizing the environmental impact of construction by reducing, recycling and reusing materials. In addition, the EOWA Project will feature the restoration, enhancement and protection of wetlands to increase the quality and quantity of the state's wetland resources. The Tollway will implement best management practices to address water quality and manage stormwater runoff during construction, operation and maintenance of the roadway. The project will also feature the construction of noisewalls and pavement surface treatments to reduce traffic noise. Sustainable practices will be considered in all aspects of project implementation as outlined in the Elgin O'Hare Advisory Council's final report.

MAJOR CONSTRUCTION ACTIVITIES

Construction of the EOWA Project began in 2013 and includes the major early milestones consisting of:

2015

- Completing Illinois Route 390 improvements from Lake Street (U.S. Route 20) to Rohlwing Road (Illinois Route 53)
- Completing new Rohlwing Road Bridge
- Completing new flyover ramp from westbound I-290 to westbound Illinois Route 390

2015 through 2017

- Completing new interchange on Jane Addams Memorial Tollway (I-90) at Elmhurst Road
- Completing new interchange at Illinois Route 390/I-290
- Constructing Illinois Route 390 from Rohlwing Road to Illinois Route 83

2016 through 2025

- Constructing a new toll road connecting I-90 and Tri-State Tollway (I-294) on the west side of O'Hare
- Constructing new roadways providing southern access into O'Hare International Airport via Taft Avenue

2017 through 2019

- Constructing Illinois Route 390 from Illinois Route 83 east to O'Hare and south to Illinois Route 19
- Constructing a new ramp providing western access into O'Hare via York Road
- Constructing a new partial interchange on I-294 at North Avenue (Illinois Route 64)

2017 through 2020

- Constructing Touhy Avenue improvements

LOCAL ADVISORY COMMITTEE

As part of the EOWA Project, the Illinois Tollway has created a Local Advisory Committee to provide input and help guide construction of the EOWA through 2025.

Guidelines approved by the Tollway's Board of Directors call for the Local Advisory Committee to work with the Illinois Tollway and the Illinois Department of Transportation (IDOT) to address local construction issues, such as noise abatement, landscaping options, property access and use, as well as drainage and utility issues. The committee also has the option to explore potential interest in community partnerships for aesthetic additions and bicycle and pedestrian enhancements, as well as sustainability initiatives and economic development opportunities for the corridor as a whole.

Each of the 19 communities and townships along the EOWA Project corridor has designated a member on the committee. In addition, both Cook and DuPage Counties have designated a representative to serve as a special liaison to the committee.

All meetings will be open to the public and information will be available on the Illinois Tollway's website at www.illinoistollway.com.

For more information, email: EOWAinfo@getipass.com.








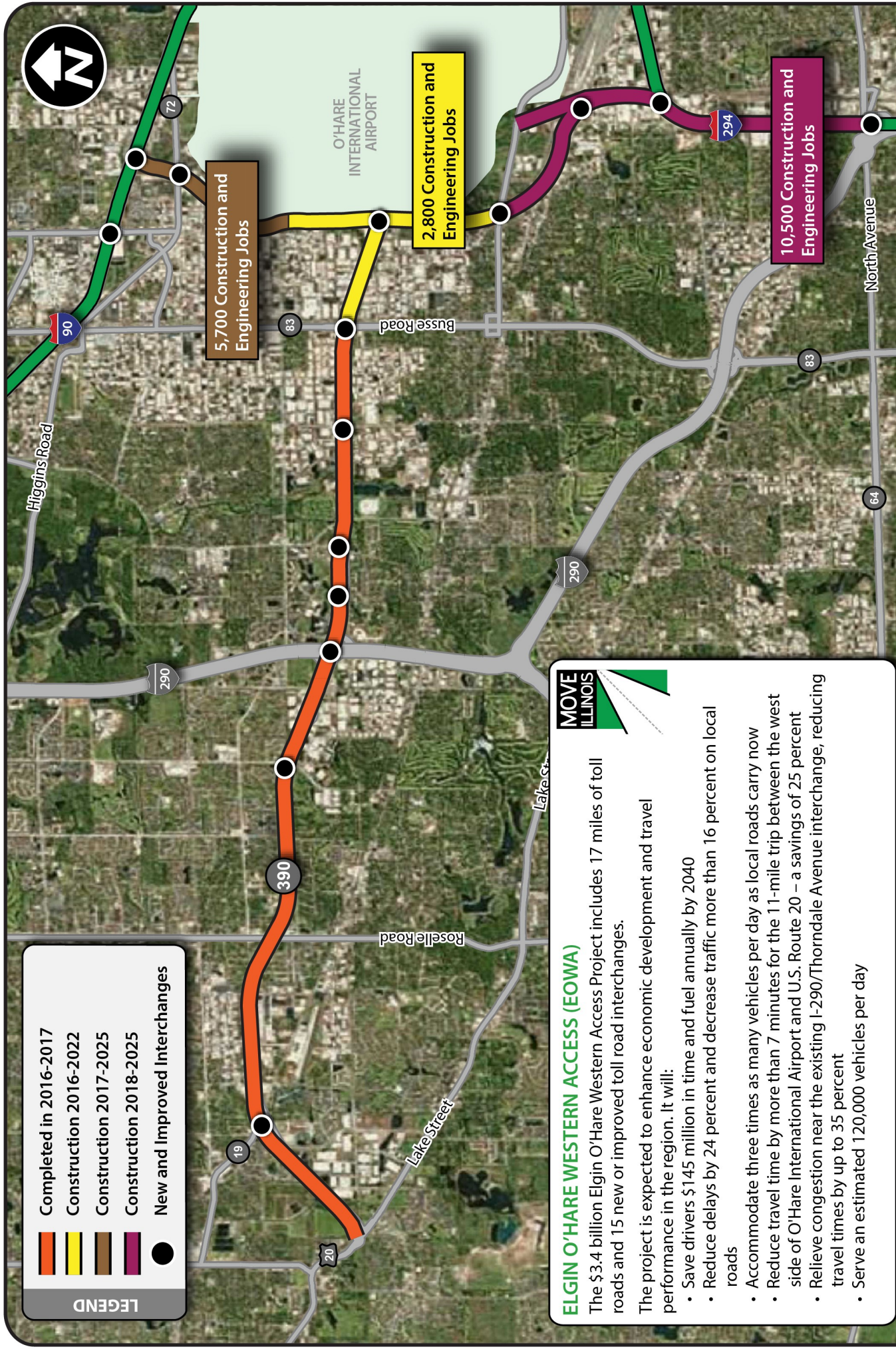
5,700 Construction and Engineering Jobs

2,800 Construction and Engineering Jobs

10,500 Construction and Engineering Jobs

LEGEND

-  Completed in 2016-2017
-  Construction 2016-2022
-  Construction 2017-2025
-  Construction 2018-2025
-  New and Improved Interchanges



ELGIN O'HARE WESTERN ACCESS (EOWA)

The \$3.4 billion Elgin O'Hare Western Access Project includes 17 miles of toll roads and 15 new or improved toll road interchanges.

The project is expected to enhance economic development and travel performance in the region. It will:

- Save drivers \$145 million in time and fuel annually by 2040
- Reduce delays by 24 percent and decrease traffic more than 16 percent on local roads
- Accommodate three times as many vehicles per day as local roads carry now
- Reduce travel time by more than 7 minutes for the 11-mile trip between the west side of O'Hare International Airport and U.S. Route 20 – a savings of 25 percent
- Relieve congestion near the existing I-290/Thorndale Avenue interchange, reducing travel times by up to 35 percent
- Serve an estimated 120,000 vehicles per day



ELGIN O'HARE WESTERN ACCESS PROJECT A New, All-Electronic Toll Road

MOVE ILLINOIS

Updated: 10/30/17