




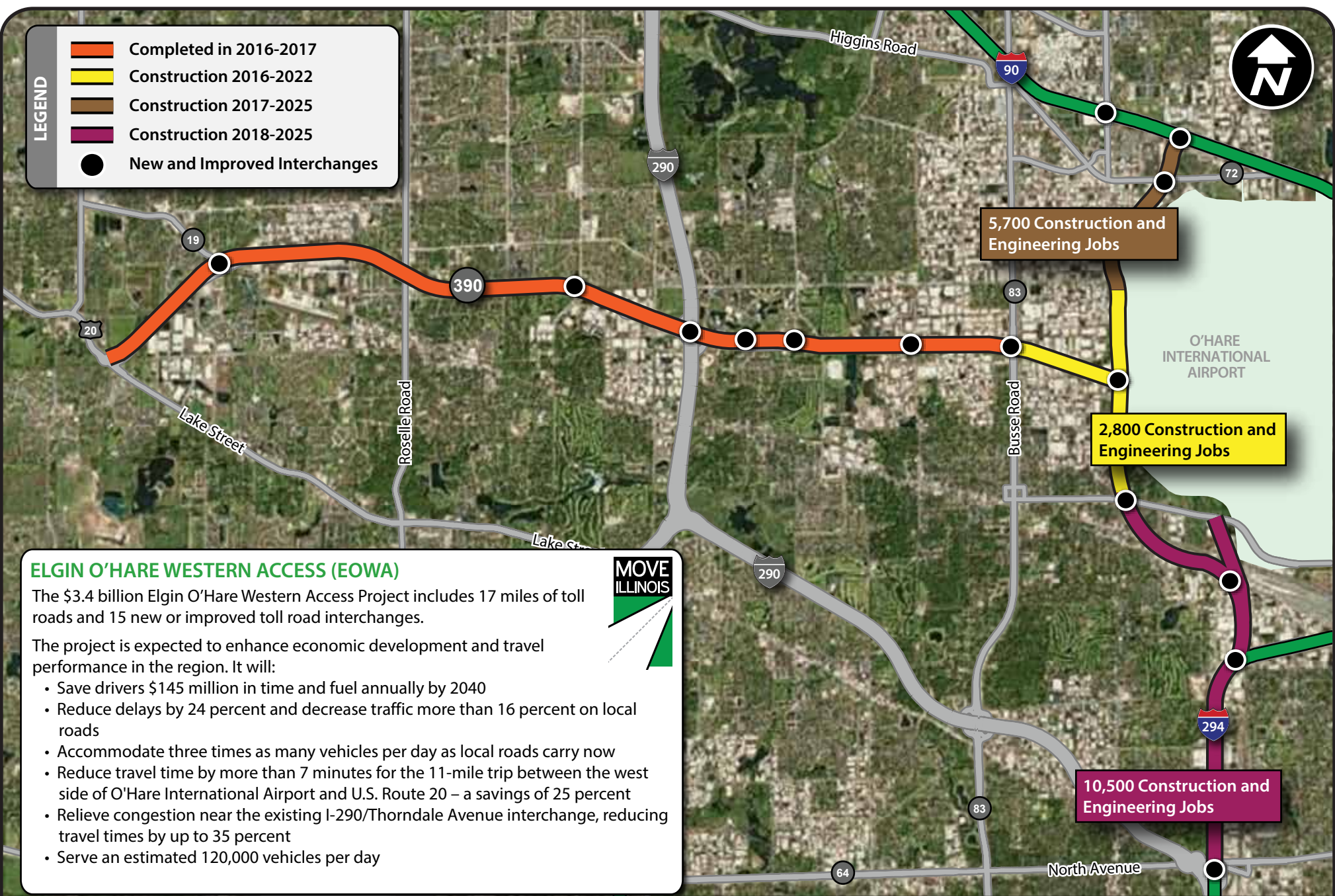


LEGEND

-  Completed in 2016-2017
-  Construction 2016-2022
-  Construction 2017-2025
-  Construction 2018-2025
-  New and Improved Interchanges



5,700 Construction and Engineering Jobs

2,800 Construction and Engineering Jobs

10,500 Construction and Engineering Jobs

ELGIN O'HARE WESTERN ACCESS (EOWA)

The \$3.4 billion Elgin O'Hare Western Access Project includes 17 miles of toll roads and 15 new or improved toll road interchanges.

The project is expected to enhance economic development and travel performance in the region. It will:

- Save drivers \$145 million in time and fuel annually by 2040
- Reduce delays by 24 percent and decrease traffic more than 16 percent on local roads
- Accommodate three times as many vehicles per day as local roads carry now
- Reduce travel time by more than 7 minutes for the 11-mile trip between the west side of O'Hare International Airport and U.S. Route 20 – a savings of 25 percent
- Relieve congestion near the existing I-290/Thorndale Avenue interchange, reducing travel times by up to 35 percent
- Serve an estimated 120,000 vehicles per day



ELGIN O'HARE WESTERN ACCESS PROJECT
A New, All-Electronic Toll Road



Updated: 10/30/17