



ELGIN O'HARE WESTERN ACCESS PROJECT

Illinois Route 390 Tollway and I-490 Tollway



I-490 TOLLWAY AND ILLINOIS ROUTE 390 TOLLWAY PROJECTS

The I-490 Tollway, coupled with the new Illinois Route 390 Tollway, will connect businesses and communities with one of the nation's busiest airports, transit facilities, major freight transportation hubs, distribution centers and multiple interstate highways including the Jane Addams Memorial Tollway (I-90) and the Central Tri-State Tollway (I-294).

Due to the overall magnitude and potential to dramatically improve mobility, freight connectivity and enhance the national and regional economies, the \$3.4 billion investment in the corridor is designated as a "Project of National and Regional Significance" by federal transportation legislation.

Designed to accommodate access into the O'Hare International Airport, the new cashless Tollways include 17 miles of new roads with 15 new or improved interchanges. The new Illinois Route 390 Tollway, completed in November 2017, carries east-west traffic and the new I-490 Tollway will be built to carry north-south traffic around the western border of O'Hare and provide access to the airport.

The projects are part of a regional transportation solution resulting from bipartisan consensus among local communities, business, labor, public finance and regional planning and transportation experts.

The projects include:

- Providing direct access to O'Hare International Airport property
- Constructing new roadways to provide access from I-294 to Franklin Avenue/Green Street
- Constructing a new partial interchange on I-294 at County Line Road/ North Avenue (Illinois Route 64)
- Constructing Touhy Avenue improvements

THE PROJECT WILL:

Create as many as
65,000 jobs
(direct and indirect) by 2040 when combined with completion of the western terminal at O'Hare

Save drivers \$145 million
in time and fuel annually by 2040

More than
16% less traffic
on local roads during rush hour

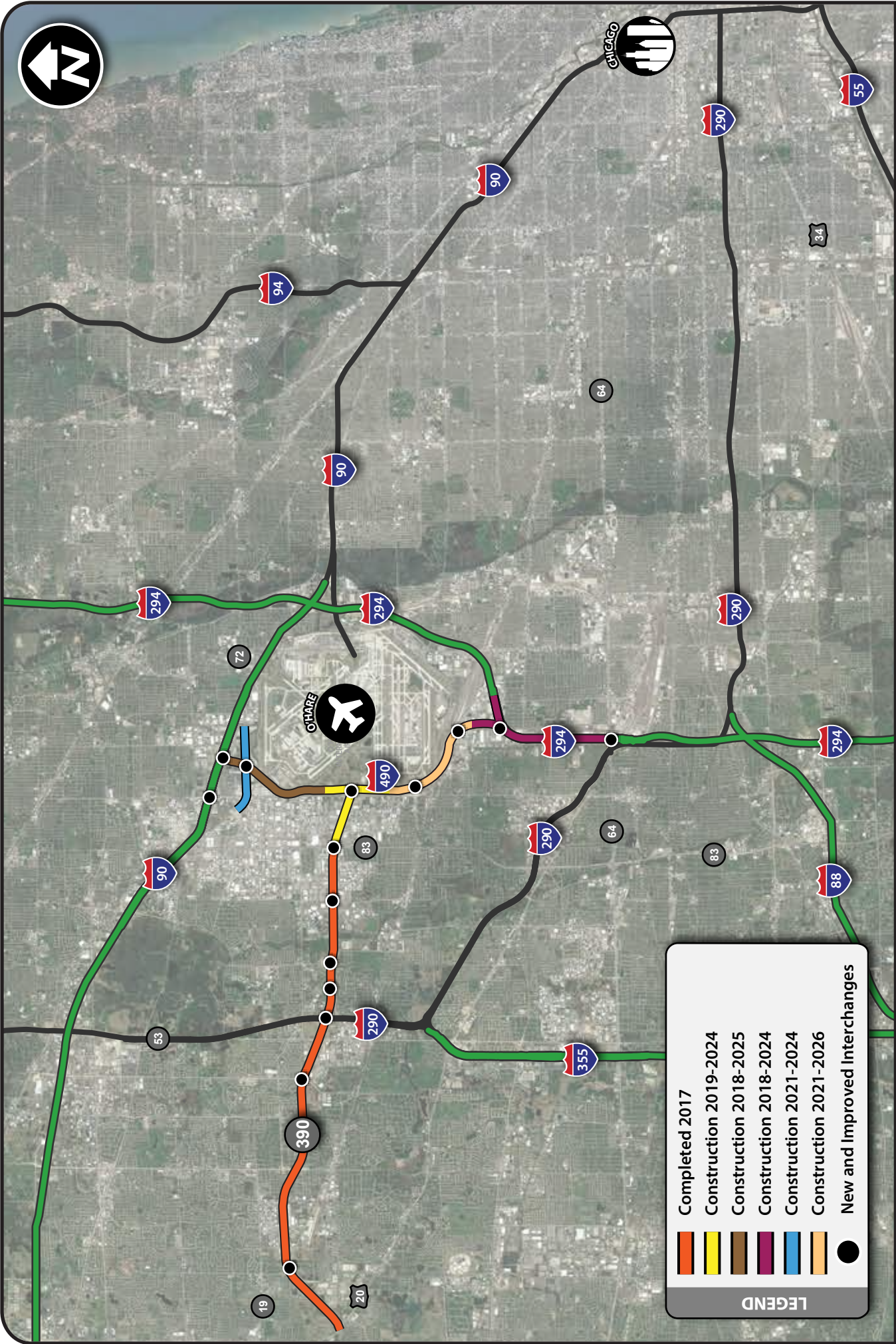
Reduced delays by 24%
on local roads

Accommodate
3x as many vehicles
per day as local roads carry now

More than
7 minutes less travel time
between west side of O'Hare and Lake Street (U.S. Route 20) –
a savings of 25%

Serve an estimated
120,000 vehicles
per day





LEGEND

- Completed 2017
- Construction 2019-2024
- Construction 2018-2025
- Construction 2018-2024
- Construction 2021-2024
- Construction 2021-2026
- New and Improved Interchanges



ELGIN O'HARE WESTERN ACCESS PROJECT

Illinois Route 390 Tollway and I-490 Tollway

MOVE ILLINOIS



Updated: 04/28/21