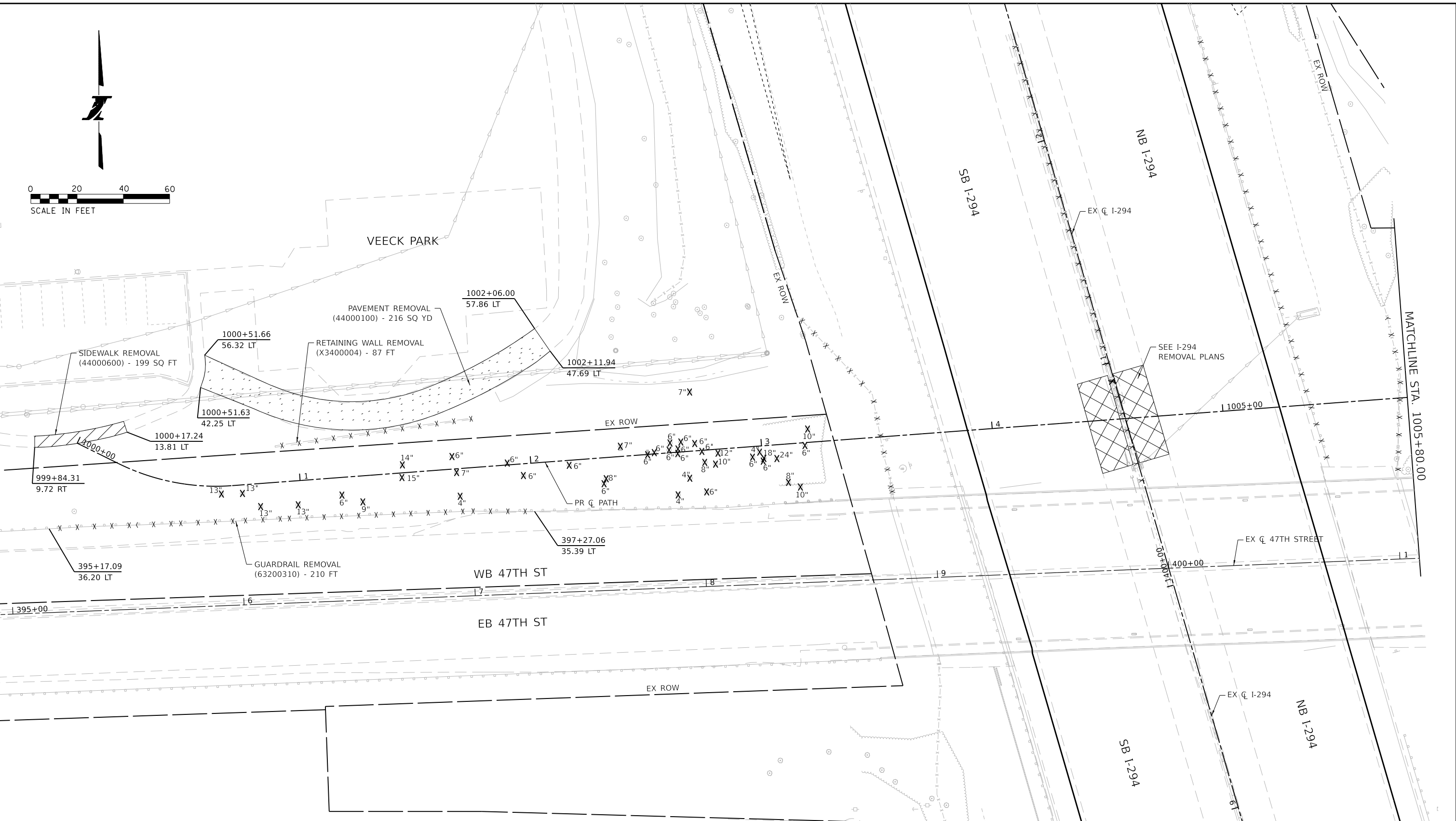


PLOT DATE = 3/22/2021 PLOT TIME = 11:42:27 PM PLOT SCALE = 48.0000 / 1" = 60' FILE NAME = 60515817-Central-Tri-State-Downers\18-4424-DJR\20 - T02 - Pedestrian Bridge Crossing Over I-294.01 - DGN\12 - SHT\VOLUME 1 - CIVIL\ROADWAY\4424-T02-SHT-REM-102-T02.dgn

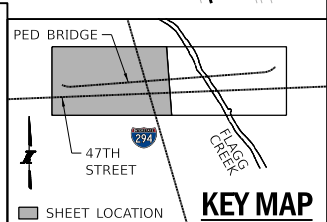


REMOVAL LEGEND

-x-x-x-x-x-	GUARDRAIL REMOVAL (63200310)
-x-x-x-x-x-	CONCRETE MEDIAN BARRIER AND BASE REMOVAL (J1440010)
-x-x-x-x-x-	RETAINING WALL REMOVAL (X3400004)
-x-x-x-x-x-	SHOULDER RUMBLE STRIP REMOVAL (J1440022)
-x-x-x-x-x-	RIGHT OF WAY FENCE REMOVAL (J1664400)

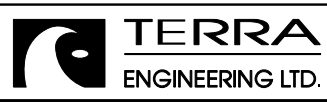
	SIDEWALK REMOVAL (44000600)
	PAVEMENT REMOVAL (44000100)
	PAVED SHOULDER REMOVAL (44004250)
X	TREE REMOVAL (WITH UNIT DIAMETER) (20100110 OR 20100210)
X L	REMOVAL OF EXISTING LIGHTING UNIT, NO SALVAGE (JS842085)
X L	POLE FOUNDATION, REMOVED (JS842105)

- NOTES**
- ALL STATIONS AND OFFSETS MEASURED FROM PR CL UNLESS OTHERWISE NOTED.
 - ALL DIMENSIONS ARE IN FEET UNLESS OTHERWISE SPECIFIED.
 - ALL DIMENSIONS ARE APPROXIMATE ONLY, AND TO BE VERIFIED ON SITE.
 - CONTRACTOR MAY ADJUST LIMITS OF GUARDRAIL REMOVAL AS NEEDED TO COMPLETE THE WORK, SUBJECT TO APPROVAL BY THE ENGINEER. TEMPORARY CONCRETE BARRIER SHALL REMAIN IN PLACE UNTIL THE GUARDRAIL HAS BEEN RESTORED.



DRAWN BY MH DATE 03/26/2021

CHECKED BY DL DATE 03/26/2021



THE ILLINOIS STATE TOLL HIGHWAY AUTHORITY

2700 OGDEN AVENUE
DOWNERS GROVE,
ILLINOIS 60515

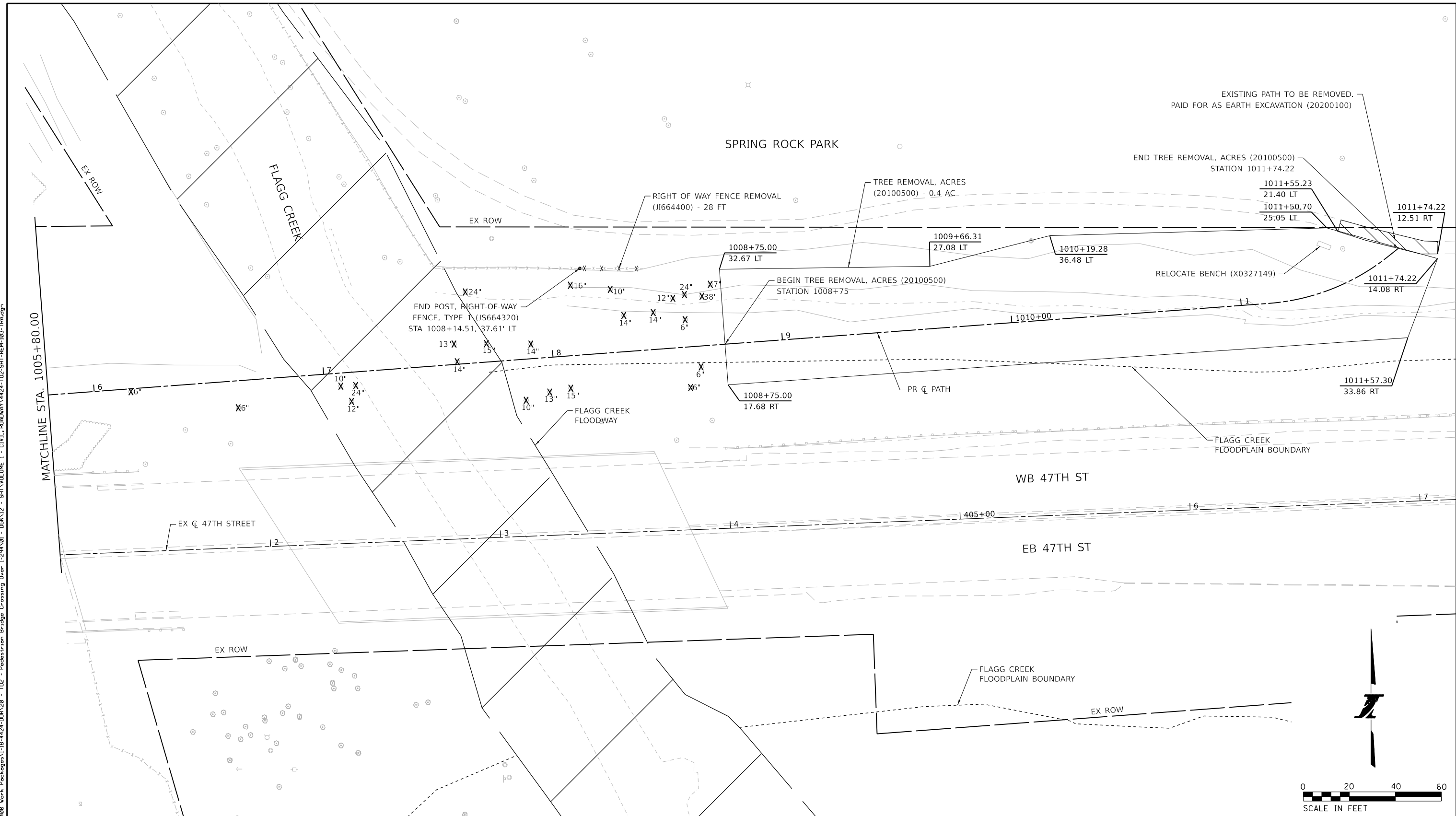
REVISIONS	
NO.	DESCRIPTION

CONTRACT NO. RR-20-4550

REMOVAL PLAN SHEET 1 OF 2

REM-102 DRAWING NO. 32 OF 195

PLOT DATE = 3/22/2021 PLOT TIME = 11:42:15 PM PLOT SCALE = 40,0000 / 1" FILE NAME = 69515817-Central-Tri-State-Downers-Village-4424-DJN-20 - T02 - Pedestrian Bridge Crossing Over I-294.01 - DGN12 - SHT-VOLUME 1 - CIVIL-ROADWAY\4424-T02-SHT-REM-103-TRA.dgn



EXISTING PATH TO BE REMOVED.
PAID FOR AS EARTH EXCAVATION (20200100)

SPRING ROCK PARK

END TREE REMOVAL, ACRES (20100500)
STATION 1011+74.22

1011+55.23
21.40 LT
1011+50.70
25.05 LT

1011+74.22
12.51 RT

RIGHT OF WAY FENCE REMOVAL
(J1664400) - 28 FT

TREE REMOVAL, ACRES
(20100500) - 0.4 AC

1009+66.31
27.08 LT

1010+19.28
36.48 LT

RELOCATE BENCH (X0327149)

1011+74.22
14.08 RT

BEGIN TREE REMOVAL, ACRES (20100500)
STATION 1008+75

END POST, RIGHT-OF-WAY
FENCE, TYPE 1 (J5664320)
STA 1008+14.51, 37.61' LT

1008+75.00
32.67 LT

1008+75.00
17.68 RT

1011+57.30
33.86 RT

MATCHLINE STA. 1005+80.00

WB 47TH ST

EB 47TH ST

EX C 47TH STREET

FLAGG CREEK
FLOODWAY

FLAGG CREEK
FLOODPLAIN BOUNDARY

FLAGG CREEK
FLOODPLAIN BOUNDARY

EX ROW



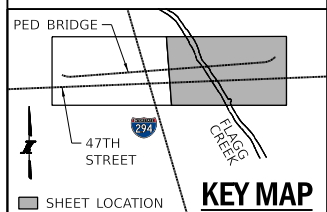
REMOVAL LEGEND

	GUARDRAIL REMOVAL (63200310)
	CONCRETE MEDIAN BARRIER AND BASE REMOVAL (J1440010)
	RETAINING WALL REMOVAL (X3400004)
	SHOULDER RUMBLE STRIP REMOVAL (J1440022)
	RIGHT OF WAY FENCE REMOVAL (J1664400)

	SIDEWALK REMOVAL (44000600)
	PAVEMENT REMOVAL (44000100)
	PAVED SHOULDER REMOVAL (44004250)
	TREE REMOVAL (WITH UNIT DIAMETER) (20100110 OR 20100210)
	REMOVAL OF EXISTING LIGHTING UNIT, NO SALVAGE (JS842085) POLE FOUNDATION, REMOVED (JS842105)

NOTES

- ALL STATIONS AND OFFSETS MEASURED FROM PR C PATH UNLESS OTHERWISE NOTED.
- ALL DIMENSIONS ARE IN FEET UNLESS OTHERWISE SPECIFIED.
- ALL DIMENSIONS ARE APPROXIMATE ONLY, AND TO BE VERIFIED ON SITE.
- CONTRACTOR MAY ADJUST LIMITS OF GUARDRAIL REMOVAL AS NEEDED TO COMPLETE THE WORK, SUBJECT TO APPROVAL BY THE ENGINEER. TEMPORARY CONCRETE BARRIER SHALL REMAIN IN PLACE UNTIL THE GUARDRAIL HAS BEEN RESTORED.



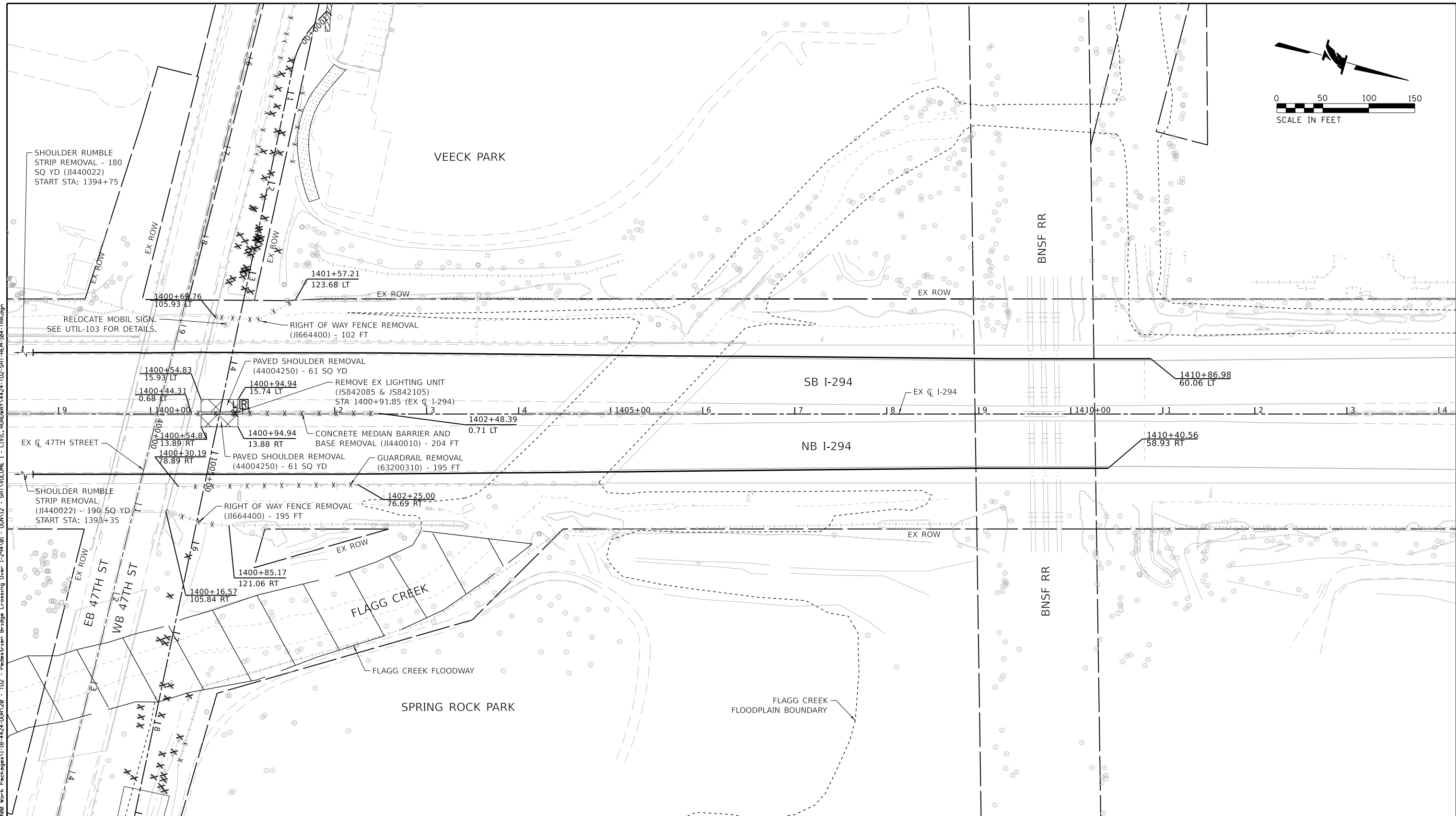
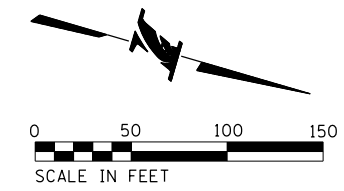
DRAWN BY MH DATE 03/26/2021
CHECKED BY DL DATE 03/26/2021



THE ILLINOIS STATE TOLL HIGHWAY AUTHORITY
2700 OGDEN AVENUE
DOWNERS GROVE,
ILLINOIS 60515

REVISIONS	
NO.	DATE

CONTRACT NO. RR-20-4550
REMOVAL PLAN
SHEET 2 OF 2
REM-103
DRAWING NO.
33 OF 195



SHOULDER RUMBLE STRIP REMOVAL - 180 SQ YD (JI440022) START STA: 1394+75

VEECK PARK

BNSF RR

SB I-294

NB I-294

FLAGG CREEK

SPRING ROCK PARK

FLAGG CREEK FLOODPLAIN BOUNDARY

RELOCATE MOBIL SIGN. SEE UTIL-103 FOR DETAILS.

RIGHT OF WAY FENCE REMOVAL (JI664400) - 102 FT

PAVED SHOULDER REMOVAL (44004250) - 61 SQ YD

REMOVE EX LIGHTING UNIT (JS842085 & JS842105) STA 1400+91.85 (EX C I-294)

CONCRETE MEDIAN BARRIER AND BASE REMOVAL (JI440010) - 204 FT

PAVED SHOULDER REMOVAL (44004250) - 61 SQ YD

GUARDRAIL REMOVAL (63200310) - 195 FT

SHOULDER RUMBLE STRIP REMOVAL (JI440022) - 190 SQ YD START STA: 1398+35

RIGHT OF WAY FENCE REMOVAL (JI664400) - 195 FT

1402+25.00 76.69 RT

1400+85.17 121.06 RT

1400+16.57 105.84 RT

EB 47TH ST

WB 47TH ST

1400+54.83 15.93 LT

1400+44.31 0.68 LT

1400+54.83 13.89 RT

1400+30.19 78.89 RT

1400+94.94 15.74 LT

1400+94.94 13.88 RT

1402+48.39 0.71 LT

1410+86.98 60.06 LT

1410+40.56 58.93 RT

REMOVAL LEGEND

- GUARDRAIL REMOVAL (63200310)
- CONCRETE MEDIAN BARRIER AND BASE REMOVAL (JI440010)
- RETAINING WALL REMOVAL (X3400004)
- SHOULDER RUMBLE STRIP REMOVAL (JI440022)
- RIGHT OF WAY FENCE REMOVAL (JI664400)

- SIDEWALK REMOVAL (44000600)
- PAVEMENT REMOVAL (44000100)
- PAVED SHOULDER REMOVAL (44004250)
- TREE REMOVAL (WITH UNIT DIAMETER) (20100110 OR 20100210)
- REMOVAL OF EXISTING LIGHTING UNIT, NO SALVAGE (JS842085) POLE FOUNDATION, REMOVED (JS842105)

NOTES

1. ALL STATIONS AND OFFSETS MEASURED FROM PR C PATH UNLESS OTHERWISE NOTED.
2. ALL DIMENSIONS ARE IN FEET UNLESS OTHERWISE SPECIFIED.
3. ALL DIMENSIONS ARE APPROXIMATE ONLY, AND TO BE VERIFIED ON SITE.
4. CONTRACTOR MAY ADJUST LIMITS OF GUARDRAIL REMOVAL AS NEEDED TO COMPLETE THE WORK, SUBJECT TO APPROVAL BY THE ENGINEER. TEMPORARY CONCRETE BARRIER SHALL REMAIN IN PLACE UNTIL THE GUARDRAIL HAS BEEN RESTORED.

PLOT DATE = 3/22/2021 PLOT TIME = 11:45:12 PM PLOT SCALE = 100.0000 / 1" FILE NAME = 60515817-Centrol-Tr-States-Downers-Grove-Village-18-424-DJN-20 - 102 - Pedestrian Bridge Crossing Over I-294.01 - DGN12 - SHT.VOLUME 1 - CIVIL.ROADWAY\4424-102-SHT-REM-104-TRA.dgn

DRAWN BY MH DATE 03/26/2021
 CHECKED BY DL DATE 03/26/2021



THE ILLINOIS STATE TOLL HIGHWAY AUTHORITY
 2700 OGDEN AVENUE
 DOWNERS GROVE,
 ILLINOIS 60515

REVISIONS	
NO.	DESCRIPTION

CONTRACT NO. RR-20-4550
 REMOVAL PLAN I-294
 REM-104 DRAWING NO. 34 OF 195