



Illinois Tollway
DIVERSITY

Driving Economic Opportunities

BUILDING FOR SUCCESS

Illinois Tollway Insurance and
Risk Management

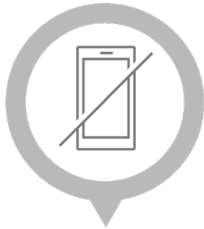
September 12, 2022



HOUSEKEEPING RULES



Housekeeping Rules





Construction Contract Insurance Requirements

September 12, 2022

Mark Thomas, ARM, CRIS



Objective

To present an overview of the Tollway's insurance requirements

Agenda

Source documents, supporting documents and guidelines

Overview of Illinois Tollway Supplemental Specifications article 107.27

Overview of Volume II Special Provisions, article S.P. 107

Questions



Disclaimers

Information provided is for general information.

Subject to change without prior notice.

Not intended to constitute advice.

Views and opinions expressed are those of the presenters.

See Tollway contract documents for complete construction contract insurance requirements.



Source Documents

Illinois Tollway Supplemental Specifications to the Illinois Department of Transportation Standard Specifications for Road and Bridge Construction, article 107.27

Volume II Special Provisions, article S.P. 107

Supporting Documents:

- OCIP Insurance Manual
- ROCIP Insurance Manual


Guidelines:

- Contractor Insurance Documentation Guidelines for Construction Contracts



Bids Bulletins Awards - Illinois Tollway

https://www.illinoistollway.com/doing-business/construction-engineering/bids-bulletins-awards#Specifications%20and%20Special%20Provisions

MENU  I-PASS PAY-BY-PLATE

Page 1 of 40 — 5 Items per Page Showing 1 - 5 of 196 results: First Previous Next Last

Specifications And Special Provisions

CURRENT CONSTRUCTION SPECIFICATIONS

[Tollway Supplemental Specifications to IDOT Standard Specifications \(Issued February 1, 2022\) \(pdf\)](#)

Previous Specifications

Illinois Tollway Supplemental Specifications to IDOT Standard Specifications (Issued March 2021)	>
Tollway Supplemental Specifications to IDOT Standard Specifications (Issued April 5, 2019) (pdf)	>
Tollway Supplemental Specifications to IDOT Standard Specifications (Issued March 2018) (pdf)	>
Tollway Supplemental Specifications to IDOT Standard Specifications (Issued March 2020) (pdf)	>
Tollway Supplemental Specifications to IDOT Standard Specifications (Issued May 1, 2017) (pdf)	>
Tollway Supplemental Specifications to IDOT Standard Specifications (Issued March 2015) (pdf)	>
Tollway Supplemental Specifications to IDOT Standard Specifications (Issued March 2014) (pdf)	>
Tollway Supplemental Specifications February 7, 2012.pdf	>
Tollway Supplemental Specifications to the IDOT Standard Specifications (Issued June 1, 2011) - PDF	>
Tollway Supplemental Specifications to the IDOT Standard Specifications Adopted January 1, 2007 (Issued June 1, 2008) - PDF	>


Page 1 of 2 — 10 Items per Page Showing 1 - 10 of 14 results: First Previous Next Last

PRICE INDEX

[Find current bituminous, fuel and steel price indices \(IDOT\)](#)

Professional Services Bulletin

76°F Sunny 11:21 AM



Supplemental Specifications article 107.27

107.27(a) General Provisions

107.27(b) Deductibles and Self-Insured Retentions

107.27(c) Policy Requirements

107.27(d) Subcontractors

107.27(e) Scope of Insurance

107.27(f) Limits of Liability

107.27(g) Certification of Coverage by Contractor Broker or Agent

107.27(h) Cost of Insurance

107.27(1) Waiver of Subrogation

107.27(j) Additional Insured Protection



Supplemental Specifications article 107.27

107.27(a) General Provisions

107.27(b) Deductibles and Self-Insured Retentions

107.27(c) Policy Requirements



107.27(d) Subcontractors

Required types of subcontractor coverages

- Commercial general liability
- Business automobile liability
- Workers' compensation and employer's liability
- Excess/umbrella liability

To be determined by the Contractor:

- Limits of coverage for the required types of coverage (above)
- Whether the subcontractor must provide contractor's pollution liability insurance

Subcontractor evidence of insurance coverage to be maintained by the Contractor

107.27(e) and (f) types and limits of coverage

Source: Illinois Tollway Supplemental Specifications article 107.27(e) and (f)

Type of Coverage	Required minimum limits	Extended coverage requirements
Commercial general liability	\$1,000,000 per occurrence \$2,000,000 general aggregate \$2,000,000 products/completed operations aggregate	Products completed operations coverage: minimum of two (2) years following acceptance of Work
Automobile liability	\$1,000,000 combined single limit	
Workers compensation and employers' liability	WC: statutory benefits EL: \$1,000,000 each accident \$1,000,000 disease each employee \$1,000,000 disease policy limit	
Excess/umbrella liability	\$25,000,000 each occurrence \$25,000,000 aggregate per project	
Builder's risk	Original contract award amount	
Contractor's pollution liability	\$2,000,000 each pollution condition \$2,000,000 general aggregate	Completed operations coverage: minimum of two (2) years following acceptance of Work
Professional liability	\$5,000,000 per claim \$5,000,000 general aggregate	Five (5) years after completion of the Contract

107.27(g) Certification of Coverage

107.27(g) Certification of Coverage by Contractor Broker or Agent

The Agent/Broker for the Contractor must provide a certification letter on its letterhead attesting that:

- (1) All provisions of the accepted certificates of insurance and policy binders have been obtained and
- (2) All endorsements indicated have been secured from the insurance carrier.

This letter must clarify if the agency is a binding agent or a broker for the insurance carrier. Each certification letter must be signed by an officer of the brokerage or by a principal of the agency.



Supplemental Specifications article 107.27

107.27(h) Cost of Insurance

107.27(1) Waiver of Subrogation

107.27(j) Additional Insured Protection



“Additional Insured” Requirements

Commercial general liability

Automobile liability

Contractor’s pollution liability

Builder’s risk – named insured

- Installation floater – loss payee

“Additional Insured” Requirements

Required additional insureds:

- The Illinois Tollway
- Consulting Engineer, Program Management Office, Project Manager, Design Section Engineer, Design Corridor Manager, Construction Manager and Construction Corridor Manager
- Contracting or agreement entities

Primary and not contributing



Contract Book Volume II Special Provisions

S.P. 107 Insurance

Includes changes or additions to the insurance requirements of 107.27

Additional Insurance Coverages

S.P. 107.1: Engineering Professional Liability

S.P. 107.2: Environmental Protection

S.P. 107.3: Railroad Protective Liability



Summary

Illinois Tollway construction contract insurance requirements

The Illinois Tollway Supplemental Specifications article 107.27

Contract book Volume II Special Provisions, S.P. 107





QUESTIONS AND ANSWERS

DIVERSITY AND STRATEGIC DEVELOPMENT

Programs

- ConstructionWorks
- Diversity Webinar Series
- Earned Credit Program
- Partnering for Growth Program
- ROCIP
- Small Business Initiative
- Technical Assistance Program

Initiatives

- Virtual outreach sessions
- Training webinars
- Contracting opportunity emails

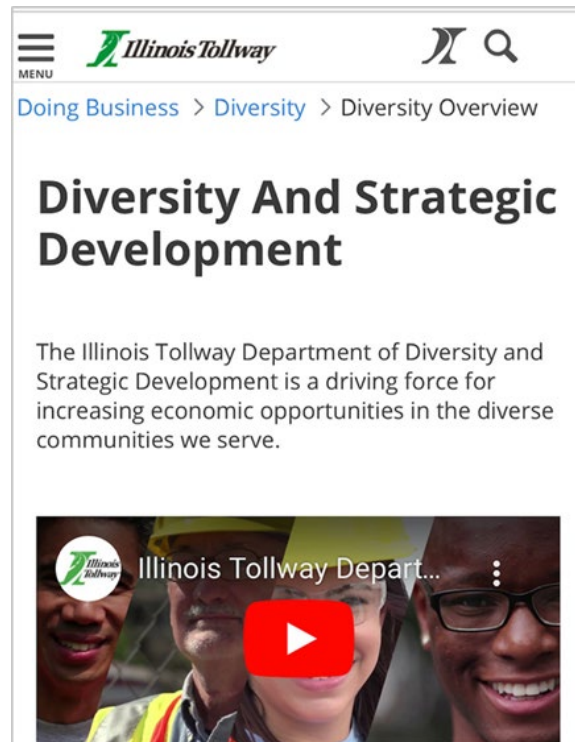
Register for Tollway Diversity alerts!

- lpnce@getipass.com

Visit illinoistollway.com to get started



BUILDING FOR SUCCESS





THANK YOU