



Move Illinois Quarterly

June 2022



MOVE ILLINOIS STATUS | 2012 - MAY 2022

11th year of 15-year, \$14 billion capital program



66%
COMPLETE

\$10.9 BILLION
COMMITTED

109,930
JOBS

747 CONTRACTS
AWARDED

CENTRAL TRI-STATE TOLLWAY PROJECT HIGHLIGHTS



Mainline Reconstruction



I-290/I-88 Interchange Project at I-294



BNSF Railway Bridge Project



Mile Long Bridge Project

I-490 TOLLWAY PROJECT HIGHLIGHTS



I-490/IL 390 Interchange

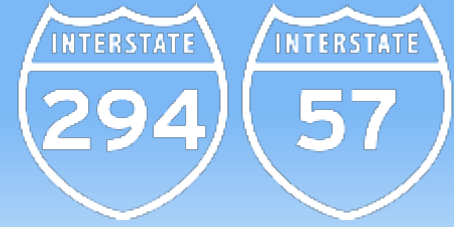


I-490/I-90 Interchange



I-490/I-294 Interchange

I-294/I-57 INTERCHANGE PROJECT HIGHLIGHTS



An aerial photograph of a highway construction site. The image shows a multi-lane highway with a construction area on the left side. A white text box is overlaid on the center of the image, containing the text "Move Illinois Program Progress". The background shows a highway with several cars and a large white truck. The construction area includes a large concrete slab, some rebar, and a yellow excavator. The sky is clear and blue.

Move Illinois Program Progress

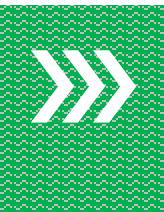
YEAR-TO-DATE PROGRAM PROGRESS | January - June 2022



AWARDED **47** CONSTRUCTION
AND PROFESSIONAL SERVICES
CONTRACTS

AWARDED **38**
CONTRACTS LESS THAN \$10
MILLION

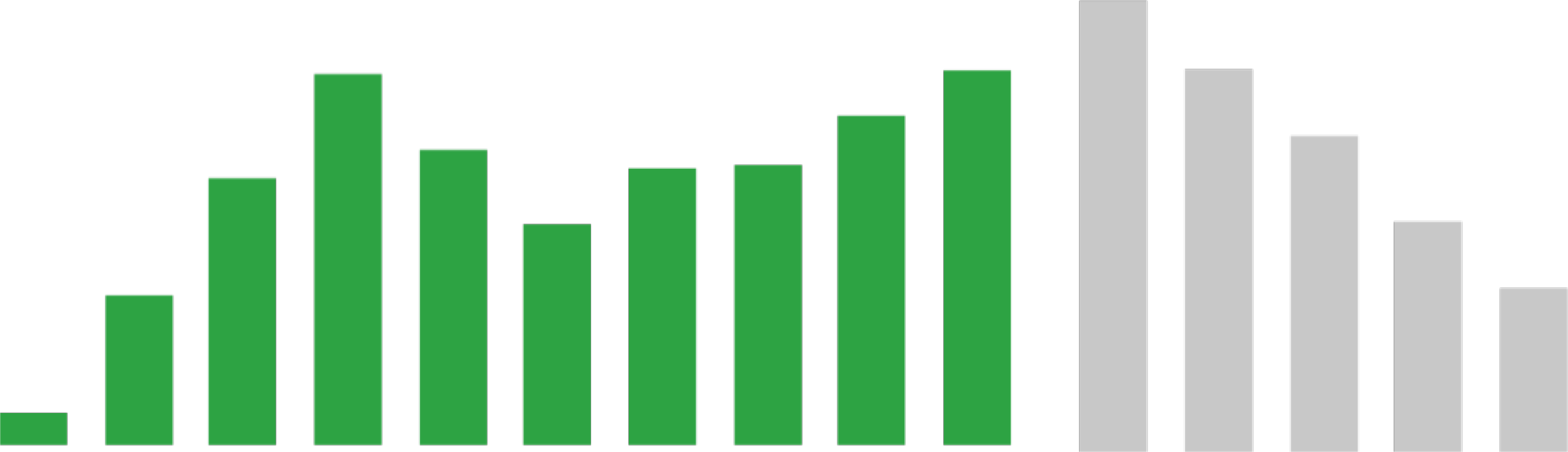
CLOSED OUT **44** CONSTRUCTION
AND PROFESSIONAL SERVICES
CONTRACTS



Upon Request contracts are intended to introduce new and small firms to the Tollway and provide opportunities to help them grow

MOVE ILLINOIS PROGRAM SPEND BY YEAR

Projected (2022-2026)



SPENT (in millions)

FORECASTED SPEND (in millions)

Year	2012	2013	2014	2015	2016	2017	2018	2019	2020	2021	2022	2023	2024	2025	2026
Total	\$107.7	\$499.3	\$888.6	\$1,237.7	\$985.4	\$735.6	\$921.8	\$935.8	\$1,097.4	\$1,259.1	\$1,486.4	\$1,261.4	\$1,040.5	\$756.6	\$537.8

Financial data presented is preliminary, audited and subject to change



Engineering Updates

UPCOMING CONSTRUCTION | Advertisements/Opening



Central Tri-State Tollway (I-294)

- I-294 roadway widening and reconstruction – Central Section
- Fiber installation – I-55 ramps to Cermak Road
- Southbound Mile Long Bridge demolition
- ITS and fiber fabrication and storage – St. Charles Road to Wolf Road



I-490 Tollway

- I-490 earthwork and drainage improvements at Taft Avenue
- Touhy Avenue roadway and drainage improvements
- Thomas Drive reconstruction

Approximately **40 small business and unbundling opportunities** in 2022

COMBINATION BID | How It Works

Example:

- Find lowest bid combination (contract 1 and contract 2)
 - \$46 million + \$49 million = \$95 million
- Lowest bid is \$94 million

Combination bid opportunity scheduled to open late July

Bidder	Contract 1 (millions)	Contract 2 (millions)	Combo Bid (millions)
Bidder A	\$50	\$50	\$98
Bidder B	\$46	--	n/a
Bidder C	\$52	\$53	\$94
Bidder D	\$47	\$49	--

2022 PROFESSIONAL SERVICES OPPORTUNITIES

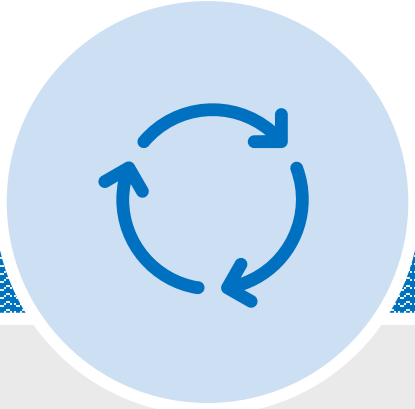
PSB 22-3 SCHEDULED
TO BE PUBLISHED
SUMMER 2022

Worth an
estimated \$27 million

ENGINEERING INITIATIVES



**DESIGN-BUILD
LEGISLATION**



**NEW E-BUILDER
PROCESSES**



SAFETY

A construction worker wearing a hard hat, safety glasses, and a high-visibility vest is working on a construction site. The worker is holding a long wooden beam. The background shows a large area filled with stacks of wooden beams and other construction materials. The scene is set outdoors during the day.

Diversity Initiatives

DIVERSITY PROGRAM OVERVIEW



ConstructionWorks

Creates a qualified pipeline of diverse men and women ready to enter careers in the heavy highway and related construction industry



EARNED CREDIT PROGRAM

Provides opportunities for historically underrepresented segments of the heavy highway construction workforce



PARTNERING for GROWTH

Encourages prime consultants and contractors to assist D/M/WBE firms and veteran-owned small businesses



TECHNICAL ASSISTANCE

Prepares emerging and established transportation-related construction firms to participate on highway and vertical construction contracts



SMALL BUSINESS INITIATIVE

Intended to increase opportunities for small construction companies to participate on Tollway construction contracts



Upon Request contracts are intended to introduce new and small firms to the Tollway and provide opportunities to help them grow

PARTNERING FOR GROWTH

Construction Program

Two upcoming bid packages for Automated Machine Guidance (AMG)

- Provides digital awareness for small and diverse contractors
- Teaches contractors model-based construction software
- Pilot project, mentor protégé program or cohort workshop training program options



Emerging Technology Agreements

Experienced firms provide short-term trainings on latest equipment and technology

Visit the [Partnering For Growth](https://illinoistollway.com) page at illinoistollway.com to learn how to become a mentor or protégé

CONSTRUCTIONWORKS | Workforce Development



Services currently available



Program renewed for one year

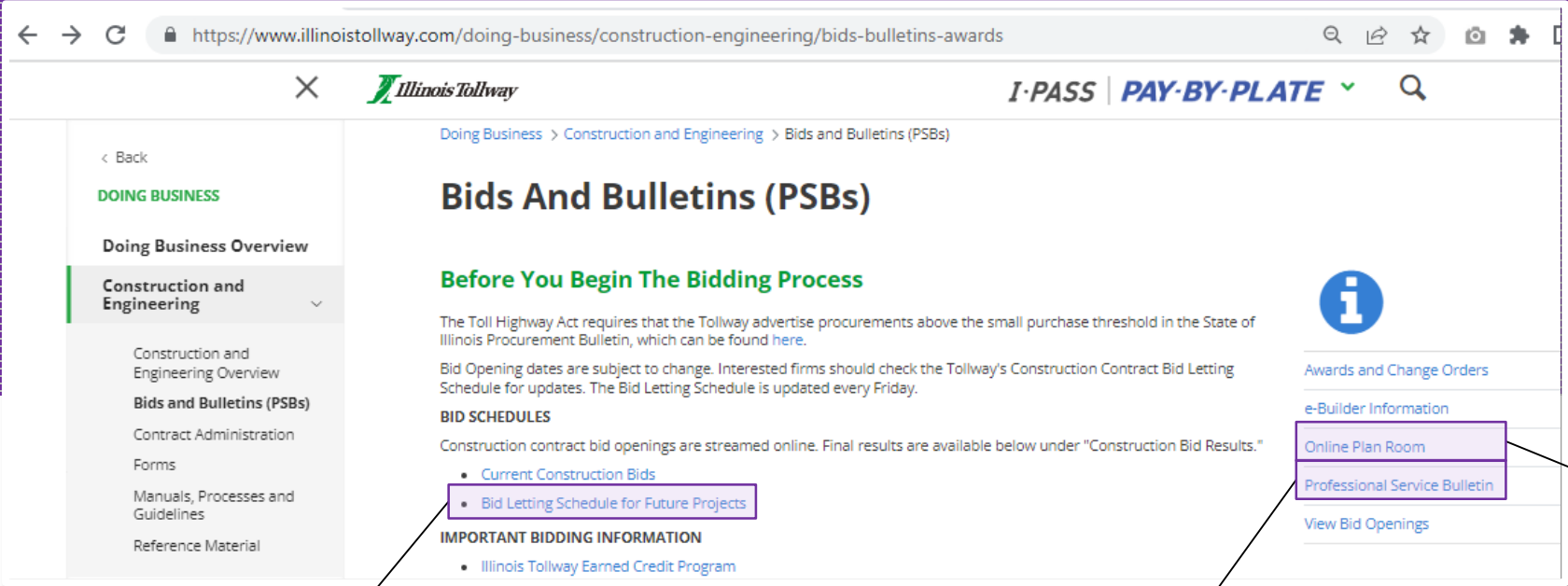


Future program enhancements




HOW TO DO BUSINESS WITH THE TOLLWAY


[illinoistollway.com/doing-business/construction-engineering](https://www.illinoistollway.com/doing-business/construction-engineering)



Visit the **Diversity Webinar Series** page at [illinoistollway.com](https://www.illinoistollway.com) to **view previous training sessions**

Online Plan Room
illinoistollwaybidding.com

Construction Bid Letting Schedule 

Professional Services Bulletin (PSB) 

Procurement

An aerial photograph of a multi-level highway interchange. The image is darkened, and a white rectangular box is superimposed in the center, containing the word 'Procurement' in white, bold, sans-serif font. In the foreground, a FedEx truck is visible on one of the highway lanes. Other trucks and cars are scattered across the various levels of the interchange. The background shows a flat landscape with some trees and distant buildings under a clear sky.

PROCUREMENT INITIATIVES



**MAXIMIZING
EFFICIENCIES**



**CONTINUOUS
IMPROVEMENT**



**COLLABORATION
AND PARTNERSHIP**

DEBRIEFINGS

Professional Services

WHO: Representatives from Procurement, Engineering, Diversity and Contract Compliance attend



WHAT: Information is shared including rankings and evaluation



WHERE: Virtual setting



WHEN: Held after contract is awarded in BidBuy



An aerial photograph of a complex highway interchange with multiple lanes and ramps. The scene is partially obscured by a semi-transparent dark grey overlay. On the far left, there is a vertical green bar with a faint, textured pattern. The text 'Q&A' is centered in the upper half of the image.

Q&A

THANK YOU