



ILLINOIS TOLLWAY NEWS

FOR IMMEDIATE RELEASE
April 3, 2023

NORTHWEST AVENUE DETOURED AS PART OF UTILITY WORK, NORTH AVENUE INTERCHANGE RECONSTRUCTION

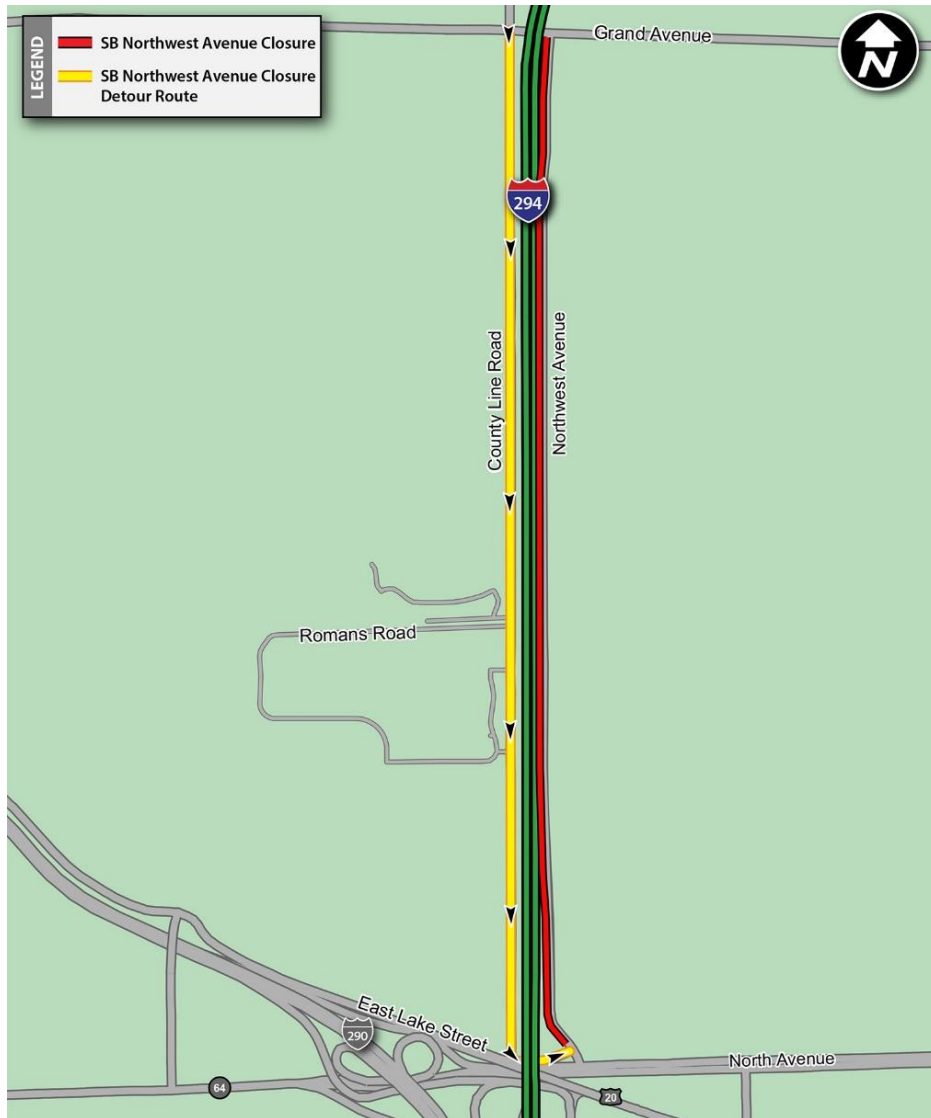
Southbound Northwest Avenue to close for ComEd utility work and Cook County work supporting Illinois Tollway projects

DOWNERS GROVE, IL – Beginning Tuesday, April 4, southbound Northwest Avenue will be detoured through late summer for utility work and ongoing Cook County reconstruction of the North Avenue Interchange in Elmhurst and Northlake. A detour will be posted.

The detour is needed for ComEd utility work, as well as local road and bridge construction by the Cook County Department of Transportation and Highways to accommodate the Illinois Tollway's North Avenue Interchange Project on the Central Tri-State Tollway (I-294).

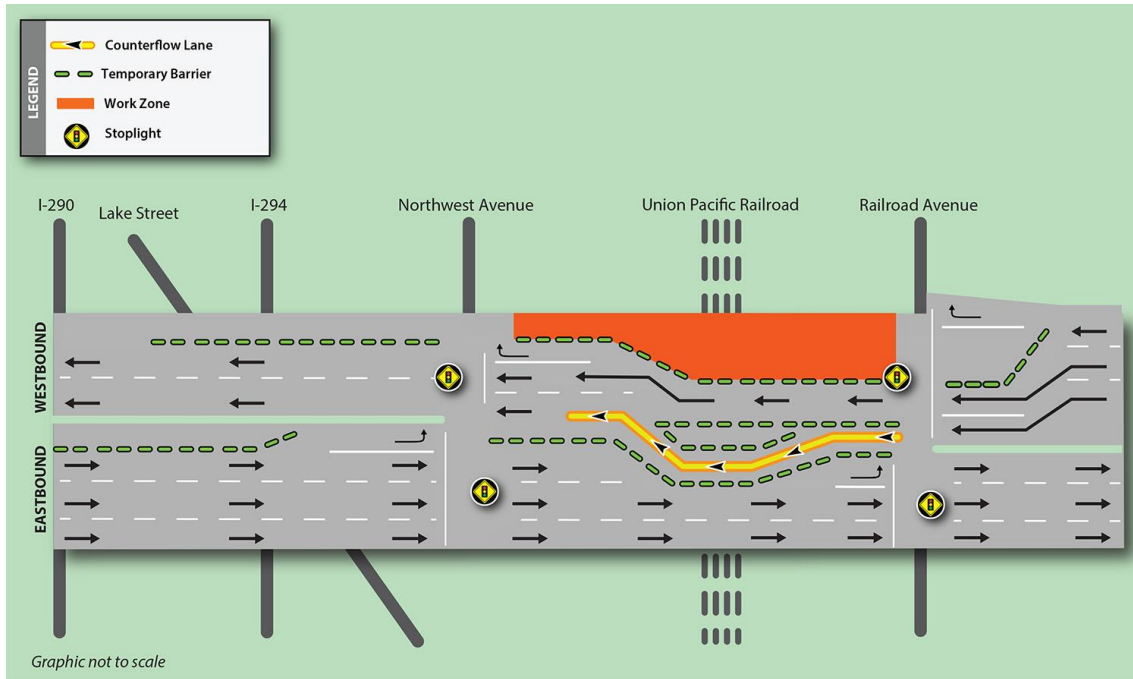
Detours and traffic shifts are necessary to provide a safe work zone for construction and accommodate traffic during construction. Electronic message signs and construction signage will be put in place to alert drivers in advance of the closure and detour. Up-to-date information regarding lane closures will be available in the Illinois Tollway's [Daily Construction Alert](#). All work is weather dependent.

Beginning Tuesday, April 4, Northwest Avenue will be closed to southbound traffic between East Lake Street and Grand Avenue through summer of 2023. Traffic will be detoured to southbound County Line Road and East Lake Street to reach Northwest Avenue. Northbound traffic will continue to have access to Northwest Avenue during this period.



In addition, beginning the week of April 24, North Avenue (Illinois Route 64) between Railroad Avenue and Northwest Avenue is scheduled to be reduced to two lanes in each direction for pavement work to prepare for a traffic shift.

Once that work is complete in late May, westbound traffic on North Avenue between Railroad Avenue and I-290 is scheduled to shift to the inside with traffic remaining reduced to two lanes in each direction and one lane of westbound traffic traveling on the eastbound side of North Avenue in a counterflow configuration. When this work is complete this summer, traffic will shift again, this time with eastbound North Avenue shifted to the inside and one lane of traffic traveling on the westbound side of North Avenue in a counterflow configuration. The work is scheduled to be completed in late summer.



Construction in this area is being coordinated with ComEd, Cook County Department of Transportation and Highways, the Illinois Department of Transportation, the City of Elmhurst and City of Northlake, as well as local fire and police departments.

Construction updates, project information, maps and detour information for work that is part of the North Avenue Interchange Project at I-294 are available in the Projects section on the Tollway's website at www.illinoistollway.com, as well as on the Cook County construction project webpage at maps.cookcountyil.gov/hwyproject.

Ongoing lane closures and traffic shifts are scheduled to continue over the next two years on these local roadways to allow Cook County to complete the roadway improvements which includes pavement reconstruction, bridge work, watermain reconstruction, drainage installation, and traffic signal modifications.

The project will include work to realign a portion of County Line Road to accommodate the reconstruction and widening of the Central Tri-State Tollway (I-294) and for the North Avenue Interchange Project that includes construction of a new ramp connecting southbound I-294 to County Line Road to provide new access to North Avenue and Lake Street to help reduce congestion at the interchange and on local roads.

In addition, the North Avenue and Lake Street (U.S. Route 20) intersection will be reconfigured to improve traffic flow and provide new direct access to eastbound North Avenue. Drainage improvements are planned to help alleviate flooding in the area during periods of heavy rainfall. Construction of detention ponds to hold stormwater and the installation of new storm sewers will help address flooding along North Avenue.

In partnership with the Illinois Tollway and cities of Northlake and Elmhurst, Cook County is leading the project's design and will be constructing the project improvements. This work is in coordination with the Illinois Tollway's 15 year, \$14 billion capital program, *Move Illinois: The Illinois Tollway Driving the Future*.

Work Zone Safety

Construction zone speed limits are in effect in all construction zones 24/7 and drivers should continue to watch for changing traffic patterns and use caution, especially when workers are present.

The Illinois Tollway reminds motorists that the “Move Over Law” requires motorists to change lanes or to slow down and proceed with caution when passing any vehicle on the side of the road with hazard lights activated. If you see flashing lights ahead, please move over or slow down.

Illinois State Police have zero tolerance for drivers speeding in work zones or failure to comply with the Move Over Law. The minimum penalty for speeding in a work zone is \$250 with up to a \$25,000 fine and a 14-year jail sentence for hitting a roadway worker. Penalties for failure to slow down or move over for a vehicle on the shoulder with flashing lights includes up to a \$10,000 fine, 2-year suspension of driving privileges and jail time, in extreme cases.

About Move Illinois

The Illinois Tollway’s 15-year, \$14 billion capital program, *Move Illinois: The Illinois Tollway Driving the Future*, is improving mobility, relieving congestion, reducing pollution, creating as many as 152,000 jobs and linking economies throughout the region. The first 11 years of *Move Illinois* are on schedule and within budget, delivering the rebuilt and widened Jane Addams Memorial Tollway (I-90) as a state-of-the-art 21st century corridor and opening a new interchange connecting the Tri-State Tollway (I-294) to I-57. Progress continues on projects addressing the remaining needs of the existing Tollway system, delivering the Elgin O’Hare Western Access Project and reconstruction of the Central Tri-State Tollway (I-294).

About the Illinois Tollway

The Illinois Tollway is a user-fee system that receives no state or federal funds for maintenance and operations. The agency maintains and operates 294 miles of roadways in 12 counties in Northern Illinois, including the Reagan Memorial Tollway (I-88), the Veterans Memorial Tollway (I-355), the Jane Addams Memorial Tollway (I-90), the Tri-State Tollway (I-94/I-294/I-80) and the Illinois Route 390 Tollway.

###