



ILLINOIS TOLLWAY NEWS

FOR IMMEDIATE RELEASE
July 26, 2023

LANE REDUCTION SCHEDULED ON RAMP FROM EASTBOUND REAGAN MEMORIAL TOLLWAY (I-88) TO NORTHBOUND TRI-STATE TOLLWAY (I-294) AND WESTBOUND I-290

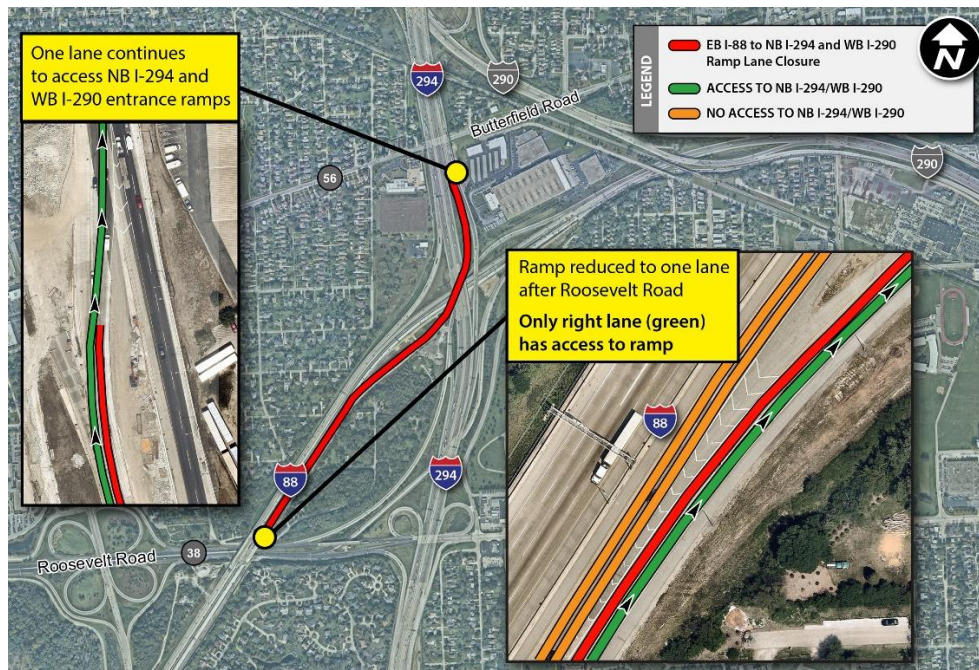
*Traffic will be limited to a single lane through fall
as part of the I-290/I-88 Interchange Project at I-294; delays are expected*

DOWNERS GROVE, IL – Beginning next week, the ramp connecting the eastbound Reagan Memorial Tollway (I-88) to the northbound Tri-State Tollway (I-294) and to westbound I-290 will be reduced from two lanes to a single lane through fall as work continues to reconstruct the I-290/I-88 Interchange at the Tri-State Tollway (I-294).

Traffic in this area is already impacted by multiple long-term ramp closures and ongoing overnight ramp closures and detours, and additional travel delays are expected.

Construction and electronic message signs will be in place in advance to alert drivers to the ramp lane closure. Up-to-date closure information will be available on the Illinois Tollway's [Daily Construction Alert](#). All work is weather dependent.

Beginning the week of July 31, the ramp connecting eastbound I-88 to both northbound I-294 and westbound I-290 will be reduced to a single lane. The lane reduction will begin on eastbound I-88 near Roosevelt Road where the ramp starts. Only traffic in the far right lane on I-88 will have access to the ramp, and no access will be available to traffic in the two left lanes on I-88. Ramp traffic will remain reduced to a single lane through the fall, with traffic shifted first to inside lane, followed by a shift to the outside lane.



Drivers should plan additional time for travel and be prepared for delays due to high travel demand and ongoing construction in the area.

While the ramp lane reduction is in place, eastbound I-88 drivers traveling to the York Road Interchange in Oak Brook are encouraged to exit earlier at the Midwest Road Interchange.

In addition, a long-term closure and detour of the ramp connecting westbound I-290 to northbound I-294 is in place and a traffic shift on northbound I-294 is in place impacting traffic entering from eastbound I-88. There are also several ramp closures at the nearby I-294/I-290/Roosevelt Road Interchange. In addition, ongoing nightly ramp closures and detours are scheduled throughout the I-290/I-88 Interchange at I-294.

The ramp lane closure is needed to provide a safe work zone for workers and to accommodate drivers while work is underway to remove and reconstruct the northbound I-294 bridges over I-88, as part of the Central Tri-State Tollway (I-294) Project.

Construction in this area is being coordinated with the Illinois Department of Transportation, Village of Berkeley, Village of Hillside, City of Elmhurst, Village of Oak Brook as well as local fire and police departments.

Overnight closures and detours of ramps at the I-290/I-88 Interchange at I-294 are scheduled to continue through the end of the year as needed, as well as closures on I-88. Information including maps and construction updates is available on the Tollway's website at www.illinoistollway.com in the Projects section.

Work in 2023 at the I-290/I-88 Interchange at I-294 includes ongoing reconstruction of bridges over Roosevelt Road, I-88, Butterfield Road, the Canadian National Railroad, I-290 and Electric Avenue and work to build a temporary ramp from southbound I-294 to eastbound I-290 and westbound I-88.

The reconfiguration and reconstruction of the I-290/I-88 Interchange is estimated at \$700-\$800 million and will reduce congestion, improve safety and address operational issues, as well as infrastructure conditions as part of the Illinois Tollway's \$4 billion Central Tri-State Project. Work started in 2020 and is scheduled to be complete by the end of 2026.

Work Zone Safety

Construction zone speed limits are in effect in all construction zones 24/7 and drivers should continue to watch for changing traffic patterns and use caution, especially when workers are present. On I-294, a 45 mph work zone speed limit is in effect throughout the construction season.

The Illinois Tollway reminds motorists that the "Move Over Law" requires motorists to change lanes or to slow down and proceed with caution when passing any vehicle on the side of the road with hazard lights activated. If you see flashing lights ahead, please move over or slow down. On I-294, a 45 mph work zone speed limit is in effect throughout the construction season.

Illinois State Police have zero tolerance for drivers speeding in work zones or failure to comply with the Move Over Law. The minimum penalty for speeding in a work zone is \$250 with up to a \$25,000 fine and a 14-year jail sentence for hitting a roadway worker. Penalties for failure to slow down or move over for a vehicle on the shoulder with flashing lights includes up to a \$10,000 fine, 2-year suspension of driving privileges and jail time, in extreme cases.

About Move Illinois

The Illinois Tollway's 15-year, \$14 billion capital program, *Move Illinois: The Illinois Tollway Driving the Future*, is improving mobility, relieving congestion, reducing pollution, creating as many as 152,000 jobs

and linking economies throughout the region. The first 11 years of *Move Illinois* are on schedule and within budget, delivering the rebuilt and widened Jane Addams Memorial Tollway (I-90) as a state-of-the-art 21st century corridor and opening a new interchange connecting the Tri-State Tollway (I-294) to I-57. Progress continues on projects addressing the remaining needs of the existing Tollway system, delivering the Elgin O'Hare Western Access Project and reconstruction of the Central Tri-State Tollway (I-294).

About the Illinois Tollway

The Illinois Tollway is a user-fee system that receives no state or federal funds for maintenance and operations. The agency maintains and operates 294 miles of roadways in 12 counties in Northern Illinois, including the Reagan Memorial Tollway (I-88), the Veterans Memorial Tollway (I-355), the Jane Addams Memorial Tollway (I-90), the Tri-State Tollway (I-94/I-294/I-80) and the Illinois Route 390 Tollway.

###