

PROFESSIONAL SERVICES BULLETIN 23-1

ADDENDUM No. 1

Addendum No. 1 does not change the due date or time.

STATEMENTS OF INTEREST (SOIs) are due by 4:30:00 p.m. (Central Time)

Due Date: March 17, 2023

Successful Firm(s) will be notified.

Overall results will be posted on the Illinois Chief Procurement Officer's eProcurement System at: <https://www.bidbuy.illinois.gov/>

Professional Services Bulletin

No. 23-1

February 23, 2023

Addendum No. 1

ILLINOIS TOLLWAY web site: www.illinoistollway.com



Illinois Tollway
2700 Ogden Avenue, Downers Grove, IL 60515

**ADDENDUM NO 1
TO
PROFESSIONAL SERVICES BULLETIN No 23-1**

Addendum No. 1 does not change the due date or time. Statements of Interest are due via the e- Builder process: <http://www.e-builder.net> to the Illinois State Toll Highway Authority, by 4:30:00 p.m. Central Time, March 17, 2023.

***** ATTENTION*****

Please note that the following Firm's Commitment and Signature Form has been updated on the Tollway's website, is required to be used in your Statement of Interest submittal.

ADDENDUM No. 1 / REVISION DATE: February 23, 2023

In the "New to this PSB" updated spelling Exhibit to Exhibit

Part I The Schedule 1.2.1, The question due date was updated, from March 17, 2023 to "March 7, 2023"

1.4 Professional Services Bulleting No. 23-1 Item Index updated description to add "Systemwide".

1.5.PSB Item Details 1.5.1 Item 1 updated description to add "Systemwide"

Firm's Commitment and Signature Form Item 11 NOTE: has been updated to the percentage inserted in the SOITEAM will take precedence over any other percentage inserted in the LOI data in the event of a discrepancy.

The PowerPoint Presentation, Recording and Sign-In sheet from the Pre-Proposal Meeting held on February 17, 2023 are included in this Addendum.

NEW TO THIS PSB

- Update to Section 2.7 to reflect change in certifying entity for Veteran Owned Small businesses, from Central Management Services (CMS) to the State of Illinois Commission on Equity and Inclusion (CEI).
- Update to Exhibit F VOSB Participation and Utilization Plan to reflect change in certifying entity, from Central Management Services (CMS) to the State of Illinois Commission on Equity and Inclusion (CEI).
- A pre-proposal meeting will be held on Friday, February 17, 2023 at 10:00:00 am (CT).

PART I: THE SCHEDULE

1.1 CONTACT INFORMATION

Illinois State Toll Highway Authority (ISTHA)
2700 Ogden Avenue
Downers Grove, IL 60515

PSB 23-1 Coordinator: csstaff@getipass.com

PSB 23-1 Tech Support: ebuilder@getipass.com

PSB 23-1 eBuilder Training: ebuilder@getipass.com

-

1.2 23-1 OFFICIAL NOTICE

This Professional Services Bulletin 23-1 (PSB 23-1) is the official notice of needed professional services for the Illinois State Toll Highway Authority (“Illinois Tollway”, “Tollway”), as authorized by the Architectural, Engineering, and Land Surveying Qualifications Based Selection Act, (30 ILCS 535/1, *et seq.*). This PSB contains information pertaining to the advertisement for Statements of Interest (SOI) and is part of the Chief Procurement Officer eProcurement System for the Illinois State Toll Highway Authority. PSB **23-1**, including all Exhibits and forms, is available on the Illinois Tollway’s website at: <https://www.illinoistollway.com/doing-business/construction-engineering/bids-bulletins-awards>. Additional information is also posted on the Illinois Chief Procurement Officer’s eProcurement System at: <https://www.bidbuy.illinois.gov/>. For instructions on accessing the Illinois Tollway website, PSB, and Exhibits please refer to the Table of Contents. Instructions on receiving procurement opportunities are included in the “Illinois eProcurement BidBuy Notice” section of this PSB.

1.2.1 PSB 23-1 SUMMARY

Information for the e-Builder process for PSB **23-1** can be found in the Public Folder at: <https://app.e-builder.net/public/PublicFolderView.aspx?FolderID={dc0355ee-4323-458e-91b5-547c6655b5f5}>

You will need the following before you can submit an SOI in e-Builder:

- e-Builder resources, including PSB SOI user manual, FAQ file, and videos (see Public Folder link above)
- Webinar Training (see Section 3.7 Useful Links for training webinar registration link)
- e-Builder Login ID (see Section 3.4 Submittal Instructions)
- Firm Code Name (see Section 3.4 Submittal Instructions)

A pre-proposal meeting will be held on Friday, February 17, 2023 at 10:00:00 am (CT).

<https://illinois2.webex.com/illinois2/onstage/g.php?MTID=e3f2cd234d077d729f152ccd48796df4f>

All questions related to this PSB must be submitted electronically through the e-Builder SOI Mailbox at [PSB 23-1.01 Questions and RFIs@docs.e-builder.net](mailto:PSB_23-1.01_Questions_and_RFIs@docs.e-builder.net) no later than **March 7, 2023 at 4:30:00 pm (CT)**. The subject line should read: PSB 23-1 Question. Answers will be addressed via an Addendum published on the Tollway website and the Illinois eProcurement site, BidBuy. For e-Builder technical questions, please contact the e-Builder PSB Tech Support: ebuilder@getipass.com.

1.4 PROFESSIONAL SERVICES BULLETIN NO. 23-1 ITEM INDEX

No.	Project No. / County	Description	Page No.
1	RR-21-9245R / Systemwide	Systemwide, Intelligent Transportation System (ITS) Development and System Management	A-1R
2	MO-21-1281R / Systemwide	Systemwide, Pavement Management, Technical Assistance, and Materials Engineering Design Support	A-3

1.5 PSB ITEM DETAILS

1.5.1 Item 1 - RR-21-9245R, Systemwide, Intelligent Transportation System (ITS) Deployment and System Management.

This project has a 26.0% D/M/WBE participation goal and 3.0% VOS/SDVOSBE participation goal.

Deployment and maintenance services are required to support the installation and continued operation of the Illinois Tollway's ITS that is used to manage and monitor traffic and aid in roadway emergency and incident response.

General Description and Background

The Illinois Tollway has deployed and operates Intelligent Transportation System (ITS) equipment such as closed-circuit television (CCTV) cameras, vehicle detectors, permanent dynamic message signs (DMS), weigh-in-motion (WIM) systems, Road Weather Information Systems (RWIS) and Lane Control Signs (LCS). This ITS equipment is connected by various Cisco layer 3 switches on a dedicated fiber optic and wireless communication network. These roadside devices and switches are initially configured by the Tollway and provided to general contractor(s) for installation. The devices are operated and managed from a Traffic Operations Center (TOC) located at the Tollway's Central Administration (CA) building in Downers Grove, IL through the Traffic Incident Management System (TIMS) software. The Tollway requires services that shall include issuance of tasks to a general contractor for maintenance and repair work performed through a field maintenance contract, managing tasks issued to the field maintenance contract as well as maintenance and network support services for the ITS equipment.

This contract is anticipated to provide for up to a two (2) year term, with two, (1) one-year option or one (1) two-year option to renew, subject to the Tollway's periodic review, approval and satisfaction with the selected consultant's performance and may be terminated by the Tollway at any time upon a stipulated notice period or extended upon agreement of both parties.

The selected consultant shall provide services that include the following:

1. Program Management - Manage the Tollway's ITS field maintenance contract and oversee ITS network which includes, but is not limited to:
 - Contract administration for the ITS field maintenance contract
 - Monitoring and reporting on the Tollway's field and network devices to ensure uptime requirements are met
 - Manage a preventative maintenance plan as developed and directed by the Tollway
 - Perform plan reviews (Design, Construction, Configuration, Installation) to ensure Tollway specifications are being met
 - Coordination with internal / external Tollway stakeholders
2. ITS Maintenance and Device Configuration – Administer the Tollway ITS maintenance program which includes, but is not limited to:
 - Configure various ITS devices
 - Provide initial trouble ticket triage
 - Provide trouble ticket field investigation and remediation
 - Assign above cabinet trouble tickets to ITS maintenance contractor
 - Attend various internal and external stakeholder meetings

The selected Consultant will provide on-site staff at the CA for support upon request including field technicians able to test and inspect low-voltage networks. The Consultant will be required to have staff available on-call 24/7/365 as required by the Tollway, with an on-site response time of a maximum of two (2) hours, if required.

The prime firm must be prequalified by IDOT in the following category:

Special Services (Electrical Engineering)

The Tollway will allow a Prime Consultant to meet the prequalification for Special Services (Electrical Engineering) through a subconsultant.

8. **Exhibit D: Availability of Key Project Personnel:** Consultant is submitting with its SOI Exhibit D, which must include Key personnel as identified in the item detail, for both Prime and Subconsultants and is attached as a separate document in e-builder.
 Yes No Not Applicable
9. **Exhibit E: Partnering for Growth Memorandum of Understanding:** Consultant is submitting Exhibit E with the SOI if the SOI identifies a D/M/WBE Mentor-Protégé partnership and/or a VOSB Mentor-Protégé Partnership. The requirements are described in detail in Exhibit E. Consultant entered the DBE and/or VOSB commitment and percentage breakdowns in the SOITEAM data section and is attached as Exhibit E as a separate document in e-Builder.
 Yes No Not Applicable
- 9a. Exhibit E: Reverse DBE/VOSB-Partnering for Growth Memorandum of Understanding:** Consultant is submitting Exhibit E with the SOI if the SOI identifies a mentor-protégé arrangement with the subconsultant mentoring.
 Yes No Not Applicable
10. **Exhibit F: State of Illinois Veteran Small Business Participation and Utilization Plan and Letter of Intent:** Consultant is submitting with its SOI the State of Illinois Veteran Small Business Participation and Utilization Plan and Letter of Intent for items that include a VOSB and is attached as a separate document in e-Builder.
 Yes No Not Applicable
- 10a. Exhibit H: DBE and Utilization Plan and Letter of Intent: Consultant** is submitting with its SOITeam data and Letter of Intent for items that include a DBE goal and is attached as a separate document in e-Builder.
 Yes No Not Applicable
11. **SOITEAM Data:** Consultant has identified the Prime, Subconsultant(s) and DBE and VOSB/SDVOB percentage breakdowns, verified percentage totals of work are equal to 100%, and left no blank cells. Ranges and “TBD” are not acceptable. the prime can only select one D/M/WBE category but may provide evidence of multiple certifications by attaching any supporting documentation in the attachments tab before submitting. **NOTE: the percentage inserted in the SOITEAM will take precedence over any other percentage inserted in the LOI data in the event of a discrepancy.**
 Yes No Not Applicable
12. **Vendor Disclosures (formerly Forms A) or IPG Active Registration Vendor Disclosures (formerly Forms B) and Illinois Tollway Standard Business Terms and Conditions:** Consultant is submitting certification and disclosure forms and Illinois Tollway Terms and Conditions for itself and its Team member firms. The Disclosures are submitted in pdf format and labeled as described in 4.4 Submittal instructions, using the SOI FIRM NAME CODE provided by the Illinois Tollway. Consultant understands that incomplete or missing documentation will render the SOI submittal disqualified (attached as a separate document in e-Builder).
 Yes No
13. **Illinois State Board of Elections Registration:** Consultant understands that Primes may be required to be registered with the Illinois State Board of Elections prior to the submittal of the SOI, and has enclosed a copy of the registration certificate with the Certification / Disclosure forms if applicable and is attached as a separate document in e-Builder.
 Yes No



Capital Program

PRE-PROPOSAL MEETING AGENDA

MEETING PURPOSE: PSB 23-1
MEETING DATE: February 17, 2023
MEETING TIME: 10:00 am
CHAIRPERSON: Vanessa Ramos, Senior Contract Negotiator
LOCATION: Illinois Tollway WebEx

TO:

<u>Names</u>	<u>Initials</u>	<u>Organization / Title</u>
Eric Occomy	EO	Procurement / Chief of Contract Services
Maria Campuzano	MC	Procurement / Deputy Chief of Procurement
Sainey Jobe	SJ	Procurement / Deputy Chief of Contract Compliance
Danna Hall	DH	Procurement/Contract Services Manager
Vanessa Ramos	VR	Procurement / Senior Contract Negotiator
Tamela Reed-McClinton	TRM	Procurement / Compliance
Alexander Karahalios	AK	Diversity / Program Coordinator
Cindy M Williams	CMW	Engineering/ Chief of Implementation
Rob Glaz	RG	Engineering / ITS Manager

TOPICS TO BE DISCUSSED:

- 1.0 Open: Welcome; Self-introduction by Procurement Representative**
- 2.0 Self-Introduction of Attendees – State name and affiliation loudly for all to hear**
(Please sign-in using the provided sign-in sheet)
 - 2.1 Tollway Procurement – Contract Services
 - 2.2 Tollway Procurement – Contract Compliance
 - 2.3 Tollway- Diversity
 - 2.4 Tollway- Engineering Project Manager
 - 2.5 Tollway- ITS Manager
- 3.0 Submission Highlights (by Procurement Representative)**
 - 3.1 State of Interest (SOI)
 - 3.2 Exhibit A Proposed Key Staff
 - 3.3 Exhibit C Instructions for Completing Exhibit C and Current Obligations form
 - 3.4 Exhibit D Availability of Key Project Personnel
 - 3.5 Exhibit E-DBE/VOSB: Partnering for Growth (P4G)
 - 3.6 Exhibit E-Reverse DBE/VOSB: Partnering for Growth
 - 3.7 Exhibit F Veteran Small Business Participation and Utilization Plan
 - 3.8 Exhibit H DBE Participation and Utilization Plan
 - 3.9 Illinois Tollway Standard Business Terms and Conditions
 - 3.10 SOITEAM Grid Data



Capital Program

PRE-PROPOSAL MEETING AGENDA

- 3.11 Firm's Commitment and Signature form
- 3.12 Certification Disclosure Forms

4.0 **Avoid Disqualification** (by Procurement Representative)

- 4.1 Late Submissions
- 4.2 Failure to submit the Statement of Interest (SOI)
- 4.3 Disclosures (DS)
- 4.4 Omission of State of Illinois requirements
- 4.5 Inability to meet eligibility requirements

5.0 **Submission via e-Builder** (by Engineering)

- 5.1 Section 1.2.1 PSB 23-1 Summary
- 5.2 E-Builder resources
- 5.3 Webinar Training (see Section 3.7)
- 5.4 e-builder Login ID (see Section 3.4)
- 5.5 Firm Code Name (see Section 3.4)
- 5.6 This is not an invitation for bids. Consultants properly prequalified for the projects listed herein may indicate their desire to be considered for selection by submitting an SOI to the Illinois Tollway via the e-Builder PSB 23-1 SOI process.
- 5.7 The Illinois Tollway follows the Qualifications Based Selection (QBS) process mandated by Illinois statute (30 ILCS 535: Architectural, Engineering, and Land Surveying Qualifications Based Selection Act) for selecting qualified Consultants under this PSB.

6.0 **PSB Schedule** (by Procurement Representative)

- 6.1 Last Day for Questions no later than March 7, 2023* at 4:30:00 pm Central Time
- 6.2 Complete SOI's are due no later than March 17, 2023 at 4:30:00 pm Central Time including all required Attachments/Exhibits as specified in this PSB
 - 6.2.1 All submittals for this PSB will be received through the Illinois Tollway's e-Builder PSB SOI process at: <https://app.e-builder.net/>.
- 6.3 Selection Committee Meeting March/April 2023
- 6.4 Estimated Board Approval May 2023
- 6.5 Estimated Notice to Proceed July 2023

7.0 **Submittal of Questions** (by Procurement Representative)

- 7.1 All questions related to this PSB must be submitted electronically through e-builder SOI mailbox at PSB_23-1.01_Questions_and_RFIs@docs.e-builder.net
- 7.2 PSB 23-1 Questions are due March 7, 2023 at 4:30:00 pm (CT)
- 7.3 Answers will be addressed via Addendum published on the Tollway Website and the Illinois eProcurement site-BidBuy.



Capital Program

PRE-PROPOSAL MEETING AGENDA

- 7.4 Information for the e-Builder process for PSB 23-1 can be found in the Public Folder at:
<https://app.e-builder.net/public/PublicFolderView.aspx?FolderID={dc0355ee-4323-458e-91b5-547c6655b5f5}>

8.0 Tollway Compliance Requirements (by Compliance Representative)

- 8.1 Exhibit F
 - 8.1.1 VOSB Utilization Plan for Professional Services
 - 8.1.2 Letter of Intent
- 8.2 Exhibit H
 - 8.2.1 Current Letter of Certification
- 8.3 M/W/DBE and VOSB Letter of Intent
 - 8.3.1 Current Letter of Certification
 - 8.3.2 Required DBE/VOSB Forms: Utilization Plan and Letters of Intent
 - 8.3.3 DBE and VOSB Letter of Intent
 - 8.3.4 Prime Contractors must submit the letter of Intent for its DBE and VOSB subcontractors including for a self-performing prime.
 - 8.3.5 Please be specific about the scope(s) of work to be performed and associated NAICS/NIPG codes to demonstrate the performance of a commercially useful function
- 8.4 Other Forms
 - 8.4.1 DBE and VOSB Forms (if applicable); Good Faith Efforts
- 8.5 Item 1 RR-21-9245R Systemwide, Intelligent Transportation System (ITS) Deployment and System Management
 - 8.5.1 Disadvantaged Business Enterprise Program (D/M/WBE) goal:
26%
 - 8.5.2 Veteran Owned Small Business Program (VOSB) goal:
3%
- 8.6 Item 2- MO-21-1281R, Systemwide, Pavement Management, Technical Assistance, and Materials Engineering Design Support
 - 8.6.1 Disadvantaged Business Enterprise (D/M/WBE) goal:
20%
 - 8.6.2 Veteran Owned Small Business Program (VOSB) goal:
3%
- 8.7 Disadvantage Business Enterprise Program Certifications
 - 8.7.1 DBE Certifications
 - 8.7.2 Illinois Unified Certification Program (ILUCP):
Illinois Department of Transportation (IDOT)
Chicago Transit Authority (CTA)
Metra
Pace
City of Chicago
 - 8.7.3 MBE/WBE Certifications
City of Chicago
Cook County
 - 8.7.4 SBA 8(a) Certification



Capital Program

PRE-PROPOSAL MEETING AGENDA

- 8.7.5 U.S. Small Business Administration
- 8.8 VOSB or SDVOSB Certification
- 8.9 State of Illinois Commission on Equity and Inclusion
 - 8.9.1 Formerly known as Central Management Services (CMS)
- 8.10 51 percent owned and controlled by a qualified veteran living in Illinois.

9.0 Diversity Programs – Overview of Available Programs (by Diversity Representative)

- 9.1 Partnering for Growth (P4G)
- 9.2 Technical Assistance Program

10.0 Item 1 Systemwide, Intelligent Transportation System (ITS) Deployment and System Management (RR-21-9245R (by Engineering))

- 10.1 General Description and Background
- 10.2 Intelligent Transportation System (ITS)
 - 10.2.1 CCTV Cameras
 - 10.2.2 Vehicles Detectors
 - 10.2.3 Dynamic Message Signs (DMS)
 - 10.2.4 Lane Control Signs (LCS)
 - 10.2.5 Weigh-in-Motion (WIM)
 - 10.2.6 Roadway Weather Information Systems (RWIS)
- 10.3 ITS Equipment Growth (*ITS Equipment deployed*)
- 10.4 Typical Tasks
 - 10.4.1 Program Management
 - Oversee ITS network
 - Manage ITS Maintenance contract
 - 10.4.2 ITS Maintenance and Device Configuration
 - Configure various ITS devices
 - Provide trouble ticket field investigation and remediation
- 10.5 Key Personnel
 - 10.5.1 Project Manager
 - Must be Illinois Licensed Professional Engineer
 - 10.5.2 TIMS Support Engineer
 - Strong understanding of digital communication
 - Responsible for Monitoring network devices
 - 10.5.3 ITS Maintenance Logistics Technician
 - Background in construction management, estimating, scheduling and inventory control
- 10.6 Additional Expectations
 - 10.6.1 Field Support
 - On-site support staff at out central office upon request



Capital Program

PRE-PROPOSAL MEETING AGENDA

- Field technicians able to work on low-voltage networks
- Maintenance vehicle, tools and test equipment needed under contract
- Staff available on-call 24/7/365 as required by the Tollway, with an on-site response of two (2) hours, if required

11.0 **Item 2 Systemwide, Pavement Management, technical Assistance, and Materials Engineering Design Support (MO-21-1281R)**

11.1 MO-21-1281R

11.1.1 Systemwide, Pavement Management, technical Assistance, and Materials

Engineering Design Support

- Pavement and Asset Management and Condition Monitoring
- Support Services

11.1.2 Pavement and Asset Management and Condition Monitoring

- Annual collection of digital images and laser crack measurement system (LCMS) sensor data of all lanes, all directions, for the Tollway's mainline pavements (294 centerline miles, 2296 lane miles) with ramp pavements (476 ramps) included every other year.
- Calculate condition rating survey (CRS) values according to the established Illinois Department of Transportation methodology.
- Determine the remaining service life (RSL) for each homogenous Tollway pavement segment.
- Prepare an annual pavement management system report.
- Maintain the pavement asset management plan (PAMP) and the ramp asset management plan (RAMP).
- Annually, process and deliver a complete set of digital images to the Tollway.
- Annually, measure all lane line (skip dash) in-place pavement markings for presence and retro reflectivity and provide recommendations for re-striping where necessary.
- Annually, evaluate smoothness across all mainline bridges and associated structural/pavement elements (approach and transitions).
- Biennially, or as requested, measure and evaluate Tollway pavement friction every 0.1 mile in both directions across the system.
- Maintain records or databases of existing roadway conditions, pavement designs, and provide technical assistance in these areas as requested.

11.1.3 Support Services



Capital Program

PRE-PROPOSAL MEETING AGENDA

- Maintain and manage the existing Illinois Materials Information and Reporting System (I-MIRS).
 - I-MIRS stores aggregate, asphalt, concrete, and tack coat test results for QC, QA, and IA.
- Provide an evaluation of current I-MIRS system to include upgrades or potential replacement to ensure proper QC/QA compliance.
- Maintain and manage the existing Illinois Materials Information and Reporting System (I-MIRS).
- I-MIRS stores aggregate, asphalt, concrete, and tack coat test results for QC, QA, and IA.
- Provide an evaluation of current I-MIRS system to include upgrades or potential replacement to ensure proper QC/QA compliance.
- Assist the Tollway in the development and refinement of pavement and related infrastructure design standards and construction specifications.
- Assist the Tollway in developing pavement and structural rehabilitation and reconstruction methods and material improvements based upon the latest research and performance.
- Assist with the Tollway's evaluation of sustainability of Tollway practices and projects via the Tollway's INVEST program and calculation of environmental impacts.
- Provide engineering support to assist the Tollway with design reviews, development and revisions to Special Provisions and Tollway Standards.
- Provide direct materials engineering support to Tollway Materials including full time on-site materials engineering support for field and office materials engineering tasks. The consultant will also coordinate activities and products with other consultants under contract with the Tollway.

11.2 MO-21-1281R, Qualifications

11.2.1 No IDOT prequalification for this item

11.2.2 Team must demonstrate they are equipped and have experience with the following:

- Digital pavement survey vehicle that includes a LCMS to acquire high resolution 3D pavement profiles and a 360° panoramic imaging system
- Performing pavement condition surveys
- Falling weight deflectometer (as-needed)
- Vehicle mounted ground penetrating radar for pavement and bridge deck analysis



Capital Program

PRE-PROPOSAL MEETING AGENDA

- Locked wheel friction tester
 - Mobile and handheld pavement marking retro reflectometers
- 11.3 Must demonstrate experience using:
 - AASHTO Pavement ME Design
 - I-MIRS and/or demonstrated experience working in SQL RDS environment
 - Pavement management software
- 11.4 20% D/M/WBE participation goal and 3% VOSB participation goal
- 11.5 MO-21-1281R, Key Personnel
 - 11.5.1 Key Personnel
 - Project Manager
 - Pavement design engineer
 - Pavement management engineer
 - On-Site material engineer
 - I-MIRS user support liaison
- 11.6 MO-21-1281R, Schedule
 - 11.6.1 This project is scheduled to start in Fall 2023
 - 11.6.2 Substantial completion of this project is anticipated to be 48 months after authorization to proceed.
- 12.0 Revisions to PSB/Addenda (by Procurement)**
 - 12.1 All questions must be submitted no later than March 7, 2023 at 4:30 pm Central Time
 - 12.2 Addendum to follow in the week of March 10, 2023

ILLINOIS TOLLWAY

Professional Services Bulletin 23-1

Pre-Proposal Meeting

Procurement Department
February 17, 2023



ATTENDEE INSTRUCTIONS

- All attendees must sign into WebEx via chat with name and company affiliation
- Questions should be sent to [PSB_23-1.01_Questions_and RFIs@docs.e-builder.net](mailto:PSB_23-1.01_Questions_and_RFIs@docs.e-builder.net)
- Attendee audio feature will not be activated during this pre-proposal meeting



AGENDA

- **Introduction**
- **PSB Submission highlights**
- **PSB Non-Curable Items**
- **eBuilder Instructions**
- **PSB Schedule**
- **PSB Questions Submittal**
- **Tollway Compliance Requirements**
- **Diversity Department Programs**
- **Engineering Special Items to Note**
- **Revisions to PSB/ Addenda**



INTRODUCTION

- Tollway Procurement – Contract Services- Vanessa Ramos
- Tollway Procurement – Contract Compliance- Tamela Reed-McClinton
- Tollway Diversity - Alexander Karahalios
- Deputy Chief of Implementation- Cindy Williams
- ITS Manager- Rob Glaz



SUBMISSION HIGHLIGHTS

The Following Exhibits and Data Shall Be Submitted In Accordance with The PSB Submittal Instructions **and Shall Be Downloaded From The Illinois Tollway Website for PSB 23-1**.

All Exhibits Submitted for This PSB Must Be Current. Exhibits From Previous PSBs Will Not Be Accepted.

All submittals for this PSB will be received through the Illinois Tollway's e-Builder PSB SOI process at: <https://app.e-builder.net/>. Contact ebuilder@getipass.com for training and login information.

- **Statement of Interest (SOI): Submit one per item proposed**
- **Exhibit A: Proposed (Key) Staff**
 - Required - Submit as a separate pdf document.
 - List all required Key Project Personnel and must include resumes
- **Exhibit C: Instructions for Completing Exhibit C and Current Obligations form**
 - Required - Submit as a separate pdf document.



SUBMISSION HIGHLIGHTS continued,

- **Exhibit D: Availability of Key Project Personnel**
 - Required - Submit as a separate pdf document.
- **Exhibit E-DBE/VOSB: Partnering for Growth Program (P4G)**
 - If proposing a mentor-protégé arrangement with a DBE or VOSB firm, this Exhibit is required.
 - Submit as a separate pdf document.
- **Exhibit E- Reverse DBE/VOSB: Partnering for Growth Program**
 - If proposing a mentor-protégé arrangement with a DBE or VOSB firm where the subconsultant is mentoring, this Exhibit is required.
 - Submit as a separate pdf document.
- **Exhibit F: Veteran Small Business Participation and Utilization Plan**
 - If the item includes a Veteran Goal, this Exhibit is required.
 - Submit as a separate pdf document.



SUBMISSION HIGHLIGHTS continued,

- **Exhibit H: DBE Participation and Utilization Plan**
 - If the item includes a DBE Goal, this Exhibit is required.
 - Submit as a separate pdf document.
- **Illinois Tollway Standard Business Terms and Conditions**
 - Required - Submit as a separate pdf document.
- **SOITEAM Grid Data**
 - Required, see Section 3.4.3 Instructions for Submitting the SOITEAM Data
- **Firm's Commitment and Signature form**
- **Certification Disclosure Forms**
 - Vendor Disclosure (Formerly Forms A), or
 - IPG Active Registered Vendor Disclosure (Formerly Forms B)



AVOID DISQUALIFICATION

- Late submissions
- Failure to submit the Statement of Interest (SOI)
- Disclosures (DS)
 - Vendor Disclosures (formerly Forms A) or
 - IPG Active Registration Vendor Disclosures (formerly Forms B)
- Omission of State of Illinois requirements
- Inability to meet eligibility requirements as stated in 44 Ill. Admin. Code 625.70, Confirmation of Eligibility.

*Review **3.4.5 COMMON MISTAKES**



SUBMISSION via e-Builder

Section 1.2.1 PSB 23-1 SUMMARY

Information for the e-Builder process for PSB 23-1 can be found in the Public Folder at:

<https://app.e-builder.net/public/PublicFolderView.aspx?FolderID={dc0355ee-4323-458e-91b5-547c6655b5f5}>

You will need the following before you can submit an SOI in e-Builder:

- **e-Builder resources, including PSB SOI user manual, FAQ file, and videos (see Public Folder link above)**
- **Webinar Training (see Section 3.7 Useful Links for training webinar registration link)**
 - Training opportunities are currently scheduled for the following dates:
 - February 21, 2023: 11am-12pm
 - February 23, 2023: 1pm-2pm
 - March 1, 2023: 11am-12pm
 - March 7, 2023: 1pm-2pm
 - March 10, 2023: 11am-12pm
- **e-Builder Login ID (see Section 3.4 Submittal Instructions)**
- **Firm Code Name (see Section 3.4 Submittal Instructions)**



SUBMISSION via e-Builder

This is not an invitation for bids. Consultants properly prequalified for the projects listed herein may indicate their desire to be considered for selection by submitting an SOI to the Illinois Tollway via the e-Builder PSB 23-1 SOI process.

The Illinois Tollway follows the Qualifications Based Selection (QBS) process mandated by Illinois statute (30 ILCS 535): Architectural, Engineering, and Land Surveying Qualifications Based Selection Act) for selecting qualified Consultants under this PSB.



PSB SCHEDULE

- Last Day for Questions no later than March 7, 2023* at 4:30:00 pm Central Time
- Complete SOI's are due no later than March 17, 2023 at 4:30:00 pm Central Time including all required Attachments/Exhibits as specified in this PSB
 - All submittals for this PSB will be received through the Illinois Tollway's e-Builder PSB SOI process at: <https://app.e-builder.net/>.
- Selection Committee Meeting March/April 2023
- Estimated Board Approval May 2023
- Estimated Notice to Proceed July 2023

***Addendum will be issued to correct this date**



SUBMITTAL OF QUESTIONS

- All questions related to this PSB must be submitted electronically through e-builder SOI mailbox at PSB_23-1.01_Questions_and_RFIs@docs.e-builder.net
- PSB 23-1 Questions are due March 7, 2023 at 4:30:00 pm (CT)
- Answers will be addressed via Addendum published on the Tollway Website and the Illinois eProcurement site-BidBuy.
- Information for the e-Builder process for PSB 23-1 can be found in the Public Folder at:
<https://app.e-builder.net/public/PublicFolderView.aspx?FolderID={dc0355ee-4323-458e-91b5-547c6655b5f5}>



Tollway Compliance Requirements



TOLLWAY COMPLIANCE REQUIREMENTS

Required at time of bid for each self-performing prime and each subcontractors

- **Exhibit F:**
 - VOSB Utilization Plan for Professional Services
 - Letter of Intent
- **Exhibit H:**
 - DBE Utilization Plan (SOITEAM) and Letter of Intent for Professional Services
- **M/W/DBE and VOSB:**
 - Current Letter of Certification

Required DBE/VOSB Forms: Utilization Plan and Letters of Intent

- **DBE and VOSB Letter of Intent:**
 - Prime Contractors must submit the Letter of Intent for its DBE and VOSB subcontractors including for a self-performing prime.
 - Please be specific about the scope(s) of work to be performed and associated NAICS/NIGP codes to demonstrate the performance of a commercially useful function.
- **Other Forms:**
 - **DBE and VOSB Forms** (if applicable): Good Faith Efforts



TOLLWAY COMPLIANCE REQUIREMENTS

Item 1 –RR-21-9245R, Systemwide, Intelligent Transportation System (ITS) Deployment and System Management

- Disadvantaged Business Enterprise Program (D/M/WBE) goal:
 - 26.00%
- Veteran Owned Small Business Program (VOSB) goal:
 - 3.00%

Item 2 –MO-21-1281R, Systemwide, Pavement Management, Technical Assistance, and Materials Engineering Design Support

- Disadvantaged Business Enterprise (D/M/WBE) goal:
 - 20.00%
- Veteran Owned Small Business Program (VOSB) goal:
 - 3.00%



DISADVANTAGE BUSINESS ENTERPRISE PROGRAM CERTIFICATIONS

DBE Certifications

Illinois Unified Certification Program (ILUCP):

- Illinois Department of Transportation (IDOT)
- Chicago Transit Authority (CTA)
- Metra
- Pace
- City of Chicago

MBE/WBE Certifications

- City of Chicago
- Cook County

SBA 8(a) Certification

U.S. Small Business Administration



VETERAN OWNER SMALL BUSINESS PROGRAM CERTIFICATIONS

VOSB or SDVOSB Certification

State of Illinois Commission on Equity and Inclusion

- Formerly known as Central Management Services (CMS)

51 percent owned and controlled by a qualified veteran living in Illinois



DIVERSITY DEPARTMENT PROGRAMS

Resources for Emerging Businesses

Partnering for Growth (P4G) Program

- Encourages prime consultants to assist D/M/WBE firms and veteran-owned small businesses
- Mentor and Protégé work on agreed-upon scope designed to help expand the Protégé's technical capabilities and develop skills needed to work with the Tollway
- Proposed relationships require Exhibit E with Statement of Interest

Technical Assistance Program

- Providers can assist with preparation of capabilities statements and Statements of Interest
- Certification and prequalification application assistance
- Relationship building and matchmaking opportunities



PARTNERING for GROWTH

POWERED BY THE ILLINOIS TOLLWAY

Taking your Business to the Next Level



TECHNICAL ASSISTANCE

POWERED BY THE ILLINOIS TOLLWAY

Equipping Businesses for Success





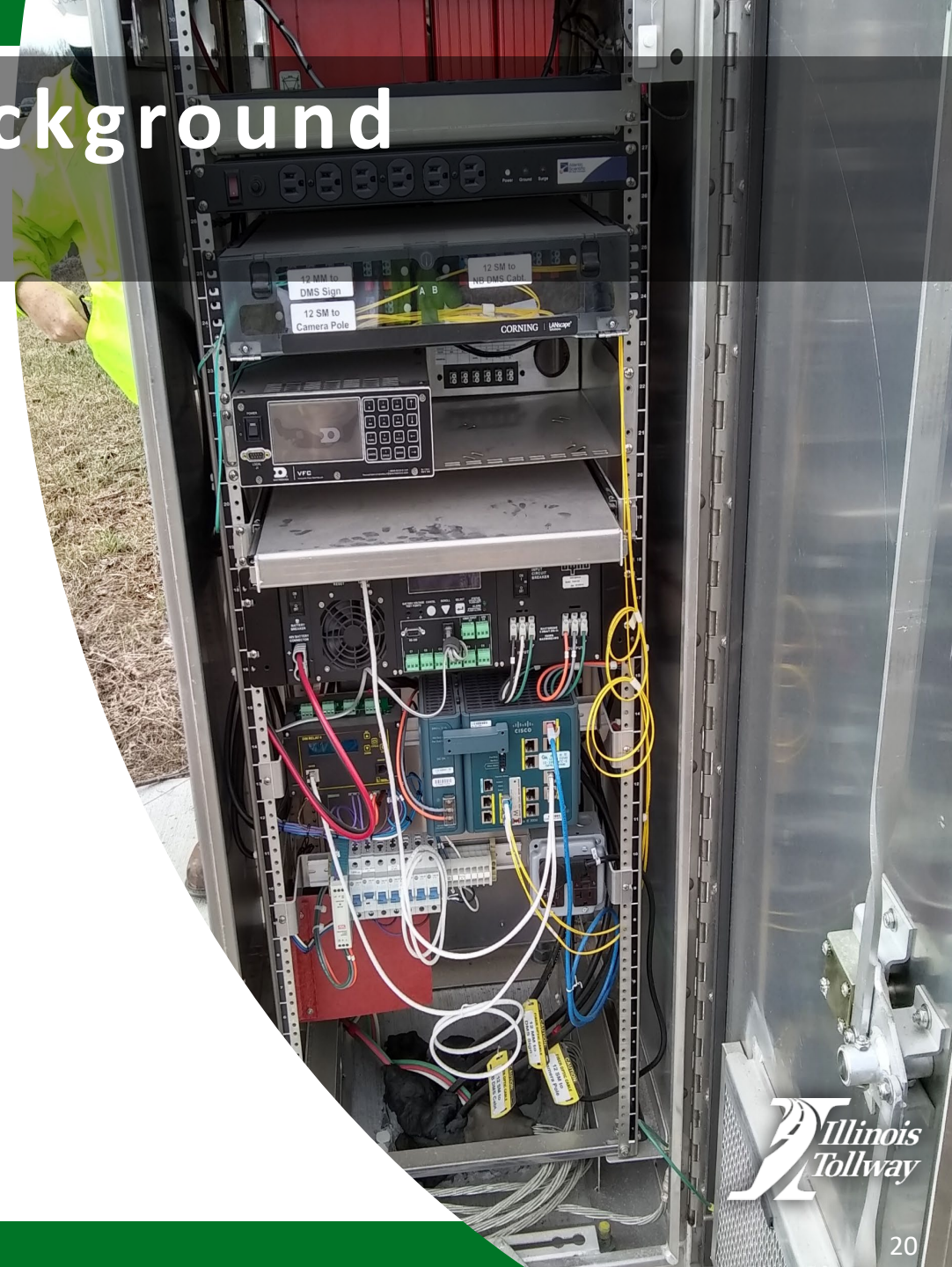
ITEM 1

Intelligent Transportation System (ITS) Deployment and System Management (RR-21-9245R)

General Description and Background

Intelligent Transportation Systems (ITS)

- CCTV Cameras
- Vehicle Detectors
- Dynamic Message Signs (DMS)
- Lane Control Signs (LCS)
- Weigh-in-Motion (WIM)
- Roadway Weather Information Systems (RWIS)



ITS EQUIPMENT GROWTH

ITS equipment deployed

ITS device expansion 2016-2022				
Device type	Total	System expansion	Total	% Increase
	2016	2017 - August 2022	August 2022	2016-2022
Closed-circuit television	1,007	519	1,526	51.5%
Dynamic message signs	71	6	77	8.5%
Lane control signs	376	0	376	0%
Vehicle detection systems	350	122	472	35%
Roadway weather information systems	18	2	20	11%
Weigh-in-motion	5	0	5	0%
Flashing beacon	6	11	17	183%
Devices	1,457	657	2,603	



Typical Tasks

Program Management

- Oversee ITS network
- Manage ITS Maintenance contract

ITS Maintenance and Device Configuration

- Configure various ITS devices
- Provide trouble ticket field investigation and remediation



Key Personnel

Project Manager

- Must be Illinois Licensed Professional Engineer

TIMS Support Engineer

- Strong understanding of digital communications
- Responsible for monitoring network devices

ITS Maintenance Logistics Technician


- Background in construction management, estimating, scheduling and inventory control



Additional Expectations

Field Support

- On-site support staff at our central office upon request
- Field technicians able to work on low-voltage networks
- Maintenance vehicles, tools and test equipment needed under contract
- Staff available on-call 24/7/365 as required by the Tollway, with an on-site response of two (2) hours, if required.



ITEM 2
Systemwide, Pavement Management, Technical Assistance, and Materials Engineering Design Support (MO-21-1281R)

MO-21-1281R

Systemwide, Pavement Management, Technical Assistance, and Materials Engineering Design Support

- Pavement and Asset Management and Condition Monitoring
- Support Services

PAVEMENT MANAGEMENT SYSTEM FOR THE ILLINOIS TOLLWAY

2022 System Update Report

FINAL REPORT

Prepared for
The Illinois Tollway
2700 Ogden Avenue
Downers Grove, Illinois 60515
Tel: (630) 241-6800
Fax: (630) 241-6105

2021 Illinois Tollway Pavement Asset Management Plan - v15

2021 Illinois Tollway Ramp Asset Management Plan - v2

MIRS
Materials Inspection and Reporting System
Illinois Materials Inspection

Illinois Materials Inspection and Reporting System

Username:

Password: [Forgot Password or Username?](#)

Remember me



Pavement and Asset Management and Condition Monitoring

- Annual collection of digital images and laser crack measurement system (LCMS) sensor data of all lanes, all directions, for the Tollway's mainline pavements (294 centerline miles, 2296 lane miles) with ramp pavements (476 ramps) included every other year.
- Calculate condition rating survey (CRS) values according to the established Illinois Department of Transportation methodology.
- Determine the remaining service life (RSL) for each homogenous Tollway pavement segment.
- Prepare an annual pavement management system report.
- Maintain the pavement asset management plan (PAMP) and the ramp asset management plan (RAMP).

Pavement and Asset Management and Condition Monitoring (cont.)

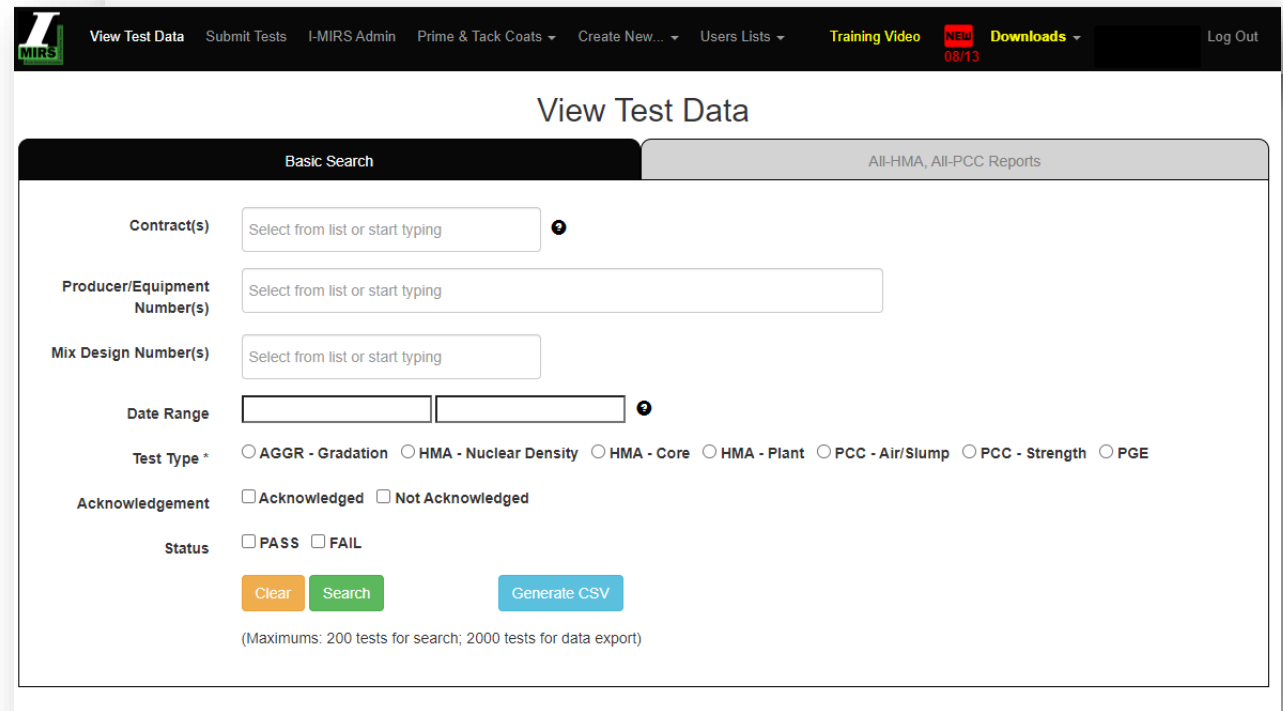
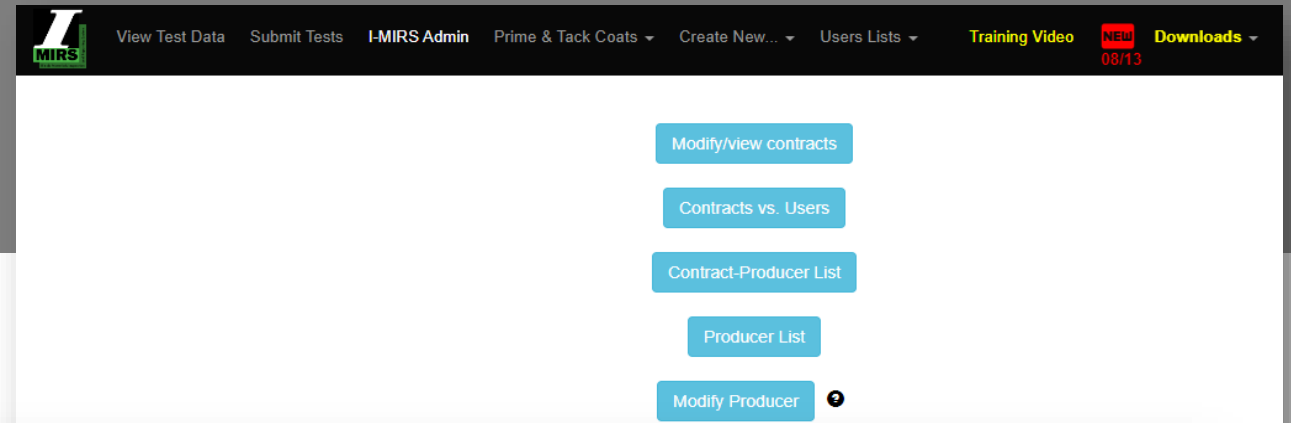
- Annually, process and deliver a complete set of digital images to the Tollway.
- Annually, measure all lane line (skip dash) in-place pavement markings for presence and retro reflectivity and provide recommendations for re-striping where necessary.
- Annually, evaluate smoothness across all mainline bridges and associated structural/pavement elements (approach and transitions).
- Biennially, or as requested, measure and evaluate Tollway pavement friction every 0.1 mile in both directions across the system.
- Maintain records or databases of existing roadway conditions, pavement designs, and provide technical assistance in these areas as requested.

MO-21-1281R

Support Services

- Maintain and manage the existing Illinois Materials Information and Reporting System (I-MIRS).
 - I-MIRS stores aggregate, asphalt, concrete, and tack coat test results for QC, QA, and IA.
- Provide an evaluation of current I-MIRS system to include upgrades or potential replacement to ensure proper QC/QA compliance.

www.i-mirs.com



Support Services (cont.)

- Evaluate and report on the condition of assets maintained by Tollway maintenance forces via the Maintenance Quality Assurance (MQA) program, developed to identify and monitor the effectiveness of the Illinois Tollway's roadway maintenance efforts. Consists of biannual in-field evaluation of assets and the associated maintenance activities and providing ratings using existing Tollway rating manual and check sheets.
- Assist the Tollway with engineering research projects performed by others.
- Surveying of mainline bridge decks using GPR to determine the extent of deterioration and depth-to-steel reinforcement (quarter of the 389 bridges, annually).
- Monitor, evaluate and consult on new and existing pavement and pavement marking test sections and pilot projects.
- Periodic data takeoff and analysis to quantify and evaluate Tollway assets from vehicle imagery on as-needed basis.

Support Services (cont.)

- Assist the Tollway in the development and refinement of pavement and related infrastructure design standards and construction specifications.
- Assist the Tollway in developing pavement and structural rehabilitation and reconstruction methods and material improvements based upon the latest research and performance.
- Assist with the Tollway's evaluation of sustainability of Tollway practices and projects via the Tollway's INVEST program and calculation of environmental impacts.
- Provide engineering support to assist the Tollway with design reviews, development and revisions to Special Provisions and Tollway Standards.
- Provide direct materials engineering support to Tollway Materials including full time on-site materials engineering support for field and office materials engineering tasks. The consultant will also coordinate activities and products with other consultants under contract with the Tollway.

MO-21-1281R, Qualifications

No IDOT prequalification for this item

Team must demonstrate they are equipped and have experience with the following:

- Digital pavement survey vehicle that includes a LCMS to acquire high resolution 3D pavement profiles and a 360° panoramic imaging system
- Performing pavement condition surveys
- Falling weight deflectometer (as-needed)
- Vehicle mounted ground penetrating radar for pavement and bridge deck analysis
- Locked wheel friction tester
- Mobile and handheld pavement marking retro reflectometers

MO-21-1281R, Qualifications (cont.)

Must demonstrate experience using:

- AASHTO Pavement ME Design
- I-MIRS and/or demonstrated experience working in SQL RDS environment
- Pavement management software

20% D/M/WBE participation goal and 3% VOSB participation goal

The Tollway will furnish to the selected consultant team all necessary background files, models, access to historic data, source code, manuals and relevant documentation to facilitate productive startup of services. Tollway will also provide required traffic control support for activities within the Tollway's right-of-way on a coordinated as-needed basis.



MO-21-1281R, Key Personnel

Key Personnel

- Project manager*
- Pavement design engineer*
- Pavement management engineer
- On-site materials engineer
- I-MIRS user support liaison

**Must be a professional engineer. A professional engineer that is licensed in another state can be proposed for this role, but the individual(s) will need to be licensed in Illinois before performing work on this contract.*

MO-21-1281R, Schedule

This project is scheduled to start in Fall 2023.

Substantial completion of this project is anticipated to be 48 months after authorization to proceed.

REVISIONS TO PSB/ADDENDA

- All Questions must be submitted no later than March 7, 2023 at 4:30 pm Central Time
- Addendum to follow in the week of March 10, 2023



Questions may be sent to
PSB_23-1.01_Questions_and_RFIs@docs.e-builder.net



THANK YOU FOR
PARTICIPATING!

PRE-SUBMISSION CONFERENCE SIGN-IN

Bid Description:	PSB 23-1		
BidBuy Number:	23-557THA-ENGCO-B-34337	Solicitation Publication Date:	2/10/2023
		Due Date:	
Vendor Conference Date & Time:	2/17/23 10:00am	Conference Location:	WebEx
Attendance is:	Not Mandatory		

ATTENDEES

PLEASE PRINT CLEARLY

	NAME AND TITLE	COMPANY REPRESENTED	TELEPHONE	EMAIL ADDRESS
1.	Brianna Leibham			bleibham@mandli.com
2.	Dan White			dwhite@imsanalysis.com
3.	YOUNGJAE JU			jea.ju@parsons.com
4.	Russ Bautch		r	uss.bautch@parsons.com
5.	Benjamin Zeman			benjamin.zeman@hdrinc.com
6.	Holly Ryan			hryan@ciobra.com
7.	Christos Achillides			cachillides@iteris.com
8.	Ray Montelongo			ray@monteltech.com
9.	Jason Gaudry			jason.gaudry@monteltech.com
10.	Kevin Barron			kmb@iteris.com
11.	Tollway PSB			s4dts@yahoo.com
12.	Jim Laskero			jlaskero@jwincorporated.com
13.	Hope Garrett			hgarrett@jwincorporated.com

PRE-SUBMISSION CONFERENCE SIGN-IN

	NAME AND TITLE	COMPANY REPRESENTED	TELEPHONE	EMAIL ADDRESS
14.	Joshua Placencio			jplacencio@ciorba.com
15.	Abbas Butt			abbas.butt@eriusa.com
16.	Sirous Alavi			salav@fugro.com
17.	Caahlen McAtee			caahlen.mcatee@hdrinc.com
18.	Sudhaker Doppalapudi			dsrao@interraservices.com
19.	Joseph Catalano			joseph.catalano@mbakerintl.com
20.	Cindy MacDonald			cmacdonald@mandli.com

STATE EMPLOYEES IN ATTENDANCE

1.	Belynzia Coleman			bcoleman@getipass.com
2.	Laura Durkin			ldurkin@geipass.com
3.	Ruth Howe			rahowe@getipass.com
4.	EMINA Hukic-Hamzic			ehukic-hamzic@getipass.com
5.	Cindy Williams			cmwilliams@getipass.com
6.	Lindia Myers			lmyers@getipass.com

PRE-SUBMISSION CONFERENCE SIGN-IN

Bid Description:	PSB 23-1		
BidBuy Number:	23-557THA-ENGCO-B-34337	Solicitation Publication Date:	2/10/2023
		Due Date:	
Vendor Conference Date & Time:	2/17/23 10:00am	Conference Location:	WebEx
Attendance is:	Not Mandatory		

ATTENDEES

PLEASE PRINT CLEARLY

	NAME AND TITLE	COMPANY REPRESENTED	TELEPHONE	EMAIL ADDRESS
1.	Ryan Hanks			ryan.hanks@wsp.com
2.	Michelle Stracener			michelle.stracener@atkinsglobal.com
3.	David Bratton			dbratton@imsanalysis.com
4.	Sadaf Khosravifar			skhosravifar@imsanalysis.com
5.	Kari Pozzessere			karl.pozzessere@aecom.com
6.	Bill Vavrik			wvavrik@ara.com
7.	Nick Messick			nmessick@imsanalysis.com
8.	Michael Harrell			mharrell@ara.com
9.	Sharie Carter-Bane			sharie.carter-bane@sc-binc.com
10.	Hari Priya			haripriya.pemmaraju@eriusa.com
11.	Thomas Wilson			twilson@ara.com
12.	Austin Povost			apovost@transmartinc.com
13.	Sanjeey BANDI			sbandi@interraservices.com

PRE-SUBMISSION CONFERENCE SIGN-IN

	NAME AND TITLE	COMPANY REPRESENTED	TELEPHONE	EMAIL ADDRESS
14.	Edward Schoonveld			eschoonveld@jwincorporated.com
15.	Vahid Ganji			vganji@mbakerintl.com
16.	Nathan Kebede			nkebede@mbakerintl.com
17.	Scott Rodseth			scott.rodseth@mbakerintl.com
18.				
19.				
20.				

STATE EMPLOYEES IN ATTENDANCE

1.	Shelly Jones			sjones@getipass.com
2.	Lorena Ponce			lponce@getipass.com
3.	Carrie Williamson			cwilliamson@getipass.com
4.	Brittany Tatum			brittany.tatum@illinois.gov
5.	Kathi Hacking			khacking@getipass.com
6.	Tamela Reed-McClinton			treedmcclinton@getipas.com