



*Move Illinois:  
The Illinois Tollway Driving the Future*

# NEWS

**FOR IMMEDIATE RELEASE**

**March 7, 2016**

**ROADWORK RESUMES ON EASTBOUND JANE ADDAMS MEMORIAL TOLLWAY (I-90)  
BETWEEN TRI-STATE TOLLWAY (I-294) AND RIVER ROAD**

*Eastbound traffic shifts scheduled for roadway reconstruction*

**DOWNERS GROVE, IL** – Traffic shifts are scheduled to begin this week on the eastbound Jane Addams Memorial Tollway (I-90) between the Tri-State Tollway (I-294) and River Road, as work resumes to complete roadway reconstruction this year. Electronic message signs and construction signage will be put in place to alert drivers to the new traffic pattern.

Removal and full reconstruction of the eastbound lanes between I-294 and River Road started in 2015 to replace the old, worn-out roadway with new pavement to better serve customers. In 2016, work is scheduled to complete pavement reconstruction and replacement of the eastbound bridge carrying I-90 traffic over the Des Plaines River, as well as bridge painting on the I-190 bridge over I-90. The westbound roadway between the Kennedy Expressway and I-294 was rebuilt in 2014.

Due to space limitations on I-90, several phases of traffic shifts, including lane reductions on I-90 and at the River Road Toll Plaza, will be needed and will continue through the summer to complete the roadway replacement. Up to 76,000 vehicles travel in this section daily.

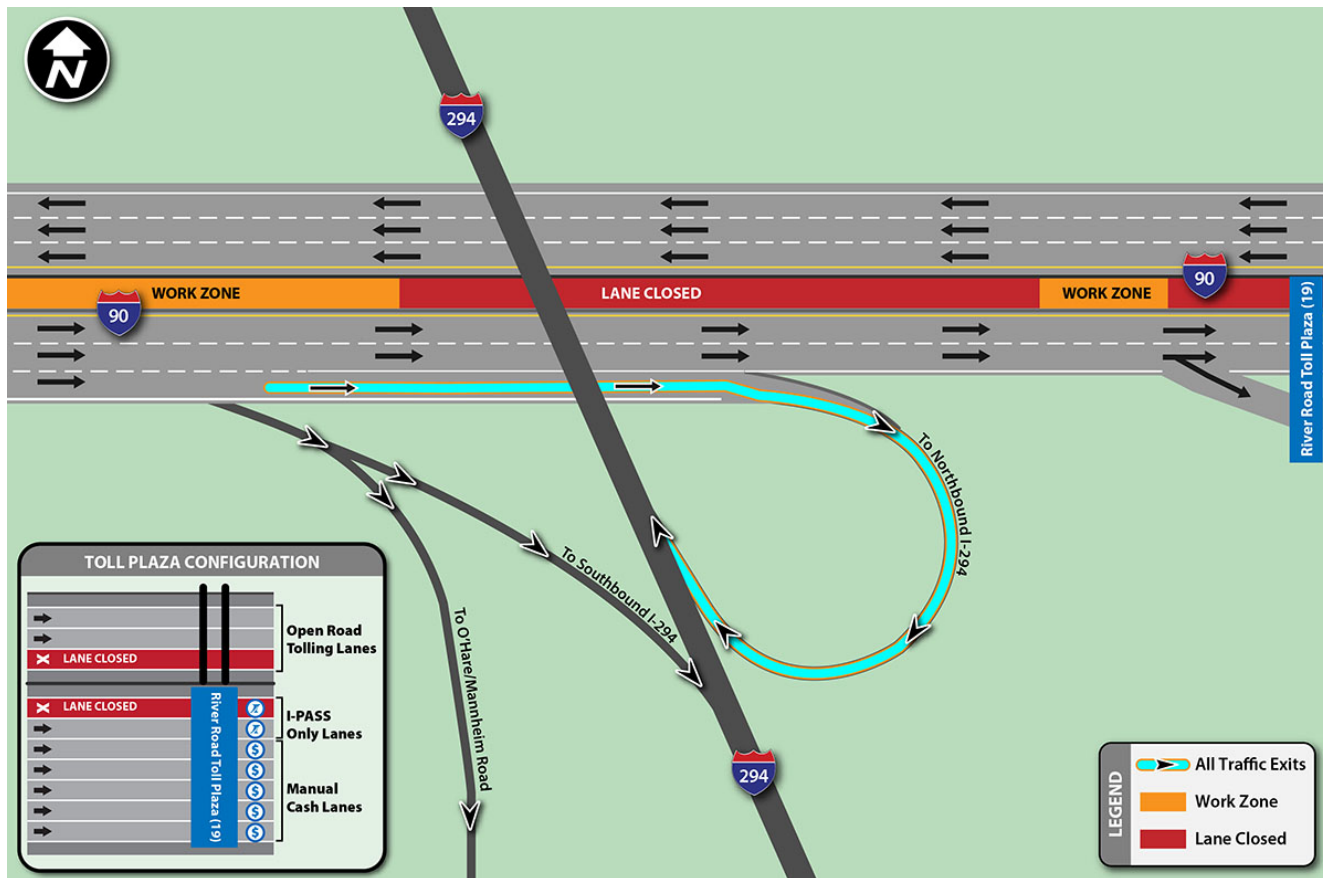
**Traffic Shifts to begin March 7**

Weather permitting, tonight, Monday, March 7, overnight lane closures will be scheduled on I-90 between 11 p.m. and 5 a.m. on Tuesday, March 8 to shift traffic. Eastbound I-90 traffic will be shifted to the right to provide a work zone on the left for the first phase of construction scheduled to be completed by the end of May.

During the first phase of construction, beginning at Higgins Road, three lanes of traffic will be shifted to the right. Near I-294, the far right lane will become a dedicated exit lane to the ramp carrying I-90 traffic to northbound I-294 and two eastbound lanes of traffic will continue through to the River Road Toll Plaza.

Drivers who mistakenly exit to northbound I-294 will be able to reroute to eastbound I-90 by continuing north on I-294, exiting to Touhy Avenue west and using northbound Des Plaines River Road to re-enter I-294 southbound to reach the exit ramp to eastbound I-90.

At the River Road Toll Plaza, traffic will be reduced to two open road tolling lanes during construction and on the cash side of the toll plaza various lanes will be closed to accommodate work, but there will always be one I-PASS or Pay Online lane and three manned toll collection lanes available.



The second phase of construction traffic shifts are currently scheduled to be in place from late May through the summer and will be needed to accommodate the reconstruction of roadway between Higgins Road (Illinois Route 72) and I-294. During this phase, three lanes of eastbound I-90 traffic will be split with two lanes on the left and one lane on the right with a work zone in the middle. Traffic in the far right lane will have access to exit at southbound I-294/O'Hare International Airport and to northbound I-294.

Work to reconstruct the eastbound lanes on I-90 is being done in coordination with local police and fire departments, as well as the Illinois Department of Transportation (IDOT). Work to rebuild the eastbound bridge over the Des Plaines River just east of the River Road Toll Plaza is being done this year to coordinate with IDOT's plans to rebuild the Cumberland Avenue flyover ramp.

The \$2.5 billion I-90 Rebuilding and Widening Project is funded by the Illinois Tollway's 15-year, \$12 billion capital program, *Move Illinois: The Illinois Tollway Driving the Future*.

### Work Zone Safety

A 45 mph work zone speed limit is in effect on I-90. Construction zone speed limits are in effect in all construction zones 24/7 and drivers should continue to watch for changing traffic patterns and use caution, especially when workers are present.

Illinois State Police have zero tolerance for drivers speeding in work zones. The minimum penalty for speeding in a work zone is \$375. Posted signs advise drivers of a \$10,000 fine and a 14-year jail sentence for hitting a roadway worker.

### **Illinois Tollway Keeps Drivers Informed**

The Tollway offers the following ways for drivers to get the latest travel information before they get on the road:

- [www.illinoistollway.com](http://www.illinoistollway.com) – Construction/Planning section, Tollway Trip Calculator, live roadway images and real-time roadway incident information
- 1-800-TOLL-FYI – Daily lane closure and travel information
- [www.travelmidwest.com](http://www.travelmidwest.com) – Real-time travel times
- [www.twitter.com](http://www.twitter.com) – Real-time roadway incident information at Tollway Trip 90, Tollway Trip 88, Tollway Trip 355 and Tollway Trip 94/294

### **About *Move Illinois***

The Illinois Tollway's 15-year, \$12 billion capital program, *Move Illinois: The Illinois Tollway Driving the Future*, will improve mobility, relieve congestion, reduce pollution, create as many as 120,000 jobs and link economies across the Midwest region. *Move Illinois* will address the remaining needs of the existing Tollway system; rebuild and widen the Jane Addams Memorial Tollway (I-90) as a state-of-the-art 21<sup>st</sup> century corridor; construct a new interchange to connect the Tri-State Tollway (I-294) to I-57; build a new, all-electronic Elgin O'Hare Western Access Project and fund planning studies for emerging projects.

### **About the Illinois Tollway**

The Illinois Tollway is a user-fee system that receives no state or federal funds for maintenance and operations. The agency maintains and operates 286 miles of interstate tollways in 12 counties in Northern Illinois, including the Reagan Memorial Tollway (I-88), the Veterans Memorial Tollway (I-355), the Jane Addams Memorial Tollway (I-90) and the Tri-State Tollway (I-94/I-294/I-80).

###