



FOR IMMEDIATE RELEASE
January 18, 2017

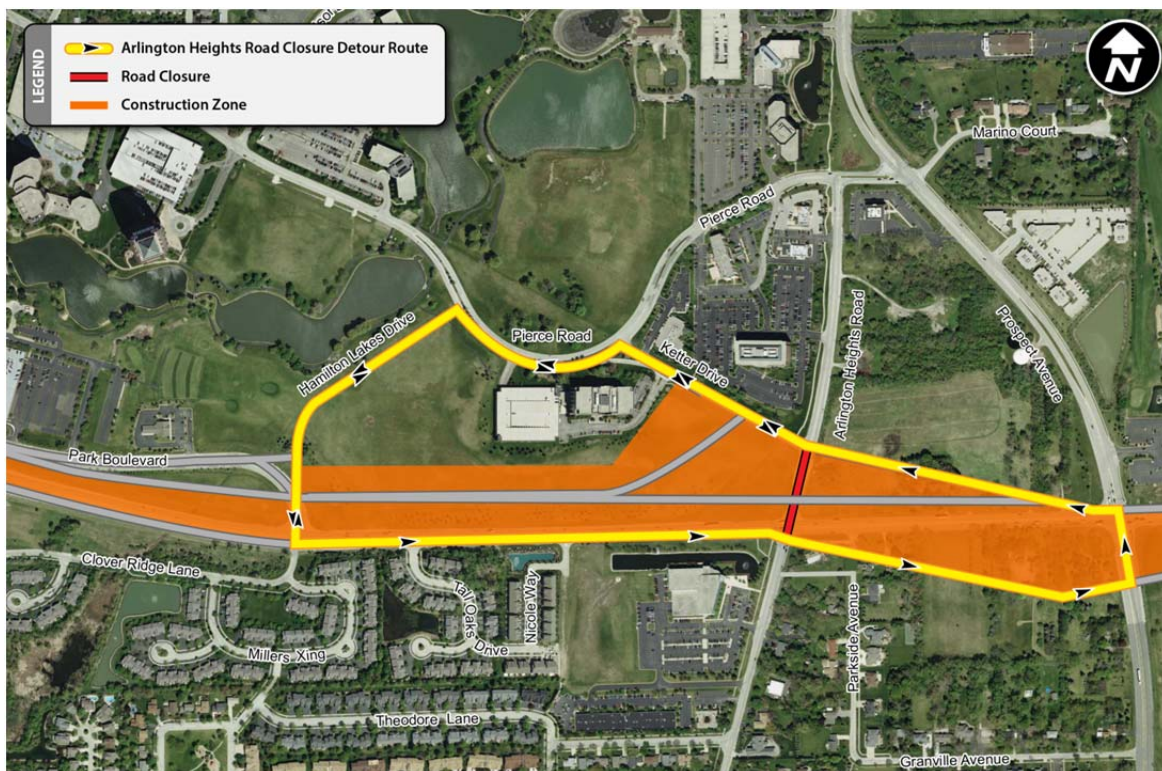
LANE CLOSURES AND DETOUR SCHEDULED THIS WEEKEND ON ARLINGTON HEIGHTS ROAD IN ITASCA FOR BRIDGE WORK

Lane closures planned for bridge beam installation as part of new Illinois Route 390 Tollway construction

DOWNERS GROVE, IL – Lane closures including a posted detour will be scheduled this weekend on Arlington Heights Road and Thorndale Avenue in Itasca for bridge beam installation as part of construction of new Illinois Route 390 Tollway over Arlington Heights Road.

Beam installation for the new Illinois Route 390 Tollway will be done during the weekend to minimize the impact on traffic. The roadway closure is necessary to provide a work zone that safely accommodates the construction of the bridge. Electronic message signs will be put in place in advance to alert drivers to the closures and the posted detour.

Weather permitting, on Saturday, January 21, Arlington Heights Road at Thorndale Avenue is scheduled to close from 6:30 a.m. to 8 p.m. for bridge beam placement. A detour will be posted directing traffic to use Prospect Avenue, Ketter Drive, Pierce Road and Hamilton Lakes Drive to access Arlington Heights Road.



In addition, on the eastbound Thorndale Avenue frontage road one lane between Hamilton Lakes Drive and Arlington Heights Road is scheduled to close from 6:30 a.m. to 8 p.m. on Saturday, January 21.

The Illinois Tollway is coordinating the roadway construction with the village of Itasca and the Illinois Department of Transportation.

In 2017, the Illinois Tollway is continuing construction to extend the Illinois Route 390 Tollway east between I-290 and Illinois Route 83 along the current Thorndale Avenue, including work to build new bridges and frontage roads to accommodate local traffic. This work is scheduled to be complete by the end of the year.

Construction information about the [Illinois Route 390 Tollway Project](#) is available under “Projects Overview” in the Explore Projects section on the Tollway’s website at [illinoistollway.com](#).

The public can follow the progress of the work on the Illinois Route 390 Tollway Project via camera images offering bird’s-eye-views on the Illinois Tollway’s website [illinoistollway.com](#). Views of ongoing work at the I-290 Interchange and Illinois Route 390 Tollway are updated every 15 minutes and available online.

Work Zone Safety

The Illinois Tollway is committed to ensuring that the Illinois Route 390 Tollway and other area roadways remain safe for both drivers and workers during construction, which is part of the agency’s overall commitment to roadway safety.

Construction zone speed limits are in effect in all construction zones 24/7 and drivers should continue to watch for changing traffic patterns and use caution, especially when workers are present. A 45 mph work zone speed limit is in effect for traffic using the frontage roads throughout construction. Work zone speed limits are in place on other roads in the project area as well.

Illinois State Police have zero tolerance for drivers speeding in work zones. The minimum penalty for speeding in a work zone is \$375. Posted signs advise drivers of a \$10,000 fine and a 14-year jail sentence for hitting a roadway worker.

Getting Tollway Construction Information

The Illinois Tollway has a variety of ways customers can get the latest travel information, including:

- [illinoistollway.com](#) – Construction/Planning section, Tollway Trip Calculator, live roadway images and real-time roadway incident information
- 1-800-TOLL-FYI – Daily lane closure information
- [travelmidwest.com](#) – Real-time travel times
- [twitter.com](#) – Real-time roadway incident information at Tollway Trip 90, Tollway Trip 88, Tollway Trip 355, Tollway Trip 94/294 and Tollway Trip 390.

Illinois Route 390 Project

The Illinois Route 390 Project scheduled to be complete by the end of 2017 is providing an improved roadway from Lake Street (U.S. Route 20) to I-290 and extending Illinois Route 390 east to Illinois Route 83 along the current Thorndale Avenue with bridges and frontage roads to accommodate local traffic. The new Illinois Route 390 from Lake Street (U.S. Route 20) to Illinois Route 83, including a new interchange at I-290, is estimated at \$780 million. In 2016, the Illinois Tollway opened the western segment of the Illinois Route 390 Tollway between Lake Street (U.S. Route 20) and I-290. These improvements are part of the \$3.4 billion Elgin O’Hare Western Access Project, which is included in the Illinois Tollway’s 15-year, \$12 billion capital program, *Move Illinois: The Illinois Tollway Driving the Future*.

About *Move Illinois*

The Illinois Tollway's 15-year, \$12 billion capital program, *Move Illinois: The Illinois Tollway Driving the Future*, will improve mobility, relieve congestion, reduce pollution, create as many as 120,000 jobs and link economies throughout the region. *Move Illinois* will address the remaining needs of the existing Tollway system; rebuild and widen the Jane Addams Memorial Tollway (I-90) as a state-of-the-art 21st century corridor; construct a new interchange to connect the Tri-State Tollway (I-294) to I-57; build a new, all-electronic Elgin O'Hare Western Access and fund planning studies for other emerging projects.

About the Illinois Tollway

The Illinois Tollway is a user-fee system that receives no state or federal funds for maintenance and operations. The agency maintains and operates 292 miles of roadways in 12 counties in Northern Illinois, including the Reagan Memorial Tollway (I-88), the Veterans Memorial Tollway (I-355), the Jane Addams Memorial Tollway (I-90), the Tri-State Tollway (I-94/I-294/I-80) and the Illinois Route 390 Tollway.

###