



FOR IMMEDIATE RELEASE
April 21, 2017

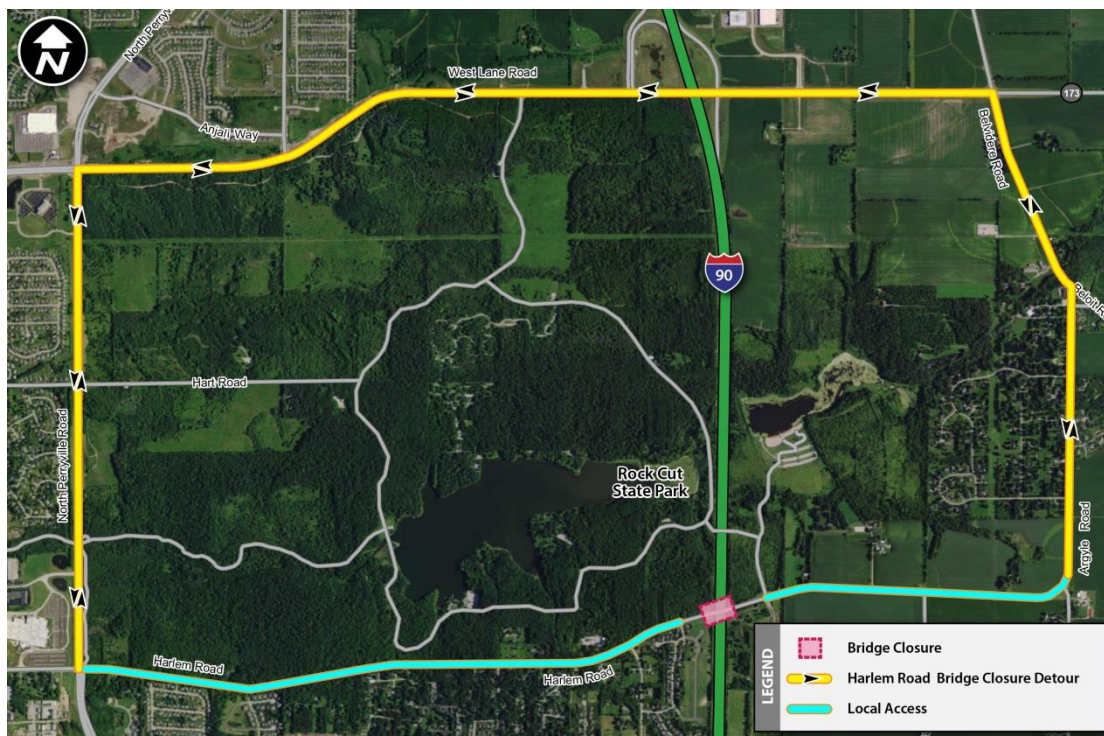
REPAIRS SCHEDULED TO BEGIN NEXT WEEK ON HARLEM ROAD BRIDGE OVER THE JANE ADDAMS MEMORIAL TOLLWAY (I-90) IN WINNEBAGO COUNTY

Bridge to close for two weeks with posted detour

DOWNERS GROVE, IL – The Harlem Road Bridge carrying local traffic over the Jane Addams Memorial Tollway (I-90) in Winnebago County is scheduled to close next week and traffic detoured to accommodate bridge maintenance and repairs. The bridge is scheduled to reopen to traffic in May and all repair work is scheduled to be complete this summer.

Electronic message signs and construction signage will be put in place in advance to alert drivers to the closure and posted detour throughout the repair work. Up to 3,900 vehicles use this bridge daily.

Weather permitting, on Tuesday, April 25, a two-week full closure of the Harlem Road Bridge is scheduled to begin at 9 a.m. During the bridge closure, posted detours will direct traffic to use Perryville Road, West Lane Road (Illinois Route 173), Belvidere Road and Argyle Road.



Bridges repairs scheduled for 2017 are necessary to maintain and extend the life of the bridges and to provide safe and convenient travel for Tollway customers. Maintenance and repairs on the Harlem Road Bridge will include deck repairs, as well as girder and substructure repairs, bridge joint replacement, concrete sealer and guardrail improvements.

Closure of the local crossroad bridge is necessary because the bridge structure is not wide enough to maintain traffic and provide a work zone. In addition to providing a safe work zone for construction workers and drivers, closure of the bridge will allow work to be complete in half the time.

Construction and detours are being coordinated with the Illinois Department of Transportation and Winnebago County, along with local school districts and police and fire departments.

The Harlem Road Bridge is among five local crossroad bridges scheduled to be repaired along I-90 in Winnebago County in 2017. Local crossroad bridges being repaired in 2017 also include Rock Cut State Park Road, Belvidere Road Rockton Road and Spring Creek Road Bridge.

The work is funded by the Illinois Tollway's 15-year, \$12 billion capital program, *Move Illinois: The Illinois Tollway Driving the Future*.

Construction information about the Local Crossroad Bridge and the I-90 Bridge and Ramp Repairs Projects is available in the "Projects by Roadway" section in the Explore Projects section on the Tollway's website at illinoistollway.com.

Work Zone Safety

The Illinois Tollway is committed to ensuring that the Jane Addams Memorial Tollway (I-90) remains safe for both drivers and workers during construction, which is part of the agency's overall commitment to roadway safety.

Construction zone speed limits are in effect in all construction zones 24/7 and drivers should continue to watch for changing traffic patterns and use caution, especially when workers are present. On I-90 a 65 mph work zone speed limit is in effect throughout the construction season.

Illinois State Police have zero tolerance for drivers speeding in work zones. The minimum penalty for speeding in a work zone is \$375. Posted signs advise drivers of a \$10,000 fine and a 14-year jail sentence for hitting a roadway worker.

Getting Tollway Construction Information

The Illinois Tollway has a variety of ways customers can get the latest travel information, including:

- illinoistollway.com – Explore Projects section, Tollway Trip Calculator, live roadway images and real-time roadway incident information
- 1-800-TOLL-FYI – Daily lane closure information
- travelmidwest.com – Real-time travel times
- twitter.com – Real-time roadway incident information at Tollway Trip 90, Tollway Trip 88, Tollway Trip 355, Tollway Trip 94/294 and Tollway Trip 390.

About Move Illinois

The Illinois Tollway's 15-year, \$12 billion capital program, *Move Illinois: The Illinois Tollway Driving the Future*, is improving mobility, relieving congestion, reducing pollution, creating as many as 120,000 jobs and linking economies throughout the region. The first five years of *Move Illinois* is on schedule and within budget, delivering the rebuilt and widened Jane Addams Memorial Tollway (I-90) as a state-of-the-art 21st century corridor and opening a new interchange connecting the Tri-State Tollway (I-294) to I-57. Progress continues on projects addressing the remaining needs of the existing Tollway system, delivering the Elgin O'Hare Western Access Project and planning for emerging projects, including reconstruction of the Central Tri-State Tollway (I-294).

About the Illinois Tollway

The Illinois Tollway is a user-fee system that receives no state or federal funds for maintenance and operations. The agency maintains and operates 292 miles of roadways in 12 counties in Northern Illinois, including the Reagan Memorial Tollway (I-88), the Veterans Memorial Tollway (I-355), the Jane Addams Memorial Tollway (I-90), the Tri-State Tollway (I-94/I-294/I-80) and the Illinois Route 390 Tollway.

#