



**FOR IMMEDIATE RELEASE**  
**May 2, 2017**

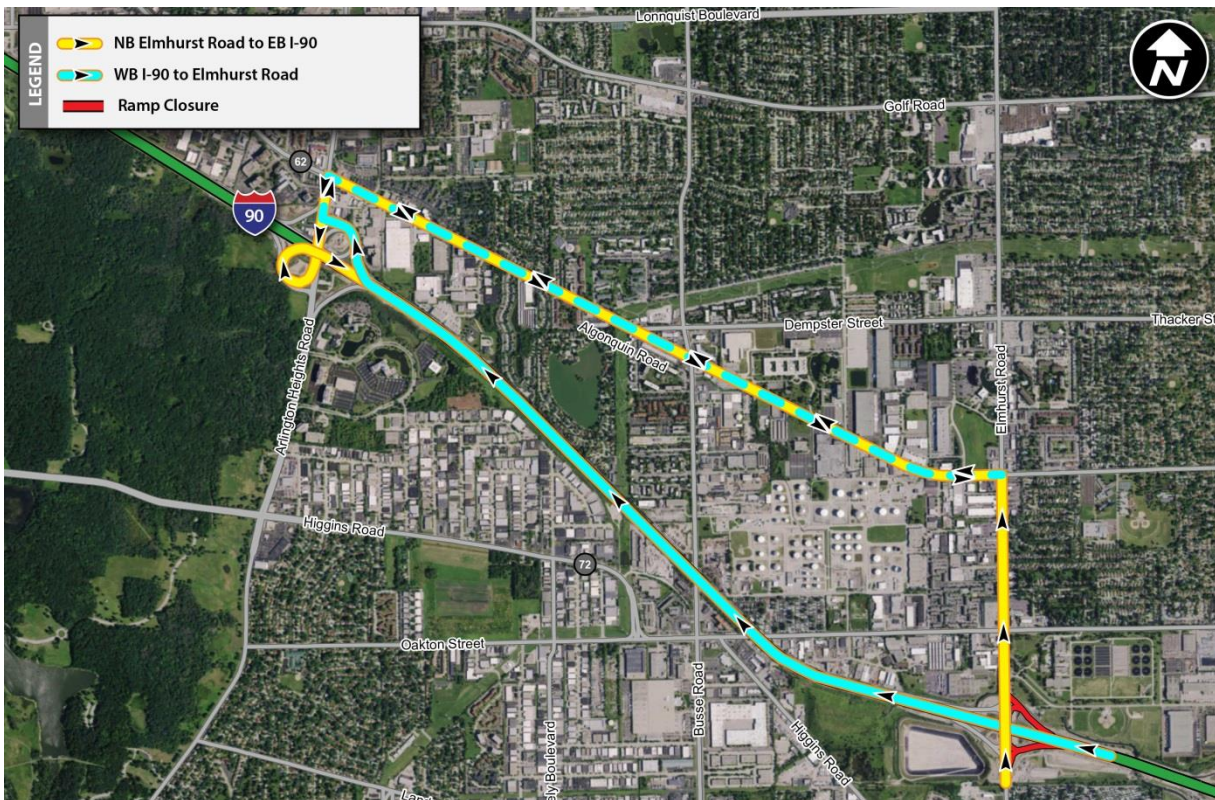
## **RAMP CLOSURES SCHEDULED FOR WORK TO OPEN THE NEW DIVERGING DIAMOND INTERCHANGE AT ELMHURST ROAD ON THE JANE ADDAMS MEMORIAL TOLLWAY (I-90)**

*Closures, detours scheduled to last through June*

**DOWNERS GROVE, IL** – Ramp closures with posted detours are scheduled to begin next week and continue through June at the Elmhurst Road Interchange on the Jane Addams Memorial Tollway (I-90) for construction work needed to open new ramps and shift traffic into the new diverging diamond interchange configuration.

Electronic message signs are in place in advance to alert drivers to the upcoming closures and construction signage will be posted to advise drivers when the detours are put in place.

Weather permitting in advance of the Monday morning commute on May 8, ramp closures will be put in place and a detour will be posted directing traffic to use the Arlington Road Interchange to access I-90. Elmhurst Road will remain open with one lane of traffic in both directions during the ramp closures.



The full closure of the ramps carrying traffic to and from the east on I-90 is necessary to provide a work zone and safely accommodate the completion of construction activities needed to open the new interchange.

Work over the next two months will include completion of pavement, roadway medians and barrier walls, pavement striping and installation of traffic signals and lighting.

After this work is complete, traffic crossing I-90 on the Elmhurst Road Bridge will be shifted into the new diverging diamond configuration, with drivers traveling in both directions separated by concrete barriers and guided through signalized intersections onto the opposite sides of the bridge.

Once Elmhurst Road traffic is shifted into the final configuration and traffic signal testing is complete, the existing ramps will reopen along with new ramps carrying traffic to and from the west to provide a full-access interchange.

When all ramps are open, the new diverging diamond interchange configuration will eliminate left turns in front of oncoming traffic and right turns will be controlled by traffic signals to smooth traffic flow and reduce congestion.

The new ramps carrying traffic to and from the west will have cashless tolling with I-PASS or Pay Online lanes. Cars with I-PASS will pay 55 cents and the cash rate is \$1.10 for cars. For trucks tolls will range from \$1.70 to \$4.50 during daytime hours, with overnight discounts offered. Those without I-PASS can pay their tolls online at the cash rate within the seven-day grace period.

After the full interchange opens, remaining local road improvements include completion of work at the Oakton intersection this summer and reconstruction of Elmhurst Road pavement south of the interchange scheduled to be complete in late fall.

Work on the Elmhurst Road Interchange project, along with ramp closures and detours are being coordinated with the Elk Grove Village, the City of Des Plaines, the Village of Mount Prospect, Cook County and the Illinois Department of Transportation, along with local police and fire departments.

The \$54 million Elmhurst Road Interchange Project is delivering a new diverging diamond interchange with new ramps providing full access in all directions between I-90 and Elmhurst Road. The project is funded by the Illinois Tollway's *Move Illinois* Program, also included construction of two new bridge structures to carry southbound and northbound Elmhurst Road traffic over I-90 with a shared-use path for pedestrians and bicyclists in the median of the northbound bridge, as well as local road improvements.

Information about the [Elmhurst Road Interchange Project](#) is available in the "Projects by Roadway" section in the Explore Projects section on the Tollway's website at [Illinoistollway.com](http://Illinoistollway.com).

### **Work Zone Safety**

The Illinois Tollway is committed to ensuring that the Jane Addams Memorial Tollway (I-90) and Elmhurst Road remain safe for both drivers and workers during construction, which is part of the agency's overall commitment to roadway safety.

Construction zone speed limits are in effect in all construction zones 24/7 and drivers should continue to watch for changing traffic patterns and use caution, especially when workers are present. A 30 mph work zone is in place in the construction zones on Elmhurst Road.

Illinois State Police have zero tolerance for drivers speeding in work zones. The minimum penalty for speeding in a work zone is \$375. Posted signs advise drivers of a \$10,000 fine and a 14-year jail sentence for hitting a roadway worker.

### **Getting Tollway Construction Information**

The Illinois Tollway has a variety of ways customers can get the latest travel information, including:

- [illinoistollway.com](http://illinoistollway.com) – Explore Projects section, Tollway Trip Calculator, live roadway images and real-time roadway incident information
- 1-800-TOLL-FYI – Daily lane closure information
- [travelmidwest.com](http://travelmidwest.com) – Real-time travel times
- [twitter.com](https://twitter.com) – Real-time roadway information at Tollway Trip 90, Tollway Trip 88, Tollway Trip 355, Tollway Trip 94/294 and Tollway Trip 390.

#### **About Move Illinois**

The Illinois Tollway's 15-year, \$14 billion capital program, *Move Illinois: The Illinois Tollway Driving the Future*, is improving mobility, relieving congestion, reducing pollution, creating as many as 120,000 jobs and linking economies throughout the region. The first five years of *Move Illinois* is on schedule and within budget, delivering the rebuilt and widened Jane Addams Memorial Tollway (I-90) as a state-of-the-art 21<sup>st</sup> century corridor and opening a new interchange connecting the Tri-State Tollway (I-294) to I-57. Progress continues on projects addressing the remaining needs of the existing Tollway system, delivering the Elgin O'Hare Western Access Project and planning for emerging projects, including reconstruction of the Central Tri-State Tollway (I-294).

#### **About the Illinois Tollway**

The Illinois Tollway is a user-fee system that receives no state or federal funds for maintenance and operations. The agency maintains and operates 292 miles of roadways in 12 counties in Northern Illinois, including the Reagan Memorial Tollway (I-88), the Veterans Memorial Tollway (I-355), the Jane Addams Memorial Tollway (I-90), the Tri-State Tollway (I-94/I-294/I-80) and the Illinois Route 390 Tollway.

###