



FOR IMMEDIATE RELEASE
May 5, 2017

BRIDGE AND RAMP REPAIRS SCHEDULED TO BEGIN NEXT WEEK ON JANE ADDAMS MEMORIAL TOLLWAY (I-90) IN WINNEBAGO COUNTY

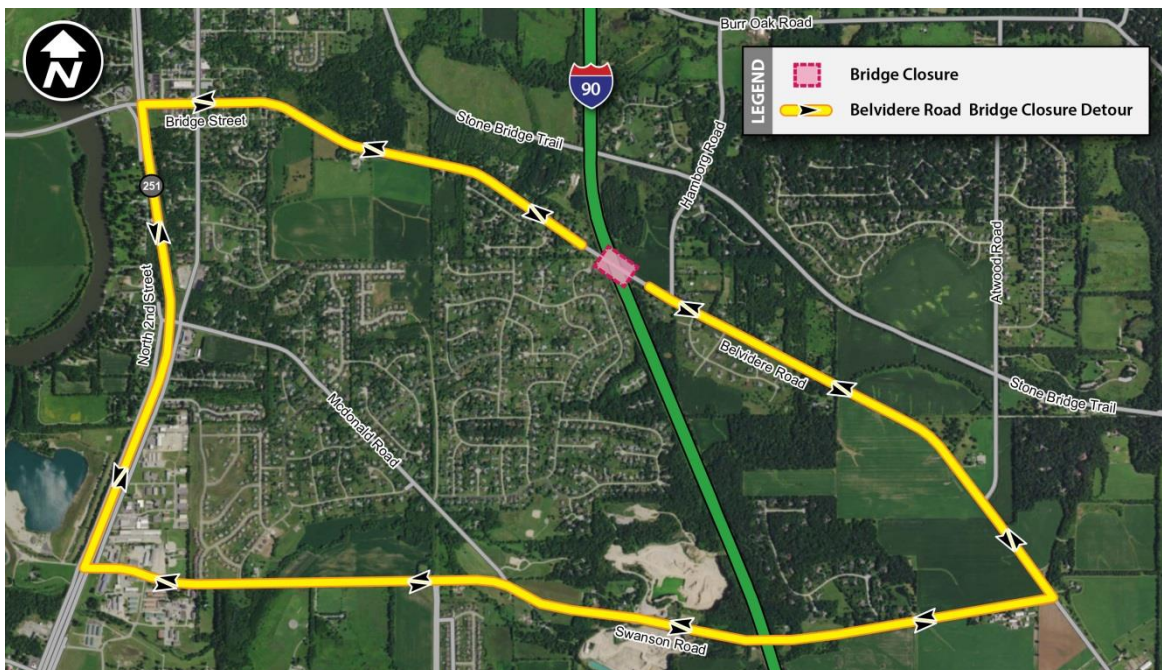
*Belvidere Road Bridge to close through May with posted detour;
traffic shifts begin for ramp work Rockton Road Interchange*

DOWNERS GROVE, IL – The Belvidere Road Bridge carrying local traffic over the Jane Addams Memorial Tollway (I-90) in Winnebago County is scheduled to close next week with a posted detour to accommodate bridge maintenance. Repair work is also scheduled to begin next week on ramps at the Rockton Road Interchange.

Electronic message signs and construction signage will be put in place in advance to alert drivers to the bridge closure and posted detour as well as traffic shifts throughout the repair work.

Belvidere Road Bridge

Weather permitting, on Wednesday, May 10, the Belvidere Road Bridge is scheduled to close to traffic beginning at 7 p.m. and a detour will be posted. The detour will direct traffic to use Swanson Road and Illinois Route 251. Up to 3,300 vehicles use this bridge daily.



The bridge is scheduled to reopen by Memorial Day for holiday travel and a second closure, lasting about four days, will be scheduled in June to complete the work.

Closure of the local crossroad bridge is necessary because the bridge structure is not wide enough to maintain traffic and provide a work zone. In addition to providing a safe work zone for construction workers and drivers, closure of the bridge will allow work to be complete in half the time.

Maintenance and repairs on the Belvidere Road Bridge will include deck repairs, as well as girder and substructure repairs, bridge joint replacement, concrete sealer and guardrail improvements.

Rockton Road Interchange

Weather permitting, ramp pavement and shoulder repairs are scheduled to begin on Monday, May 8, at 6:30 a.m. on two ramps at the Rockton Road Interchange in Roscoe — the ramps connecting Rockton Road to eastbound I-90 and westbound I-90 to Rockton Road.

The ramps will remain open during construction, however lane closures and traffic shifts will be put in place until work is completed this summer. Construction will begin on the left side of the ramp, with those lanes scheduled to reopen by Memorial Day weekend. After the holiday, work will resume to complete repairs on the right side of the ramps.

Up to 2,750 vehicles use the Rockton Road to eastbound I-90 ramp daily and up to 2,500 vehicles use the westbound I-90 to Rockton Road ramp.

In 2017, the Illinois Tollway is repairing interchange ramps at Rockton Road and East Riverside Boulevard near Rockford, as well as three mainline bridges over Burr Oak Road, Stone Bridge Trail and Illinois Route 173. In addition, local crossroad bridges being repaired in 2017 include Harlem Road, Rock Cut State Park Road, Belvidere Road, Rockton Road and Spring Creek Road bridges. All bridge and ramp repair work is scheduled to be complete this summer.

Construction and detours are being coordinated with the Illinois Department of Transportation and Winnebago County, along with local school districts and police and fire departments.

Bridges and ramp repairs scheduled for 2017 on I-90 are necessary to maintain and extend the life of the bridges and ramps and to provide safe and convenient travel for Tollway customers. The work is funded by the Illinois Tollway's 15-year, \$12 billion capital program, *Move Illinois: The Illinois Tollway Driving the Future*.

Construction information about the [Local Crossroad Bridge](#) and the [I-90 Bridge and Ramp Repairs](#) Projects is available in the "[Projects by Roadway](#)" section in the Explore Projects section on the Tollway's website at illinoistollway.com.

Work Zone Safety

The Illinois Tollway is committed to ensuring that the Jane Addams Memorial Tollway (I-90) remains safe for both drivers and workers during construction, which is part of the agency's overall commitment to roadway safety.

Construction zone speed limits are in effect in all construction zones 24/7 and drivers should continue to watch for changing traffic patterns and use caution, especially when workers are present. On I-90 a 65 mph work zone speed limit is in effect throughout the construction season.

Illinois State Police have zero tolerance for drivers speeding in work zones. The minimum penalty for speeding in a work zone is \$375. Posted signs advise drivers of a \$10,000 fine and a 14-year jail sentence for hitting a roadway worker.

Getting Tollway Construction Information

The Illinois Tollway has a variety of ways customers can get the latest travel information, including:

- illinoistollway.com – Explore Projects section, Tollway Trip Calculator, live roadway images and real-time roadway incident information
- 1-800-TOLL-FYI – Daily lane closure information
- travelmidwest.com – Real-time travel times
- twitter.com – Real-time roadway incident information at Tollway Trip 90, Tollway Trip 88, Tollway Trip 355, Tollway Trip 94/294 and Tollway Trip 390.

About *Move Illinois*

The Illinois Tollway's 15-year, \$14 billion capital program, *Move Illinois: The Illinois Tollway Driving the Future*, is improving mobility, relieving congestion, reducing pollution, creating as many as 120,000 jobs and linking economies throughout the region. The first five years of *Move Illinois* is on schedule and within budget, delivering the rebuilt and widened Jane Addams Memorial Tollway (I-90) as a state-of-the-art 21st century corridor and opening a new interchange connecting the Tri-State Tollway (I-294) to I-57. Progress continues on projects addressing the remaining needs of the existing Tollway system, delivering the Elgin O'Hare Western Access Project and planning for emerging projects, including reconstruction of the Central Tri-State Tollway (I-294).

About the Illinois Tollway

The Illinois Tollway is a user-fee system that receives no state or federal funds for maintenance and operations. The agency maintains and operates 292 miles of roadways in 12 counties in Northern Illinois, including the Reagan Memorial Tollway (I-88), the Veterans Memorial Tollway (I-355), the Jane Addams Memorial Tollway (I-90), the Tri-State Tollway (I-94/I-294/I-80) and the Illinois Route 390 Tollway.

#