



**FOR IMMEDIATE RELEASE**  
**August 4, 2017**

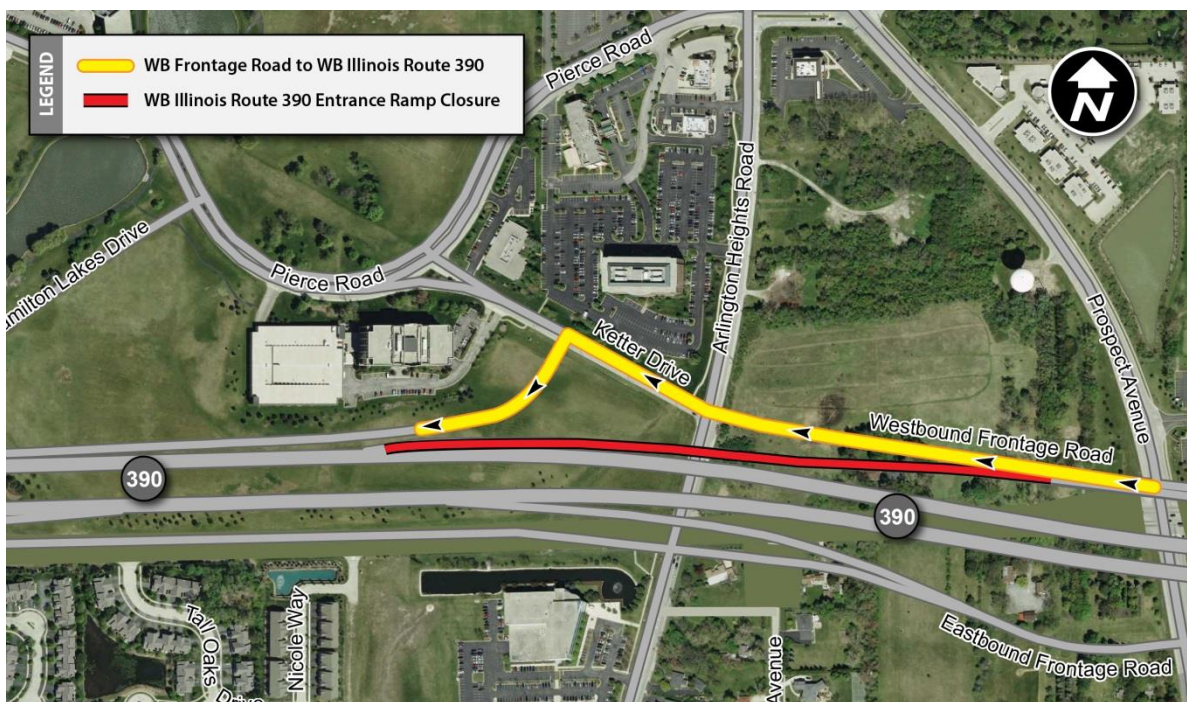
## **CLOSURES, DETOURS SCHEDULED NEXT WEEK ON ILLINOIS ROUTE 390 FOR WORK ON TOLLWAY EASTERN SEGMENT**

*Electrical work underway to construct toll plazas for new roadway*

**DOWNERS GROVE, IL** – Overnight roadway and ramp closures on Illinois Route 390 with posted detours are scheduled next week to complete electrical work at the new toll plazas as part of the new Illinois Route 390 Tollway Project. Electronic message signs will be put in place to alert drivers in advance to closures and detours.

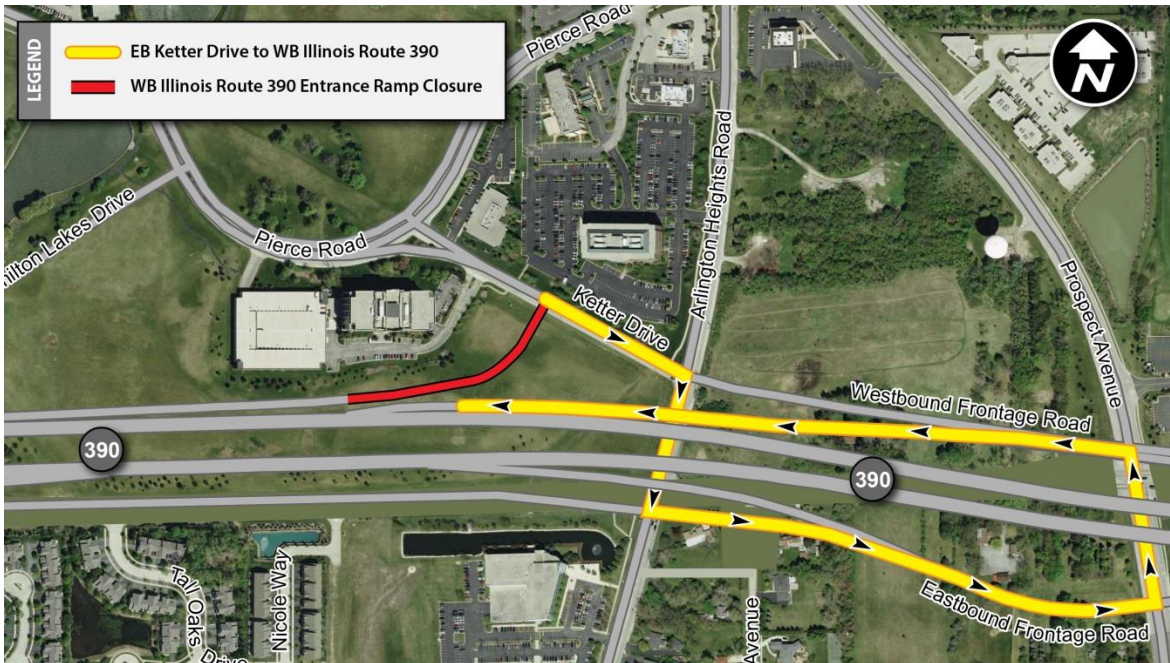
Construction is scheduled during overnight hours to minimize the impact on traffic. The temporary closures are necessary to provide a work zone and safely accommodate construction.

Weather permitting, on Wednesday, August 9, beginning at 6 p.m., one westbound lane on Illinois Route 390 is scheduled to close between Prospect Avenue and Park Boulevard for electrical work for construction of a cashless toll plaza on the new Tollway. Full closure of all westbound lanes is scheduled to begin at 11 p.m. A detour will be posted directing traffic to use Ketter Drive to access Illinois Route 390. All lanes are scheduled to reopen by 5 a.m. on Thursday, August 10, before the morning commute.



On Thursday, August 10, beginning at 6 p.m., the left side of the ramp carrying Ketter Drive traffic to the westbound Illinois Route 390 Tollway will close for electrical work for construction of a cashless toll plaza on the ramp. A full ramp closure is scheduled to begin at 11 p.m. A detour will be posted directing traffic to Arlington Heights Road and onto the eastbound frontage road, then to exit at Prospect Avenue

before heading westbound on Illinois Route 390. The ramp is scheduled to reopen by 5 a.m. on Friday, August 11.



No tolls will be collected until construction of the new tollway between I-290 and Illinois Route 83 is complete this fall.

The Illinois Route 390 Tollway is the first all-electronic roadway on the Illinois Tollway system. Cashless tolling is currently in place along the Illinois Route 390 Tollway from Lake Street to I-290. Cashless tolling means no coin baskets or toll booths along the roadway – cash is not accepted. All-electronic tolling provides for a safer, more efficient, and seamless method of collecting tolls from customers.

Altogether, all-electronic tolling gantries will be installed at six locations along the Illinois Route 390 Tollway and on the Ketter Drive entrance ramp. Toll collection points located closer together will reduce the cost of shorter trips and ensure that the rate paid for shorter trips is as fair and equitable as the rate paid by the driver traveling the entire length of the roadway. Tolling began on the western segment of the Illinois Route 390 Tollway between U.S. Route 20 and I-290 in July 2016.

### **Work Zone Safety**

The Illinois Tollway is committed to ensuring that the Illinois Route 390 Tollway and other area roadways remain safe for both drivers and workers during construction, which is part of the agency's overall commitment to roadway safety.

Construction zone speed limits are in effect in all construction zones 24/7 and drivers should continue to watch for changing traffic patterns and use caution, especially when workers are present. A 45 mph work zone speed limit is in effect for traffic using the frontage roads throughout construction. Work zone speed limits are in place on other roads in the project area as well.

Illinois State Police have zero tolerance for drivers speeding in work zones. The minimum penalty for speeding in a work zone is \$375. Posted signs advise drivers of a \$10,000 fine and a 14-year jail sentence for hitting a roadway worker.

### **Getting Tollway Construction Information**

The Illinois Tollway has a variety of ways customers can get the latest travel information, including:

- [illinoistollway.com](http://illinoistollway.com) – Construction/Planning section, Tollway Trip Calculator, live roadway images and real-time roadway incident information
- 1-800-TOLL-FYI – Daily lane closure information
- [travelmidwest.com](http://travelmidwest.com) – Real-time travel times
- [twitter.com](https://twitter.com) – Real-time roadway incident information at Tollway Trip 90, Tollway Trip 88, Tollway Trip 355, Tollway Trip 94/294 and Tollway Trip 390.

### **Illinois Route 390 Project**

The Illinois Route 390 Project scheduled to be complete by the end of 2017 is providing an improved roadway from Lake Street (U.S. Route 20) to I-290 and extending Illinois Route 390 east to Illinois Route 83 along the current Thorndale Avenue with bridges and frontage roads to accommodate local traffic. The new Illinois Route 390 from Lake Street (U.S. Route 20) to Illinois Route 83, including a new interchange at I-290, is estimated at \$780 million. In 2016, the Illinois Tollway opened the western segment of the Illinois Route 390 Tollway between Lake Street (U.S. Route 20) and I-290. These improvements are part of the \$3.4 billion Elgin O'Hare Western Access Project, which is included in the Illinois Tollway's 15-year, \$14 billion capital program, *Move Illinois: The Illinois Tollway Driving the Future*.

### **About Move Illinois**

The Illinois Tollway's 15-year, \$14 billion capital program, *Move Illinois: The Illinois Tollway Driving the Future*, is improving mobility, relieving congestion, reducing pollution, creating as many as 120,000 jobs and linking economies throughout the region. The first five years of *Move Illinois* is on schedule and within budget, delivering the rebuilt and widened Jane Addams Memorial Tollway (I-90) as a state-of-the-art 21<sup>st</sup> century corridor and opening a new interchange connecting the Tri-State Tollway (I-294) to I-57. Progress continues on projects addressing the remaining needs of the existing Tollway system, delivering the Elgin O'Hare Western Access Project and planning for emerging projects, including reconstruction of the Central Tri-State Tollway (I-294).

### **About the Illinois Tollway**

The Illinois Tollway is a user-fee system that receives no state or federal funds for maintenance and operations. The agency maintains and operates 292 miles of roadways in 12 counties in Northern Illinois, including the Reagan Memorial Tollway (I-88), the Veterans Memorial Tollway (I-355), the Jane Addams Memorial Tollway (I-90), the Tri-State Tollway (I-94/I-294/I-80) and the Illinois Route 390 Tollway.

###