



*Move Illinois:
The Illinois Tollway Driving the Future*

NEWS

FOR IMMEDIATE RELEASE
August 28, 2017

ILLINOIS TOLLWAY SCHEDULED TO OPEN NEW RAMP AT BARRINGTON ROAD INTERCHANGE ON JANE ADDAMS MEMORIAL TOLLWAY (I-90) THIS WEEK

New, eastbound exit provides for full-access interchange in Hoffman Estates

DOWNERS GROVE, IL – The new exit ramp connecting the eastbound Jane Addams Memorial Tollway (I-90) to Barrington Road is scheduled to open this week in Hoffman Estates, delivering full access to the \$68 million interchange built in partnership with the Illinois Department of Transportation (IDOT) and the Village of Hoffman Estates.

The new ramp is scheduled to open in the afternoon on Thursday, August 31. In addition, toll collection is scheduled to begin the same day with cashless tolling with I-PASS on the new eastbound exit ramp, as well as cashless tolling and automatic coin machines on the existing entrance ramp to eastbound I-90.

The Barrington Road Interchange Project took the existing partial interchange – which previously only provided access to and from the east – and rebuilt it into a full-access interchange featuring a four-way signalized intersection to improve traffic flow on Barrington Road. Work is scheduled to continue through the fall to complete remaining work along Barrington Road.

The Tollway is also continuing to work in partnership with Pace to complete construction of the new Barrington Road Station to integrate transit on I-90 later this year. Currently, the interchange serves as many as 20,000 vehicles daily.

“By working together to deliver new access to and from the Tollway and better traffic flow on Barrington Road, this project is great example of what state and local governments can accomplish by working together to advance transportation projects with regional benefits,” said Illinois Tollway Executive Director Greg Bedalov. “We’re providing our Tollway customers with better service and new options and giving Hoffman Estates the ability to promote economic development along Barrington Road and beyond.”

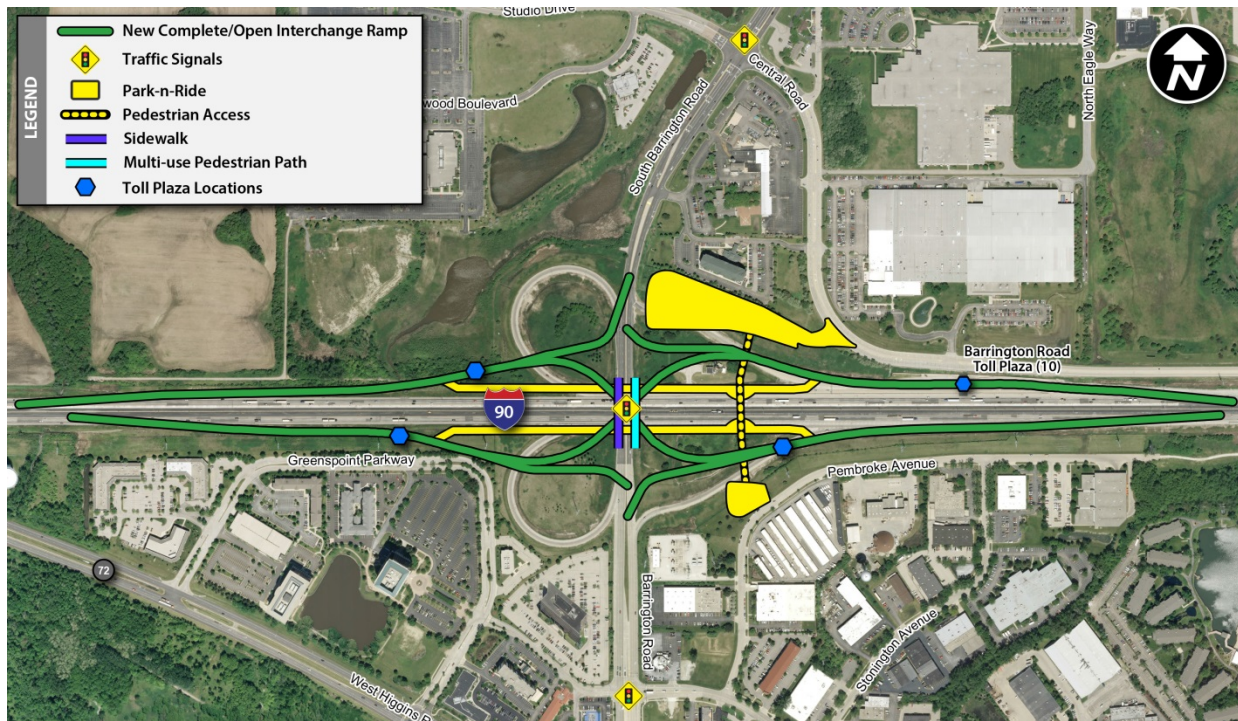
The Barrington Road Interchange Project was funded in part by the Tollway's 15-year, \$14 billion capital program, *Move Illinois: The Illinois Tollway Driving the Future*, and included funding from IDOT and Hoffman Estates consistent with the Tollway's Interchange and Roadway Cost Sharing Policy requiring local communities to fund half of the cost of interchange improvements. In addition, Alexian Brothers Health System, one of the strongest supporters of the full interchange due to the improved access it provides to nearby St. Alexius Hospital, contributed \$1 million to help fund the village's share.

In addition to the construction of new access, the Barrington Road Interchange was redesigned to improve traffic flow. The new design required less space and provides efficient traffic flow by allowing concurrent left turns for greater capacity. All traffic crossing I-90 on Barrington Road and traffic entering or exiting I-90 is controlled from a single set of traffic signals on the bridge. The new traffic pattern was chosen because of its ability to move large volumes of traffic through limited amounts of space safely and efficiently.

To fund the Tollway's share of the improvements ramp toll collection equipment is in place to provide cashless tolling with I-PASS on the ramps carrying traffic to and from the west. Toll plazas on the ramps carrying traffic to and from the east include I-PASS, as well as automatic coin machines. Cars with I-PASS will pay 45 cents and the cash rate is 90 cents for cars. Trucks tolls will range from \$1.50 to \$4.00 during daytime hours, with overnight discounts offered. Those without I-PASS can pay their tolls online at the cash rate within the seven-day grace period.

Pace is leading the design and construction of the new Barrington Road Station in coordination with the Tollway's commitment to integrate transit on I-90 for the first time in agency history. As part of the I-90 Rebuilding and Widening Project, the Illinois Tollway invested \$240 million to integrate transit into the corridor today through the use of new Flex Lanes for Pace Bus service, as well as accommodate future transit expansion plans.

The new Pace Barrington Road Station scheduled to open in December will feature the region's first bus-only ramps within I-90 to provide passenger drop-off service, as well as a 170-space parking lot for the Park-n-Ride station on the north side of I-90. In addition, a Pace Kiss-n-Ride location on the south side of the Tollway is scheduled to be complete in 2018. The station will include two pedestrian underpasses, as well as the 250-foot-long pedestrian bridge over I-90. Though the bridge is now complete, pedestrian access will not be allowed until Pace finishes construction of the Park-n-Ride station.



About Move Illinois

The Illinois Tollway's 15-year, \$14 billion capital program, *Move Illinois: The Illinois Tollway Driving the Future*, is improving mobility, relieving congestion, reducing pollution, creating as many as 120,000 jobs and linking economies throughout the region. The first five years of *Move Illinois* is on schedule and within budget, delivering the rebuilt and widened Jane Addams Memorial Tollway (I-90) as a state-of-the-art 21st century corridor and opening a new interchange connecting the Tri-State Tollway (I-294) to I-57. Progress continues on projects addressing the remaining needs of the existing Tollway system, delivering the Elgin O'Hare Western Access Project and planning for emerging projects, including reconstruction of the Central Tri-State Tollway (I-294).

About the Illinois Tollway

The Illinois Tollway is a user-fee system that receives no state or federal funds for maintenance and operations. The agency maintains and operates 292 miles of roadways in 12 counties in Northern Illinois, including the Reagan Memorial Tollway (I-88), the Veterans Memorial Tollway (I-355), the Jane Addams Memorial Tollway (I-90), the Tri-State Tollway (I-94/I-294/I-80) and the Illinois Route 390 Tollway.

#