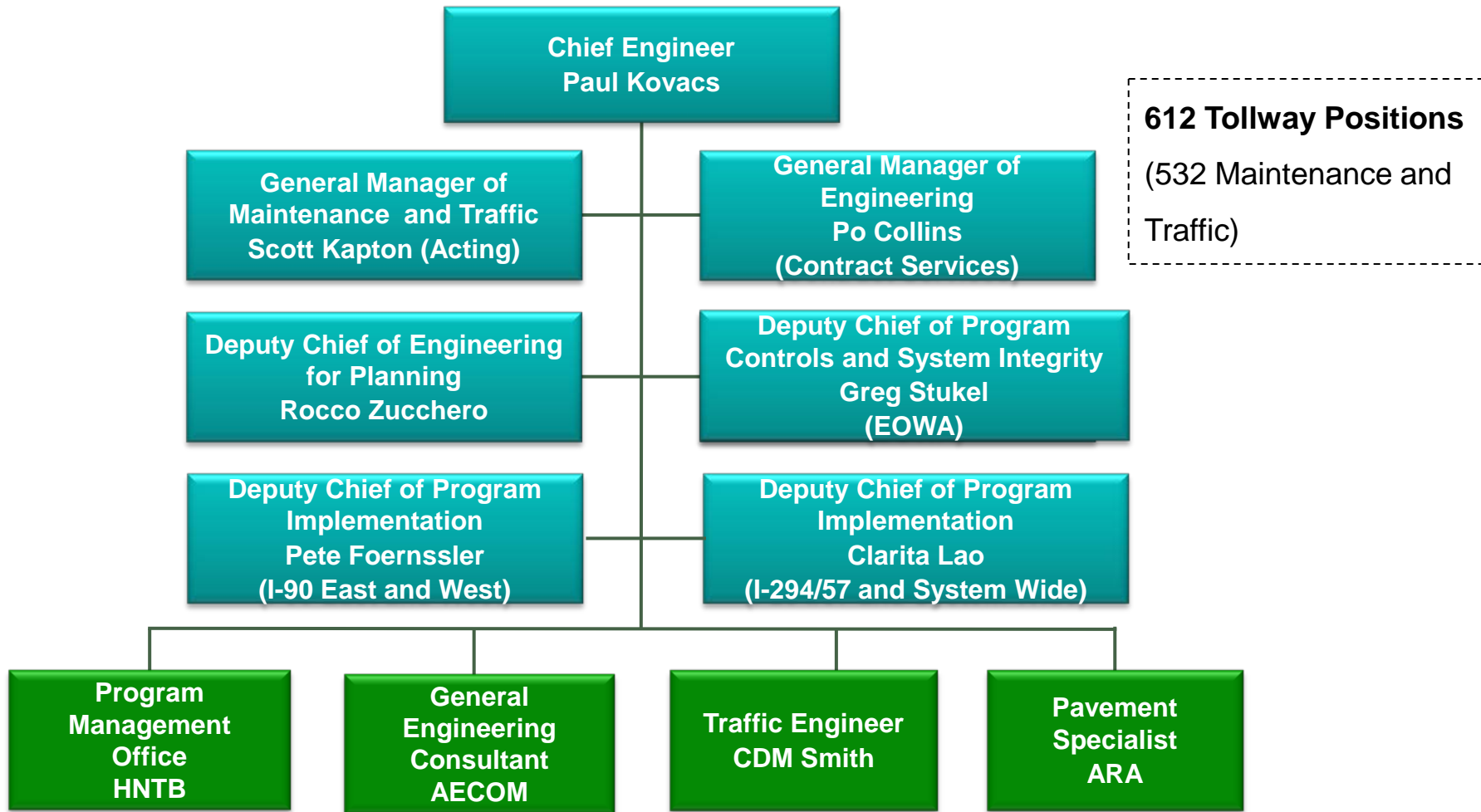




**Engineering Department
Overview**

Engineering Department Organization



Key Department Functions and Roles

- Maintenance and Operations of 286-mile Tollway system across 12 counties in Northern Illinois 24/7/365 (including roadway maintenance and operations of fleet, 24 hour dispatch, incident management, TIMS, HELP trucks, management of fiber optic utility, processing of permits, etc.)
- Planning, design, and construction related to capital program improvements
- Procurement and contract services related to professional services and construction contracts
- Annual inspections of infrastructure and facilities (roadway, bridges, buildings, maintenance yards, retaining and noise walls and sign trusses)
- Outreach and coordination
- Utility permits, land acquisitions, intergovernmental agreements, memorandums of understanding



Key Consultant Roles (Foundation Consultants)

■ General Engineer Consultant (GEC) – a Trust Indenture consultant

- Provides Trust Indenture services, including annual inspection/report on the condition of infrastructure and facilities
- Provides technical engineering services such as review of contract documents and construction field audits
- Development of technical standards and criteria, in addition to technical manuals and specifications

■ Traffic Engineer – a Trust Indenture consultant

- Provides Trust Indenture services, including traffic and revenue forecasts, annual traffic data reports and annual traffic revenue reports and forecasts
- Provides analysis of traffic operations and plazas in addition to electronic toll collection technical support

■ Pavement Specialist

- Provides annual evaluation of the pavement network to identify pavement performance
- Provide on-site materials engineering support, asset management and pavement design support

■ Program Management Office (PMO)

- Responsible for successful delivery of the capital program including various program support activities
- Monitors, reports, schedules and estimates for all of the projects within the capital program



Consultant and Contractor Support

Statistics based on Move Illinois Program (August 2011 through March 2015)

■ Professional Engineering Services (Procured via Qualifications Based Selection act)

- Design section engineers
- Construction managers
- Design and construction corridor managers
- Survey, geotechnical, materials testing, land acquisition and ITS support
- Estimated 230 unique professional services firms

■ Construction (Procured via lowest responsive and responsible bidder)

- Heavy highway (roadway, bridges, drainage, etc.)
- Facilities, striping, signage, landscaping, etc.
- Estimated 540 unique construction firms



Engineering Board Agenda Items

- ▶ **Construction contract awards**
- ▶ **Professional services contract awards**
- ▶ **Professional services contract supplements and renewals**
- ▶ **Construction Authorizations to Proceed for construction change orders/extra work orders in excess of \$200,000**
- ▶ **Partial and final releases of retainage on construction contracts**
- ▶ **Land management and acquisition (DiBenedetto items)**

Goals and Initiatives

- Committed to the development of a safe and efficient toll highway system through all phases from planning to maintenance and operations, with a focus on continuous improvement and customer service
- Successfully deliver capital improvements
- 24/7/365 maintenance and operation of the road
- Ensure system integrity
- Plan and program future projects
- Be progressive and innovative





THANK YOU