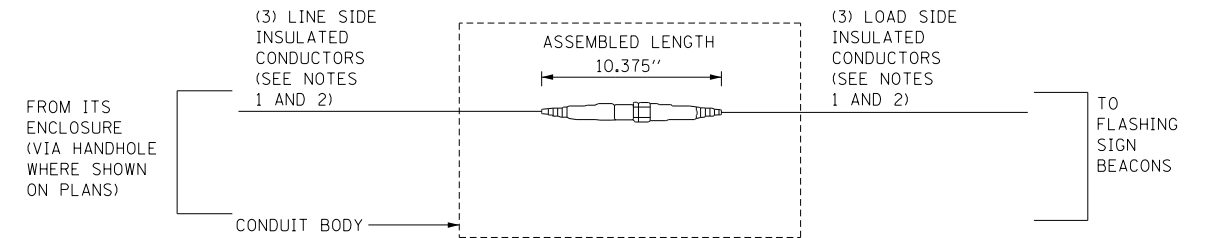
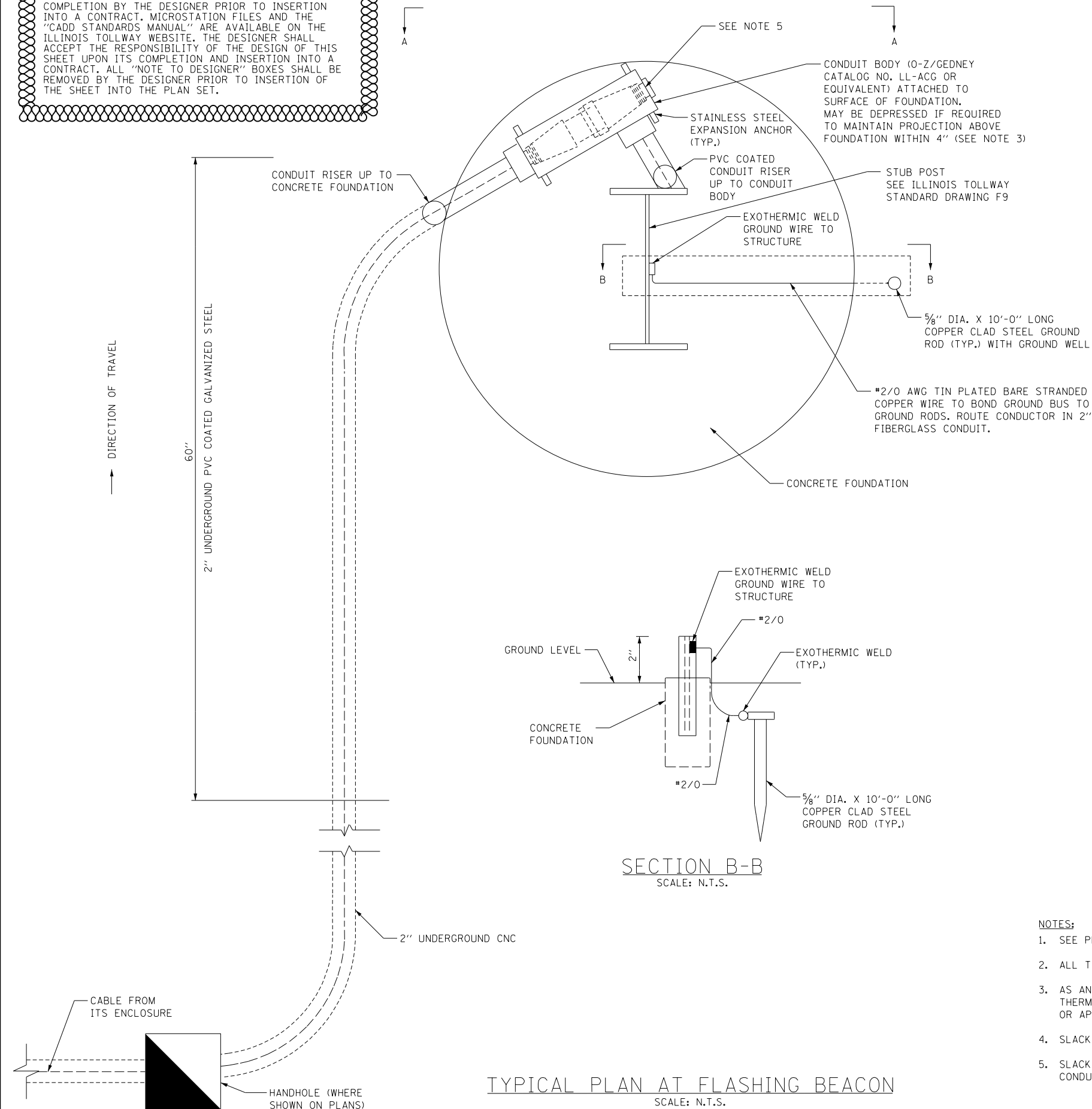
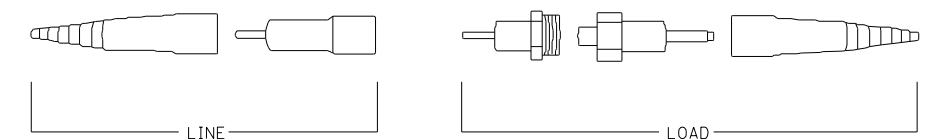


NOTE TO DESIGNER

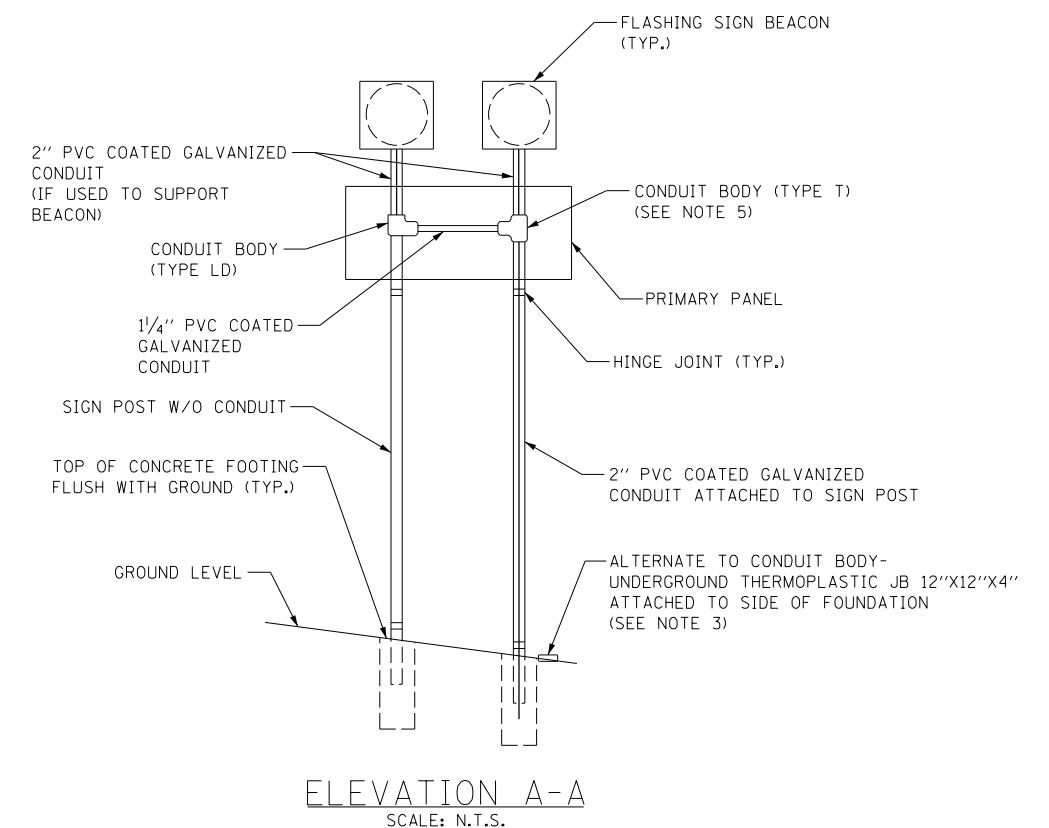
THIS BASE SHEET SHOWS TYPICAL NEW CONSTRUCTION BUT IT IS NOT A STANDARD DRAWING. IT REQUIRES COMPLETION BY THE DESIGNER PRIOR TO INSERTION INTO A CONTRACT. MICROSTATION FILES AND THE "CADD STANDARDS MANUAL" ARE AVAILABLE ON THE ILLINOIS TOLLWAY WEBSITE. THE DESIGNER SHALL ACCEPT THE RESPONSIBILITY OF THE DESIGN OF THIS SHEET UPON ITS COMPLETION AND INSERTION INTO A CONTRACT. ALL "NOTE TO DESIGNER" BOXES SHALL BE REMOVED BY THE DESIGNER PRIOR TO INSERTION OF THE SHEET INTO THE PLAN SET.



NON-FUSED BREAKAWAY ELECTRICAL CONNECTORS



NON-FUSED BREAKAWAY ELECTRICAL CONNECTORS EXPLODED VIEW



NOTES:

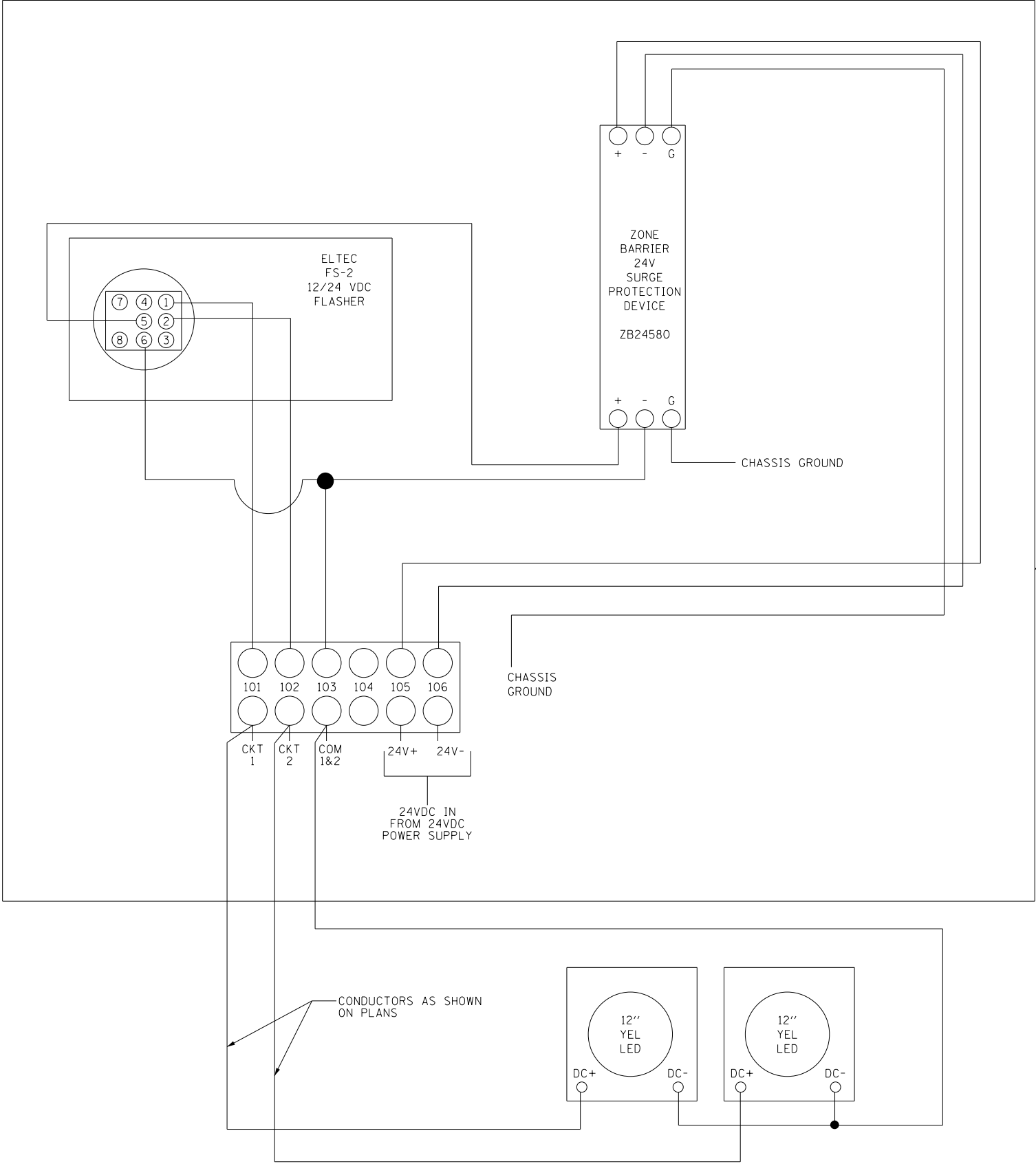
1. SEE PLANS FOR REQUIRED CONDUCTOR SIZES.
2. ALL THREE CONDUCTORS SHALL BE IN ONE HARNESS.
3. AS AN ALTERNATE TO THE CONDUIT BODY ON FOUNDATION, USE THERMOPLASTIC JUNCTION BOXES (CARLON PART NO. E989UUN OR APPROVED EQUAL)
4. SLACK IN LINE SIDE CABLE SHALL BE PROVIDED IN HANDHOLE.
5. SLACK IN LOAD SIDE CABLE SHALL BE PROVIDED IN TYPE "T" CONDUIT BODY, BUT CABLE SHALL BE TIED.

M-ITS-1700



FLASHING SIGN BEACON
INSTALLATION BREAKAWAY
ELECTRICAL DETAIL

DATE
3-31-2016



24V FLASHING BEACON ASSEMBLY	
QUANTITY	PART AND DESCRIPTION
1	ZB24580 24VDC SURGE PROTECTION DEVICE
1	ELTEC FS2 24/12VDC FLASHER
1	8 PIN HARNESS FOR FS2 FLASHER
1	MARATHON 1506 TERMINAL BLOCK
2	TRASTAR, INC. DURALIGHT LED, JXC300-HFTDCY, 24VDC
2	12" SIGNAL HOUSING FOR LED
2	12" TUNNEL VISORS (FOR ABOVE)

NOTE: SIGNAL HOUSING SHALL BE POLYCARBONATE YELLOW BODY, BLACK DOOR, WITH BLACK TUNNEL VISOR AND LED MODULE INSTALLED.

FS-2 WIRING HARNESS		
PIN	COLOR	FUNCTION
1	BLUE	FLASH OUTPUT 1
2	ORANGE	FLASH OUTPUT 2
5	RED	12V-32VDC IN
6	BLACK	DC COMMON

NOTE TO DESIGNER

THIS BASE SHEET SHOWS TYPICAL NEW CONSTRUCTION BUT IT IS NOT A STANDARD DRAWING. IT REQUIRES COMPLETION BY THE DESIGNER PRIOR TO INSERTION INTO A CONTRACT. MICROSTATION FILES AND THE "CADD STANDARDS MANUAL" ARE AVAILABLE ON THE ILLINOIS TOLLWAY WEBSITE. THE DESIGNER SHALL ACCEPT THE RESPONSIBILITY OF THE DESIGN OF THIS SHEET UPON ITS COMPLETION AND INSERTION INTO A CONTRACT. ALL "NOTE TO DESIGNER" BOXES SHALL BE REMOVED BY THE DESIGNER PRIOR TO INSERTION OF THE SHEET INTO THE PLAN SET.

THE DESIGNER SHALL DETERMINE THE WIRING SIZE AND TYPE FROM THE FLASHING UNIT TO THE LED HEADS.



FLASHING SIGN BEACON
INSTALLATION
WIRING DIAGRAM

DATE
3-31-2016