

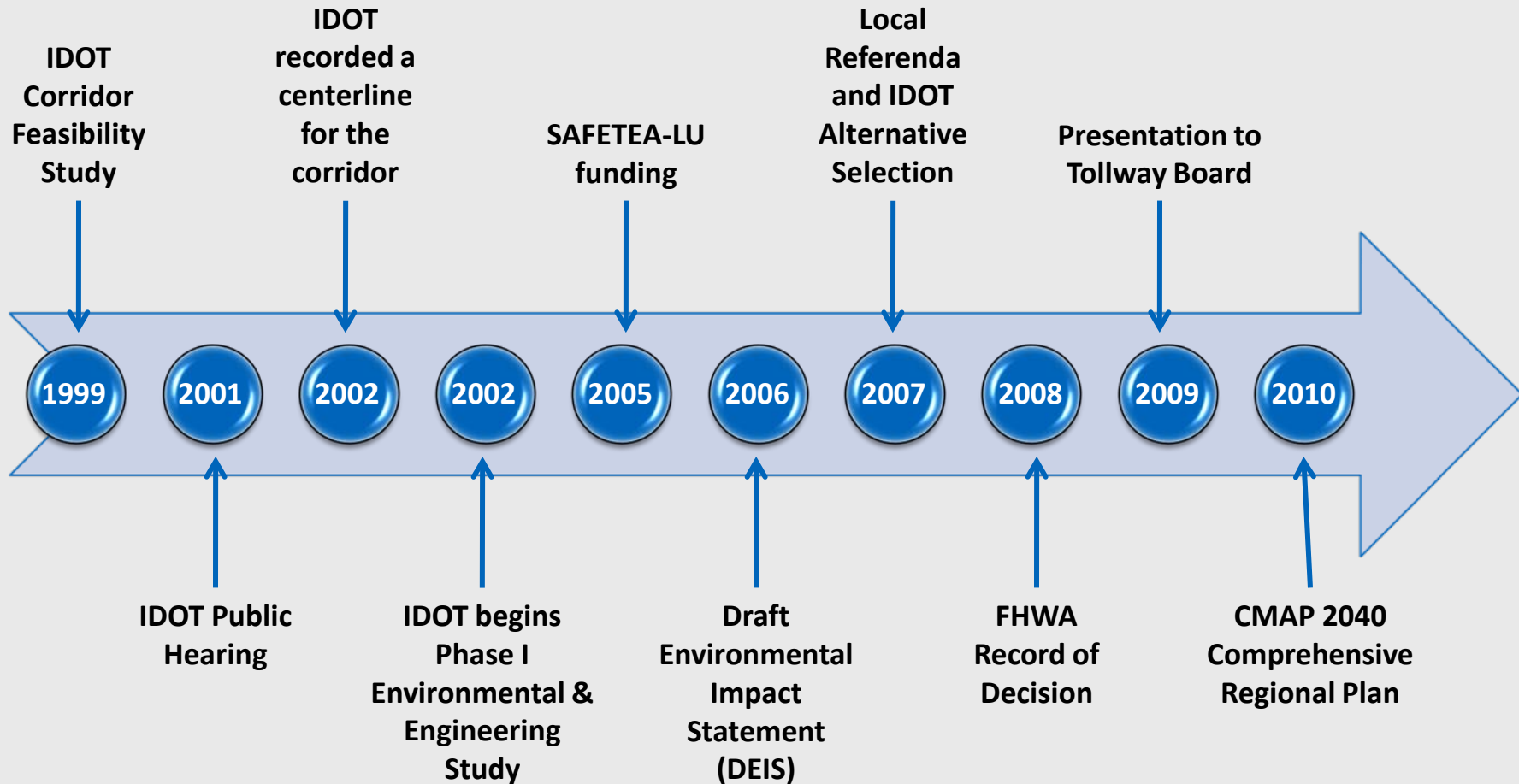


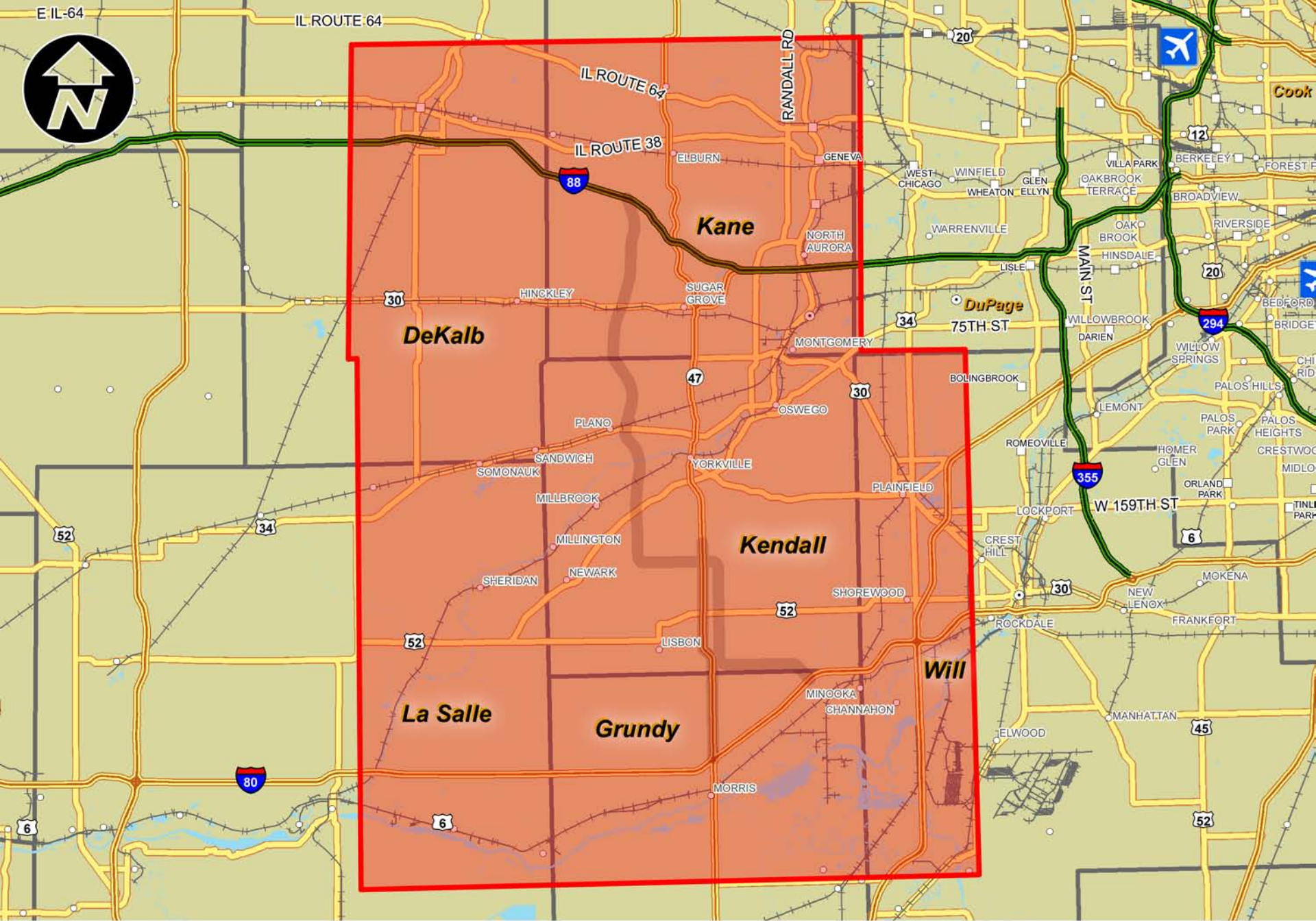
Prairie Parkway

Rocco Zuccherro

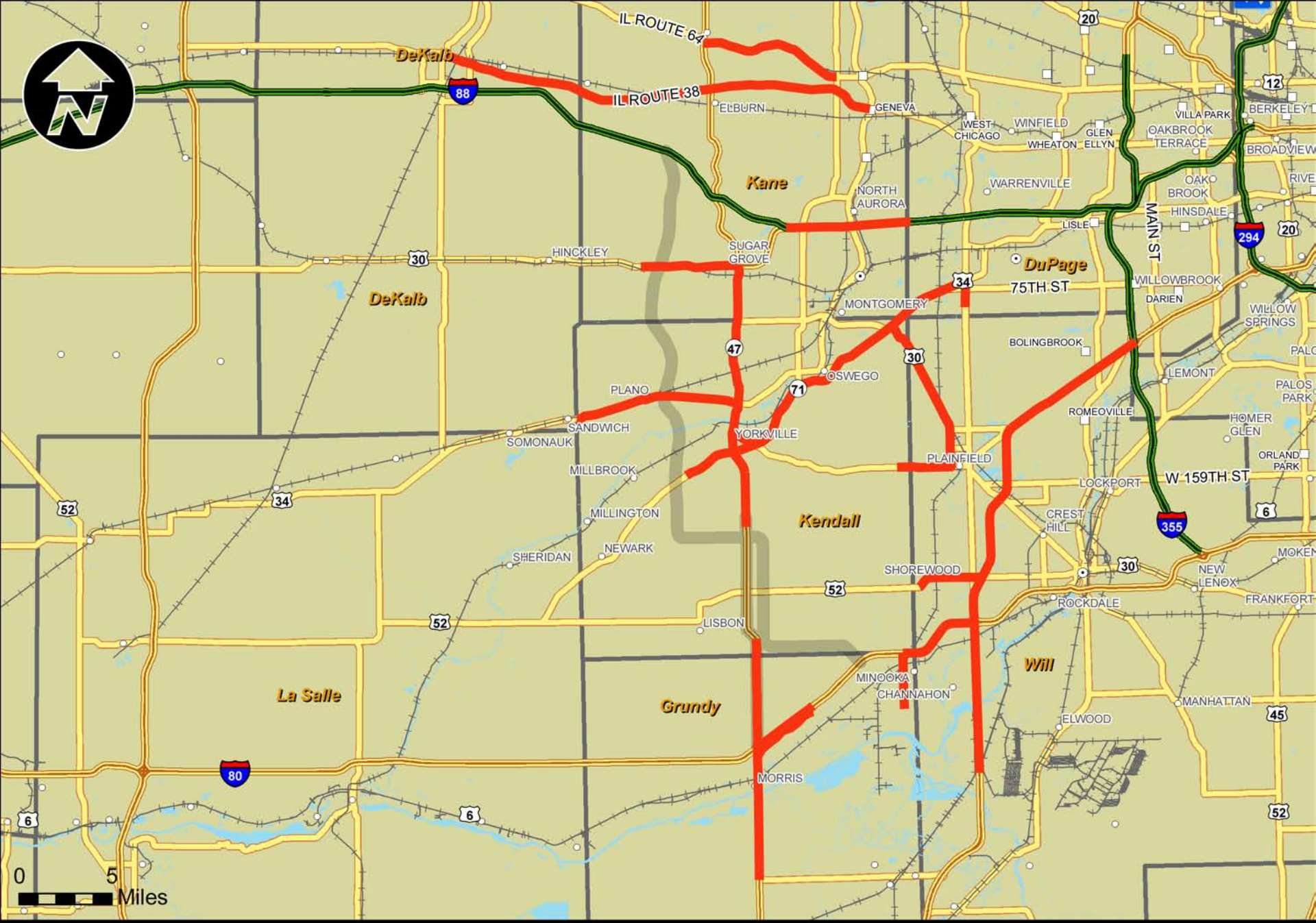
September 30, 2010

Project History





Proposed Prairie Parkway Study Area

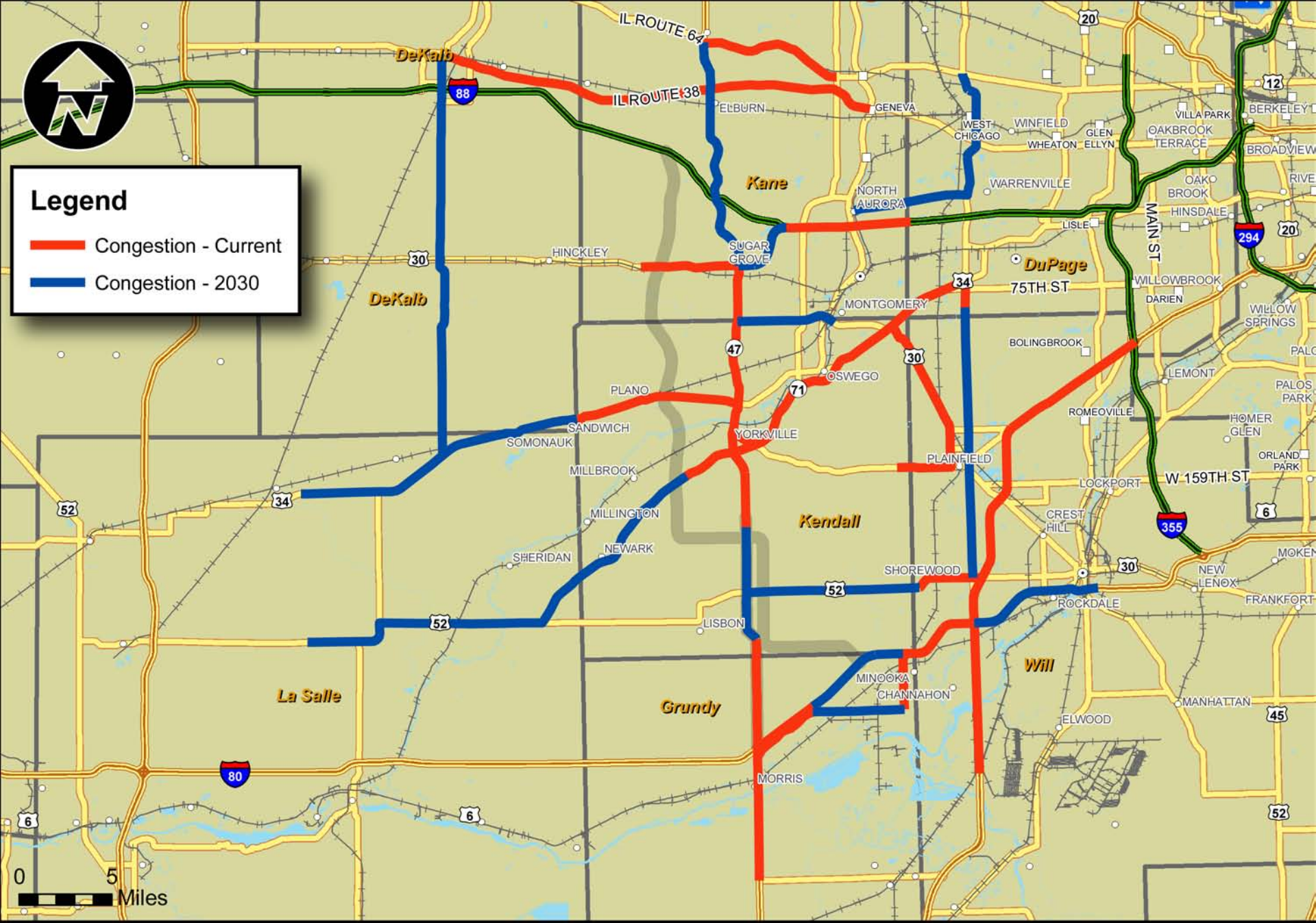


Current Congestion



Legend

- Congestion - Current
- Congestion - 2030



Current and Projected Congestion



Purpose and Need

7

- Provide Regional North South Mobility
- Address Local System Deficiencies
- Improve Access to Regional Jobs

Population and Jobs by County

8

Existing and Projected Population and Employment

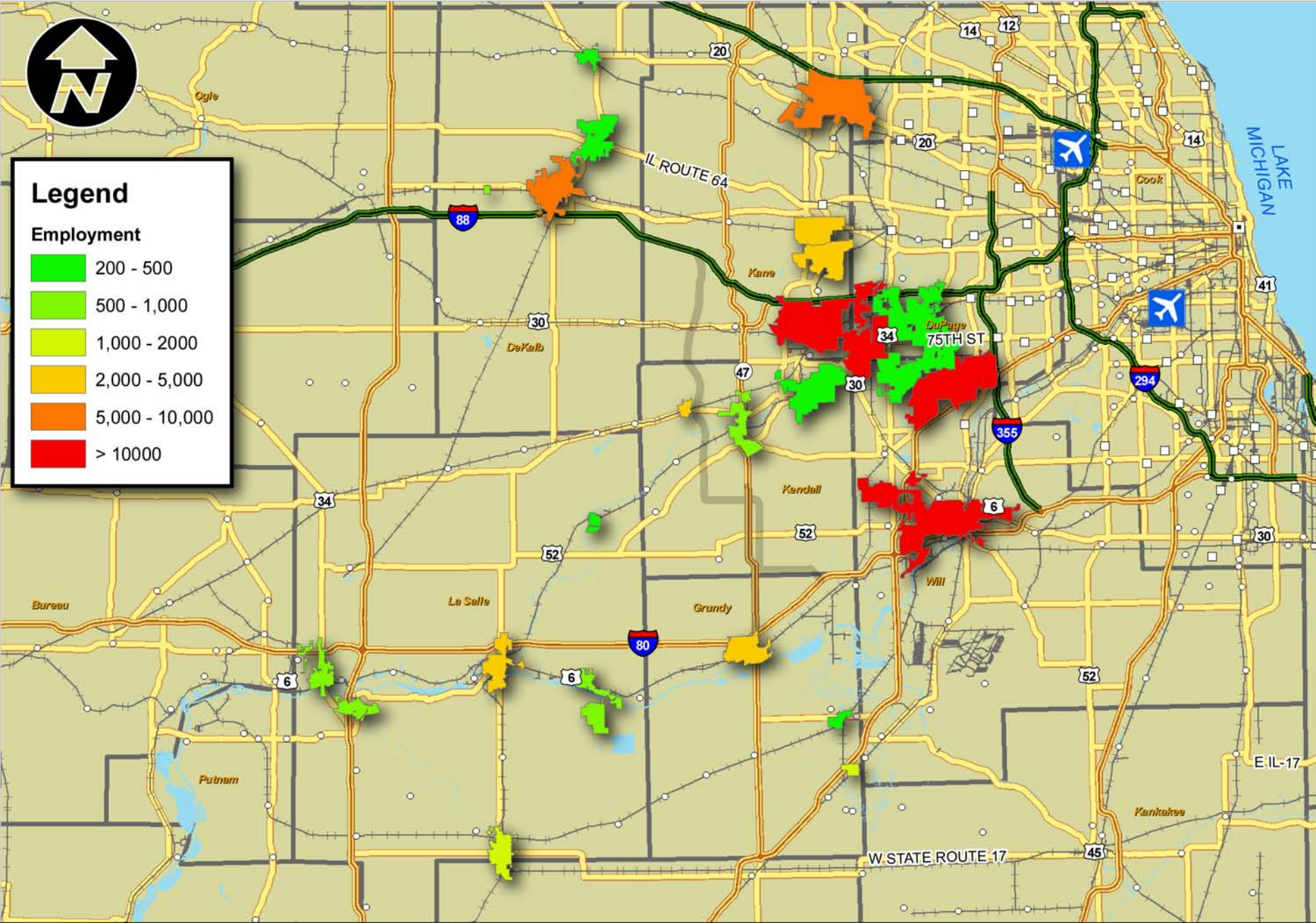
County	2007 Population	2030 Population	2000 Employment	2030 Employment
Kane	501,021	718,464	206,107	352,208
Kendall	96,818	170,000	21,540	70,000
Grundy	47,144	65,000	20,070	35,000



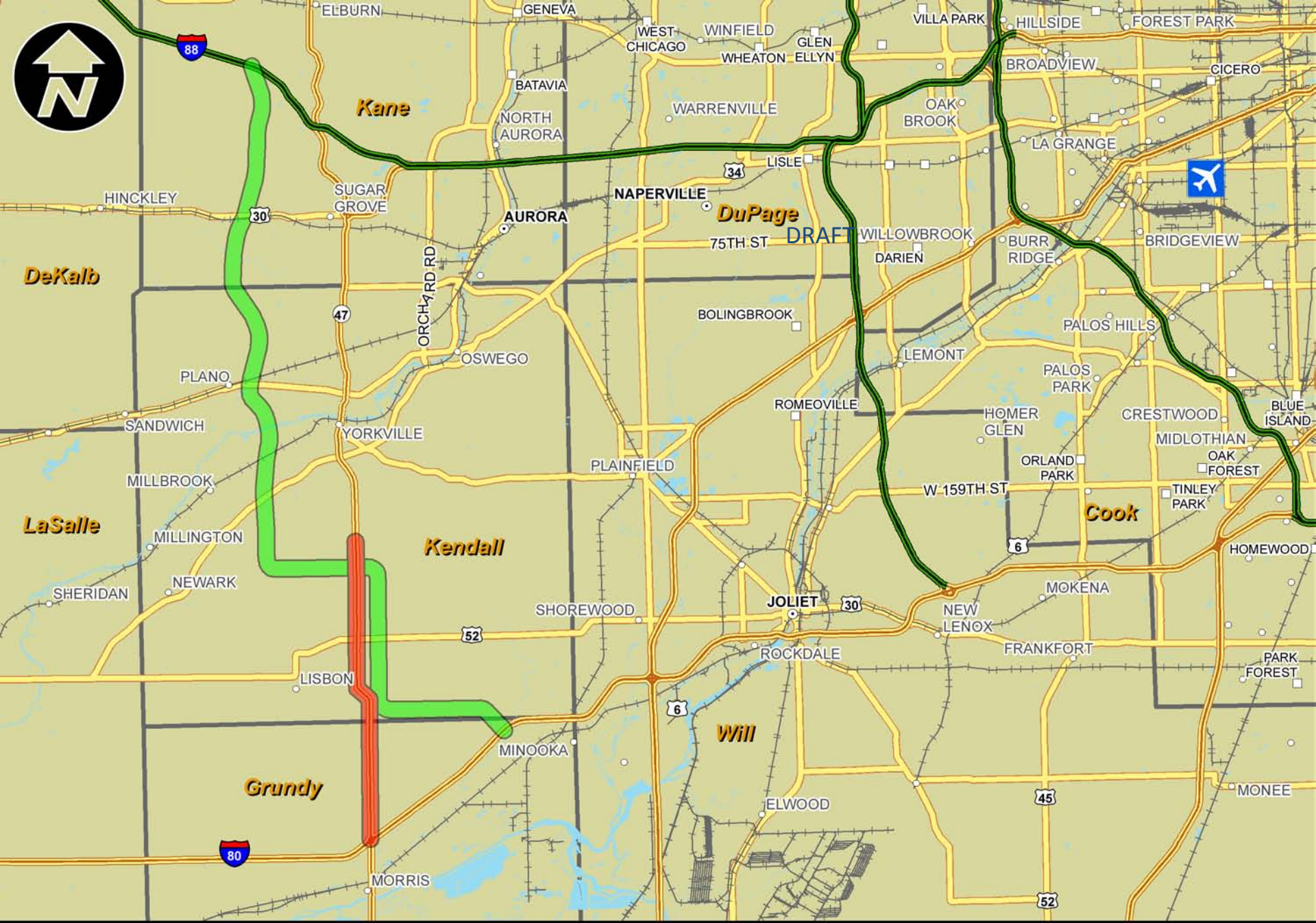
Legend

Employment

Green	200 - 500
Light Green	500 - 1,000
Yellow-Green	1,000 - 2,000
Yellow	2,000 - 5,000
Orange	5,000 - 10,000
Red	> 10000

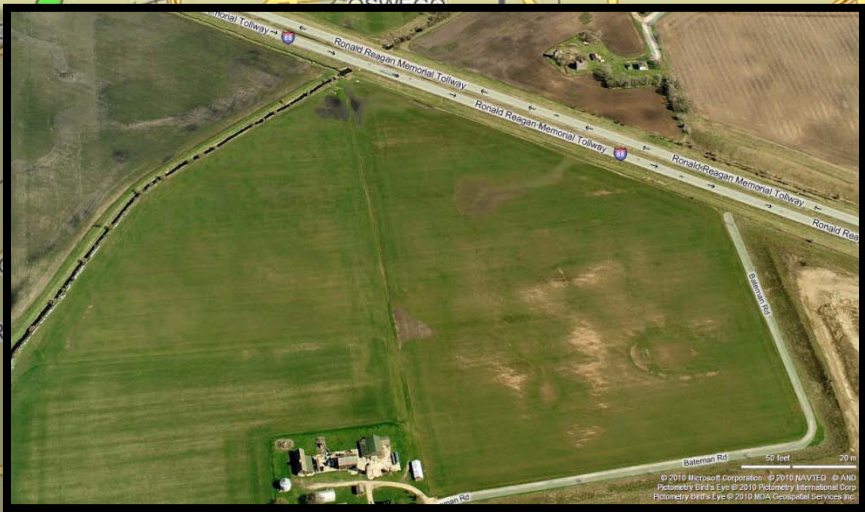
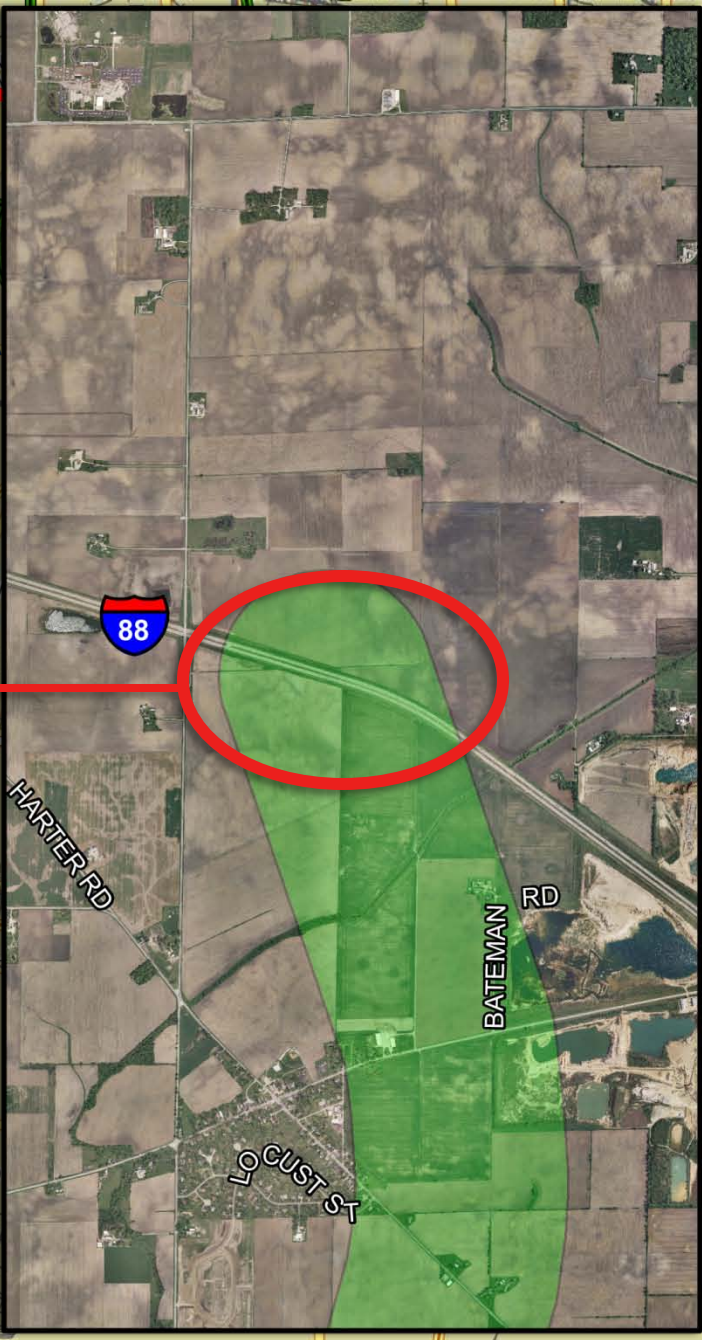


Employment Levels

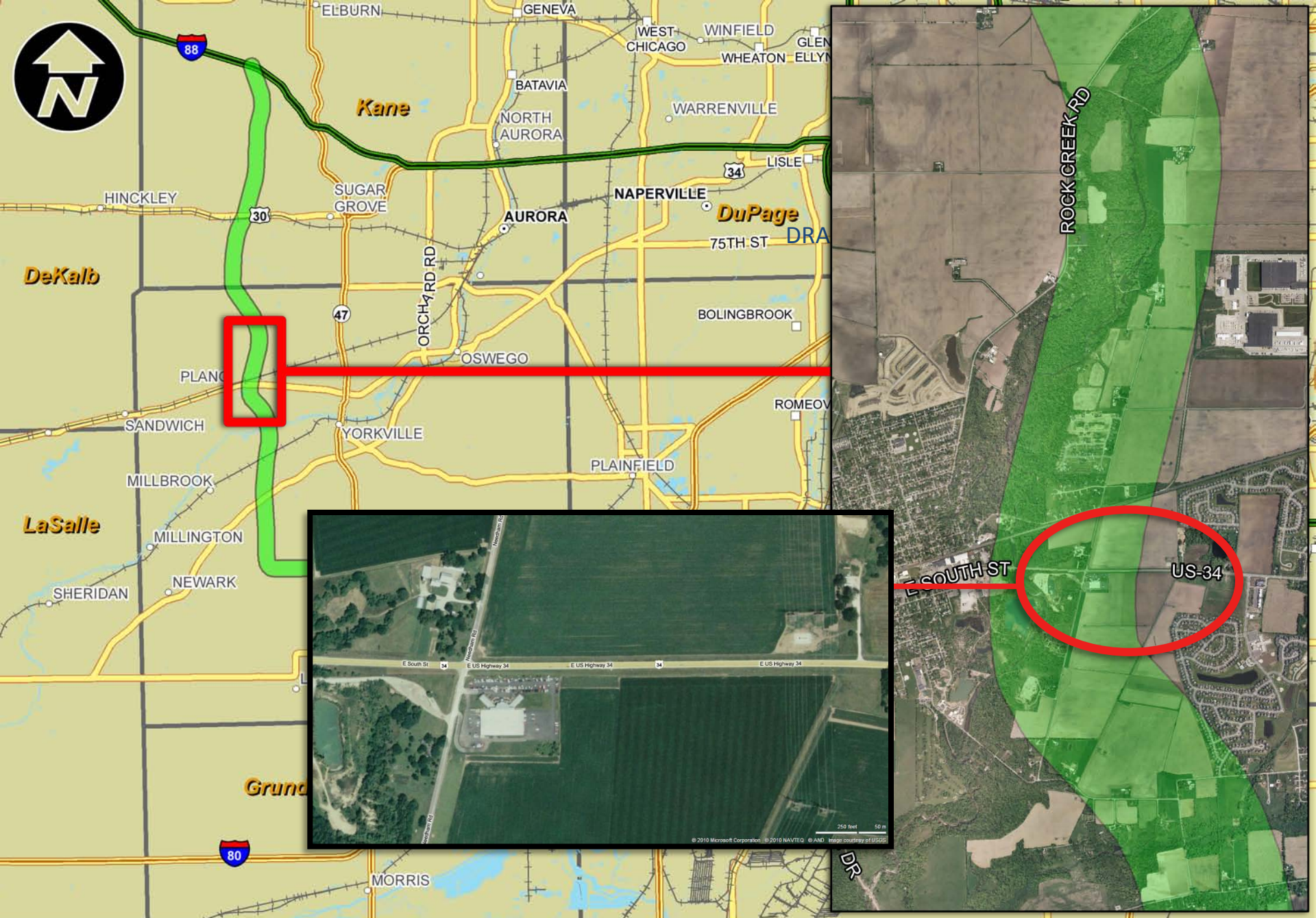


Proposed Prairie Parkway Alignment

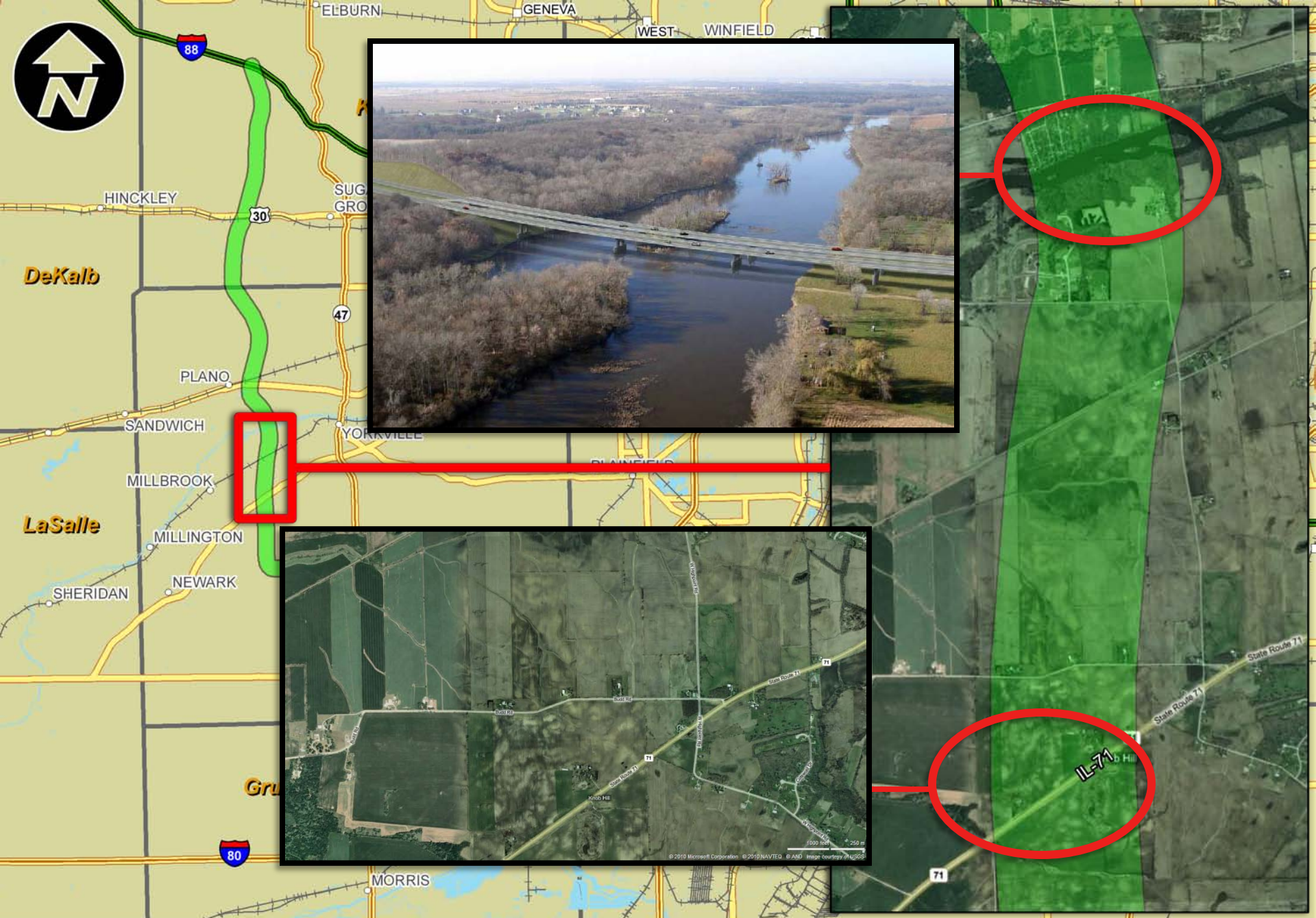




Proposed Prairie Parkway at I-88



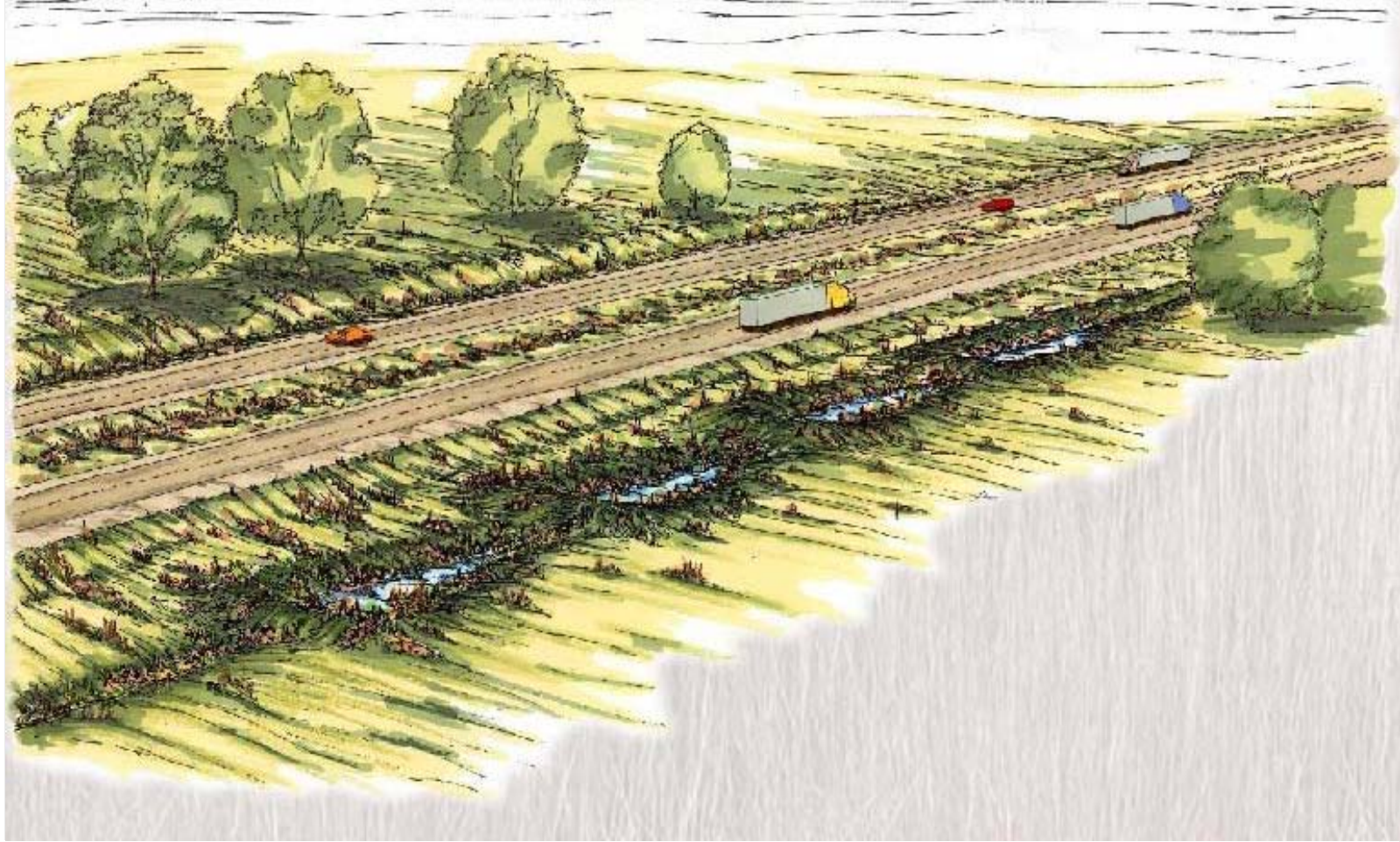
Proposed Prairie Parkway at US-34



Proposed Prairie Parkway at the Fox River and IL 71

Key Resource Impacts

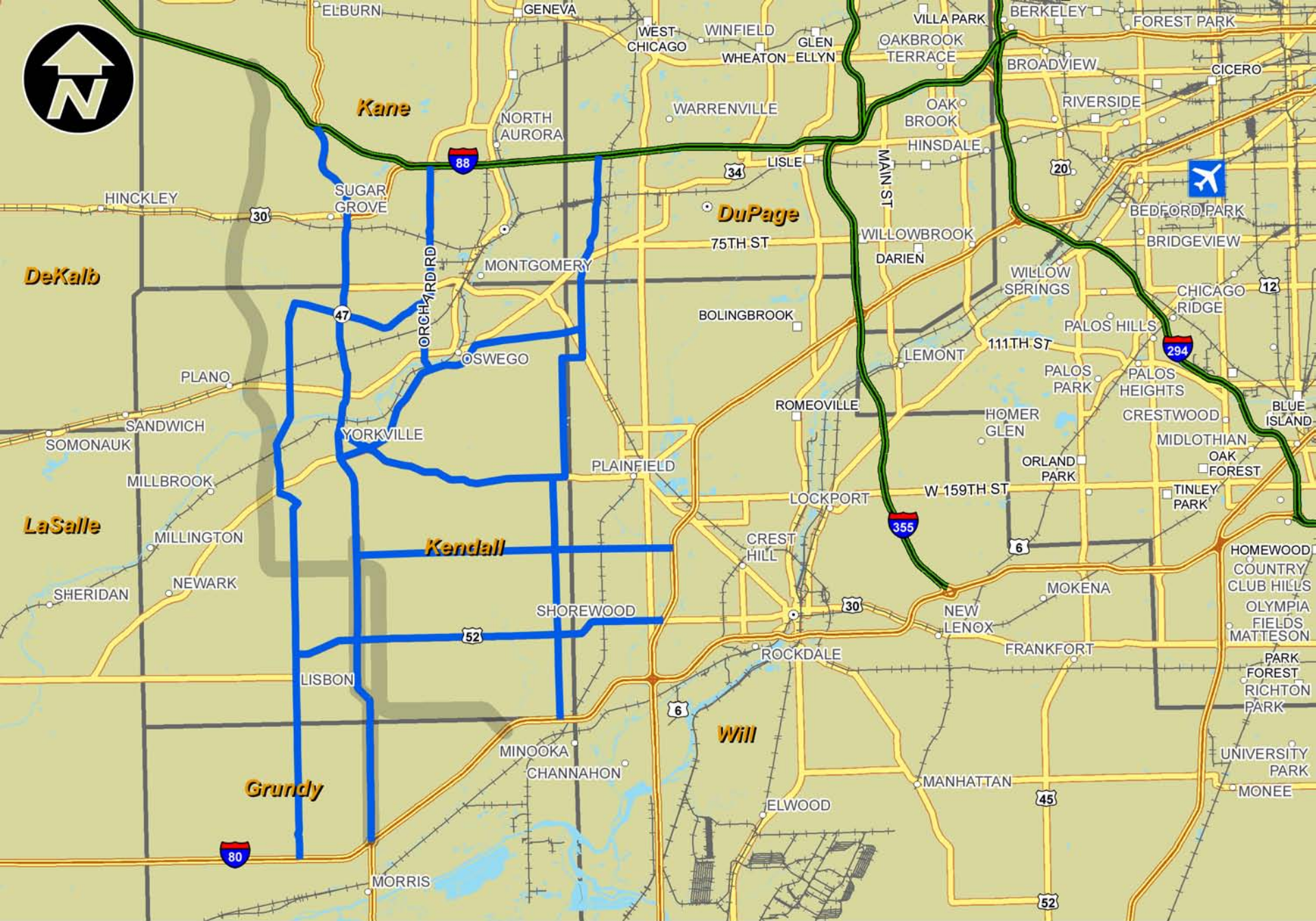
Resource	Impact
Total ROW Required	2,645 acres
Total Farmland Impacted/Prime	2,593 acres (98%)/2,505 acres
Farms	188
Displacements	21 residences (9 farms)
Stream Crossings	83
Wetland Impact	2.71 acres
Forest Impact	54 acres



15

Reduced Impacts

- Mitigation for storm water impacts
- Provide for a multi-purpose trail
- Maintain Corridor Planning Group
- Make provisions for agricultural field tiles



Proposed Arterial Improvements

Cost Estimate

17

New North-South Roadway; I-80 to I-88: \$ 3,263M

Funding Sources to Date

National Corridor Funds: \$ 19M

SAFETEA-LU NCIIP Funds (US34 Interchange): \$ 69M

SAFETEA-LU NCIIP Funds (I-80 to I-88): \$ 190M*

State Funds for Corridor Protection: \$ 4M

Total Fund Sources to Date: \$ 282M

*Earmark is currently under review for reappropriation

Next Steps

18

- Prioritize relative to other projects
- Update traffic to assess viability
- Determine Tollway role
- Determine whether to seek General Assembly Resolution

Summary

19

Projects Reviewed to Date

- I-294/I-57 Interchange
- I-90 Corridor
- Elgin-O'Hare/Western Bypass
- Tollway Systemwide Needs
- IL-53 Extension
- Congestion Pricing/Managed Lanes
- Prairie Parkway

Upcoming Projects

- Illiana Corridor
- Systemwide Facilities



THANK YOU