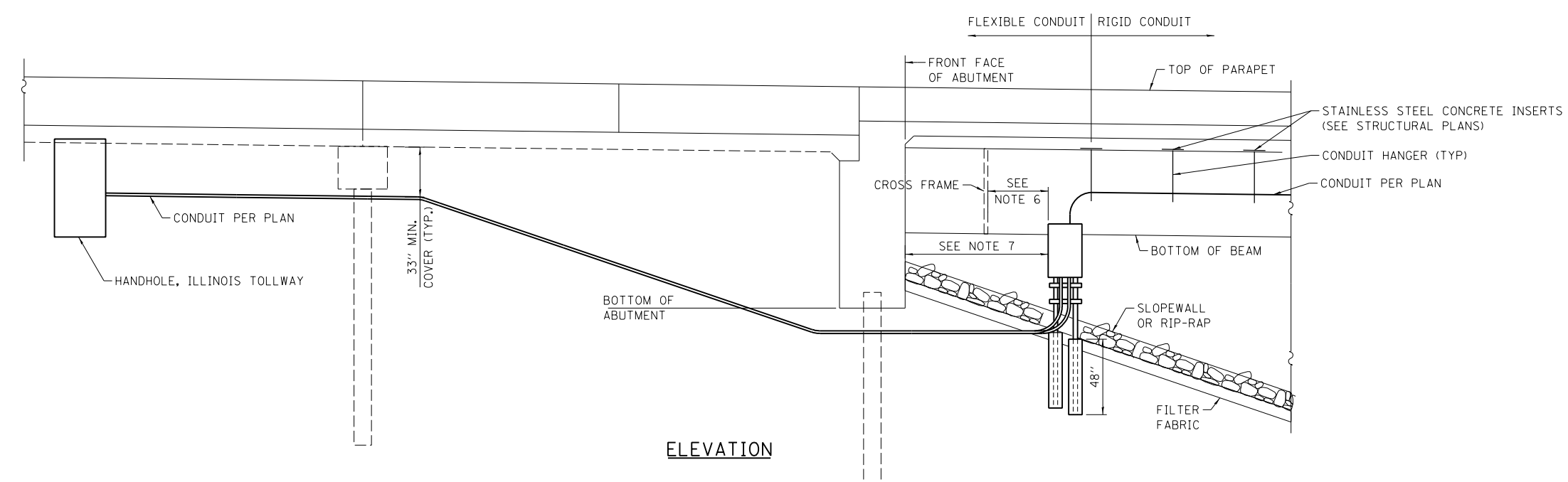


PLAN



ELEVATION

NOTE TO DESIGNER

THIS BASE SHEET SHOWS TYPICAL NEW CONSTRUCTION BUT IT IS NOT A STANDARD DRAWING. IT REQUIRES COMPLETION BY THE DESIGNER PRIOR TO INSERTION INTO A CONTRACT. MICROSTATION FILES AND THE "CADD STANDARDS MANUAL" ARE AVAILABLE ON THE ILLINOIS TOLLWAY WEBSITE. THE DESIGNER SHALL ACCEPT THE RESPONSIBILITY OF THE DESIGN OF THIS SHEET UPON ITS COMPLETION AND INSERTION INTO A CONTRACT. ALL "NOTE TO DESIGNER" BOXES SHALL BE REMOVED PRIOR TO INSERTION OF THE SHEET INTO THE PLAN SET.

NOTES:

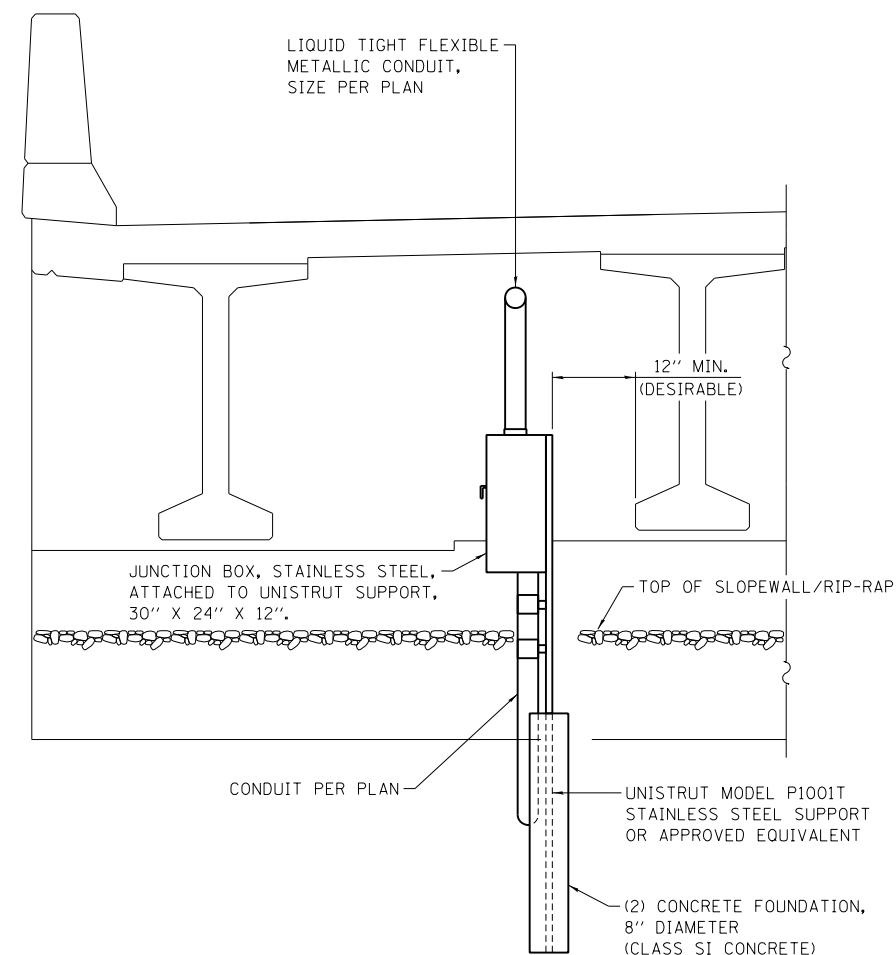
1. THE CONTRACTOR SHALL FURNISH & INSTALL A PULL TAPE THROUGH ALL CONDUITS INSTALLED AS PART OF THIS WORK.
2. ALL HARDWARE SHALL BE STAINLESS STEEL IN ACCORDANCE WITH ARTICLE 1006.31 OF THE STANDARD SPECIFICATIONS.
3. CONDUIT SHALL BE SUPPORTED AT A MAXIMUM INTERVAL OF 5' AND WITHIN 2.5' OF ANY JUNCTION BOX, COUPLING/FITTING, OR CHANGE IN DIRECTION.
4. THE JUNCTION BOX SHALL MEET THE REQUIREMENTS OF ARTICLE 1088.04 OF THE STANDARD SPECIFICATIONS. A HINGED DOOR AND PROVISIONS FOR 3-POINT LOCK OR A PAD-LOCK ARE REQUIRED.
5. FLEXIBLE CONDUIT SHALL BE LIMITED TO A MAXIMUM LENGTH OF 5'.
6. JUNCTION BOX SHALL BE LOCATED AT LEAST 24" FROM CROSS FRAMES.
7. PROVIDE DIMENSION FROM ABUTMENT.

SHEET 1 OF 4
BASE SHEET M-ITS-1900



CONDUIT DETAILS AT
INTEGRAL ABUTMENT BRIDGE
STANDARD SLOPE WALL

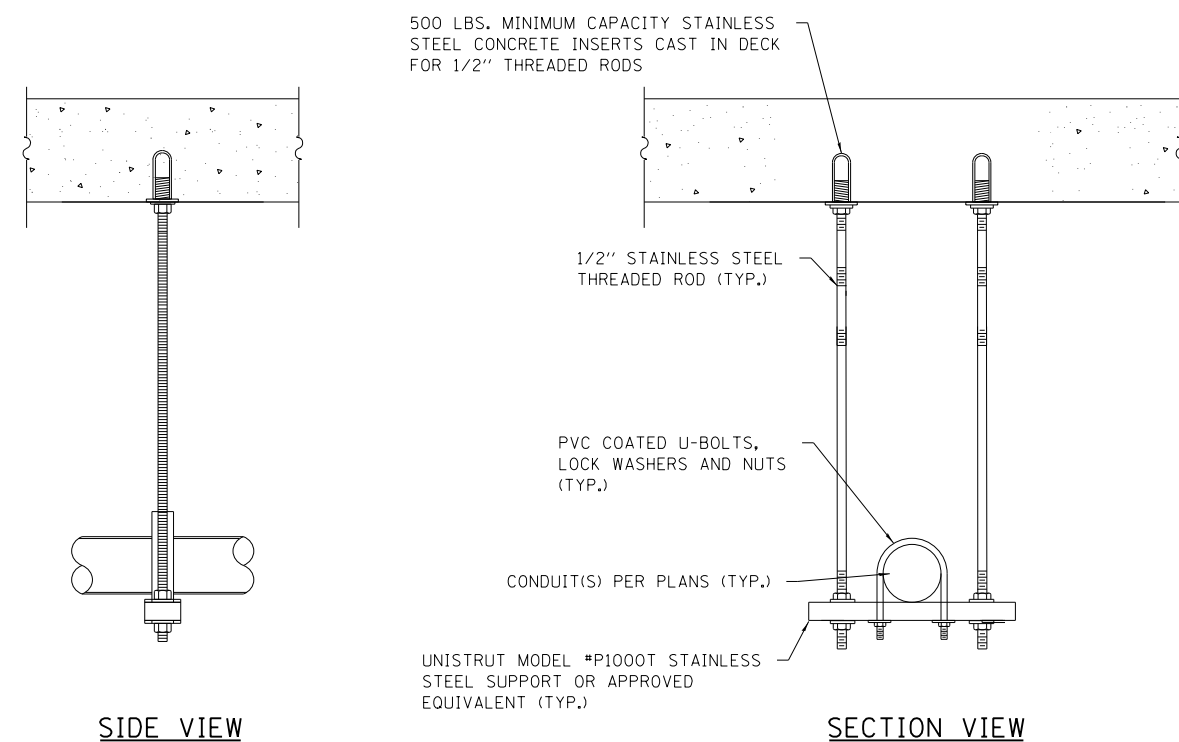
DATE
3-31-2016



VIEW AT ABUTMENT - GROUND MOUNTED JUNCTION BOX

NOTE TO DESIGNER

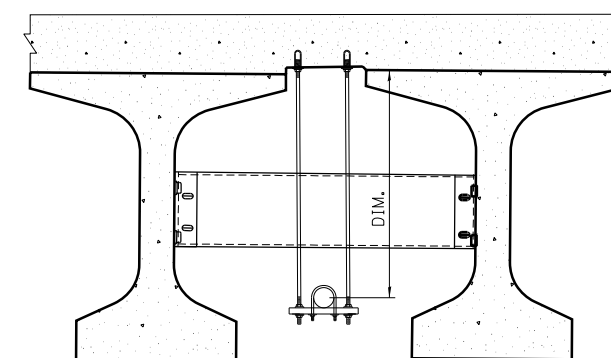
THIS BASE SHEET SHOWS TYPICAL NEW CONSTRUCTION BUT IT IS NOT A STANDARD DRAWING. IT REQUIRES COMPLETION BY THE DESIGNER PRIOR TO INSERTION INTO A CONTRACT. MICROSTATION FILES AND THE "CADD STANDARDS MANUAL" ARE AVAILABLE ON THE ILLINOIS TOLLWAY WEBSITE. THE DESIGNER SHALL ACCEPT THE RESPONSIBILITY OF THE DESIGN OF THIS SHEET UPON ITS COMPLETION AND INSERTION INTO A CONTRACT. ALL "NOTE TO DESIGNER" BOXES SHALL BE REMOVED PRIOR TO INSERTION OF THE SHEET INTO THE PLAN SET.



CONDUIT HANGER ASSEMBLY DETAIL

NOTES:

1. CONDUIT SHALL BE SUPPORTED AT A MAXIMUM INTERVAL OF 5' AND WITHIN 2.5' OF ANY JUNCTION BOX, COUPLING/FITTING, OR CHANGE IN DIRECTION.
2. ALL HARDWARE SHALL BE STAINLESS STEEL INACCORDANCE WITH ARTICLE 1006.31 OF THE STANDARD SPECIFICATIONS.
3. THE ELECTRICAL CONTRACTOR SHALL COORDINATE THE LOCATION OF THE CONCRETE INSERTS WITH THE BRIDGE CONTRACTOR.
4. THE COST OF THE CONCRETE INSERTS SHALL BE INCLUDED IN THE COST OF CONDUIT ATTACHED TO STRUCTURE.
5. CONDUIT SHALL BE CENTERED BETWEEN THE BEAMS.
6. CONDUIT SHALL NOT COME INTO CONTACT WITH ANY BRACING OR OTHER STRUCTURAL MEMBERS.
7. PROVIDE 1" MINIMUM CLEARANCE TO ALL STRUCTURAL MEMBERS.



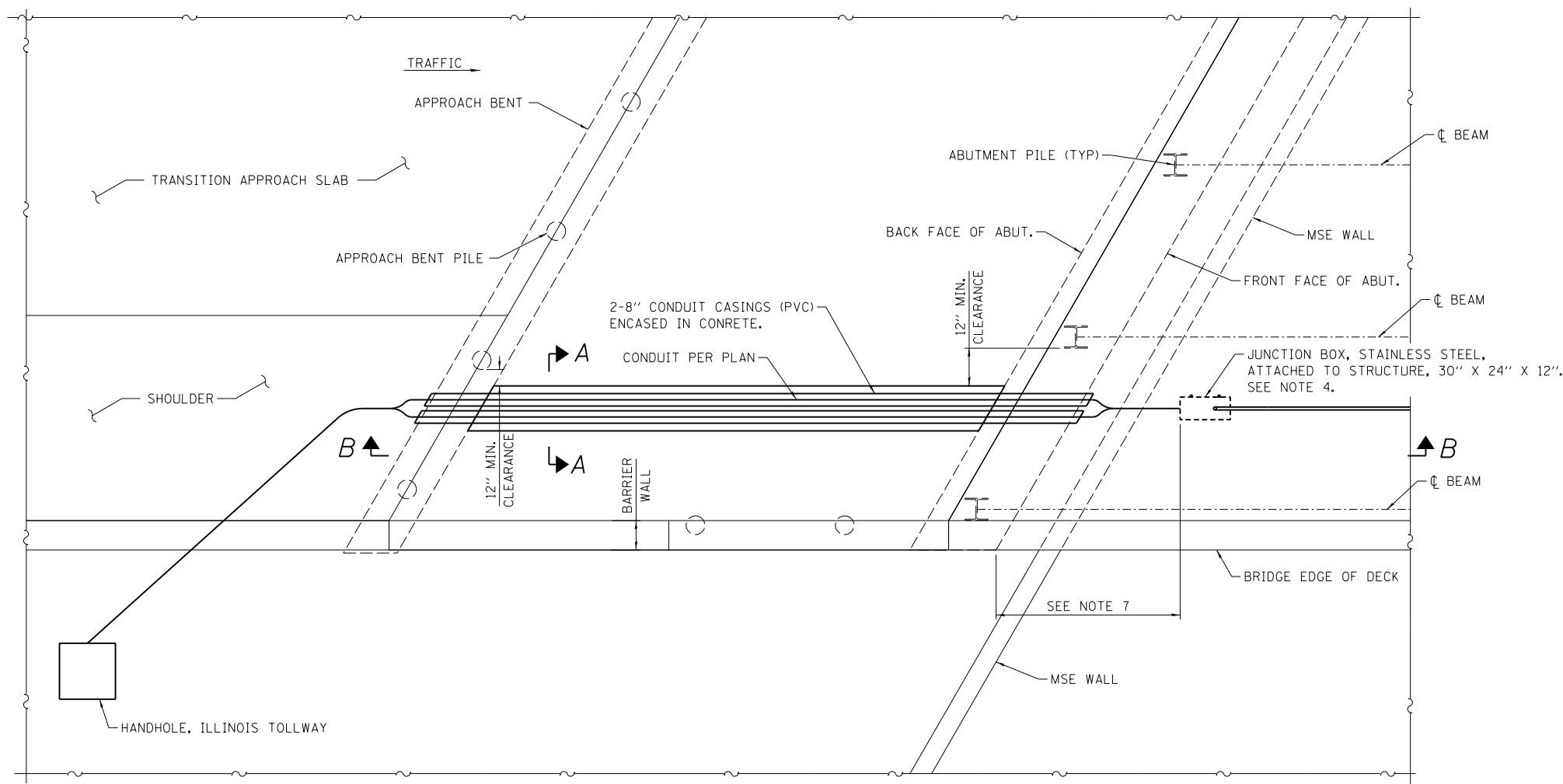
CONDUIT ROUTING AT DIAPHRAGM

SHEET 2 OF 4
BASE SHEET M-ITS-1900

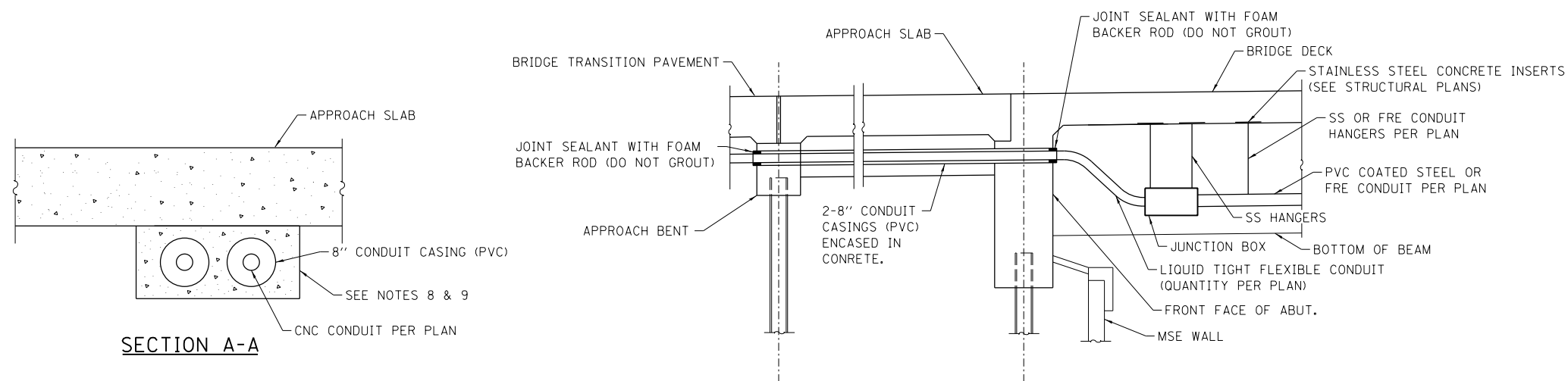


CONDUIT DETAILS AT
INTEGRAL ABUTMENT BRIDGE
STANDARD SLOPE WALL

DATE
3-31-2016



PLAN



SECTION A-A

SECTION B-B

NOTE TO DESIGNER

THIS BASE SHEET SHOWS TYPICAL NEW CONSTRUCTION BUT IT IS NOT A STANDARD DRAWING. IT REQUIRES COMPLETION BY THE DESIGNER PRIOR TO INSERTION INTO A CONTRACT. MICROSTATION FILES AND THE "CADD STANDARDS MANUAL" ARE AVAILABLE ON THE ILLINOIS TOLLWAY WEBSITE. THE DESIGNER SHALL ACCEPT THE RESPONSIBILITY OF THE DESIGN OF THIS SHEET UPON ITS COMPLETION AND INSERTION INTO A CONTRACT. ALL "NOTE TO DESIGNER" BOXES SHALL BE REMOVED PRIOR TO INSERTION OF THE SHEET INTO THE PLAN SET.

NOTES:

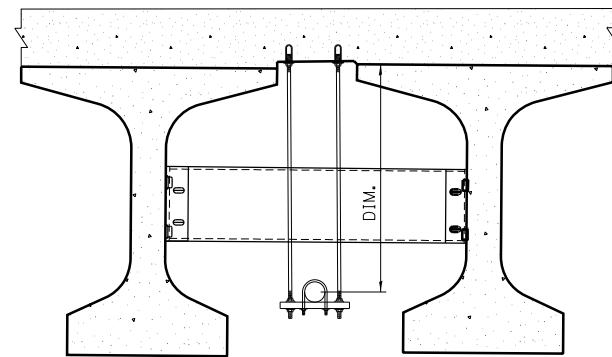
1. THE CONTRACTOR SHALL FURNISH & INSTALL A PULL TAPE THROUGH ALL CONDUITS INSTALLED AS PART OF THIS WORK.
2. ALL HARDWARE SHALL BE STAINLESS STEEL IN ACCORDANCE WITH ARTICLE 1006.31 OF THE STANDARD SPECIFICATIONS.
3. CONDUIT SHALL BE SUPPORTED AT A MAXIMUM INTERVAL OF 5' AND WITHIN 2.5' OF ANY JUNCTION BOX, COUPLING/FITTING, OR CHANGE IN DIRECTION.
4. THE JUNCTION BOX SHALL MEET THE REQUIREMENTS OF ARTICLE 1088.04 OF THE STANDARD SPECIFICATIONS.
5. FLEXIBLE CONDUIT SHALL BE LIMITED TO A MAXIMUM LENGTH OF 5'.
6. JUNCTION BOX SHALL BE LOCATED AT LEAST 24" FROM CROSS FRAMES.
7. PROVIDE DIMENSION FROM ABUTMENT.
8. CONCRETE ENCASED CONDUIT TO BE PLACED MONOLITHIC WITH THE APPROACH SLAB
9. PROVIDE A MINIMUM OF 3" CONCRETE ENCASEMENT AROUND CONDUIT.

SHEET 3 OF 4
BASE SHEET M-ITS-1900

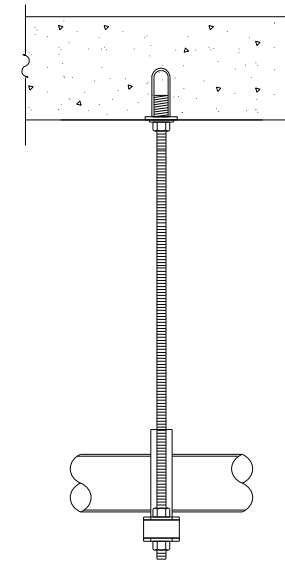


CONDUIT DETAILS AT
INTEGRAL ABUTMENT BRIDGE
WITH MSE WALL

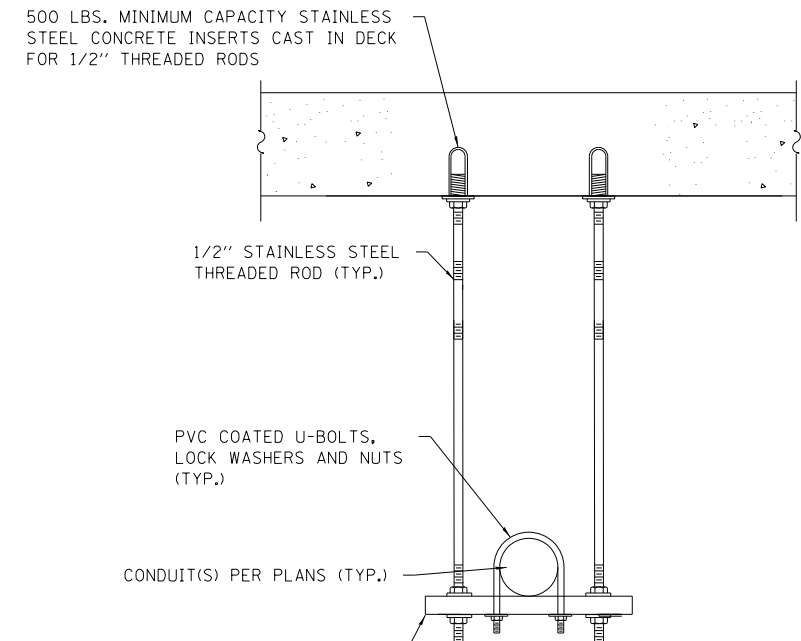
DATE
3-31-2016



CONDUIT ROUTING AT DIAPHRAGM



SIDE VIEW



SECTION VIEW

CONDUIT HANGER ASSEMBLY DETAIL

NOTES:

1. CONDUIT SHALL BE SUPPORTED AT A MAXIMUM INTERVAL OF 5' AND WITHIN 2.5' OF ANY JUNCTION BOX, COUPLING/FITTING OR CHANGE IN DIRECTION..
2. ALL HARDWARE SHALL BE STAINLESS STEEL INACCORDANCE WITH ARTICLE 1006.31 OF THE STANDARD SPECIFICATIONS.
3. THE ELECTRICAL CONTRACTOR SHALL COORDINATE THE LOCATION OF THE CONCRETE INSERTS WITH THE BRIDGE CONTRACTOR.
4. THE COST OF THE CONCRETE INSERTS SHALL BE INCLUDED IN THE COST OF CONDUIT ATTACHED TO STRUCTURE.
5. CONDUIT SHALL BE CENTERED BETWEEN THE BEAMS.
6. CONDUIT SHALL NOT COME INTO CONTACT WITH ANY BRACING OR OTHER STRUCTURAL MEMBERS.
7. PROVIDE 1" MINIMUM CLEARANCE TO ALL STRUCTURAL MEMBERS.

NOTE TO DESIGNER

THIS BASE SHEET SHOWS TYPICAL NEW CONSTRUCTION BUT IT IS NOT A STANDARD DRAWING. IT REQUIRES COMPLETION BY THE DESIGNER PRIOR TO INSERTION INTO A CONTRACT. MICROSTATION FILES AND THE "CADD STANDARDS MANUAL" ARE AVAILABLE ON THE ILLINOIS TOLLWAY WEBSITE. THE DESIGNER SHALL ACCEPT THE RESPONSIBILITY OF THE DESIGN OF THIS SHEET UPON ITS COMPLETION AND INSERTION INTO A CONTRACT. ALL "NOTE TO DESIGNER" BOXES SHALL BE REMOVED PRIOR TO INSERTION OF THE SHEET INTO THE PLAN SET.

SHEET 4 OF 4
BASE SHEET M-ITS-1900



CONDUIT DETAILS AT
INTEGRAL ABUTMENT BRIDGE
WITH MSE WALL

DATE
3-31-2016