

Illinois Tollway Trees Initiative Systemwide Landscape Masterplan

November 29, 2017

Bryan Wagner



Today's Agenda

Tollway Systemwide Landscape Master Plan

- Program goal and objectives
- Approach
- Planting methodology
- Research
- Implementation and maintenance
- Planting approach and cost summary



Landscape Master Plan Concept

Goal

- Establish and maintain healthy tree communities along the 294-mile length of the Illinois Tollway system

Objectives

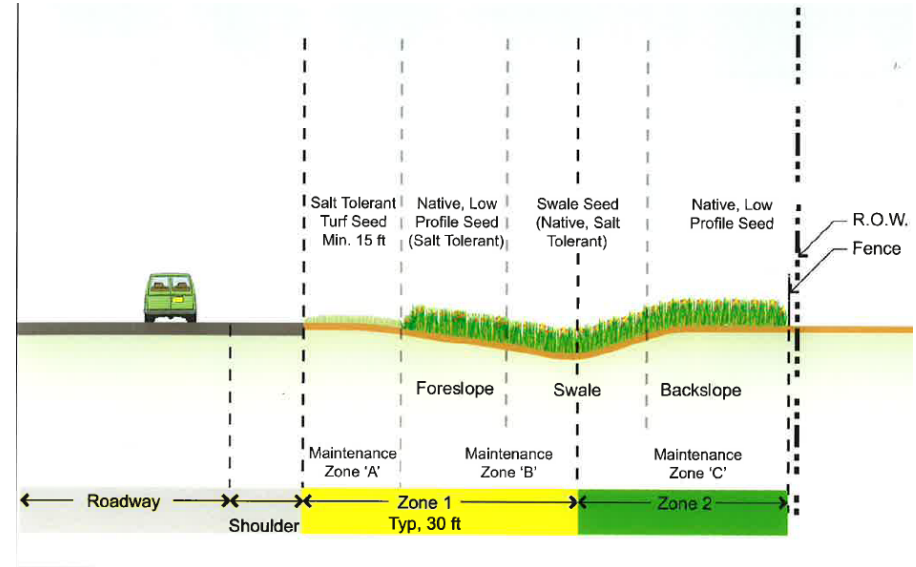
- Identify locations for planting trees within the Tollway system
- Update planting standards and specifications based on recommendations provided by The Arboretum
- Develop experimental approaches for tree installation and care in stressful roadway conditions
- Develop extended term maintenance programs
- Install 58,000 trees with the intent of increasing regional tree canopy coverage
- Identify viable living snow fence locations



Assessment Approach

Guiding criteria

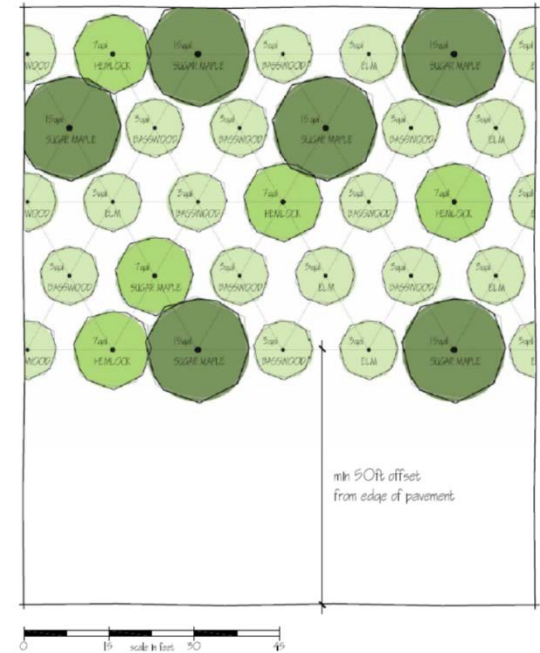
- Clear zone
- Utilities
- Drainage
- Soils
- Accessibility and maintenance
- Connectivity
- Sustainability – short- and long-term maintenance
- Compatibility with Tollway sustainable initiatives



Planting Methodology

Layout

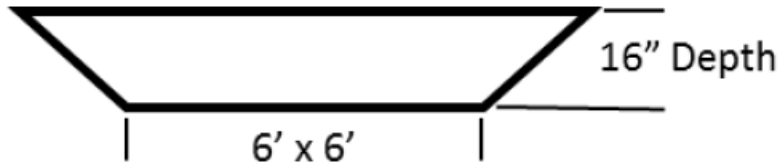
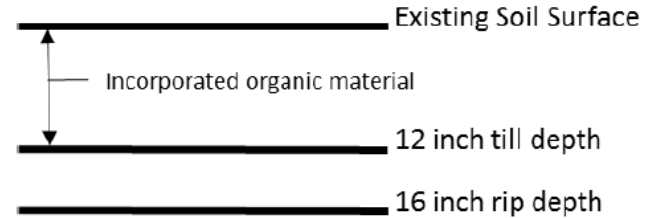
- Dense planting areas
- Scattered planting areas
- Functional live snow fence and research areas



Site Preparations and Research

Soil and bed preparation

- Tilling and excavation
- Root development and amendments
 - Biochar, compost, biosolids



Auger 3 - 36" Diameter Holes
Per Tree

Maintenance

Short term:

Years 0-2, including planting year, to be conducted by the landscape contractor

Mid-term:

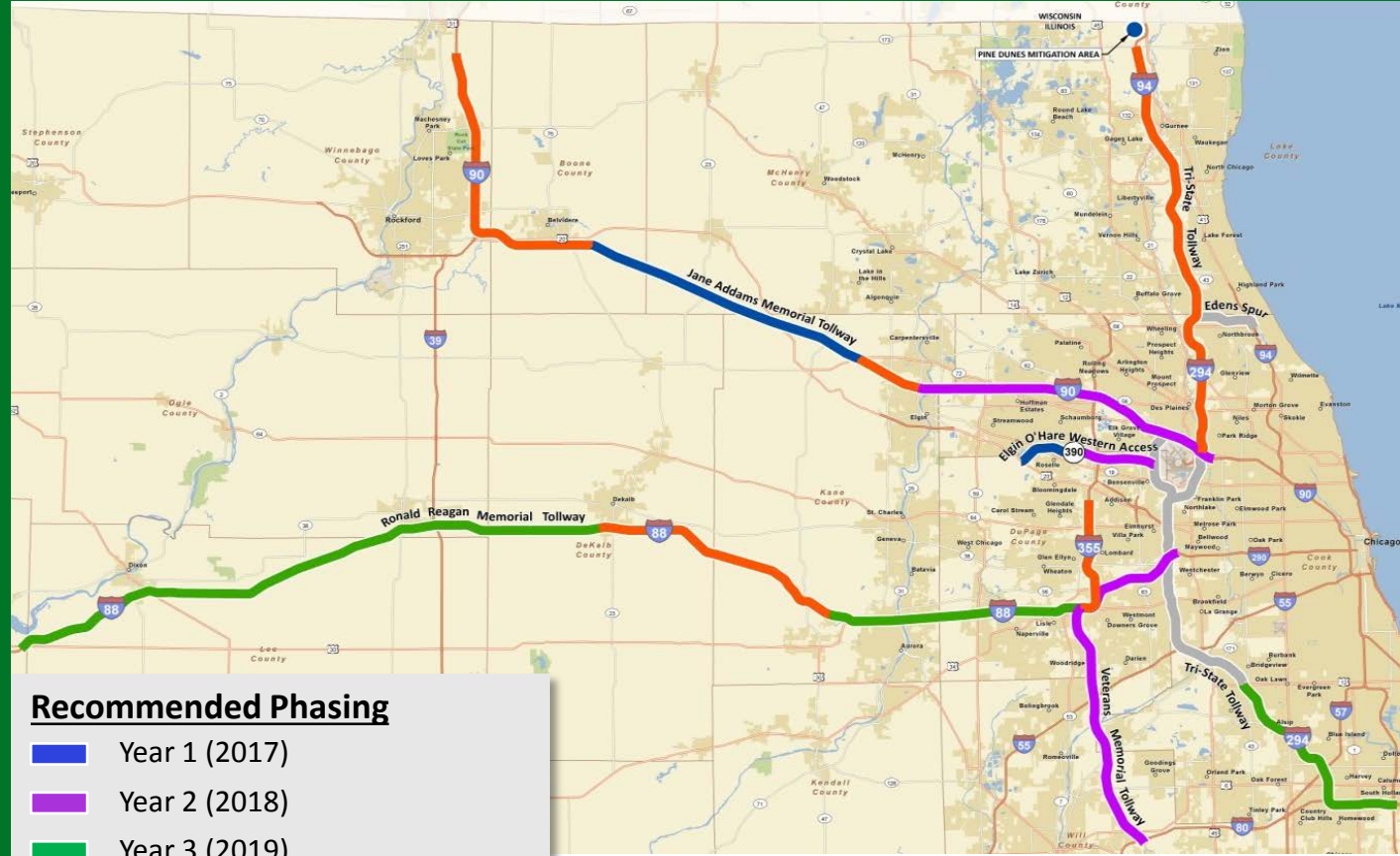
Years 3-5 to be conducted under separate maintenance contract

Ongoing:

Years 5 and beyond to be conducted by Tollway Maintenance



Phased Implementation



Recommended Phasing

- Year 1 (2017)
- Year 2 (2018)
- Year 3 (2019)
- Year 4 (2020)
- Under Planning – Exclusion Area



Planting Approach and Cost Summary

Tree sizes and availability

- 3, 5, 7 and 15 gallon container grown or equivalent (approximate 4', 5', 6' and 10' heights)
 - Program timeframe, physical size, diversity, grow rate and growth rate comparisons across species

Move Illinois tree budget

- Average cost per tree is \$363
- Budget exists within *Move Illinois* for 58,000 trees



THANK YOU

