

---

# Illinois Tollway I-290/I-88 Interchange Project at I-294

July 20, 2017

---

# Agenda



**Overview of project process and timeline**

**Summary of existing conditions**

**Solicit input regarding issues and concerns**

**Central Tri-State (I-294)  
Corridor Planning Council  
Recommendation**

*“Seek partnered solutions to  
improve the performance of  
major interchanges”*



**290 / 88  
INTERCHANGE  
PROJECT AT 294**

# Federal Planning Process

*2017-2018*



## **EVALUATE**

impacts to local communities



## **COORDINATE**

with resource agencies



## **IDENTIFY**

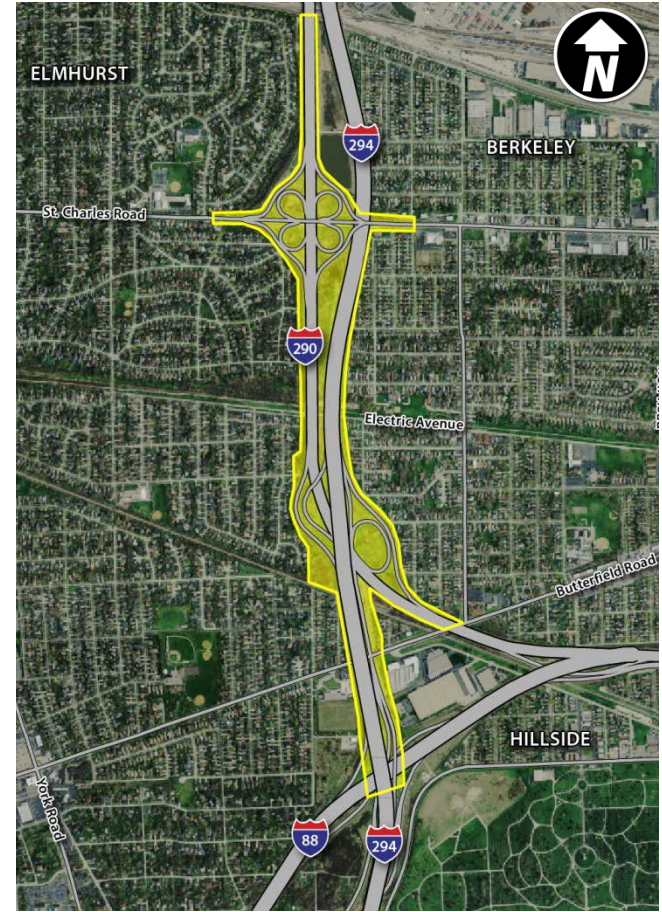
environmental impacts

# I-290/I-88 Interchange Project at I-294

## *Study Area*

Study area is from north of  
St. Charles Road to south of  
Reagan Memorial Tollway (I-88)

Adjacent municipalities are  
Elmhurst, Berkeley and Hillside



---

# Existing Conditions – Overview

**As many as 300,000 vehicles use this interchange every day**

**Backups extend for miles in both directions due to congestion**

**Delays occur at all times of the day and not just during peak hours**

**Substantial freight movement through interchange which is only expected to grow**



The Illinois Tollway  
**DRIVING  
THE FUTURE**

# Existing Conditions

## *Congestion on I-294 from I-290/I-88*



The Illinois Tollway  
**DRIVING  
THE FUTURE**

# Existing Conditions

## *Congestion on I-294 from I-290/I-88*



Presented by Illinois Tollway on July 20, 2017

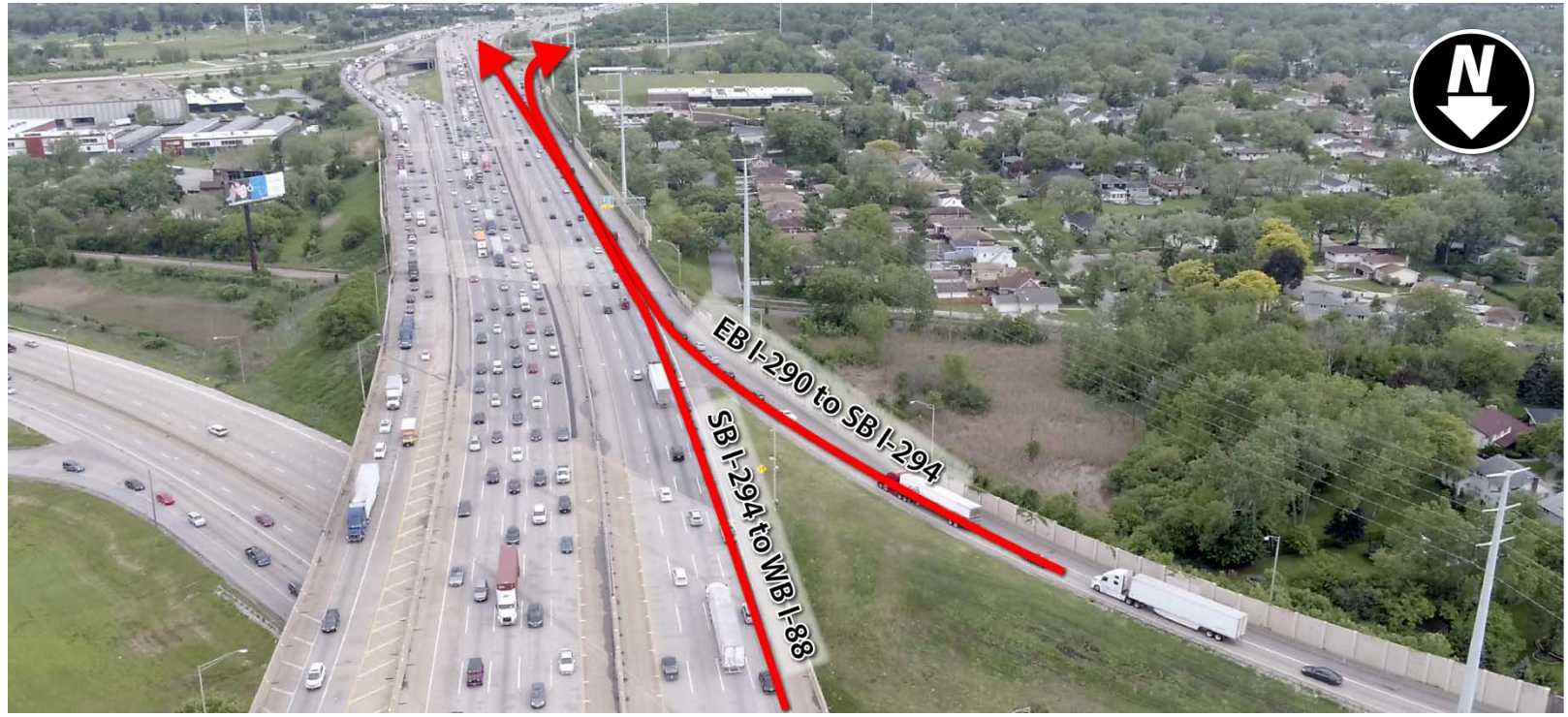


The Illinois Tollway  
**DRIVING**  
THE FUTURE



# Existing Conditions

## *Congestion at I-290/I-294 Merge*



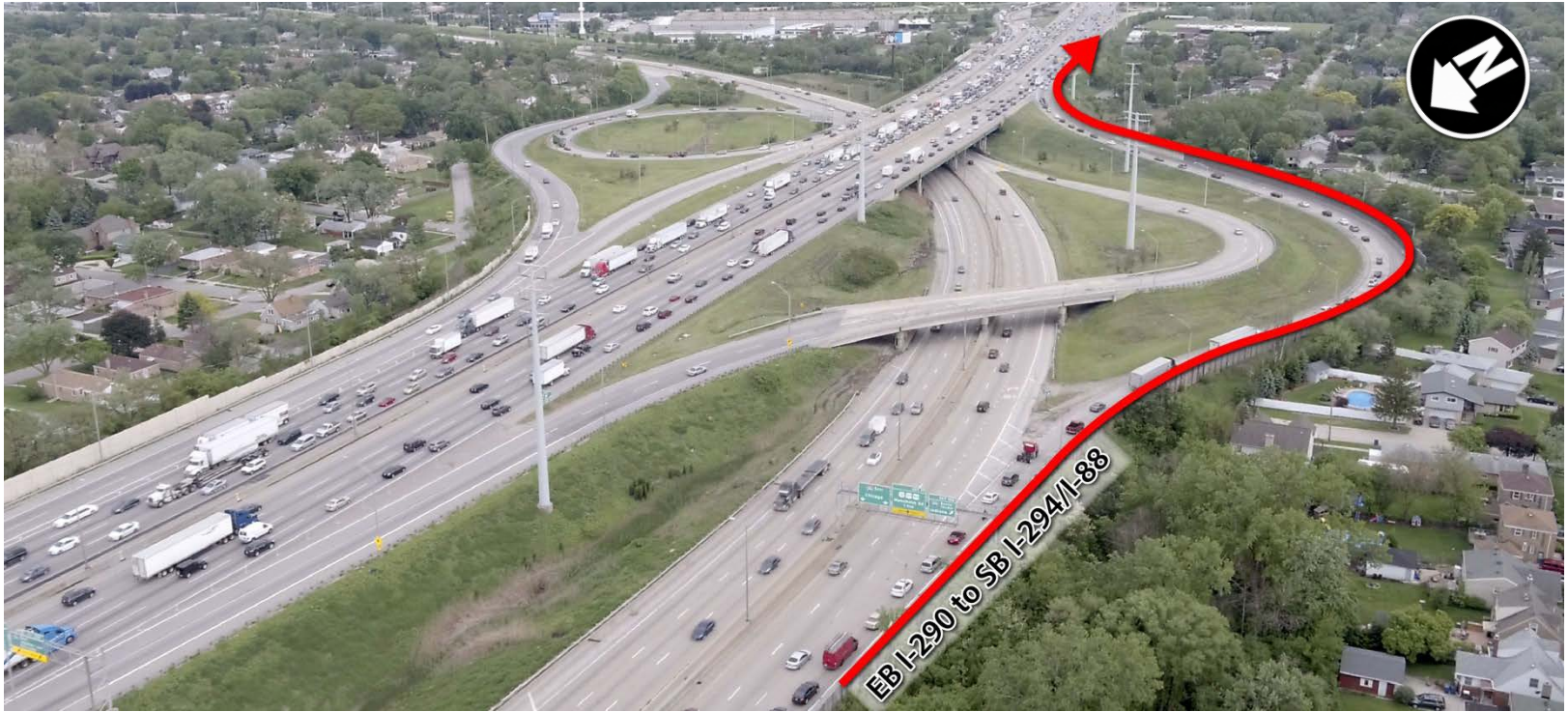
Presented by Illinois Tollway on July 20, 2017



The Illinois Tollway  
**DRIVING  
THE FUTURE**

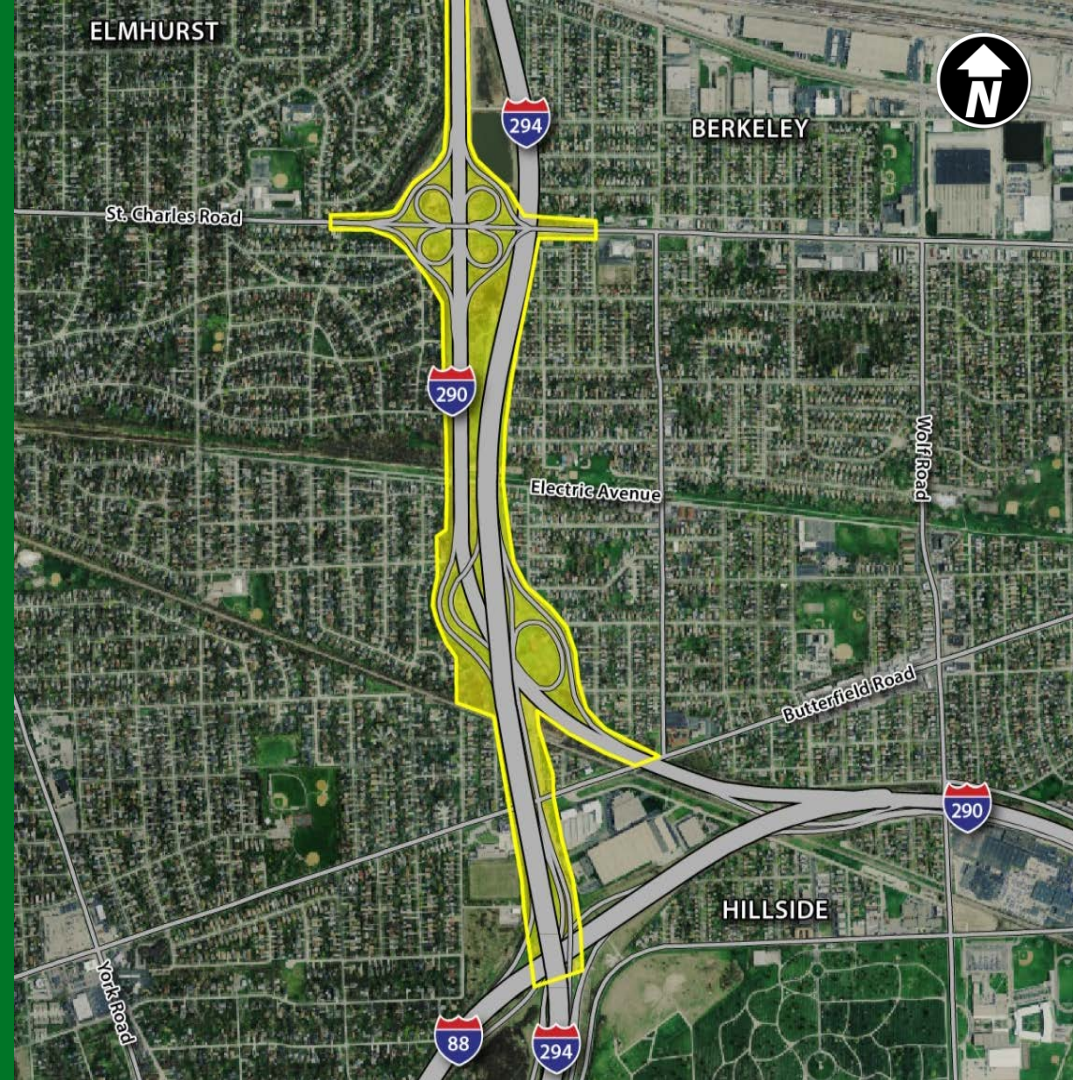
# Existing Conditions

## *Congestion on I-290 to I-294 South*

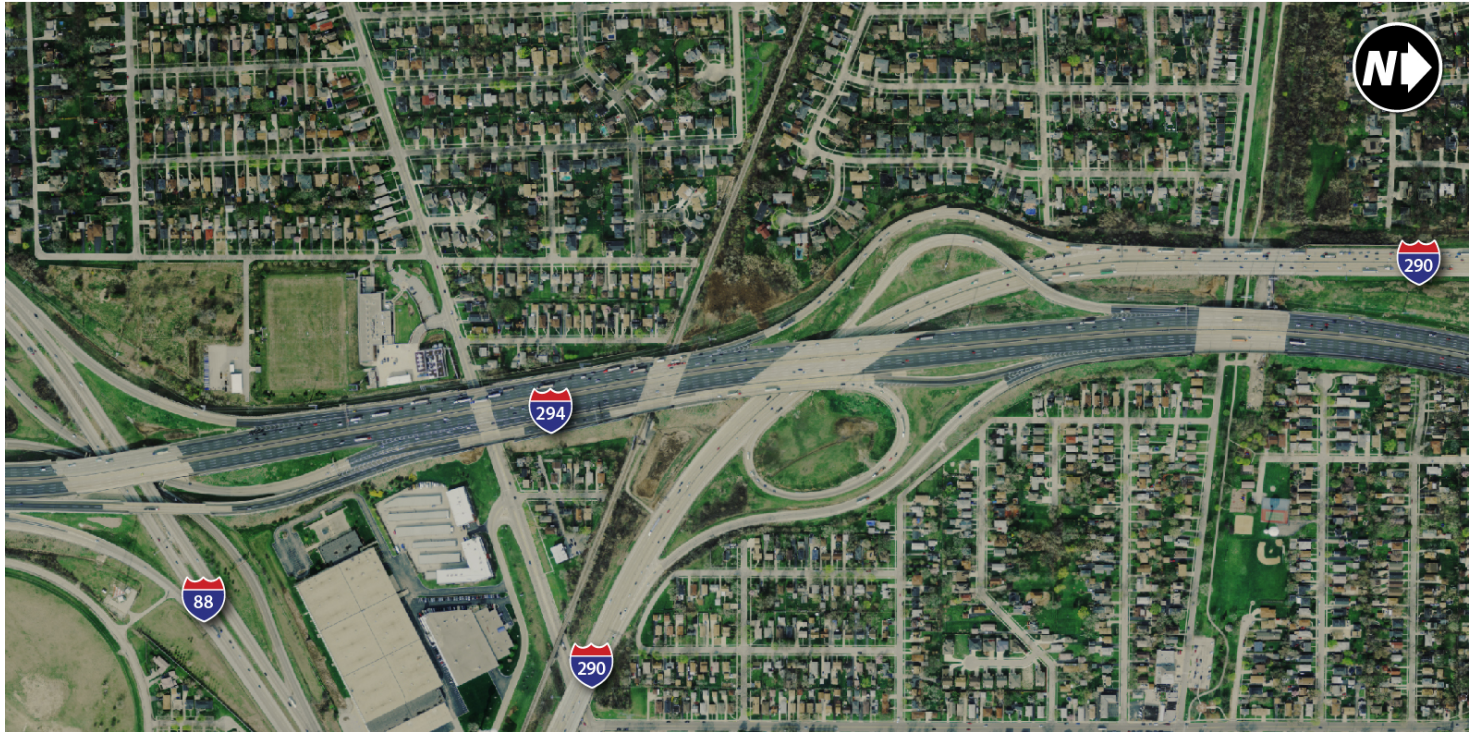


## Safety

*This project area experiences some of the highest crash rates on the entire Tollway system*



# Proposed Concept Solution



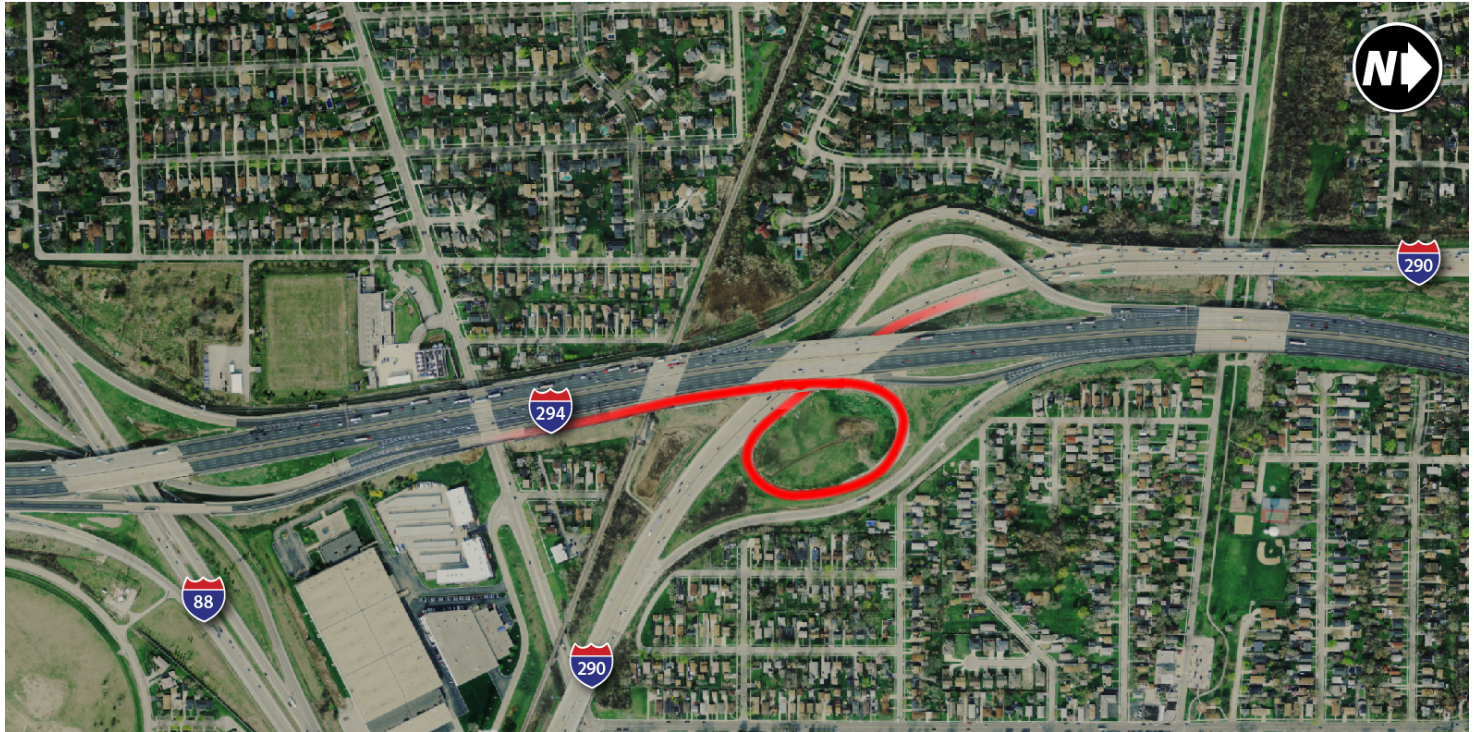
Presented by Illinois Tollway on July 20, 2017



The Illinois Tollway  
**DRIVING  
THE FUTURE**

# Proposed Concept Solution

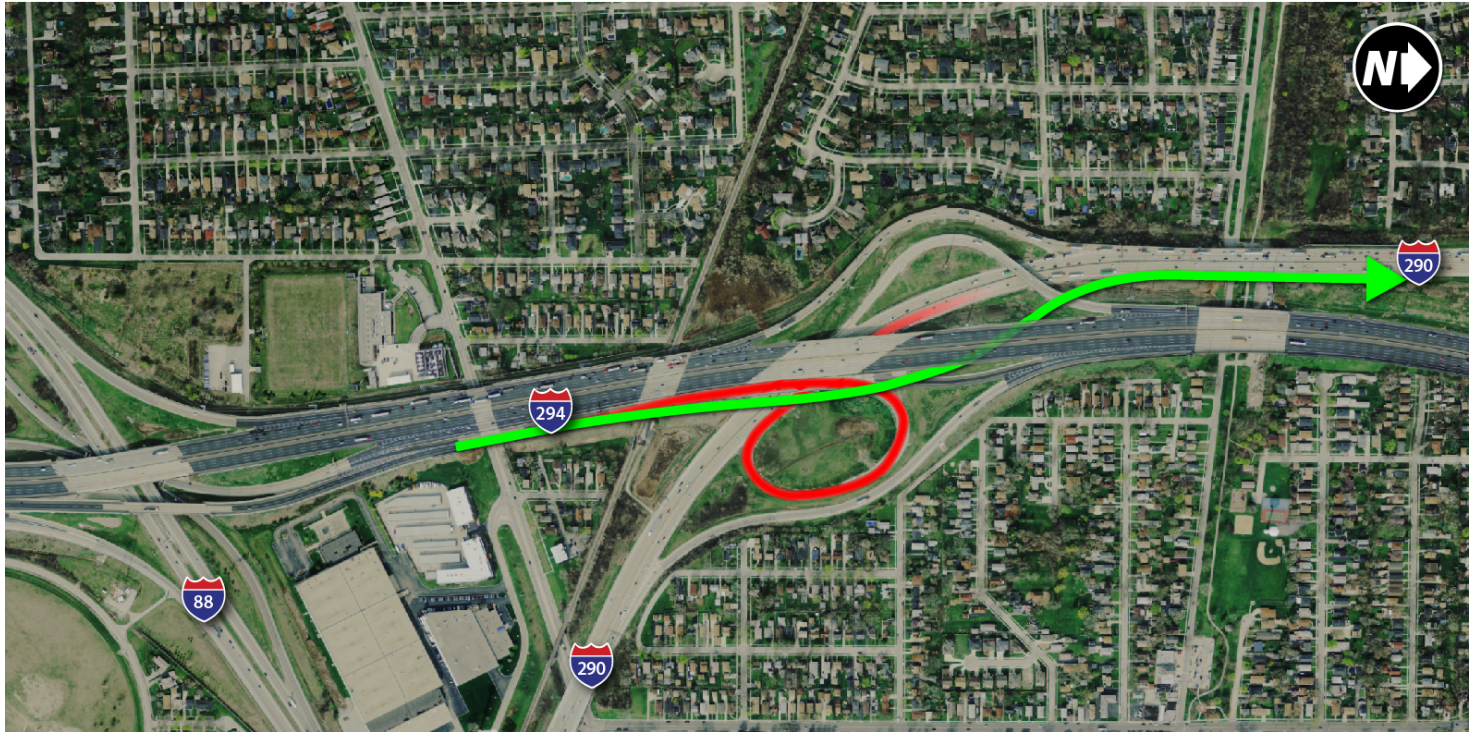
## *I-294/I-88 to I-290*



The Illinois Tollway  
**DRIVING  
THE FUTURE**

# Proposed Concept Solution

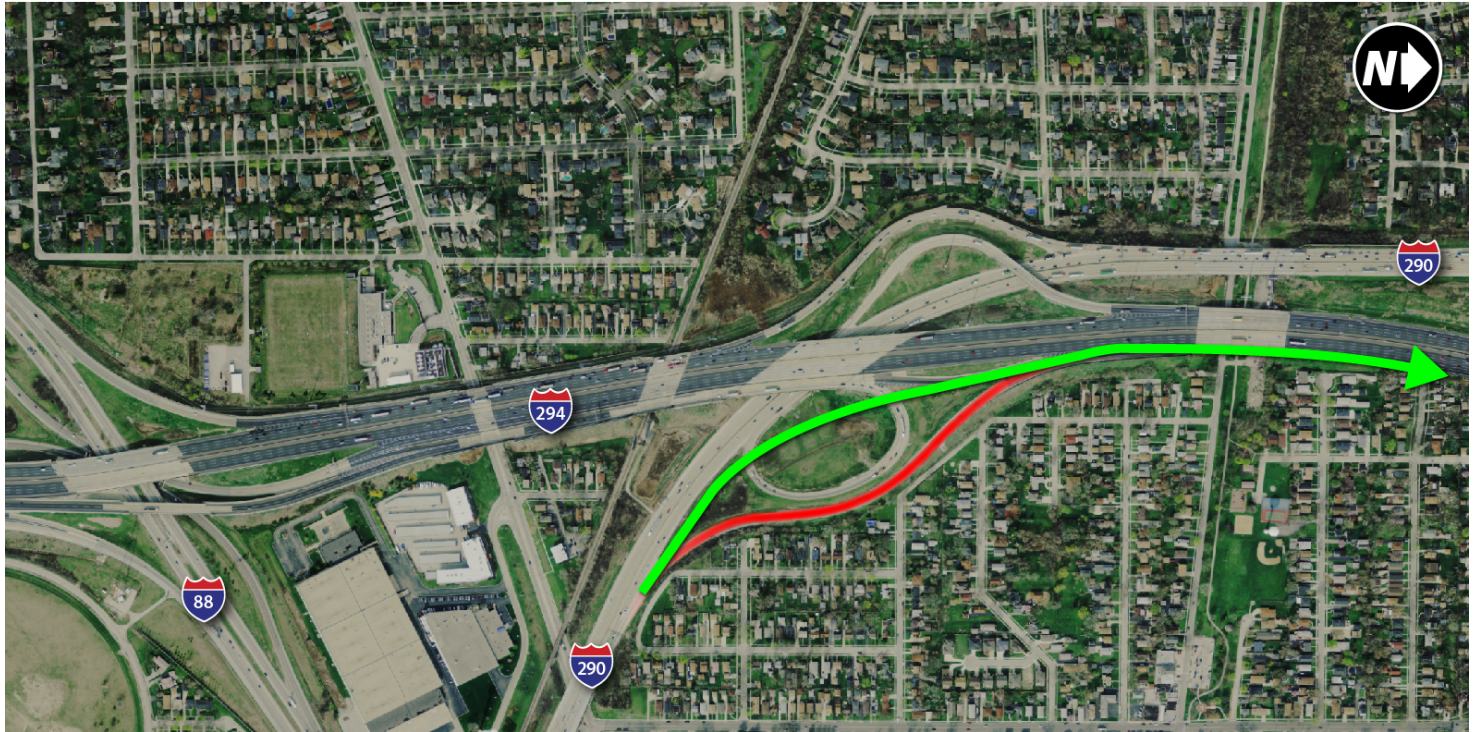
## *I-294/I-88 to I-290*



The Illinois Tollway  
**DRIVING**  
THE FUTURE

# Proposed Concept Solution

## *I-290 to I-294*



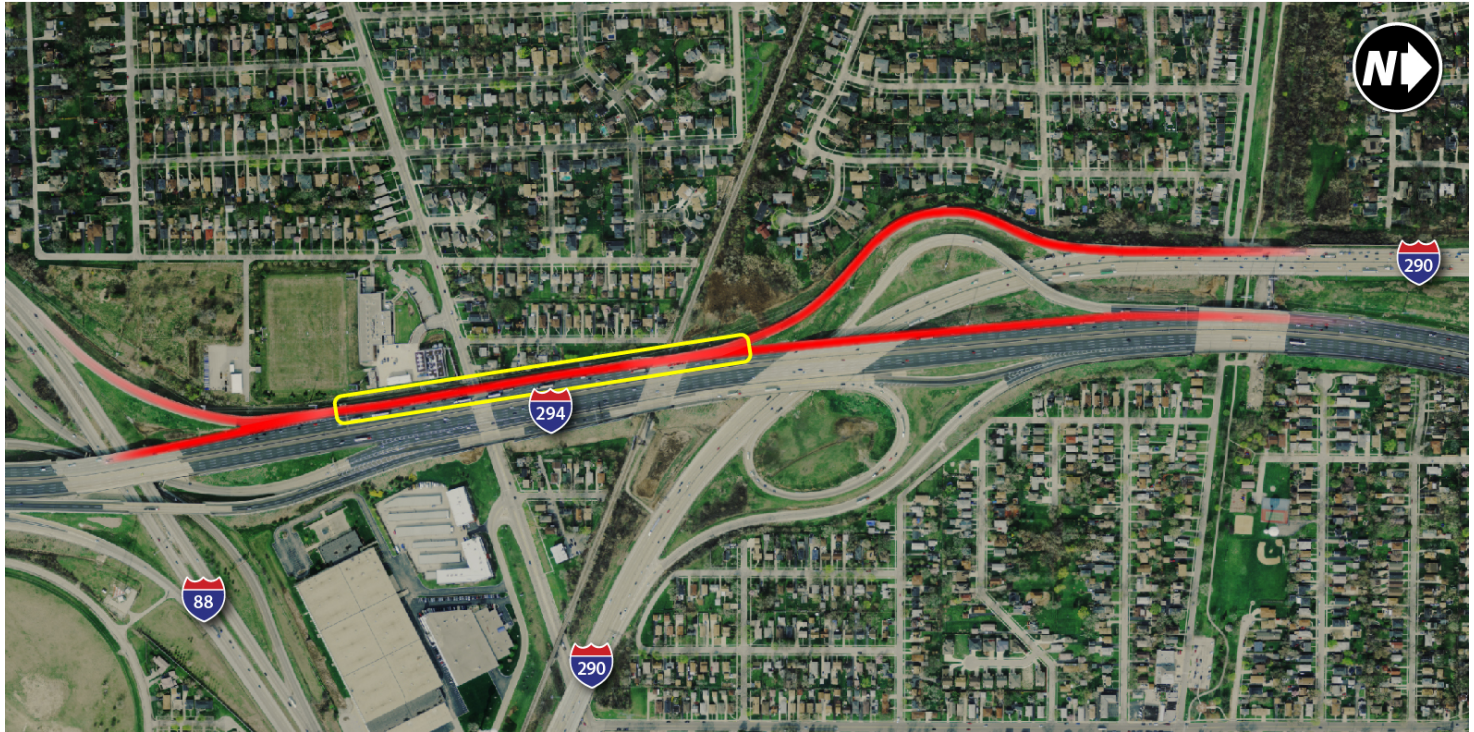
Presented by Illinois Tollway on July 20, 2017



The Illinois Tollway  
**DRIVING  
THE FUTURE**

# Proposed Concept Solution

## *I-290/I-294 Merge*

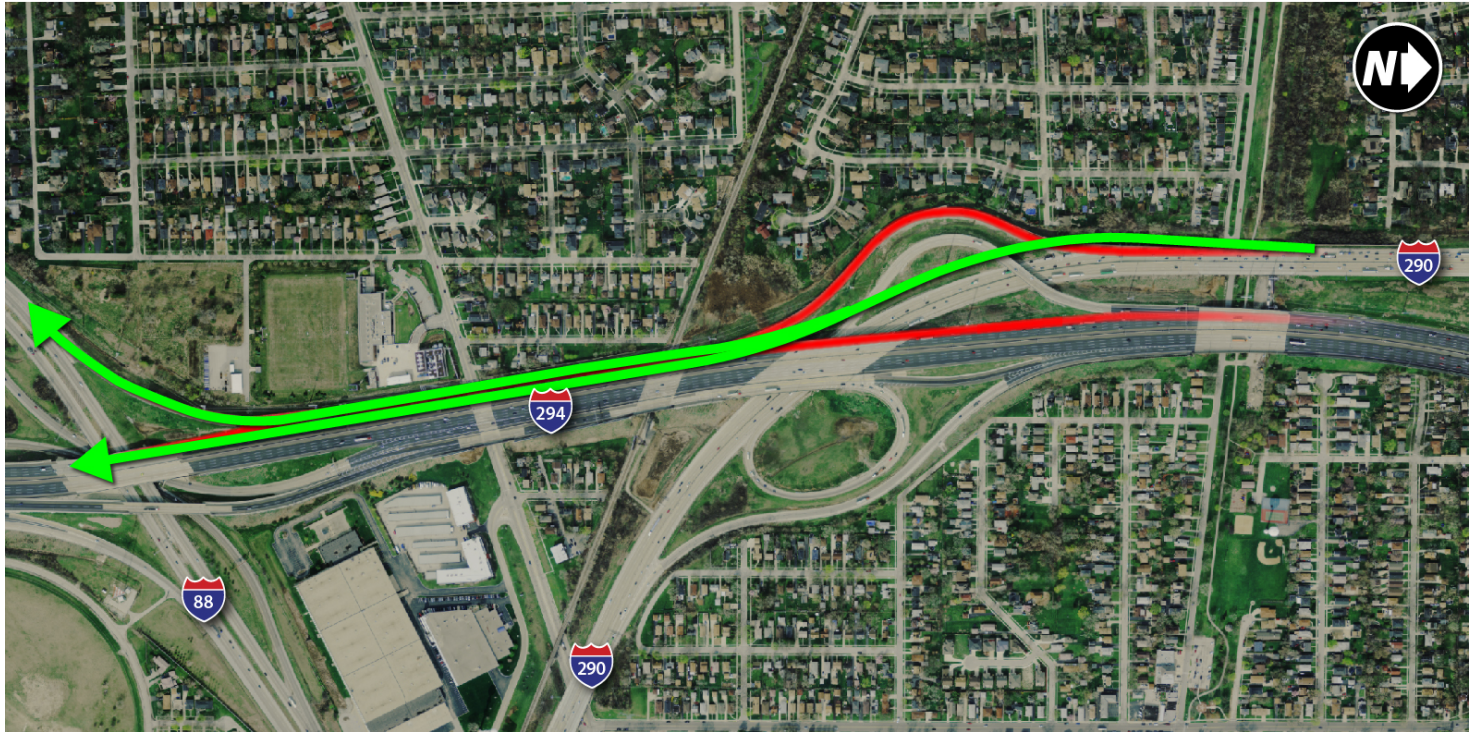


The Illinois Tollway  
**DRIVING**  
THE FUTURE



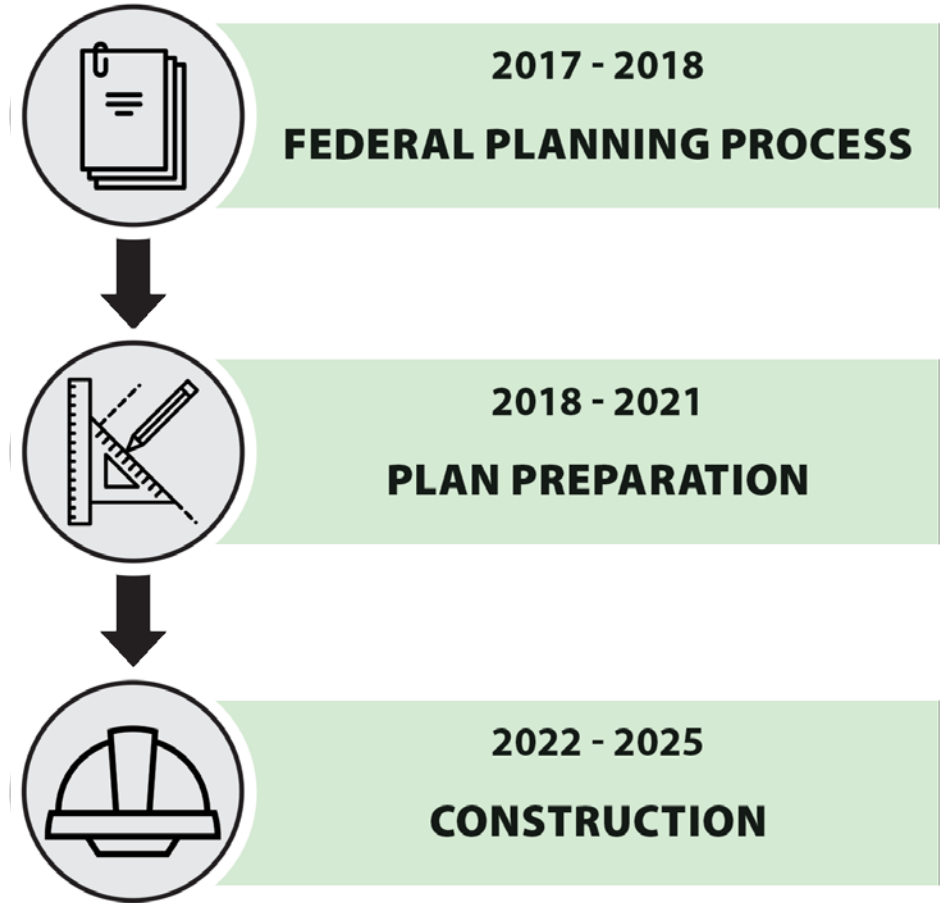
# Proposed Concept Solution

## *I-290/I-88 at I-294*



Presented by Illinois Tollway on July 20, 2017

# Project Timeline



**Get Involved  
and Stay Informed**

*[Illinoistollway.com](http://Illinoistollway.com)*

*[I-290-88info@getipass.com](mailto:I-290-88info@getipass.com)*



**290 / 88**  
**INTERCHANGE**  
**PROJECT AT 294**

---

# THANK YOU

---

**The Next Presentation Will Begin in:**  
**3**  
**Minutes**

---

**The Next Presentation Will Begin in:**  
**2**  
**Minutes**

---

**The Next Presentation Will Begin in:**  
**1**  
**Minutes**