

Move Illinois Quarterly

November 30, 2017

Agenda

Diversity matters

Job Order Contracting Facilities Program

***Move Illinois* update**

Construction opportunities

Doing business with the Tollway

Panel discussion

Networking

Diversity Matters

Agenda

Contractor diversity

Technical Assistance Program

Diversity Department initiatives

Contractor Diversity

Developing appropriate substitute for IDOT prequalification on contracts under \$5 million

- Remove barrier to participation for small and diverse firms
- Prequalification unnecessary at lower contract amounts
- Tollway performance bond requirement is accurate measure of contractor ability to perform work
- Require “statement of work experience on similar projects” document at time of bid



The Illinois Tollway
DRIVING
THE FUTURE

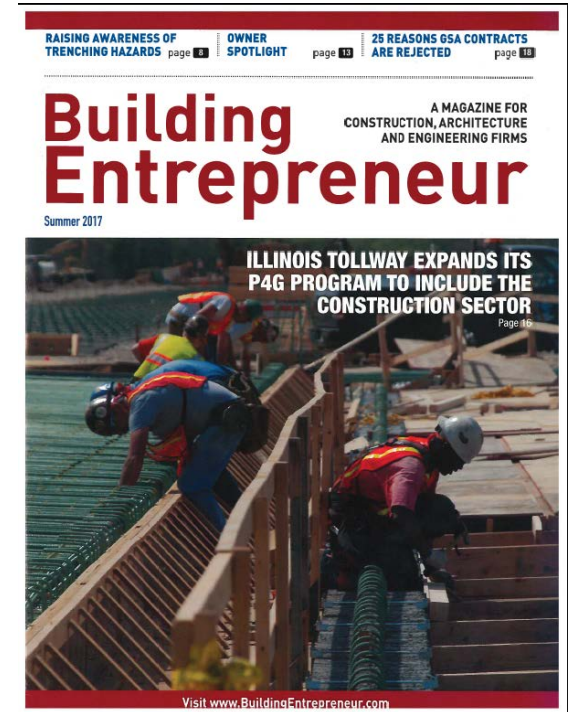
Partnering for Growth (P4G) Program

P4G – Construction

- 15 prime and sub contractors screened for construction program

P4G – Professional Engineering Services

- Can be mentored in same area of assistance more than three times
- Provide explanation supporting need for additional mentoring
- Rule in place to protect the integrity of the P4G Program, provide opportunities for more firms



Small Business Initiative

Provides prime contracting opportunities for small businesses

Attracts new firms to Tollway projects

Increases diversity

- Half of all bids come from firms that are also diverse or veteran-owned

Since Small Business Initiative began in 2013

- Awarded 45 small business set-aside contracts totaling \$47.9 million
- 29 unique small contractors awarded prime contracts

At least 15 set-aside contracts expected to be awarded in 2018



Technical Assistance Program

- All locations open throughout Northern Illinois
- More than 100 clients served this year
- More than 300 clients served since 2013
- More than 30 client firms have performed on Tollway contracts, including six firms awarded Small Business Set-Aside prime contracts



Inner-City Underwriting Agency Inc.
312-341-9080 * inner-city.net
Insurance * Benefits * Surety * Risk Management



Illinois Black Chamber
Of Commerce



The Illinois Tollway
**DRIVING
THE FUTURE**

Workforce Development Initiatives

Earned Credit Program

- More than 300 ECP hires and \$15 million in earned wages since program inception
- Reviewing marketing strategies to increase contractor and source agency participation
- Raising ECP bid credit cap for contractors and revising incentives to encourage hiring

Workforce Development RFP

- In final review stage
- Anticipate advertising by end of year



Diversity Video

https://youtu.be/fTGP_WsQQo



The Illinois Tollway

DRIVING
THE FUTURE

Job Order Contracting (JOC) Facilities Program

JOC Facilities Program Overview

Allows quick building repairs through established procurement system

Projects assigned to eight pre-approved contractors

Assignments based on project scope, prior performance

Minimum 25 percent Business Enterprise Program and 3 percent veteran-owned small business participation for all projects



Tollway Facilities

More than 180 facilities, including

- Tollway headquarters
- Central warehouse/sign shop
- Disaster recovery building
- Central support complex
- Toll plazas
- Maintenance sites



JOC Contractors



**Old Veteran
Construction, Inc.**
M.B.E. Certified



Wight



The Illinois Tollway
**DRIVING
THE FUTURE**

Performance To Date

Business Enterprise Program participation 37 percent

Veteran participation 9 percent

2016

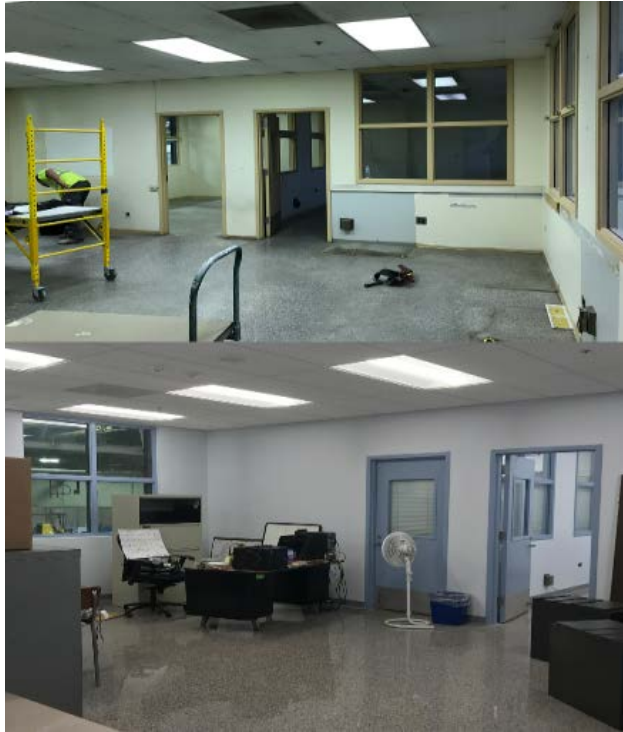
- 20 job orders
- \$1.28 million

2017

- 129 job orders
- \$7.5 million



Project Photos – Before And After



2018 Projections

124 job orders anticipated

Nearly \$5.8 million in work programmed

Types of work, including

- Office remodeling
- Mechanical equipment, rooftop unit and overhead door replacements
- Electrical, plumbing and exhaust system upgrades and repairs
- Fiber optic installation and termination
- Fire protection maintenance/relocation
- Mechanical piping systems
- Roofing, fencing and landscaping



Upcoming Projects

Illinois State Tollway JOC Facilities Projects				
Project Number	Project Name/ Location	JOC Contractor	Contact Name	Contact Number
IL-15-0081A-FHP-17-008.00	Re-Carpet Offices Tollway Headquarters Downers Grove	FH Paschen, SN Nielsen & Assoc.	Dan Zivilik	779-444-3474
IL-15-0081C-AGC-17-001.00	Install new trench drain in front of truck garage M-11 DeKalb	AGAE Contractors Inc.	Robert Kos	773-777-2240
IL-15-0081C-AGC-17-017.00	Find source of water entering ComEd duck bank and stop it Tollway Headquarters Downers Grove	AGAE Contractors Inc.	Robert Kos	773-777-2240
IL-15-0081C-AGC-17-018.00	Sound system Improvements Tollway Headquarters Downers Grove	AGAE Contractors Inc.	Robert Kos	773-777-2240
IL-15-0081C-AGC-17-020.00	Board Room Roof and Drywall Repair Tollway Headquarters Downers Grove	AGAE Contractors Inc.	Robert Kos	773-777-2240
IL-15-0081F-ANC-17-014.00	Evaluate Building pneumatic system Tollway Headquarters Downers Grove	Anchor Mechanical	Gunther Schumar	
IL-15-0081G-MCD-17-010.00	Clean Skylight Exterior Glass Central Administration Building Downers Grove	McDonagh Demolition	Paul Dadi	
IL-15-0081G-MCD-17-011.00	Replace overhead roof in Loading Dock Central Administration Building Downers Grove	McDonagh Demolition	Paul Dadi	
	Refurbish existing passenger elevator			

Visit illinoistollway.com

- Doing Business
- Construction and Engineering Overview
- Job Order Contracting

Advice For Subcontractors

Get to know JOC prime contractors

Emphasize your areas of expertise

Track upcoming work weekly



Move Illinois Opportunities

Charles Zivich Group, LLC Assoc.
 Ouchicago CHD Inc. Cettinginc.
 Chicago City of Real Estate Corp
 At C PAV Inc. of Springfield, Company
 Chicago AIAW To Aken, Incorporated
 Garza AIA Engineering, LTD, LLC
 Gate City of AASIL Inc. Associates, Inc.
 Christy Board Construction, Inc. Inc. Ltd.
 Civil Construction Engineering, Inc. Incorporated
 Strategic Engineering, Inc. Inc. Inc.
 Abel Construction Services Group, LLC
 Classen Applied Construction, P.C.
 Global Building Corporation
 Global Construction Group
 Advanced Welding and Equipment, Inc.
 Great Lakes Commercial Services, Inc.
 Great Lakes Steel Mill, Inc.
 Coburn Construction Services Co.
 T.Y. Lore Construction, Inc. Inc. Corp. Inc.
 Taylor Construction, Inc. Inc. Inc.
 Alfred Beresch Company
 Alpin Construction Services, LLC
 Construction Services, Inc. Inc. Inc.
 Tom Wittig Construction, Inc. Inc. Inc.
 American Contracting, Inc. Inc. Inc.

American Demolition Corporation
 American Fire Contingents
 American Engineering, Inc. Inc.
 American Landscapers Association
 American Surveying & Engineering, P.C.
 American Veterinary Services, LLC
 MHS Mechanical Engineering, Inc.
 FEA Systems, Inc. Inc. Inc.
 Range Construction, LLC
 HEB Engineering Construction, Inc. Inc.
 Apex Construction, Inc. Inc. Inc.
 Regal Digital Safety Analysis, Inc.
 Redell APS Consulting, Inc. Inc. Inc.
 Aquatic Engineering, LLC
 TruArch Construction, Inc. Inc. Inc.
 M Design & Construction, Inc. Inc. Inc.
 DFI Architects & Engineers, Inc. Inc. Inc.
 Arturo Construction, Inc. Inc. Inc.
 Midland Zila Architects & Engineers, Inc. Inc. Inc.
 Road Masters, Inc. Inc. Inc.
 RoadMaster Painting & Engineers
 Rock Solid Engineering & Construction, Inc. Inc. Inc.
 Independent Landscaping, Inc. Inc. Inc.
 Uvalde Environmental, LLC
 Milhouse Building & Safety, Inc. Inc. Inc.

Millenfield Building & Contracting, Inc. Inc. Inc.
 Ruffalo Building & Contracting, Inc. Inc. Inc.
 Inland Construction & Development, Inc. Inc. Inc.
 Institute of Business Solutions, Inc. Inc. Inc.
 Beach Pump & Well Services, Inc. Inc. Inc.
 Inter-Engineering & Stabilization, Inc. Inc. Inc.
 Behdken Mechanical Engineering, Inc. Inc. Inc.
 Env Benchmark Construction, Inc. Inc. Inc.
 Enviro-Benchmark Technology & Solutions
 Schradl and Associates, Inc. Inc. Inc.
 NB Environmental Services, Inc. Inc. Inc.
 Nollinger & Associates, Inc. Inc. Inc.
 Darton Building & Contracting, Inc. Inc. Inc.
 NB Construction & Contracting, Inc. Inc. Inc.
 E-Serve Building & Contracting, Inc. Inc. Inc.
 Vitars & Vitars Construction, Inc. Inc. Inc.
 Shanley Construction, Inc. Inc. Inc.
 O'Brien Construction, Inc. Inc. Inc.
 John B. Construction, Inc. Inc. Inc.
 F. Bircho Construction, Inc. Inc. Inc.
 Craig B. Gardner, Inc. Inc. Inc.
 On Call Utility Contractors, Inc. Inc. Inc.
 Christerson Construction, Inc. Inc. Inc.
 Original Construction, Inc. Inc. Inc.
 K&G Construction, Inc. Inc. Inc.



Illinois Route 390 Video

<https://youtu.be/LKeKlw4QJqM>

Connecting Communities And Improving Mobility



2012

2014

2016

2018

2020

2022

2024

2026



2018 Construction


Reagan Memorial Tollway (I-88)

I-490 Tollway and I-490 Interchange

Veterans Memorial Tollway (I-355)

Tri-State Tollway (I-94/I-294/I-80)

Systemwide



CONSTRUCTION CONTRACT
BID LETTING SCHEDULE
(Sorted by Bid-Opening)

Located on Illinois Tollway Website under Doing Business www.illinoistollway.com

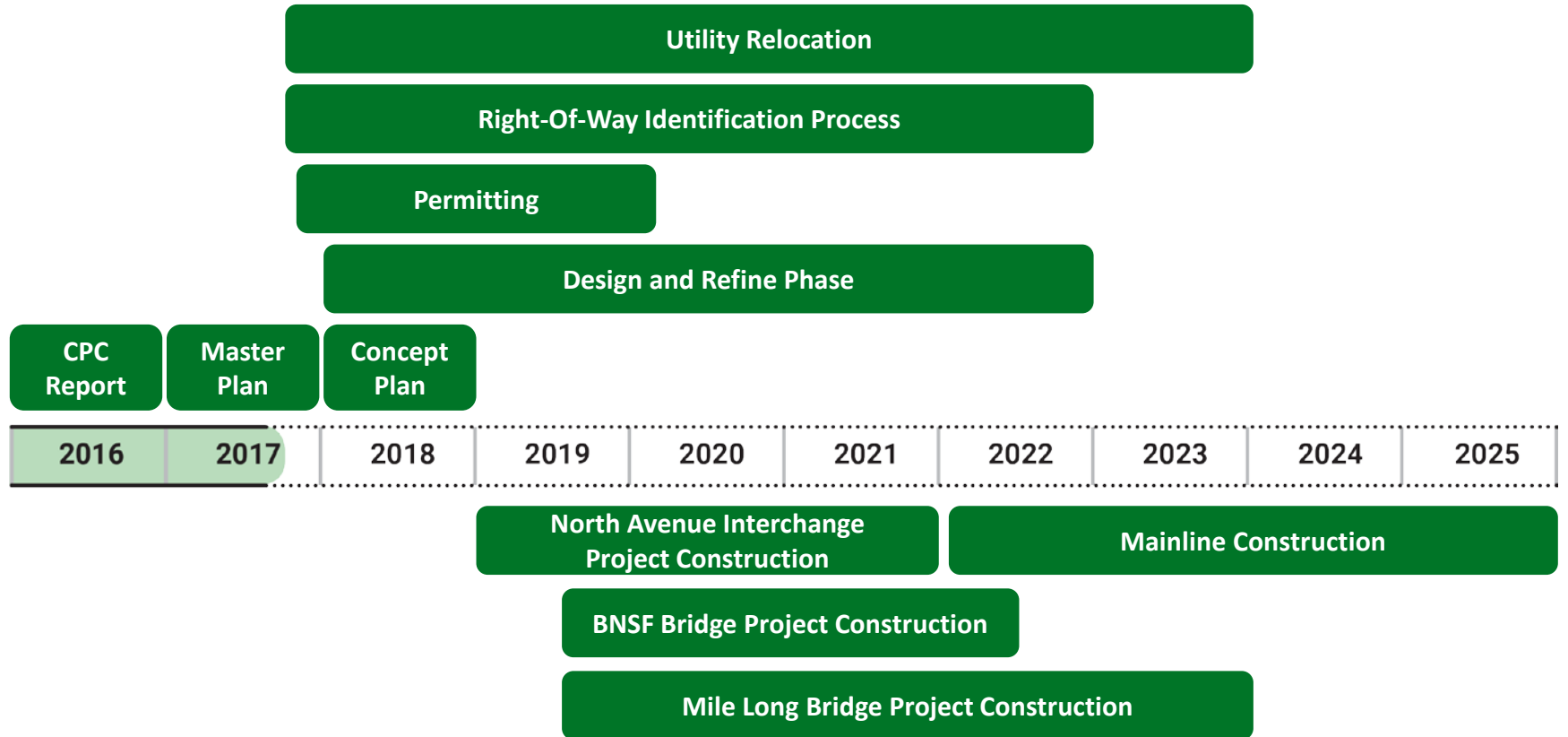
Information in this document is subject to change.

ROUTE	TYPE OF WORK	PROJECT DESCRIPTION	PROJECT NUMBER	ADVERTISED DATE	BID OPENING DATE	ESTIMATED BIDDING APPROVAL DATE	ESTIMATED NOTICE TO PROCEED DATE	CONTRACT COMPLETION DATE	DOT MAINTENANCE PERMIT
88	Fiber Optic	888 - Fiber Optic Construction Upper Regener	4325	18-Jul-17	19-Aug-17	28-Sep-17	9-Nov-17	9-Nov-18	U
88	Reconstruction	Recreation Reconstruction York Rd to I-290	4116	2-Aug-17	7-Sep-17	28-Sep-17	9-Nov-17	18-Sep-18	C
88	Fiber Optic	Fiber Optic Removal - East	4327	22-Aug-17	19-Sep-17	28-Oct-17	8-Jan-18	18-Nov-18	USA
88	DOT	IDOT Bid Letting			22-Sep-17	A			
355	Tree Planting	I-355 Landscape Planting Improvement MP 2.00 to 2.25	4328	31-Aug-17	3-Oct-17	28-Oct-17	22-Dec-17	28-Jul-22	USA
355	Tree Planting	I-355 Landscape Planting Improvement MP 2.25 to 11.45	4329	7-Sep-17	19-Oct-17	28-Oct-17	22-Dec-17	28-Jul-22	USA
80	Landscaping	Blowdown Improvements - West	4334	3-Oct-17	31-Oct-17	28-Nov-17	5-Feb-18	8-Dec-19	USA
355	Tree Planting	I-355 Landscape Planting Improvement MP 12.2 to 19.85	4330	15-Sep-17	7-Nov-17	21-Dec-17	15-Feb-18	28-Jul-22	USA
88	Fencing	Systemwide Fencing and Site Improvements (I-88 & I-294 Interchange)	4337	5-Oct-17	14-Nov-17	21-Dec-17	15-Feb-18	28-Oct-18	USA
88	DOT	IDOT Bid Letting			17-Nov-17	A			
88	CCTV	CCTV Camera Enhancements I-88 and I-294	4343	24-Nov-17	30-Nov-17	21-Dec-17	19-Feb-18	28-Sep-18	USA
88	Preservation	I-355 Pavement and Structural Preservation MP 0.0 to 12.3	4340	28-Dec-17	30-Nov-17	21-Dec-17	26-Feb-18	31-Aug-18	USA
80	Landscaping	Blowdown Improvements - East	4335	26-Dec-17	5-Dec-17	25-Jan-18	22-Mar-18	13-Oct-19	USA
294	Bridge/Pavement	Pavement and Bridge Repair, and Repair on I-94 Rapid R&R to York City Rd MP 1.0 to MP 21.85	4341	31-Dec-17	5-Dec-17	21-Dec-17	19-Feb-18	28-Aug-18	A

Visit illinoistollway.com/doing-business/construction-engineering



Central Tri-State Tollway (I-294) Project Timeline



Construction Bid-Letting Process

illinoistollway.com/doing-business/construction-engineering

Steps in the Process	Information/Assistance Available
<ul style="list-style-type: none">• Identify upcoming projects• Seek plans	Bid-letting schedule Online Plan Room
<ul style="list-style-type: none">• Compile bid• Submit bid (to prime or Tollway)	<i>Navigating the Tollway Bid Process</i> educational videos
<ul style="list-style-type: none">• Bid opening/apparent low bidder• Review paperwork	Public bid opening (webcast)
<ul style="list-style-type: none">• Tollway Board approval• Notice to Proceed	

Panel Discussion

THANK YOU