



FOR IMMEDIATE RELEASE

June 28, 2018

**LONG-TERM BRIDGE LANE CLOSURES SCHEDULED TO BEGIN IN JULY
OVER REAGAN MEMORIAL TOLLWAY (I-88) IN DEKALB, OGLE COUNTIES**

Dauberman Road Bridge in Kane County also scheduled to close for two months beginning in June

DOWNERS GROVE, IL – The Illinois Tollway is scheduled to begin repair work on local crossroad bridges carrying traffic over the Reagan Memorial Tollway (I-88) including the Dauberman Road Bridge in Kane County the Hinckley Road, Shabbona Road and Tower Road Bridges in DeKalb County; and Locust Road and Main Street Bridges in Ogle County.

Electronic message signs and construction signage will be put in place in advance to alert drivers to the start of construction and closures. When possible, the Tollway will stage construction so bridges can remain open to traffic during repairs. However, the full closure of some bridges is necessary because the local crossroad bridges over I-88 are too narrow to accommodate traffic while safely completing the work.

On Friday, June 29, work is scheduled to begin at the Dauberman Road Bridge. The bridge will close to traffic for two months and a detour will be posted directing traffic to use Perry Road, County Line Road and Keslinger Road.

The week of July 9, the Locust Road Bridge is scheduled to close for a month. No detour will be posted.

In mid-July, work is scheduled to begin on the Shabbona Road and Hinkley Road Bridges, as well as the Main Street Bridge in Rochelle.

- At Shabbona Road, bridge work is scheduled to continue through August. The bridge will remain open; however, all traffic will be limited to a single lane over I-88 with traffic in both directions controlled by flaggers on a daily basis during construction.
- At the Hinckley Road Bridge, a full closure is scheduled to last for a month. No detour will be posted.
- At Main Street, the bridge is scheduled to close for a month. A detour will be posted.

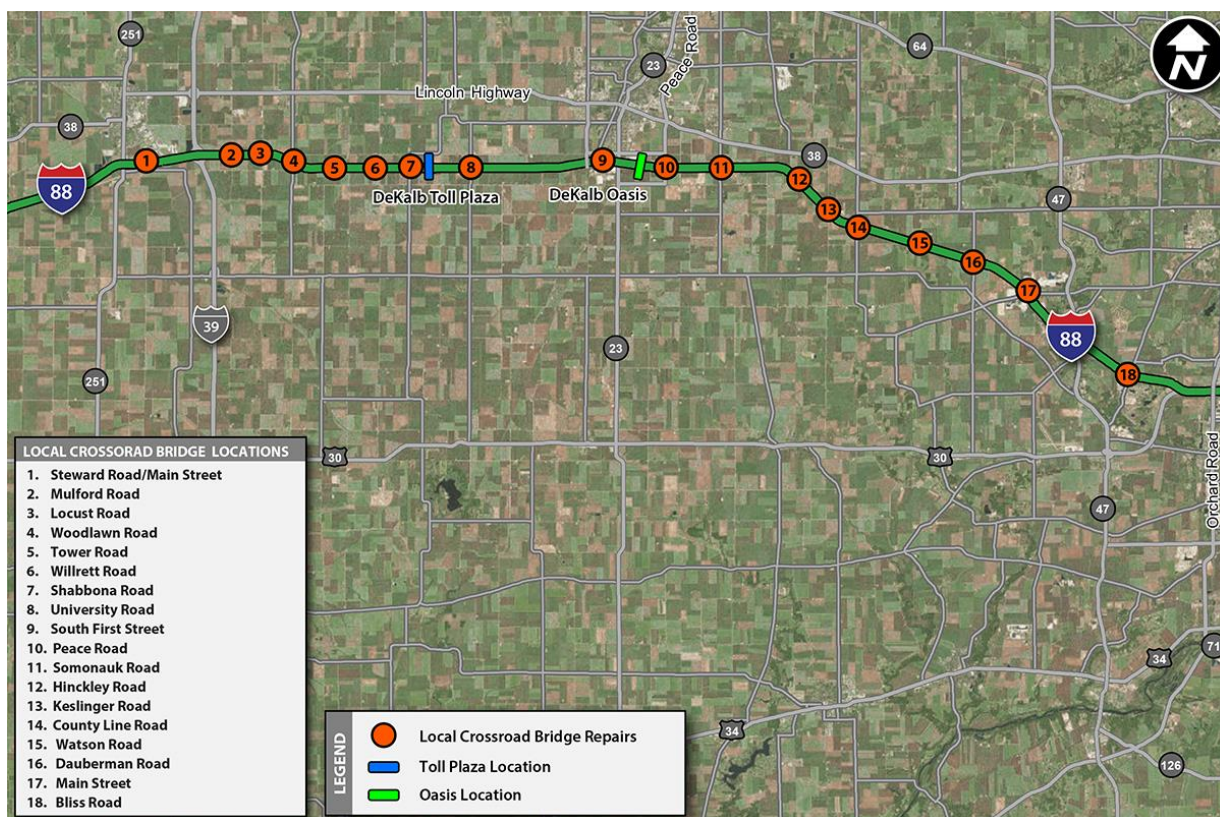
In late July, Tower Road Bridge is also scheduled to close for a month. No detour will be posted.

The Woodlawn Road and Watson Road Bridges in DeKalb County, which were closed for repairs in May, have reopened. Work at the Main Street Bridge in Elburn, which was underway since early June, is also complete.

In 2018, the Illinois Tollway is repairing 17 local crossroad bridges carrying traffic over I-88, between Illinois Route 251 near Rochelle and Illinois Route 56 near Sugar Grove. Bridge work and closures are being staggered so that adjacent bridges are not under construction at the same time and can be used as alternative routes.

In most locations, local crossroad bridge improvements will include pavement patching, bridge deck rehabilitation, bridge joint replacement and repairs on bridge beams, piers and girders.

Bridges scheduled for repairs include: Steward Road/Main Street (Rochelle), Mulford Road, Locust Road, Woodlawn Road, Tower Road, Willrett Road, Shabbona Road, University Road, South First Street, Peace Road, Somonauk Road, Hinckley Road, Keslinger Road, County Line Road, Watson Road, Dauberman Road, Main Street (Kane County) and Bliss Road.



All work is being coordinated with the Illinois Department of Transportation, City of DeKalb, DeKalb County, Kane County, Ogle County, Dement Township, Malta Township, DeKalb Township, City of Rochelle, Pierce Township, Kaneville Township, Village of Sugar Grove and Cortland Township, as well as local fire and police departments.

Maps and construction information about I-88 local crossroad bridge construction is available on the Tollway's website at illinoistollway.com via the Interactive Tollway Map and under "Projects Overview" in the Explore Projects section.

The local crossroad bridges are being repaired to extend the life of the structures and the repairs are being done in coordination with the of the resurfacing of I-88, between Illinois Route 251 in Rochelle and Illinois Route 56 in Sugar Grove. The work is funded by the Illinois Tollway's 15-year, \$14 billion capital program, *Move Illinois: The Illinois Tollway Driving the Future*.

Work Zone Safety

The Illinois Tollway is committed to ensuring that the Reagan Memorial Tollway (I-88) and local crossroads remain safe for both drivers and workers during construction, which is part of the agency's overall commitment to roadway safety.

Work zone speed limits are in effect in all construction zones 24/7 and drivers should continue to watch for changing traffic patterns and use caution, especially when workers are present.

In addition, the Illinois Tollway reminds motorists that the “Move Over Law” requires motorists to change lanes or to slow down and proceed with caution when passing any vehicle on the side of the road with hazard lights activated. If you see flashing lights ahead, please move over or slow down.

Illinois State Police have zero tolerance for drivers speeding in work zones or failure to comply with the Move Over Law.

The minimum penalty for speeding in a work zone is \$375. Posted signs advise drivers of a \$10,000 fine and a 14-year jail sentence for hitting a roadway worker. Penalties for failure to slow down or move over for a vehicle on the shoulder with flashing lights includes up to a \$10,000 fine, 2-year suspension of driving privileges and jail time, in extreme cases.

Getting Tollway Construction Information

The Illinois Tollway has a variety of ways customers can get the latest travel information, including:

- illinoistollway.com – Interactive Tollway Map for construction and live roadway images.
- [Daily construction alerts](#) – Daily and long-term lane and shoulder closure schedules.
- Travelmidwest.com – Real-time travel times.
- Twitter.com – Real-time roadway incident information at Tollway Trip 90, Tollway Trip 88, Tollway Trip 355, Tollway Trip 94/294 and Tollway Trip 390.

About Move Illinois

The Illinois Tollway’s 15-year, \$14 billion capital program, *Move Illinois: The Illinois Tollway Driving the Future*, is improving mobility, relieving congestion, reducing pollution, creating as many as 120,000 jobs and linking economies throughout the region. The first six years of *Move Illinois* are on schedule and within budget, delivering the new Illinois Route 390 Tollway and a rebuilt and widened Jane Addams Memorial Tollway (I-90) with its new SmartRoad corridor, as well as opening a new interchange connecting the Tri-State Tollway (I-294) to I-57. Progress continues on projects addressing the remaining needs of the existing Tollway system, delivering the new I-490 Tollway Project and reconstruction of the Central Tri-State Tollway (I-294) and planning for emerging projects.

About the Illinois Tollway

The Illinois Tollway is a user-fee system that receives no state or federal funds for maintenance and operations. The agency maintains and operates 294 miles of roadways in 12 counties in Northern Illinois, including the Reagan Memorial Tollway (I-88), the Veterans Memorial Tollway (I-355), the Jane Addams Memorial Tollway (I-90), the Tri-State Tollway (I-94/I-294/I-80) and the Illinois Route 390 Tollway.

###