



# ELGIN O'HARE WESTERN ACCESS PROJECT A New, All-Electronic Toll Road



## I-490 TOLLWAY AND ILLINOIS ROUTE 390 TOLLWAY PROJECTS

The I-490 Tollway, coupled with the new Illinois Route 390 Tollway, will connect businesses and communities with one of the nation's busiest airports, transit facilities, major freight transportation hubs, distribution centers and multiple interstate highways including the Jane Addams Memorial Tollway (I-90) and the Central Tri-State Tollway (I-294).

Due to the overall magnitude and potential to dramatically improve mobility, freight connectivity and enhance the national and regional economies, the \$3.4 billion investment in the corridor is designated as a "Project of National and Regional Significance" by federal transportation legislation.

Designed to accommodate access into the O'Hare International Airport, the new cashless Tollways include 17 miles of new roads with 15 new or improved interchanges. The new Illinois Route 390 Tollway, completed in November 2017, carries east-west traffic and the new I-490 Tollway will be built to carry north-south traffic around the western border of O'Hare and provide access to the airport.

The projects are part of a regional transportation solution resulting from bipartisan consensus among local communities, business, labor, public finance and regional planning and transportation experts.

The projects include:

- Providing direct access to O'Hare International Airport property
- Constructing new roadways to provide access from I-294 to Franklin Avenue/Green Street
- Constructing a new partial interchange on I-294 at County Line Road/ North Avenue (Illinois Route 64)
- Constructing Touhy Avenue improvements

## THE PROJECT WILL:

Create as many as  
**65,000 jobs**  
(direct and indirect) by 2040 when combined with completion of the western terminal at O'Hare

**Save drivers \$145 million**  
in time and fuel annually by 2040

More than  
**16% less traffic**  
on local roads during rush hour

**Reduced delays by 24%**  
on local roads

Accommodate  
**3x as many vehicles**  
per day as local roads carry now

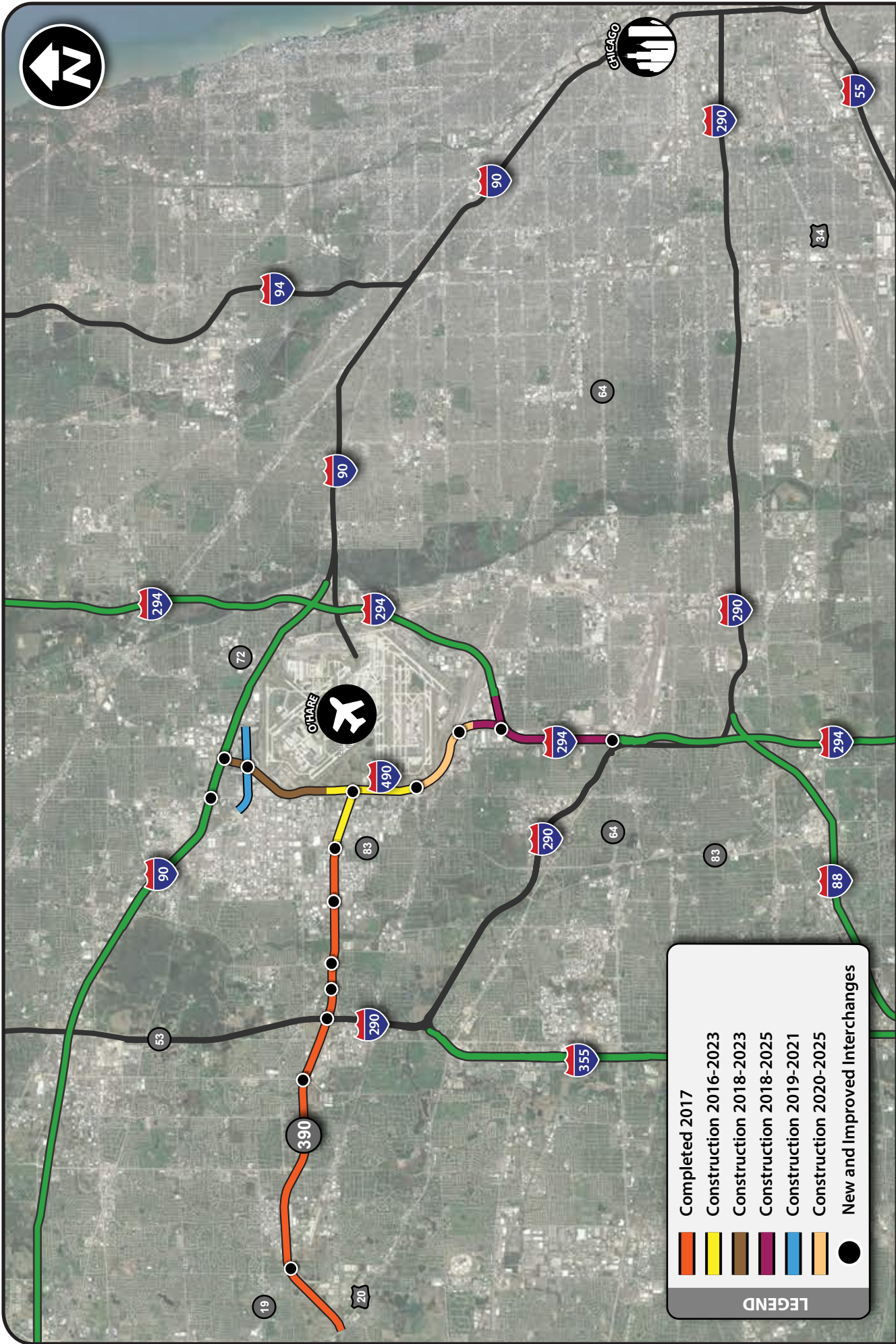
More than  
**7 minutes less travel time**  
between west side of O'Hare and Lake Street (U.S. Route 20) –  
**a savings of 25%**

Serve an estimated  
**120,000 vehicles**  
per day





Updated: 01/08/19



**LEGEND**

- Completed 2017
- Construction 2016-2023
- Construction 2018-2023
- Construction 2018-2025
- Construction 2019-2021
- Construction 2020-2025
- New and Improved Interchanges



# ELGIN O'HARE WESTERN ACCESS PROJECT

## A New, All-Electronic Toll Road