



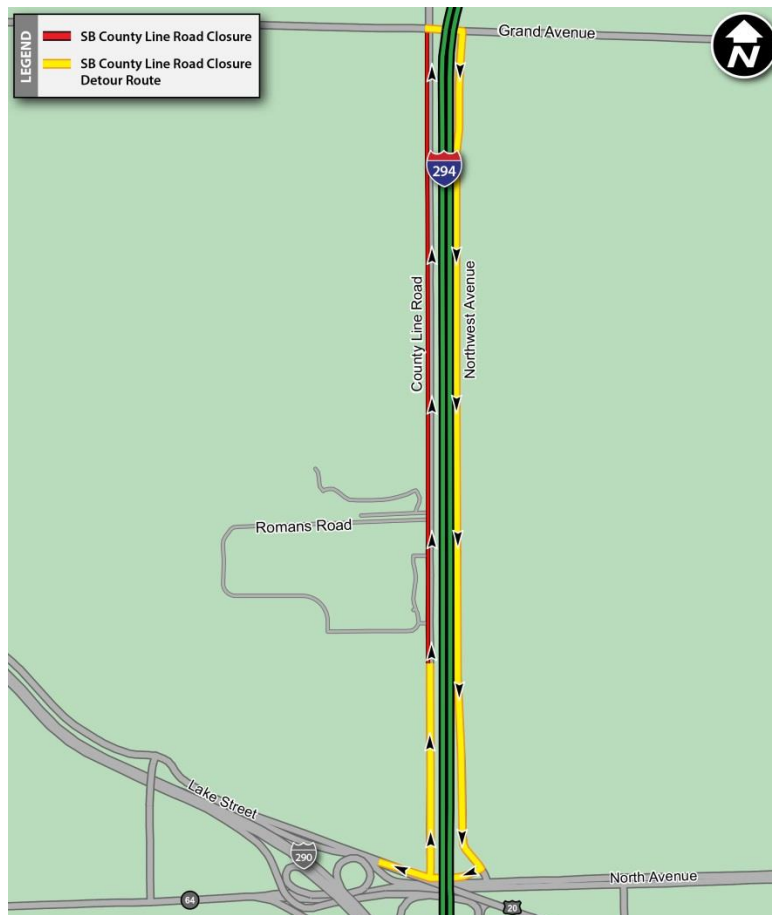
FOR IMMEDIATE RELEASE
March 20, 2019

COUNTY LINE ROAD CLOSURE IN ELMHURST TO BEGIN NEXT WEEK FOR UTILITY WORK *Detour will be posted for southbound County Line Road*

DOWNERS GROVE, IL – A portion of southbound County Line Road in Elmhurst will be closed temporarily beginning next week for utility work related to the Central Tri-State Tollway (I-294) Project. A detour will be posted.

Electronic message signs and construction signage will be put in place in advance to alert drivers to the road closure and detour. The closures are necessary to safely provide a work zone for utility relocation work.

Weather permitting, during the week of March 25, southbound County Line Road between Grand Avenue and Romans Road, located north of North Avenue, will close. A detour will be posted routing southbound County Line Road traffic to Northwest Avenue via Grand Avenue. Northbound County Line Road traffic will remain open.



This closure is scheduled to last into summer. Additional closures in the area are scheduled through 2020 to realign a portion of County Line Road to accommodate the reconstruction and widening of the Central Tri-State Tollway and for construction of a new ramp that will connect Southbound I-294 to County Line Road thereby providing new access to North Avenue and Lake Street. The new ramp construction is part of the North Avenue Interchange Project.

When completed, the North Avenue Interchange Project will provide a new ramp from southbound I-294 to County Line Road to help reduce congestion at the interchange and on local roads. In addition, the North Avenue and Lake Street (U.S. Route 20) intersection will be reconfigured to improve traffic flow and provide new direct access to eastbound North Avenue.

In addition, drainage improvements are planned to help alleviate flooding in the area during periods of heavy rainfall. Construction of detention ponds to hold stormwater and the installation of storm sewers will help address flooding along North Avenue. In partnership with the Illinois Tollway and cities of Northlake and Elmhurst, Cook County is leading the project's design and will be constructing the project improvements.

Construction information about the North Avenue Project is available on the Cook County Department of Transportation and Highways website at cookcountyiil.gov/service/construction-schedule.

Work Zone Safety

The Illinois Tollway is committed to ensuring that the Central Tri-State Tollway (I-294) and local roads remain safe for both drivers and workers during construction, which is part of the agency's overall commitment to roadway safety.

Construction zone speed limits are in effect in all construction zones 24/7 and drivers should continue to watch for changing traffic patterns and use caution, especially when workers are present.

The Illinois Tollway reminds motorists that the "Move Over Law" requires motorists to change lanes or to slow down and proceed with caution when passing any vehicle on the side of the road with hazard lights activated. If you see flashing lights ahead, please move over or slow down.

Illinois State Police have zero tolerance for drivers speeding in work zones or failure to comply with the Move Over Law.

The minimum penalty for speeding in a work zone is \$375. Posted signs advise drivers of a \$10,000 fine and a 14-year jail sentence for hitting a roadway worker.

Penalties for failure to slow down or move over for a vehicle on the shoulder with flashing lights includes up to a \$10,000 fine, 2-year suspension of driving privileges and jail time, in extreme cases.

About Move Illinois

The Illinois Tollway's 15-year, \$14 billion capital program, *Move Illinois: The Illinois Tollway Driving the Future*, is improving mobility, relieving congestion, reducing pollution, creating as many as 120,000 jobs and linking economies throughout the region. The first seven years of *Move Illinois* are on schedule and within budget, delivering the new Illinois Route 390 Tollway and a rebuilt and widened Jane Addams Memorial Tollway (I-90) with its new SmartRoad corridor, as well as opening a new interchange connecting the Tri-State Tollway (I-294) to I-57. Progress continues on projects addressing the remaining needs of the existing Tollway system, delivering the new I-490 Tollway Project and reconstruction of the Central Tri-State Tollway (I-294) and planning for emerging projects.

About the Illinois Tollway

The Illinois Tollway is a user-fee system that receives no state or federal funds for maintenance and operations. The agency maintains and operates 294 miles of roadways in 12 counties in Northern Illinois, including the Reagan Memorial Tollway (I-88), the Veterans Memorial Tollway (I-355), the Jane Addams Memorial Tollway (I-90), the Tri-State Tollway (I-94/I-294/I-80) and the Illinois Route 390 Tollway.

#