



ILLINOIS TOLLWAY NEWS

FOR IMMEDIATE RELEASE
JUNE 18, 2020

TOLL PLAZA IMPROVEMENTS SCHEDULED TO BEGIN NEXT WEEK
AT JANE ADDAMS MEMORIAL TOLLWAY (I-90) EAST RIVERSIDE INTERCHANGE
Extended lane closures needed through fall for pavement reconstruction and plaza conversion in Rockford

DOWNERS GROVE, IL – Construction is scheduled to begin next week and continue through fall for toll plaza improvements on the ramp connecting the westbound Jane Addams Memorial Tollway (I-90) to East Riverside Boulevard in Rockford.

Electronic message signs and construction signage will be put in place in advance to alert drivers to lane closures and provide a safe work zone throughout construction. Ramp access and toll collection will continue uninterrupted while work is underway. All work is weather dependent.

To improve traffic flow and convenience for traffic exiting from westbound I-90 to East Riverside Boulevard, the Illinois Tollway will be updating toll collection at the ramp plaza to provide all-electronic toll collection.

Currently the ramp toll plaza provides one I-PASS or Pay Online lane, in addition to one lane with a coin basket for toll collection. Removal of the coin basket will allow the Tollway to offer customers two, non-stop I-PASS or Pay Online lanes.

“This is an improvement that will benefit the local communities, businesses and medical facilities that have developed around this interchange,” Illinois Tollway Executive Director José Alvarez. “As we work to complete construction, safety is just as important as access for drivers who use the Tollway to reach work and home, and we thank them for their patience.”

Beginning the week of June 22, the right shoulder and toll collection lane on the right side of the toll plaza will close to traffic for removal of the concrete median between toll collection lanes and the coin basket, along with pavement and electrical work. The ramp and the I-PASS or Pay Online lane on the left will remain open to traffic.

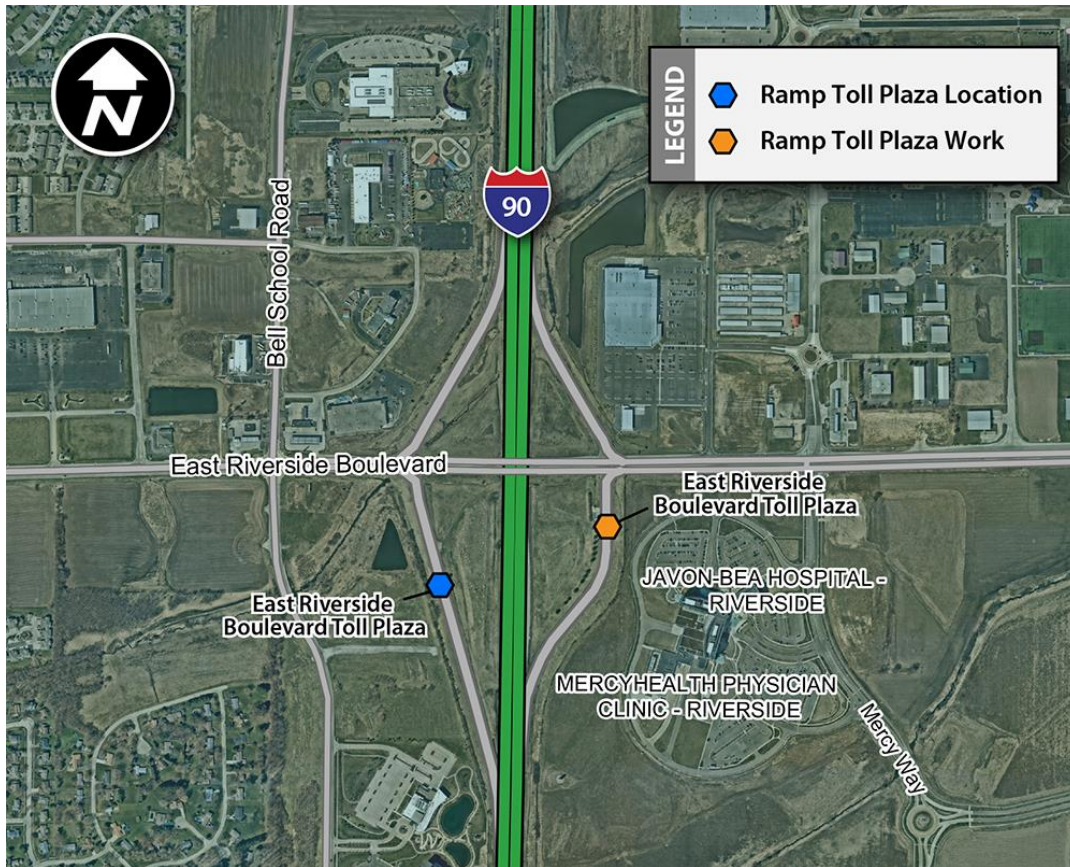
After work is completed on the right side of the toll plaza, the right toll collection lane will reopen as an I-PASS or Pay Online lane and the left shoulder and left toll collection lane will close to complete pavement work. All ramp improvements are scheduled to be complete this fall.

The Illinois Tollway operates the nation’s largest electronic tolling system, with more than 90 percent of all toll transactions paid electronically through I-PASS or E-ZPass. Drivers without I-PASS can pay their tolls online at the cash rate within the seven-day grace period at www.illinoistollway.com. Grace period toll payments are double the I-PASS rates.

All work is being coordinated with the Illinois Department of Transportation, City of Rockford, as well as local fire and police departments. The work is funded by the Illinois Tollway’s 15-year, \$14 billion capital program, *Move Illinois: The Illinois Tollway Driving the Future*.

-more-

Maps and construction information about the East Riverside Boulevard Toll Plaza improvements are available in the Projects section on the Tollway's website at illinoistollway.com.



Work Zone Safety

The Illinois Tollway is committed to ensuring that the Jane Addams Memorial Tollway (I-90) and local roads remain safe for both drivers and workers during construction, which is part of the agency's overall commitment to roadway safety.

Work zone speed limits are in effect in all construction zones 24/7 and drivers should continue to watch for changing traffic patterns and use caution, especially when workers are present.

The Illinois Tollway reminds motorists that the "Move Over Law" requires motorists to change lanes or to slow down and proceed with caution when passing any vehicle on the side of the road with hazard lights activated. If you see flashing lights ahead, please move over or slow down.

Illinois State Police have zero tolerance for drivers speeding in work zones or failure to comply with the Move Over Law. The minimum penalty for speeding in a work zone is \$250 and can include up to a \$25,000 fine and a 14-year jail sentence for hitting a roadway worker. Penalties for failure to slow down or move over for a vehicle on the shoulder with flashing lights includes up to a \$10,000 fine, 2-year suspension of driving privileges and jail time, in extreme cases.

About Move Illinois

The Illinois Tollway's 15-year, \$14 billion capital program, *Move Illinois: The Illinois Tollway Driving the Future*, is improving mobility, relieving congestion, reducing pollution, creating as many as 120,000 jobs and linking economies throughout the region. The first eight years of *Move Illinois* is on schedule and within budget, delivering the rebuilt and widened Jane Addams Memorial Tollway (I-90) as a state-of-

the-art 21st century corridor and opening a new interchange connecting the Tri-State Tollway (I-294) to I-57. Progress continues on projects addressing the remaining needs of the existing Tollway system, delivering the Elgin O'Hare Western Access Project and planning for emerging projects, including reconstruction of the Central Tri-State Tollway (I-294).

About the Illinois Tollway

The Illinois Tollway is a user-fee system that receives no state or federal funds for maintenance and operations. The agency maintains and operates 294 miles of roadways in 12 counties in Northern Illinois, including the Reagan Memorial Tollway (I-88), the Veterans Memorial Tollway (I-355), the Jane Addams Memorial Tollway (I-90), the Tri-State Tollway (I-94/I-294/I-80) and the Illinois Route 390 Tollway.

#