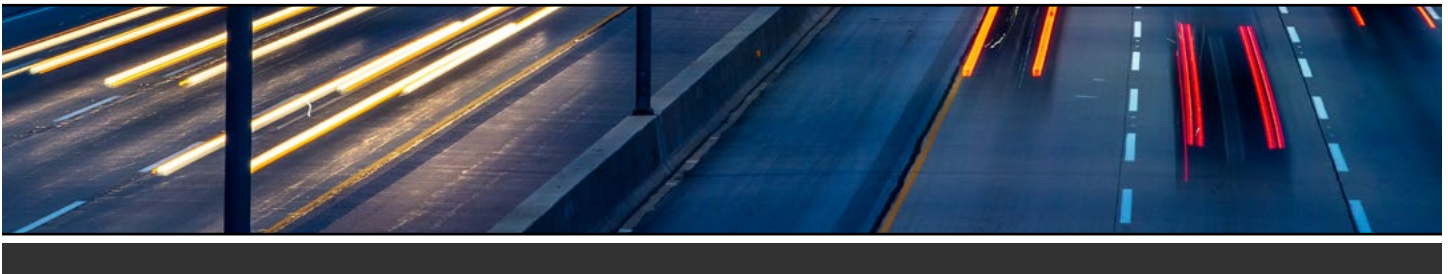




ILLINOIS TOLLWAY UPDATE



TOLLWAY DIVERSITY ADVISORY COUNCIL MEETS VIRTUALLY TO TALK TOLLWAY DIVERSITY SUCCESSES, FUTURE

In February, the Illinois Tollway brought together its Diversity Advisory Council for the first meeting in 2021.



The meeting, held virtually due to COVID-19 safety precautions, allowed Tollway leadership to discuss its strong and unwavering focus on creating access to economic opportunities for historically disadvantaged companies and individuals and to bring the Council’s membership together in support of these efforts.

“As Board Chairman, I am proud that Tollway staff and leadership have met the challenges of managing the agency during this global pandemic. We are committed to rise to the call from Gov. JB Pritzker to support our state, recognizing that now it is more important than ever to invest in, create, and support good-paying jobs,” said Tollway Board Chairman Will Evans.

Continued on page 2

ILLINOIS TOLLWAY WINS AWARD FOR EXCELLENCE IN SNOW AND ICE CONTROL FROM AMERICAN PUBLIC WORKS ASSOCIATION

In recognition of its outstanding work during winter storms to keep customers safe and roads clear, the Illinois Tollway has received the 2021 Excellence in Snow and Ice Control Award from the American Public Works Association.

The award is presented annually by the APWA to select public works and transportation agencies that demonstrate sustained achievement in clearing snow and ice from their roadways to ensure they continue operating safely during severe winter weather. The Tollway was one of three agencies in North America to receive the award.

The Tollway prepares for winter weather year-round by servicing its fleet of nearly 200 snowplows, procuring salt and other de-icing materials and refining its operational plans to better respond to a variety of storm conditions.



“The safety of our more than 1.6 million daily drivers is the Illinois Tollway’s top priority and that’s why we’re ready whenever winter storms strike to provide clear, reliable roads so our customers can safely reach their destinations,” said Illinois Tollway Executive Director José Alvarez. “We’re pleased to accept

Continued on page 2

The Illinois Tollway's commitment to increasing participation on Tollway contracts for small, minority and veteran-owned firms has continued uninterrupted and is bearing fruit.

By coming together with industry and responding with continuing critical investments in infrastructure in 2020 the Tollway:

- Awarded more than 25 percent of all construction contracts and more than 62 percent of all professional services contracts to DBE firms.
- Advertised 45 small business contracts.
- Launched the new Rolling Owner-Controlled Insurance Program to provide general liability insurance coverage for Tollway small business contracts and remove a critical barrier for small firms.

"But we're not taking a victory lap – we're going to raise the bar higher in 2021. We will do more to find diverse businesses who want to work for the Tollway, create more contracting opportunities and invest in the support programs needed to grow the pool of available firms, and we need you spread the word about these benefits and advantages."

Every new exclusive contracting opportunity for small, diverse and veteran-owned businesses is an opportunity to improve the lives of hard-working business owners and workers.

"We are not here to maintain the status quo or settle for incremental progress. We are looking for lasting, significant changes in how the Tollway approaches participation by small and diverse companies and individuals," said Director Stephen Davis.

The Diversity Advisory Council, created to gain outside perspectives and assist the Tollway in building upon its established foundation of inclusion, is composed of representatives from nearly 30 advocacy agencies, each with a long history of assisting small, diverse and veteran-owned businesses, as well as individuals seeking workforce assistance and training.

Information about the Council and its work is available in the Diversity section on the [Illinois Tollway's website](#).

APWA Award for Excellence in Snow and Ice Control, continued from page 1

this award recognizing the exemplary work done by our roadway and operations staff and we pledge to continue working to improve our response to severe winter weather."

The Tollway uses snowplows equipped with smart technologies that helps them efficiently clear snow and ice, while also allowing drivers to adjust the amounts of salt and other de-icing materials dispersed to limit their impact on our environment. Using various concentrations of chlorides, brine solutions, beet-heat and aggregates enables the Tollway to address varying winter weather conditions on different segments of the Tollway system to better remove wind-blown or hard-packed snow from roadways.

During winter storms, the Illinois Tollway has a full complement of more than 200 staff and supervisors working per shift, around the clock, if necessary, to ensure that roadways are kept clear of snow and ice.

The Tollway also typically deploys plows in advance of storms to pre-treat key portions of its system to slow the buildup of snow and ice on roadways, then continues

cleanup operations following storms to remove snow from shoulders and medians to provide the safest possible roadway conditions for drivers.

"We're out there working in advance of the storm and we continue with cleanup efforts even after the snow has stopped falling," Alvarez said. "That's why our roads operate so safely and efficiently even during extreme conditions."

To keep customers informed about snow removal efforts and roadway conditions, the Tollway communicates with customers before, during and after each storm through traditional media outlets such as radio and TV broadcast stations, as well as social media channels and on its website, [illinoistollway.com](#).

The Tollway also works in close coordination with the Illinois of Transportation, Illinois State Police and local transportation agencies to serve the entire northern Illinois region.

A network of 12 maintenance facilities—including some new, LEED-certified structures—are located across the Tollway system to better support snow and ice removal

THE ILLINOIS TOLLWAY WILL CONTINUE TO MOVE ILLINOIS WITH \$1.53 BILLION BUDGETED FOR THE 2021 CONSTRUCTION SEASON

The Illinois Tollway has kicked off the 2021 construction season as the 10th year of the *Move Illinois* capital program begins with some of the biggest and most challenging projects lying ahead.

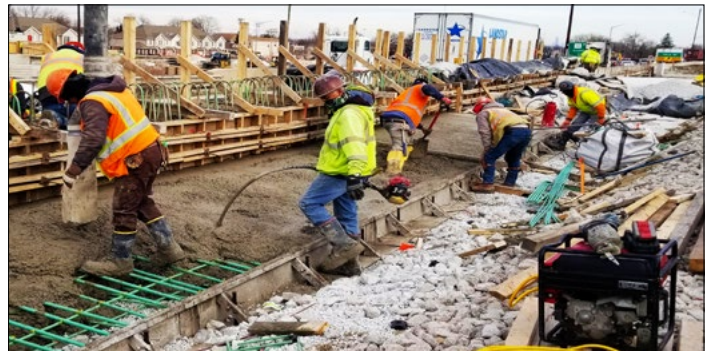
The Tollway's 2021 capital program calls for investing an astounding \$1.53 billion in the region's infrastructure. This includes more than \$451 million to continue planning and advance construction for the new I-490 Tollway and new interchanges connecting to the Jane Addams Memorial Tollway (I-90), Tri-State Tollway (I-294), the Illinois Route 390 Tollway, as well as providing direct access in and out of O'Hare International Airport as part of the Elgin O'Hare Western Access Project.

Work to reconstruct and widen the Central Tri-State Tollway (I-294) will continue in 2021 with more than \$690 million budgeted to continue design and construction of the roadway, as well as the new BNSF Railway Bridge, the new Mile Long Bridge and to begin work to reconfigure the I-290/I-88 Interchange at I-294.

In addition, \$78 million is allocated in 2021 for ongoing work to complete the final ramps for the I-294/I-57 Interchange.

The 2021 capital program also provides \$312.2 million for systemwide roadway and bridge repairs to keep the existing Tollway system in good repair. Several local projects include replacing the Deerpath Road Bridge over the Reagan Memorial Tollway (I-88) in Aurora, rebuilding the Stearns School Road Bridge over the Tri-State Tollway (I-94) in Gurnee, and building a new Windsor Road Bridge at I-88 and I-294 in coordination with roadway improvements by the Village of Oak Brook.

As construction continues to deliver these significant infrastructure improvements the Tollway's goals and commitment to the communities and customers it serves continues to strengthen.



JACQUELINE GOMEZ FUENTES JOINS ILLINOIS TOLLWAY BOARD

The Illinois Tollway welcomes Jacqueline Gomez Fuentes as a new director to the Tollway Board.

Governor JB Pritzker appointed Gomez Fuentes to fill an open seat on the Tollway Board of Directors earlier this month.

Gomez Fuentes currently serves as the director of supplier and workforce diversity at the Obama Foundation, where she is responsible for the implementation and management of the foundation's diversity and inclusion programming.

Previously, she worked as the director of contract compliance for Cook County and vice president of business development and marketing at SUMAC Inc., a multinational consulting firm based in Chicago.

In 2018, Gomez Fuentes received the Advocacy Award for business diversity and inclusion from the Hispanic American Construction Industry Association.



H.E.L.P. TRUCKS SHOWCASED IN NATIONAL SAFETY SERVICE PATROL FORUM

Always ready for duty, the Illinois Tollway's H.E.L.P. trucks were showcased as part of a February 10 event hosted by SafeHighways.org to highlight the unique features of safety service patrol vehicles from more than half a dozen state transportation agencies.

"H.E.L.P. trucks are one of the most welcome sights on the Illinois Tollway for our customers," said Steven Mednis, general manager of traffic and incident management. "It's one of the most appreciated and important services we provide."

When second matters, the Tollway's fleet of 12 Highway Emergency Lane Patrol trucks respond quickly to provide emergency roadside services for customers and assist in clearing disabled vehicles from the scene of crashes to ensure safe, free-flow traffic on the roadways. Along with motorist aid patrol vehicles, as well as patrols by Illinois State Police District 15, the Tollway operates emergency assistance for customers 24/7/365.

Last year, H.E.L.P. truck operators assisted more than 17,000 customers, providing such services as changing tires, boosting batteries and dispensing fuel for stranded motorists.

With assistance from veteran Equipment Operator Laborer Jeffrey Dale, Mednis detailed for an online audience of about 40 transportation professionals from two dozen states what makes the Tollway's H.E.L.P. trucks stand out. The event was hosted by SafeHighways.org, a national safety organization established by Travelers Marketing to provide a forum for safety service patrol professionals to share best practices.

Among the features highlighted, Mednis demonstrated the array of amber, white and red emergency lights that improve the visibility of emergency responders on scene. Federal Highway Administration studies show that the addition of red lights create greater awareness of roadway incidents and make it safer for everyone.

On the back of the H.E.L.P. truck, Mednis pointed out the permanently affixed display arrow board and the full message board that can be customized by the truck operator to communicate safety messages directly to motorists ahead of an incident. He also talked about how tools and supplies are kept in storage bins on both sides of the trucks to limit the operator's exposure to live traffic and the extensive training operators go through to prepare them for a wide variety of situations.

Mednis also explained the importance of H.E.L.P. trucks to keeping the roadways safe. H.E.L.P. trucks are crucial to preventing secondary crashes, which are oftentimes more severe than the initial crash. Through a combination of training, equipment and effective incident management, the Tollway has successfully reduced secondary crashes to 2 percent of all crashes on its system, compared to the national average of 8 percent.

"That is the main focus of our drivers," said Mednis. "Get on scene, assess the situation and clear those vehicles out of the lane."

Click [here](#) to watch the video.



MOVE ILLINOIS CAPITAL PROGRAM UPDATE

The Tollway's 15-year, \$14 billion capital program, Move Illinois, is improving mobility, relieving congestion, reducing pollution, creating as many as 120,000 jobs and linking economies throughout the region. The program is scheduled from 2012-2026.

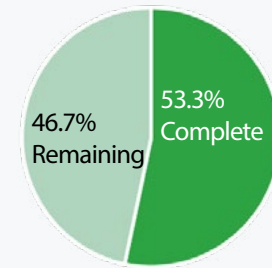
MOVE ILLINOIS PROGRAM STATUS - DATA THROUGH JANUARY 2021

MOVE ILLINOIS PROGRAM BUDGET OVERVIEW (2012-2021)

\$9.9 billion or 69.7% of the program budget committed

- **\$5.6 billion**, or approximately 39.5%, in construction work
- **\$2.6 billion**, or approximately 18.0%, in consultant services
- **\$1.6 billion**, or approximately 11.6%, in other costs (utilities, ROW, misc.)
- **\$190.2 million** in reimbursement agreements has been approved; reducing overall program costs by 1.3%

53.3% of the Move Illinois Program is complete (work in place)



PROGRAM EXPENDITURES (2012-2021)



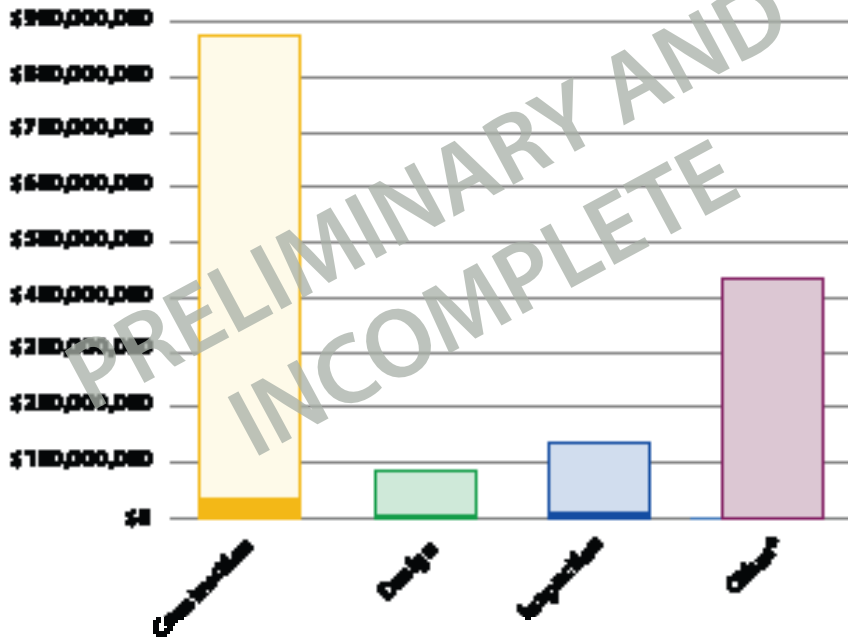
PROGRAM BUDGET BY CORRIDOR (2012-2021)

Program Element	Current Budget (millions)	Original Awards to Date (millions)	Contract Changes (CO/EWO/Supp.) (millions)	Total Obligations* (millions)	Budget Remaining (millions)
I-94/I-294/I-80	\$4,380.2	\$2,645.2	\$111.2	\$2,756.4	\$1,623.9
I-88	\$360.3	\$299.3	\$2.7	\$302.0	\$58.3
I-90	\$2,359.4	\$2,236.5	\$81.7	\$2,318.2	\$41.2
I-355	\$265.7	\$147.4	\$14.9	\$162.4	\$103.3
SW	\$3,188.3	\$1,262.8	\$209.4	\$1,472.2	\$1,716.1
I-294/I-57	\$331.7	\$274.8	\$7.5	\$282.2	\$49.4
EOWA	\$3,266.4	\$2,416.1	\$144.5	\$2,560.6	\$705.8
Other emerging projects	\$121.1	\$40.2	(\$13.5)	\$26.7	\$94.4
Totals	\$14,273.0	\$9,322.2	\$558.3	\$9,880.5	\$4,392.5

*Total Obligations = Original Awards to Date + Contract Changes (CO/EWO/Supplements)

NOTE: \$572.2 million of additional Right of Way and Utility Authorizations reclassified from Contract Changes to Original Awards to Date

2021 PROGRAM PROGRESS (THROUGH JANUARY 2021)



2021 PROGRAM METRICS (THROUGH JANUARY 2021)

Awarded **4** construction and professional services contracts

Awarded **4** construction contracts less than \$10 million

Closed out **10** construction and professional services contracts

2021 YTD	2021 Estimated Expenditures	Progress Through January 2021**	Percent Complete
Construction	\$875,274,678	\$36,446,215	4%
Design	\$86,967,410	\$6,497,944	7%
Inspection	\$138,102,465	\$8,378,578	6%
Other*	\$433,731,030	\$867,439	0%
Total	\$1,534,075,583	\$52,190,175	3%

*Other includes non-roadway, right-of-way, utilities and third-party payments.

**Financial data presented is preliminary, unaudited and subject to change.

Preliminary financials are provided, as end-of-year data will be confirmed with the closing of the general ledger.



I-294 Archer Avenue Interchange Project near Justice and Willow Springs

MOVE ILLINOIS PROGRAM PROGRESS MAP



COMPLETED

- Jane Addams Memorial Tollway (I-90) Rebuilding and Widening
- Illinois Route 390 Tollway Construction
- Existing System Needs – Reagan Memorial Tollway (I-88), Veterans Memorial Tollway (I-355), Edens Spur Tollway (I-94)
- Tri-State Tollway (I-294)/I-57 Interchange – Phase 1

CONSTRUCTION UNDERWAY

- I-490 Tollway Construction
- Central Tri-State Tollway (I-294) Reconstruction
- Tri-State Tollway (I-294)/I-57 Interchange – Phase 2
- Existing System Needs –Reagan Memorial Tollway (I-88)