



Eastern Segment Briefing

Jane Addams Memorial Tollway (I-90)

Rebuilding and Widening Project

January 8, 2014

An aerial photograph of the state of Illinois, showing a mix of green fields, brown patches, and urban areas. A white line is drawn across the map, starting from the bottom left and curving towards the top right. A horizontal white band with green borders is positioned across the middle of the image, containing the text 'MOVE ILLINOIS'.

MOVE ILLINOIS



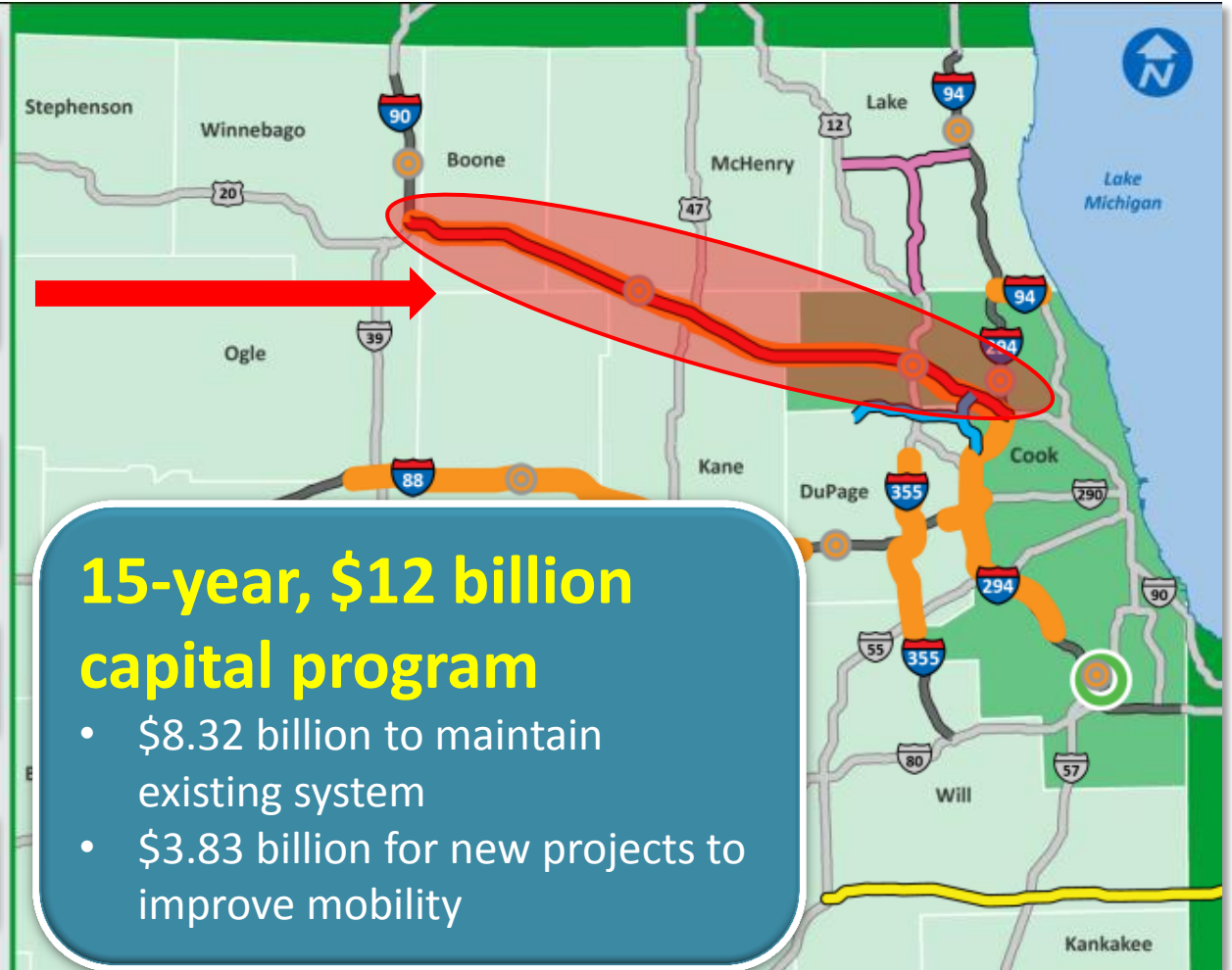
**MOVE
ILLINOIS**

**JANE ADDAMS
MEMORIAL TOLLWAY
(I-90)**

**I-294/I-57
INTERCHANGE**

ILLINOIS ROUTE 53/120 NORTH EXTENSION

- \$8.32 billion to maintain existing system
- \$3.83 billion for new projects to improve mobility



***Moving Illinois* Progress**

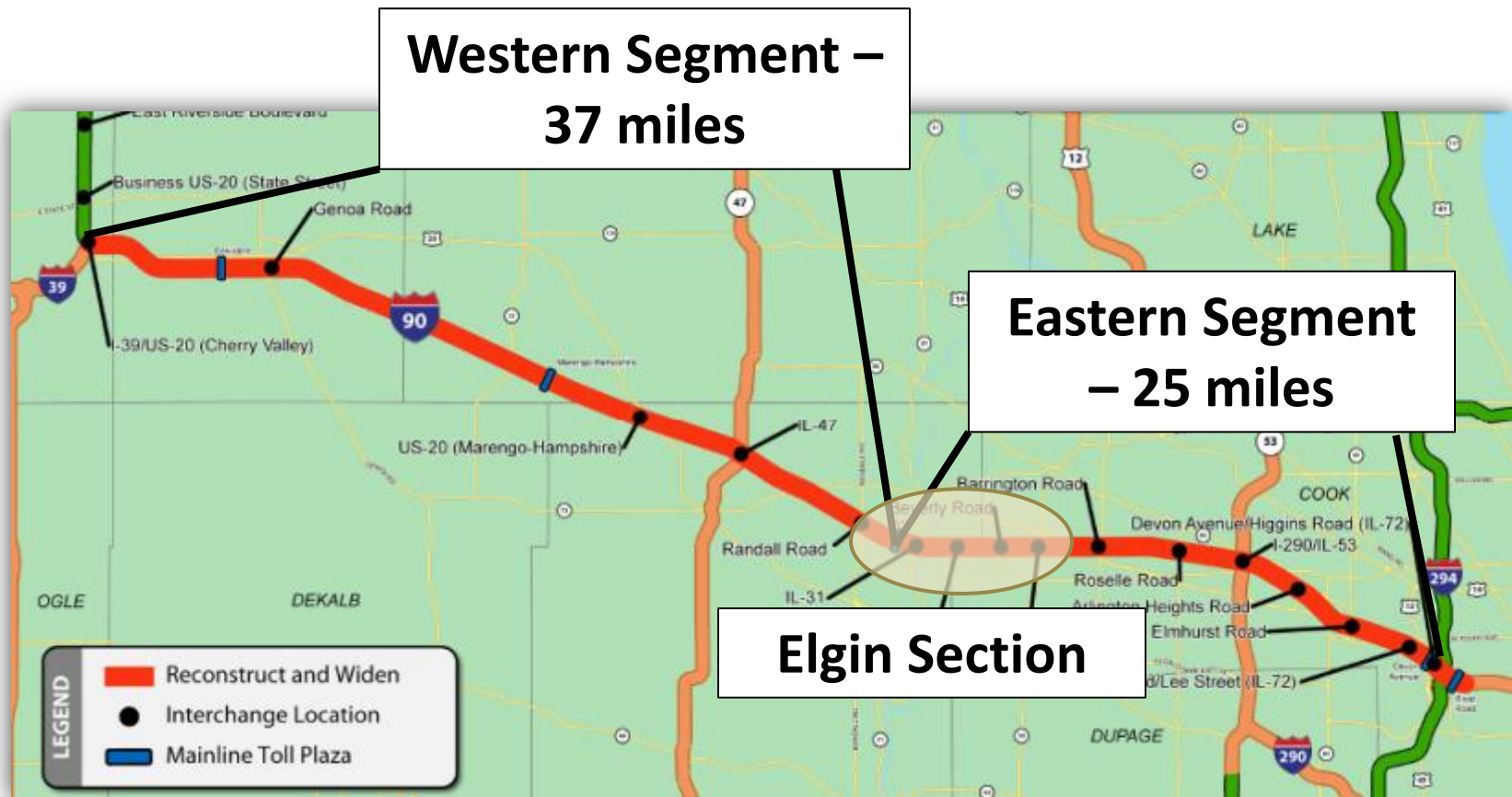
Click link for *Move Illinois* Progress [video](#)



PROJECT OVERVIEW



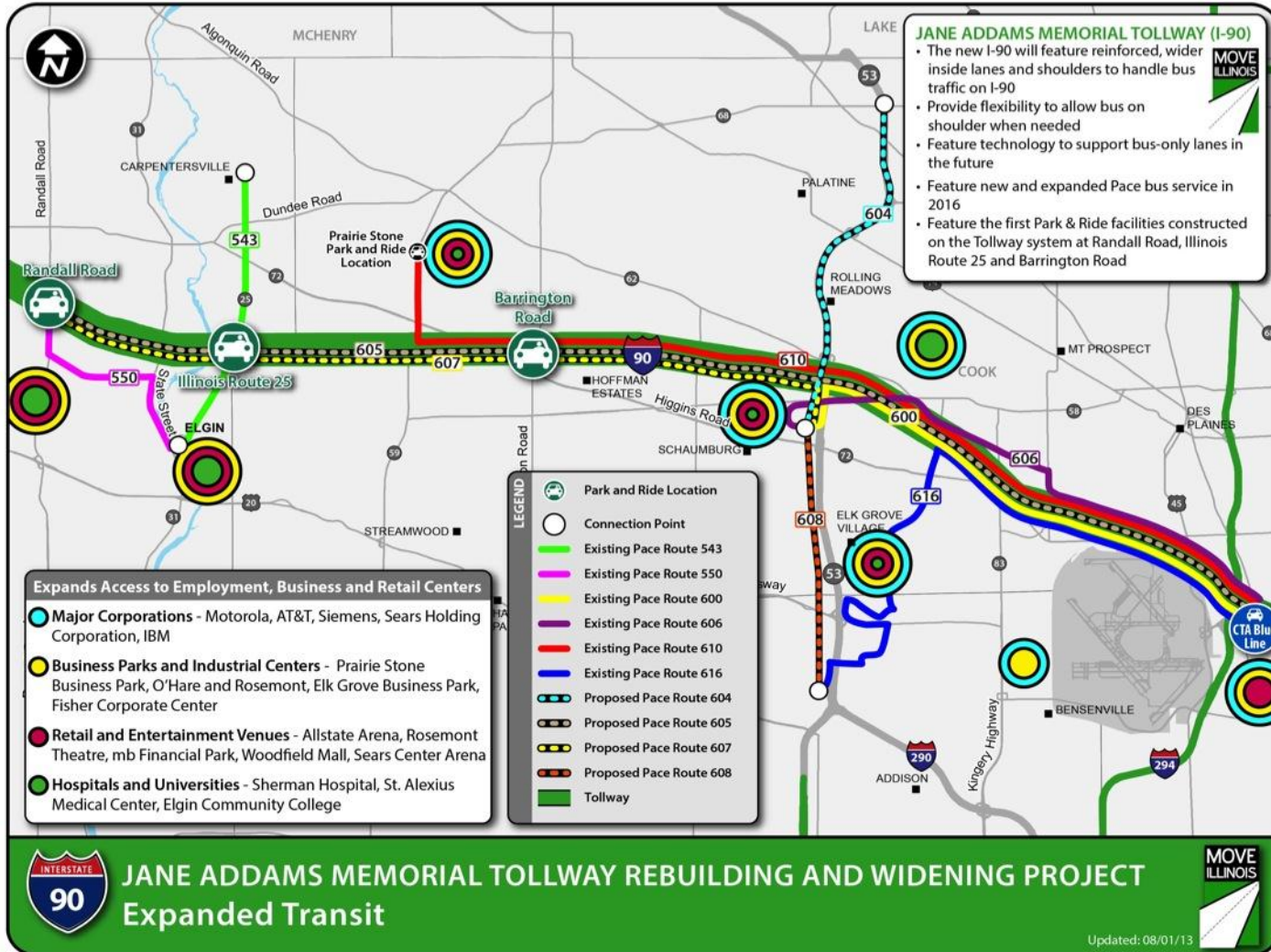
Jane Addams Memorial Tollway (I-90) Rebuilding and Widening Project



TRANSIT

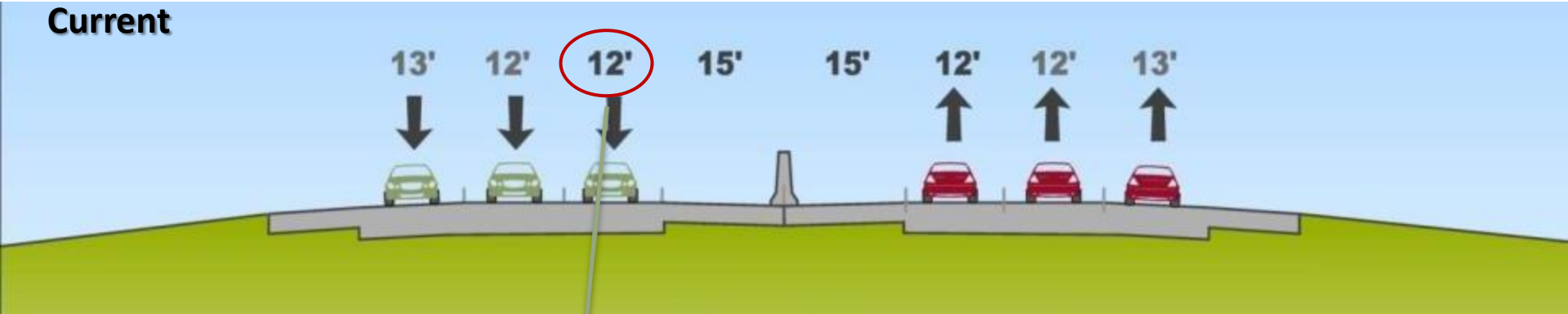


Transit Along I-90 Corridor

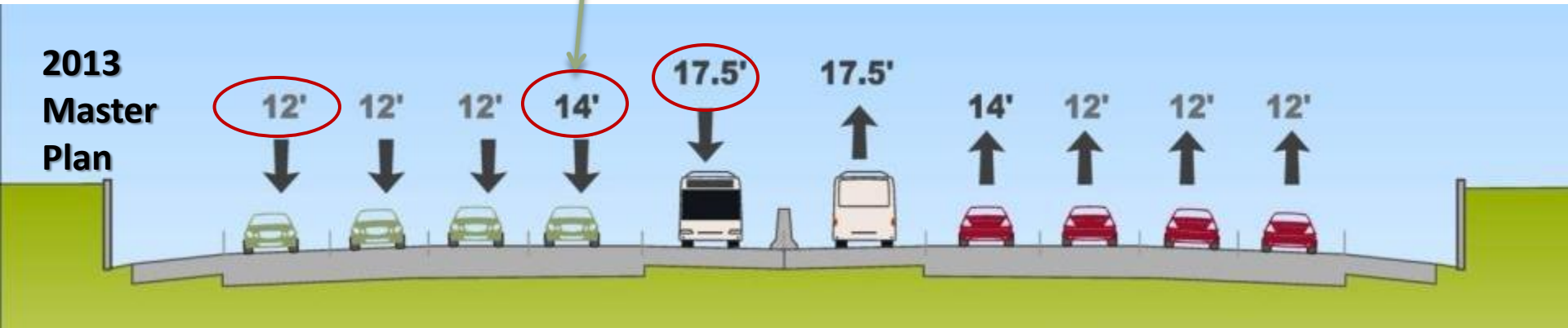


Typical Section

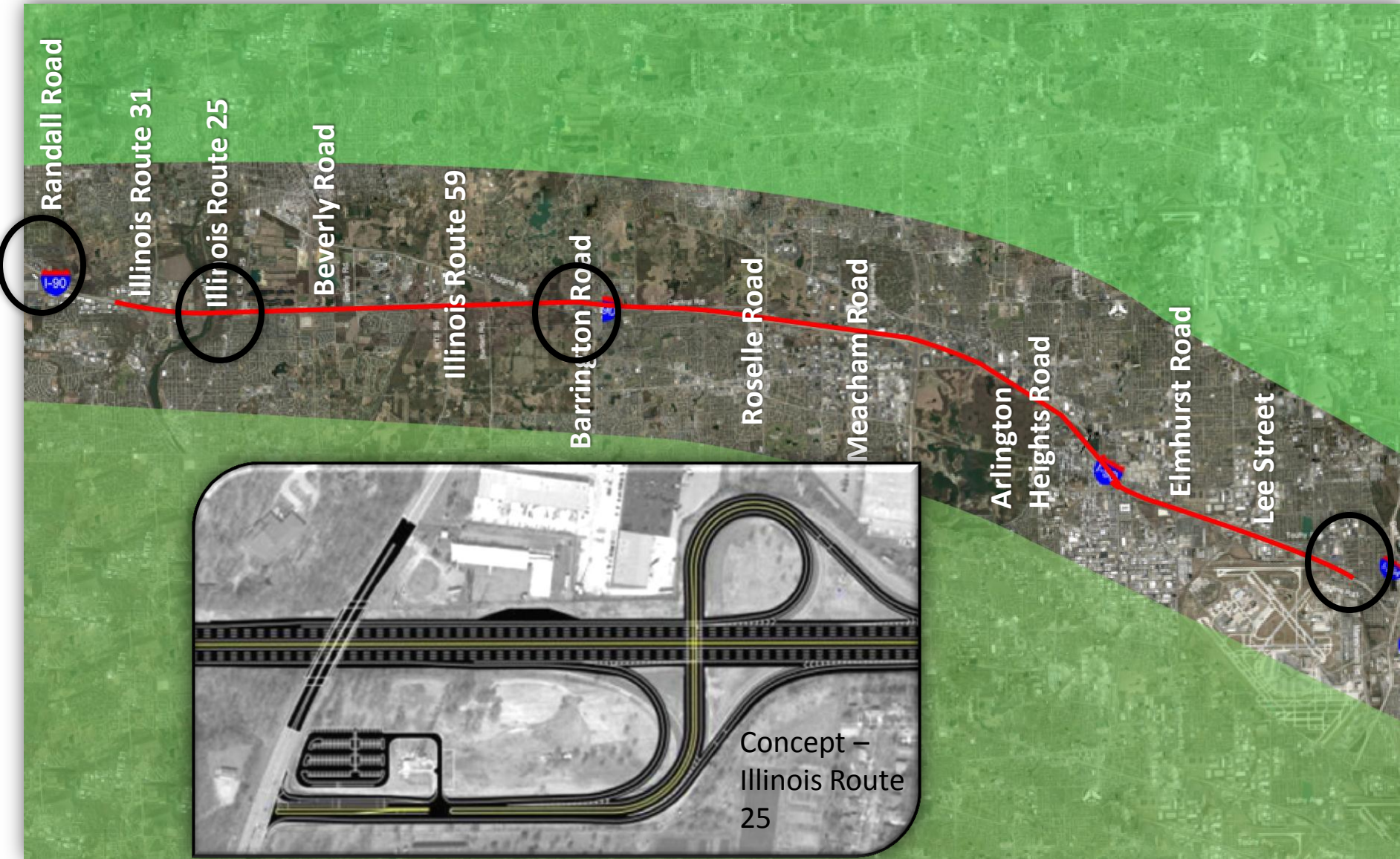
Current



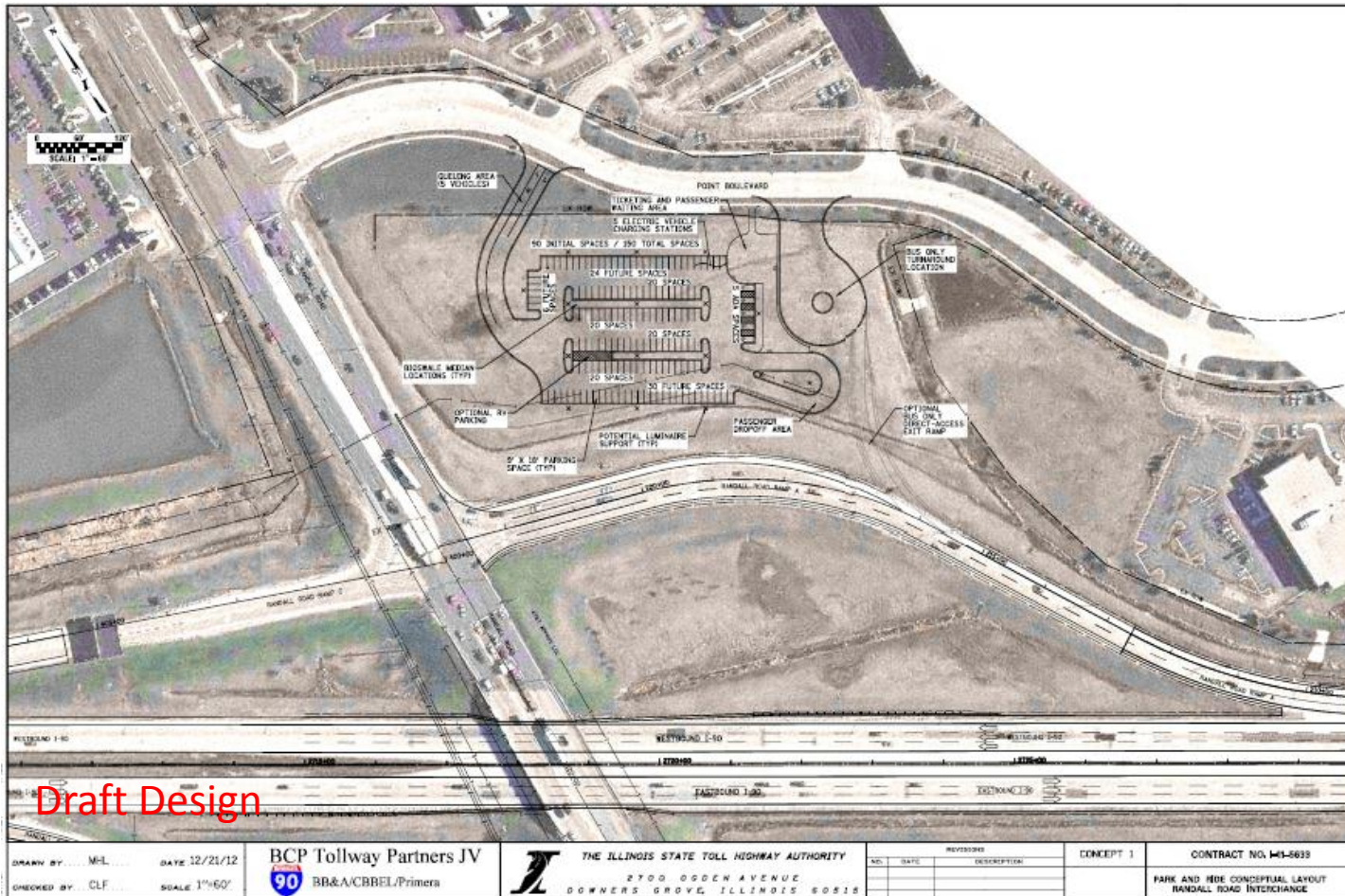
2013
Master
Plan



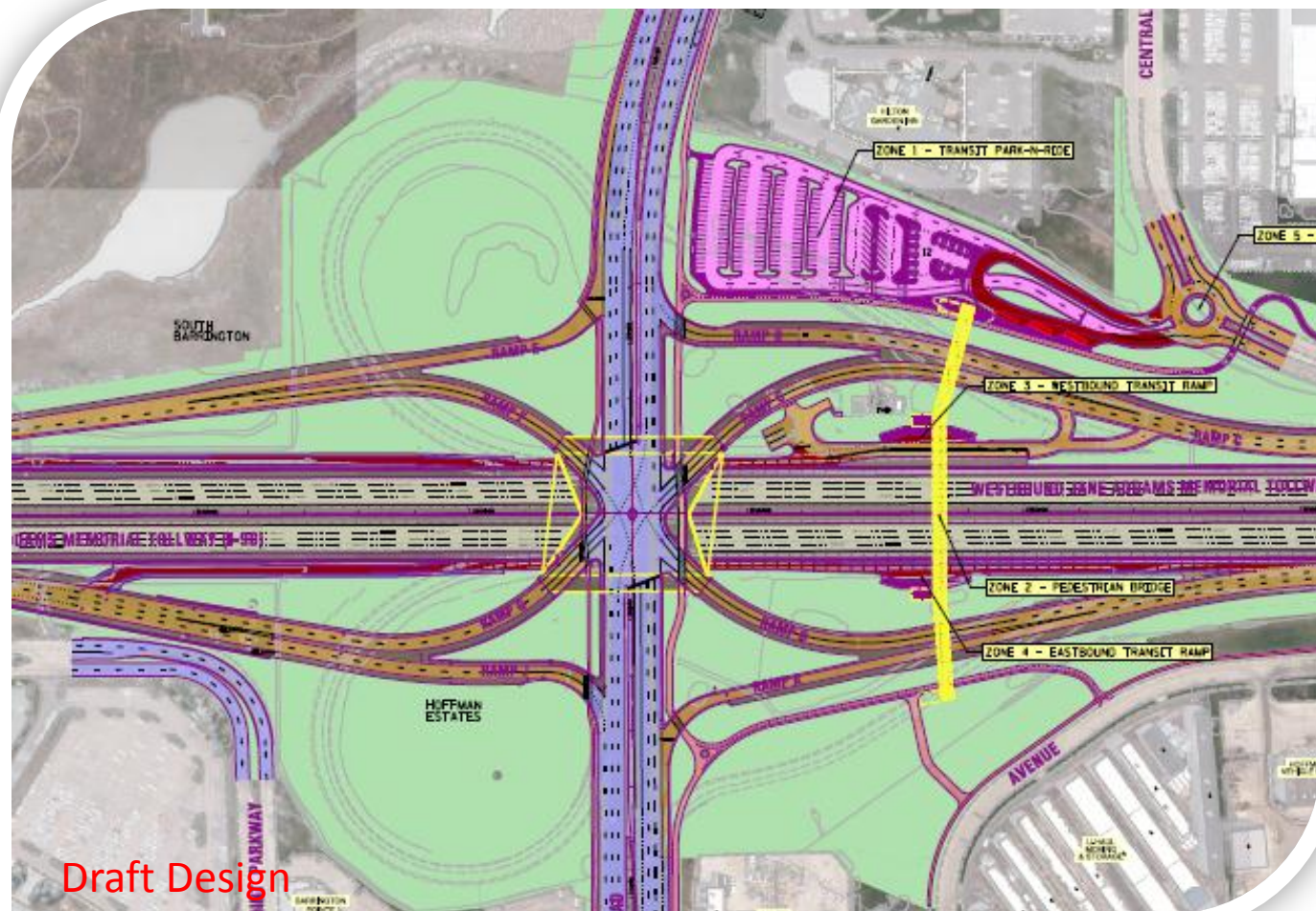
Park & Ride Facilities



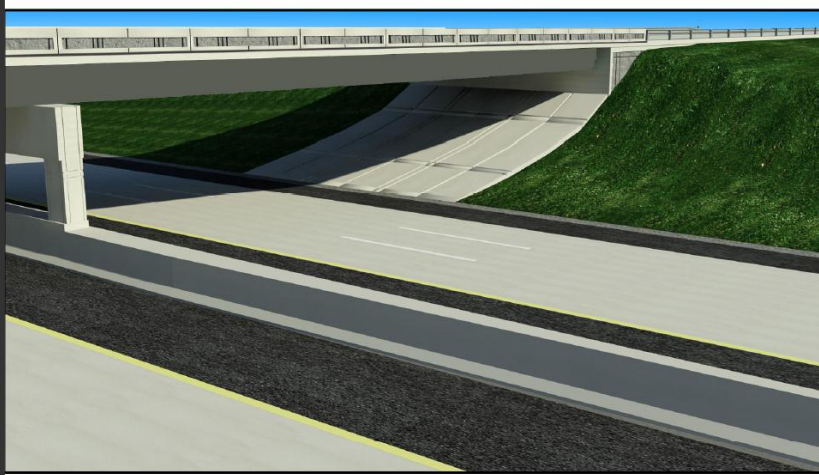
Randall Road Park & Ride



Barrington Road Park & Ride



Aesthetic Opportunities

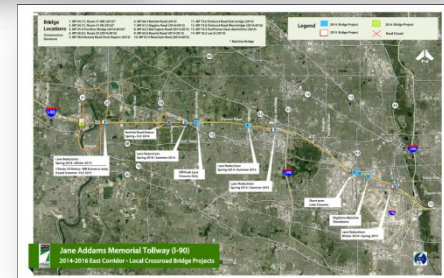
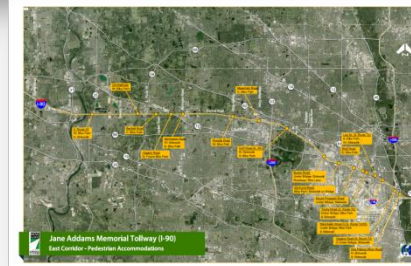
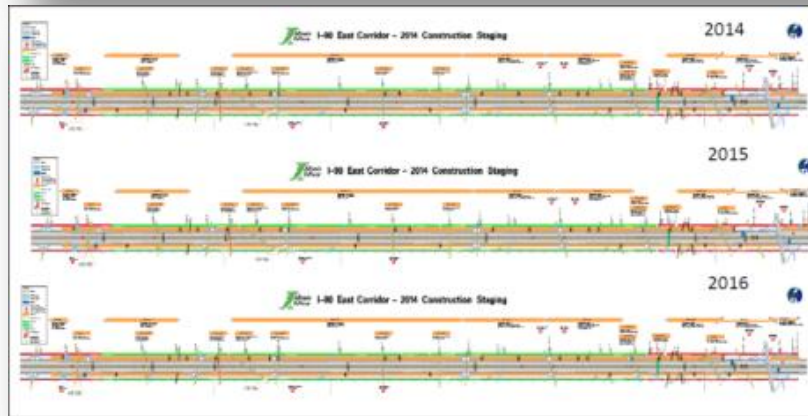
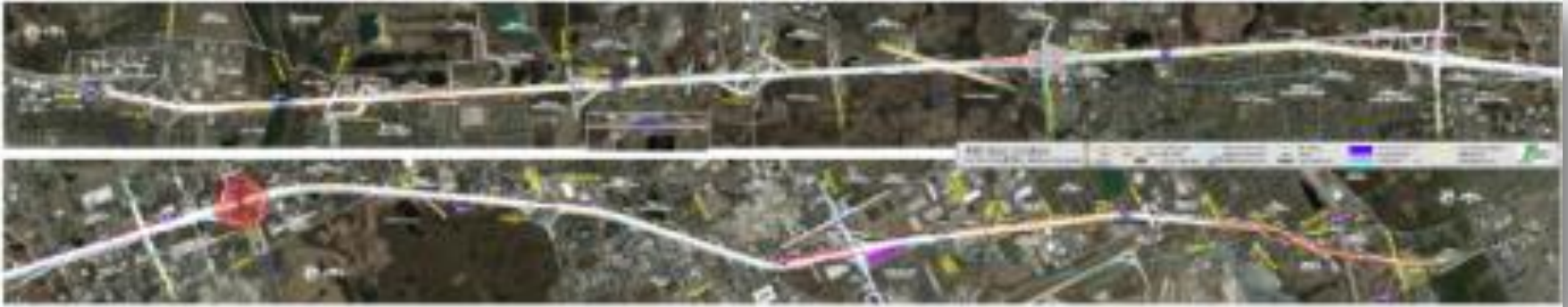


Local Crossroad
Bridges

Noisewalls



Eastern Segment Details



Next Steps

- **In 2013, the Tollway awarded more than 55 contracts worth nearly \$730 million**
- **Estimated 40 construction contracts worth nearly \$650 million**
- **More than 15 professional services contracts worth more than \$80 million**
- **More than 315 firms working on I-90**
 - More than 215 construction firms
 - More than 100 Professional services firms
- **51 contracts on Eastern segment – 2014-2016**
 - 26 in 2014
 - 12 in 2015/2016
- **Work hours**
- **Open House meetings to be held in the first quarter of 2014**



**MOVE
ILLINOIS**

Questions?

The Illinois Tollway

**DRIVING
THE FUTURE**