



---

# Western Segment Briefing

Jane Addams Memorial Tollway (I-90)  
Rebuilding and Widening Project

**January 8, 2014**

---

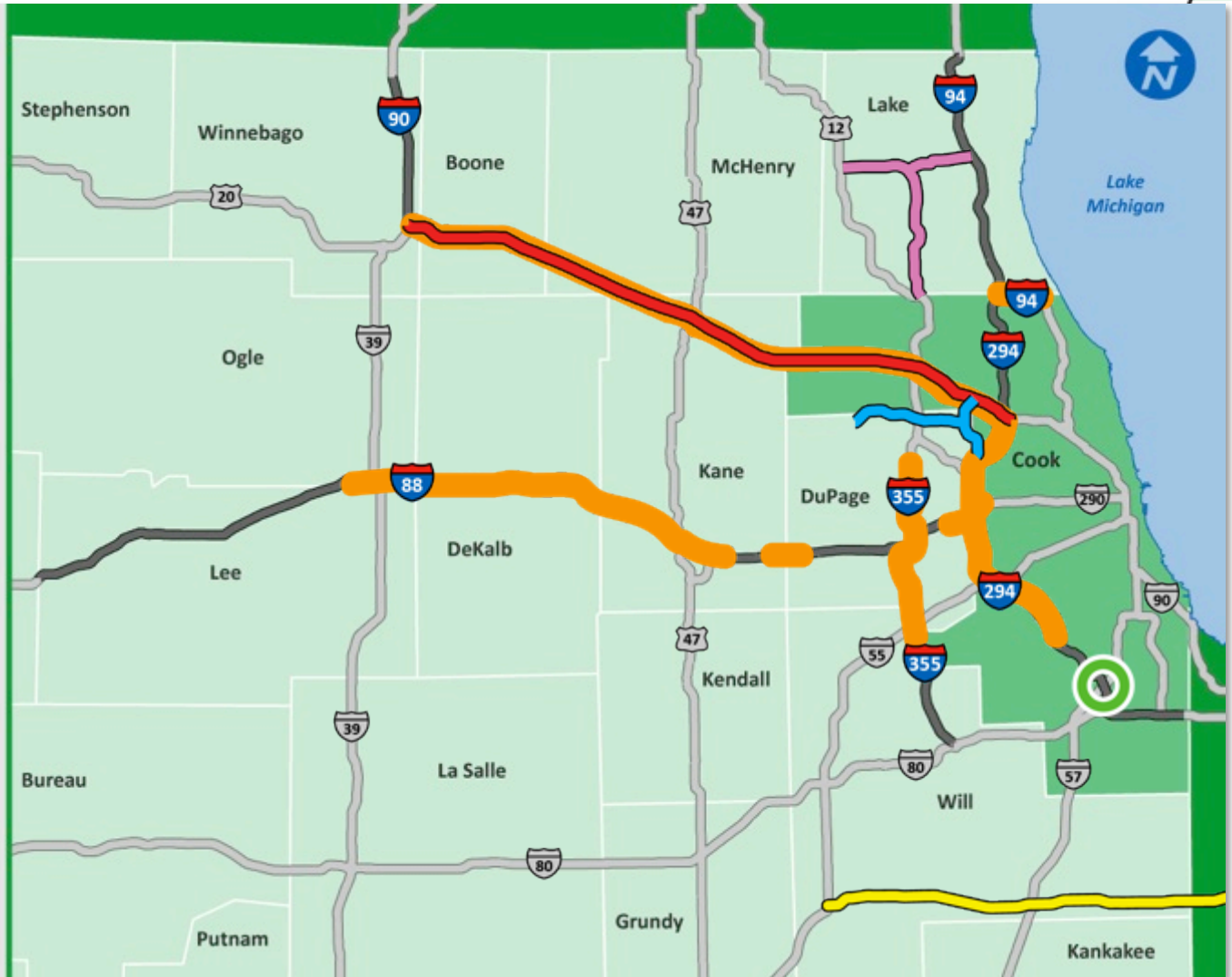
# Agenda

---

- ▶ ***Move Illinois* Program overview and update**
- ▶ **Jane Addams Memorial Tollway (I-90) Rebuilding and Widening Project update**
- ▶ **2013 completed work**
- ▶ **2014 construction**
- ▶ **Aesthetic improvements on bridges**
- ▶ **Lessons learned**

## 3

## ILLIANA EXPRESSWAY





# Move Illinois Progress

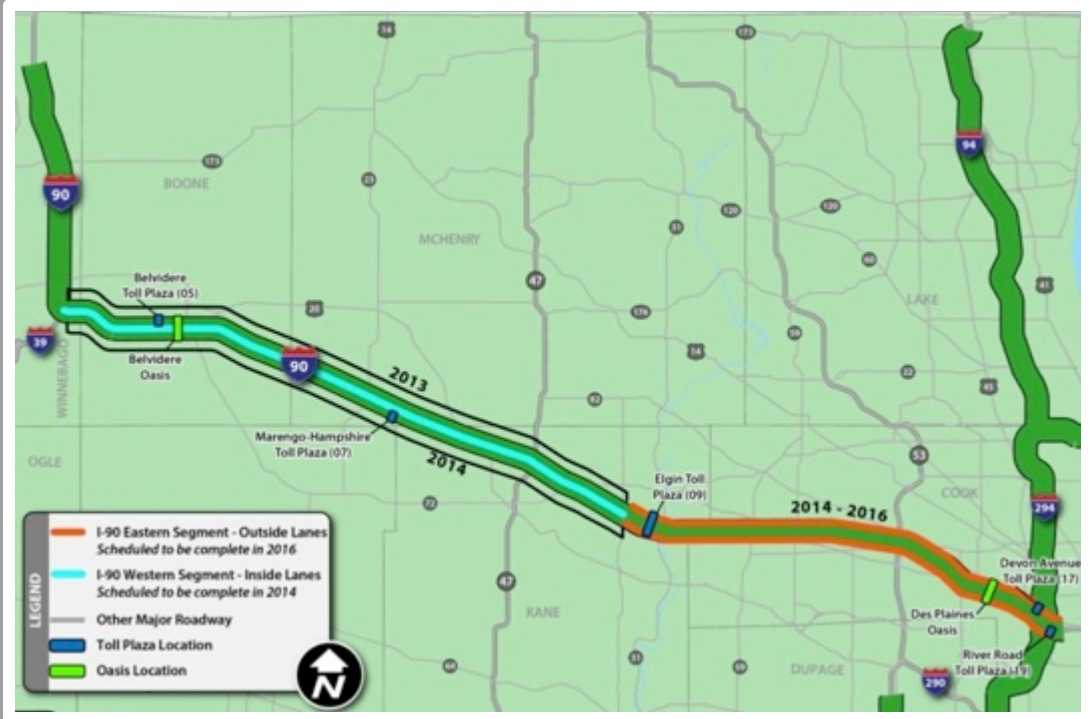
---

Click link for *Move Illinois* Progress [video](#)

# Jane Addams Memorial Tollway (I-90)

Rebuilding and widening I-90 as a 21st century, state-of-the-art corridor linking Rockford to O'Hare International Airport

- ▶ 62 miles of roadway improvements
- ▶ \$2.2 billion budget includes funds to incorporate transit in the corridor today and future transit plans



► **Rebuilding and widening eastbound lanes:**

- 
- LEGEND**
- Construction Work Zone
  - New Interchange Construction
  - IDOT Construction
  - Mainline Bridge Construction
  - Local Bridge Construction
  - Tollway Road
  - Oasis Location
  - Toll Plaza Location
  - Other Major Roadway

# Jane Addams Memorial Tollway (I-90)

## *2013 Local Crossroad Bridge Construction*

Crossroad bridges over I-90	Anticipated opening	Actual date opened
Mill Road	December 6, 2013	December 6, 2013
Irene Road	December 20, 2013	December 20, 2013
Stone Quarry Road	December 7, 2013	December 7, 2013
Brier Hill Road	December 16, 2013	December 16, 2013
Sandwald Road	December 7, 2013	December 7, 2013
Genoa Road (rescheduled to 2014)	Early to mid-June 2014	-
Getty Road	December 14, 2013	December 14, 2013
Powers Road	December 1, 2013	November 30, 2013

# Jane Addams Memorial Tollway (I-90)

## 2014 Local Crossroad Bridges

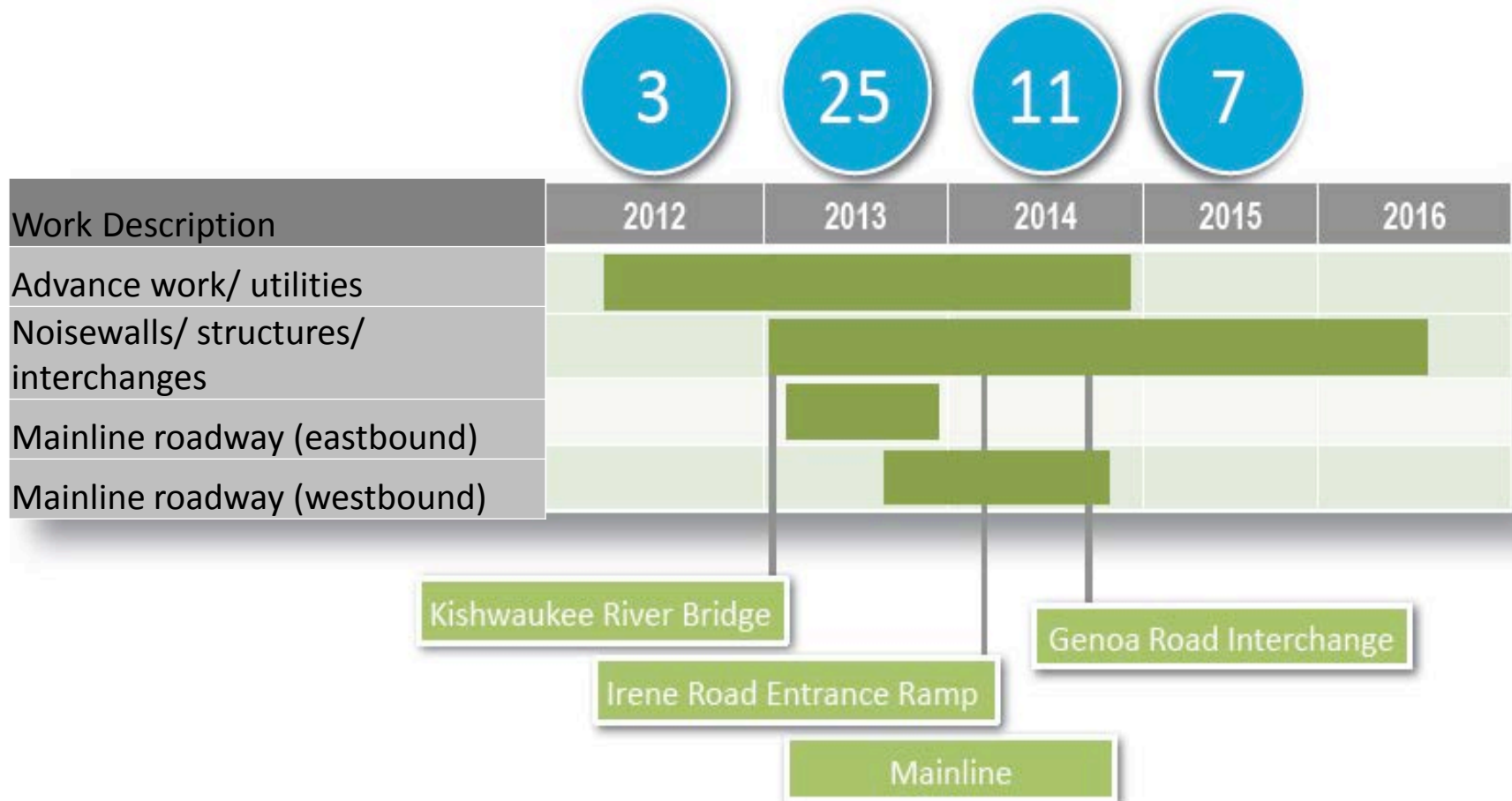
- ▶ **Town Hall Road\***
- ▶ **Pearl Street \***
- ▶ **Genoa Road \***
- ▶ **Johnson Road**
- ▶ **Shattuck Road**
- ▶ **County Line Road**
- ▶ **Harmony-Riley Road\***
- ▶ **Harmony Road\***
- ▶ **Hennig Road\***
- ▶ **Tyrell Road (staged construction)**



Powers Road Bridge, December 2013

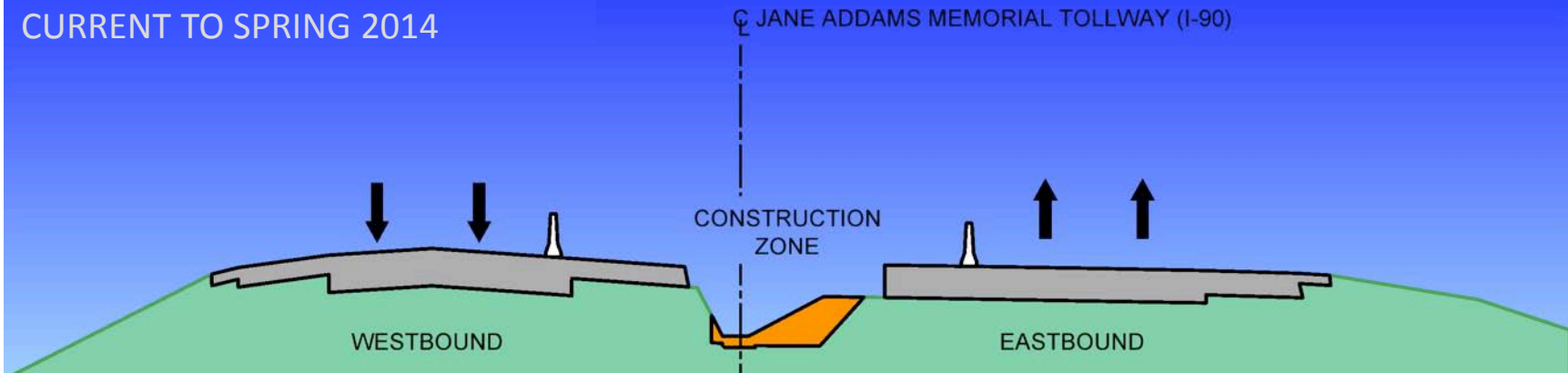
\* Detour route has been developed

# Western Segment Construction Contracts

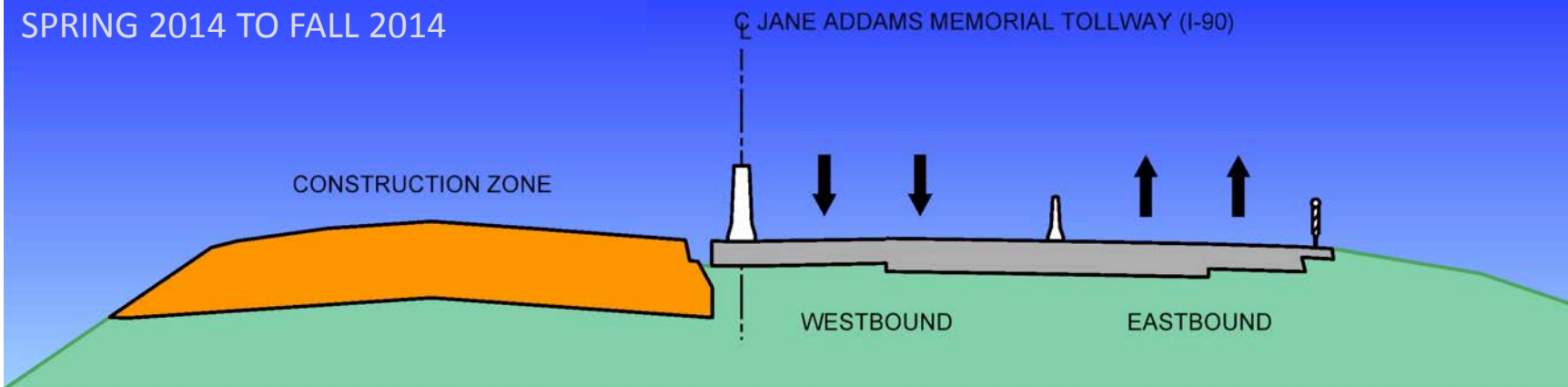


# Western Segment Maintenance of Traffic

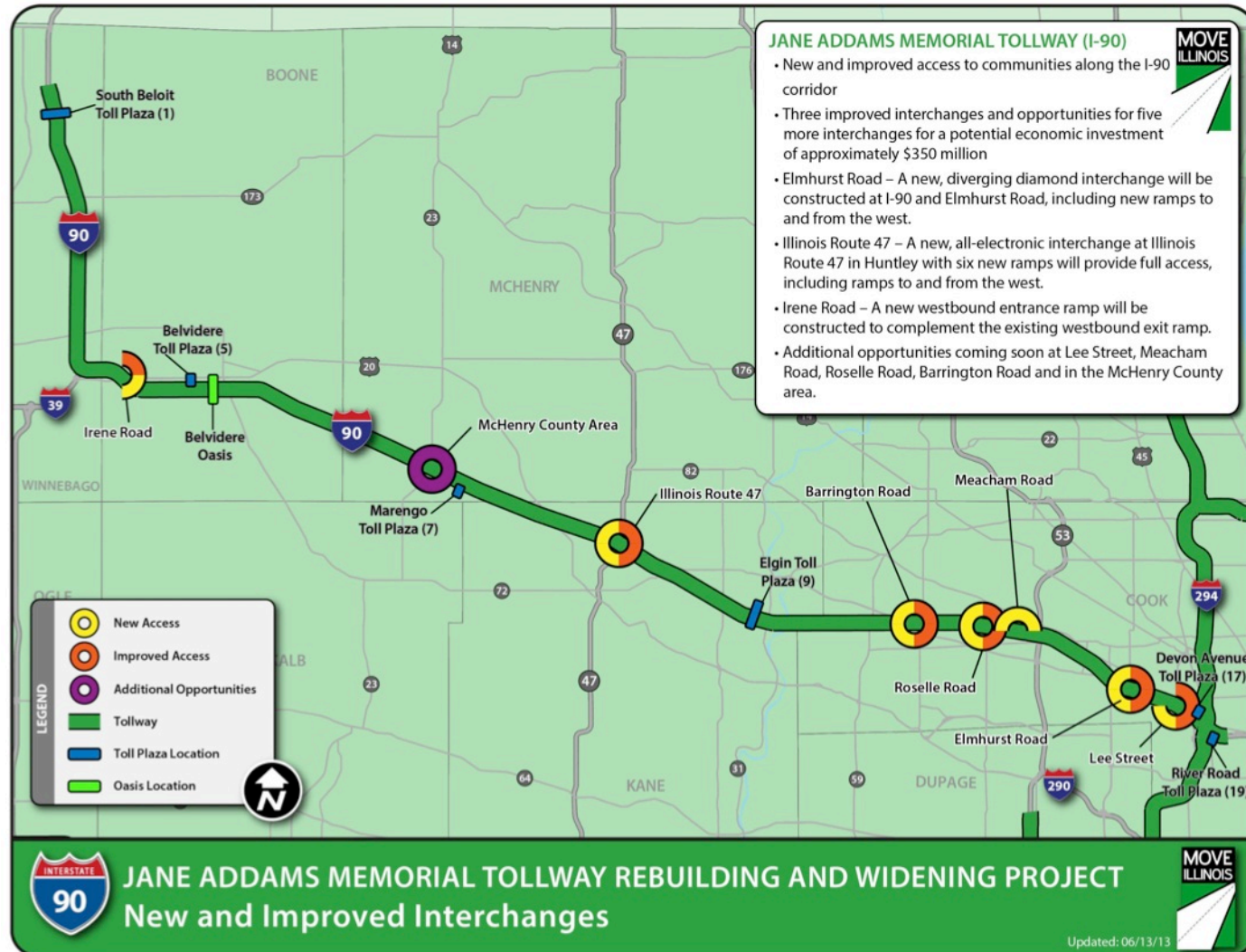
## STAGE I CURRENT TO SPRING 2014



## STAGE II SPRING 2014 TO FALL 2014



# Interchange Projects

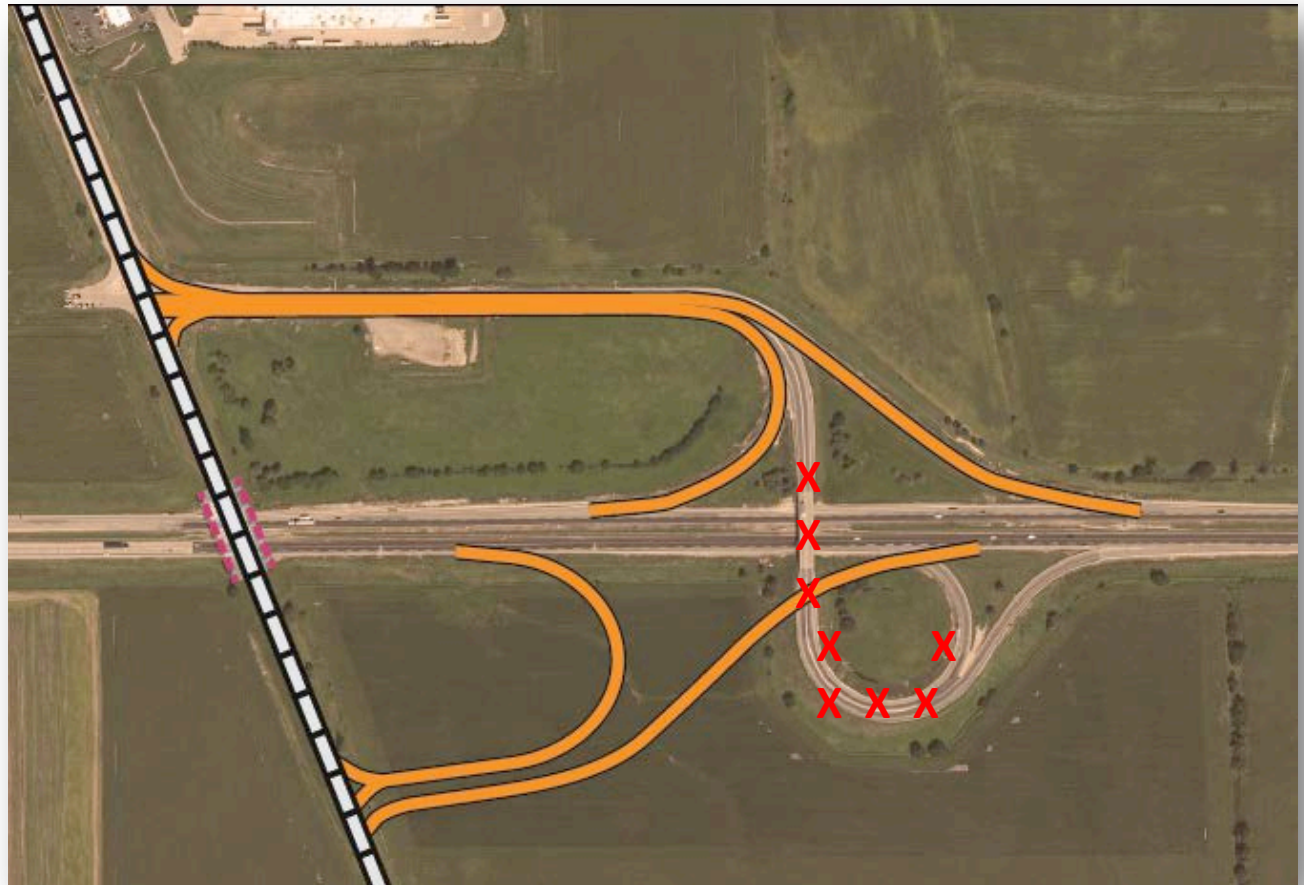


# Illinois Route 47 Interchange at I-90

- ▶ Provides a full-access interchange
- ▶ Total cost: \$59 million
- ▶ Completed November 8
- ▶ First “green” interchange on Tollway system
  - ▶ Geothermal piping system
  - ▶ Permeable pavement
  - ▶ LED ramp lighting
  - ▶ Bioswale for infield detention

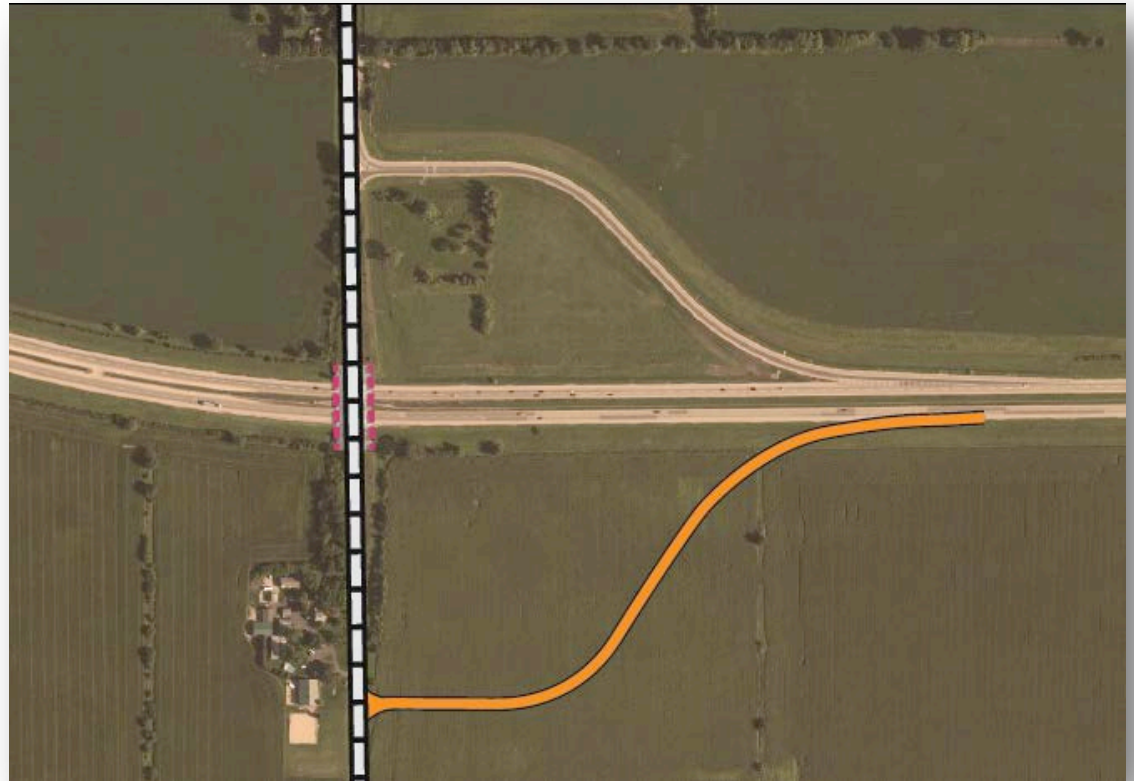


# Genoa Road Interchange



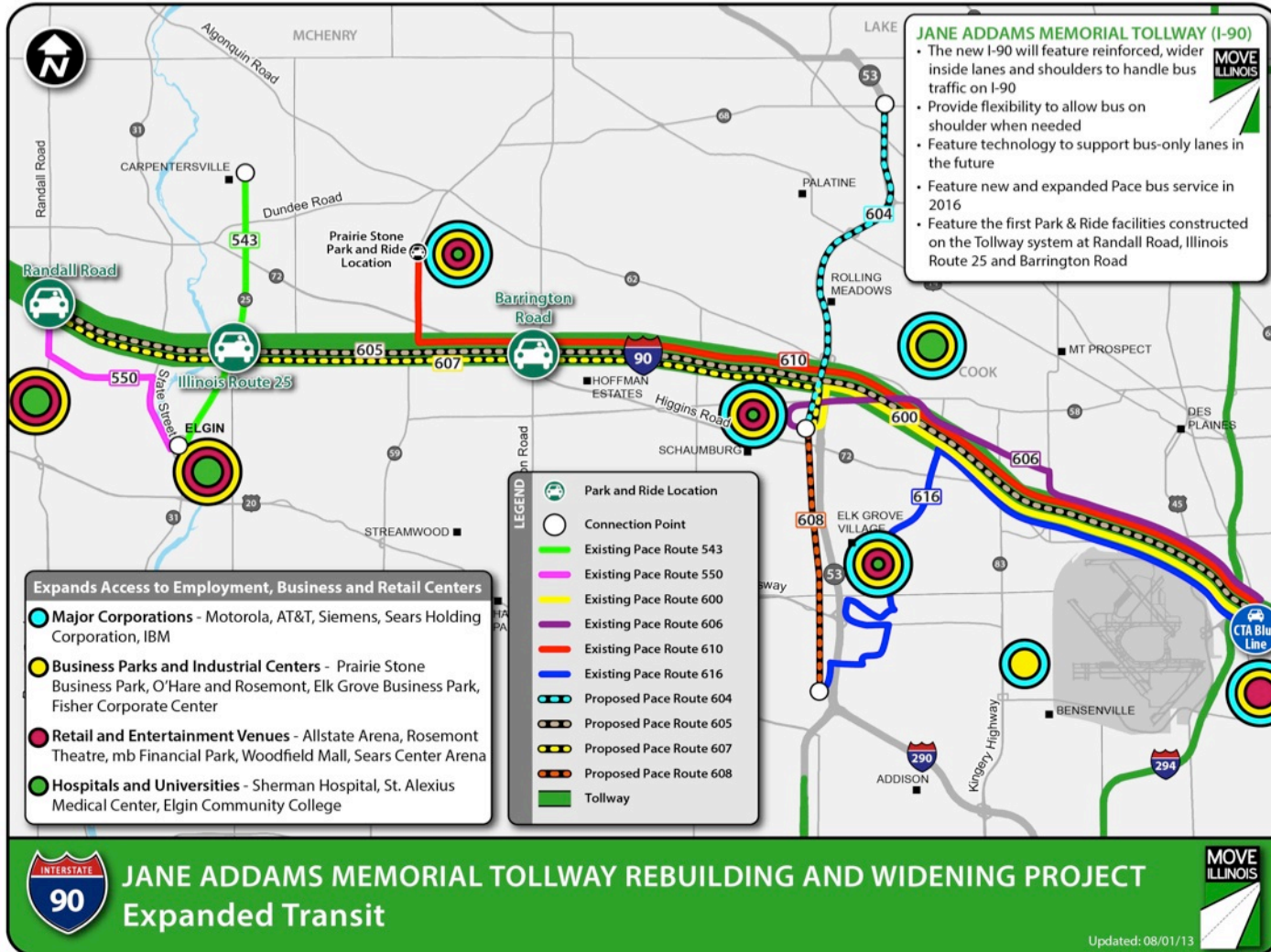
# Irene Road Interchange

- ▶ **New eastbound entrance ramp will complement the existing westbound exit ramp**
- ▶ **Partnership with Belvidere and Boone County**



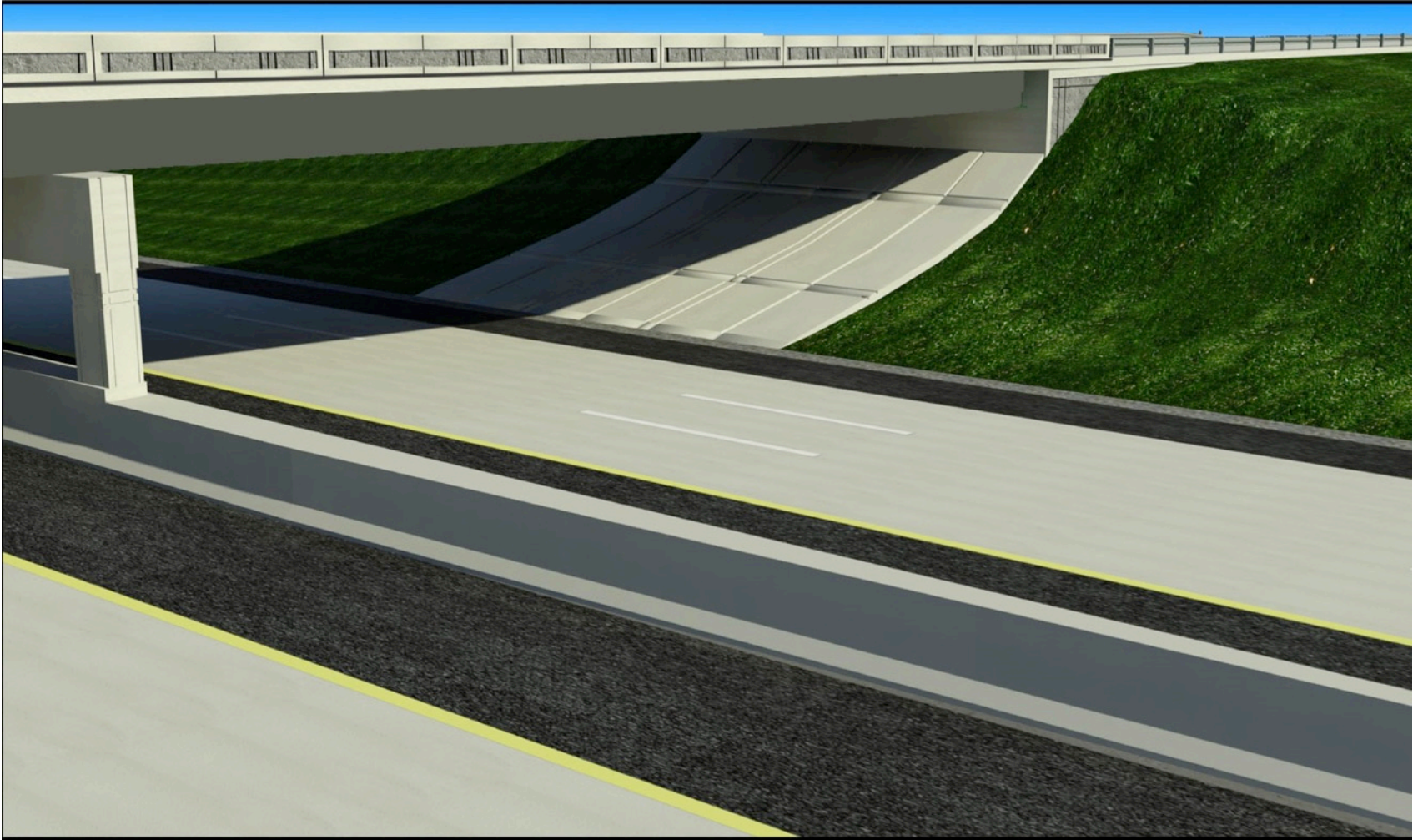
- 
- DRAFT**
- DRAFT**
- | DATE     | DESCRIPTION             | CONCEPT   | COUNT |
|----------|-------------------------|-----------|-------|
| 12/25/12 | BCP Tollway Partners JV | CONCEPT 1 | 1     |
| 12/25/12 | BB&A/CBREL/Primors      | CONCEPT 1 | 1     |
- THE ILLINOIS STATE TOLL HIGHWAY AUTHORITY  
8700 OGDEN AVENUE  
CHICAGO, IL 60632
- NO DATE DESCRIPTION COUNT
- PAGE AND NO REVISIONS

# Transit Along I-90 Corridor



# Aesthetic Opportunities on I-90

---



# Lessons Learned

---

- ▶ **Local roads**
- ▶ **Truck traffic**
- ▶ **Community engagement**
- ▶ **Work hours**



Sandwald Bridge, December 2013

# Moving Forward

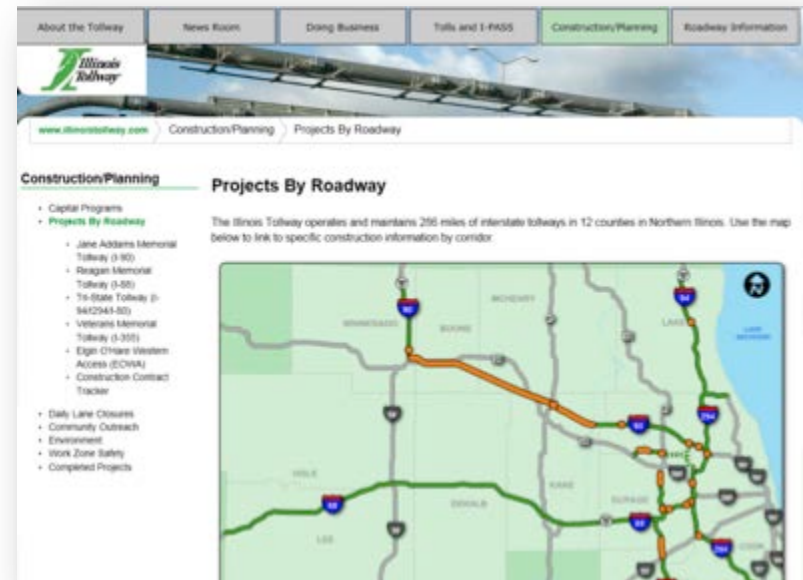
- ▶ **Rebuilding and widening work on I-90 continues**
- ▶ **Continued coordination**
  - ▶ Agencies
  - ▶ Communities
  - ▶ Public
- ▶ **Opportunities for business or community outreach**
- ▶ **Public open house meetings to be held in the first quarter of 2014**



# Getting Tollway Construction Information

The Illinois Tollway has a variety of ways customers can get the latest travel information, including:

- ▶ **[www.illinoistollway.com](http://www.illinoistollway.com)**
  - ▶ Construction/Planning section, Tollway Trip Calculator
- ▶ **1-800-TOLL-FYI**
  - ▶ Daily lane closure information
- ▶ **[www.travelmidwest.com](http://www.travelmidwest.com)**
  - ▶ Real-time travel times





---

# Questions?

---