



ILLINOIS TOLLWAY NEWS

FOR IMMEDIATE RELEASE
August 3, 2022

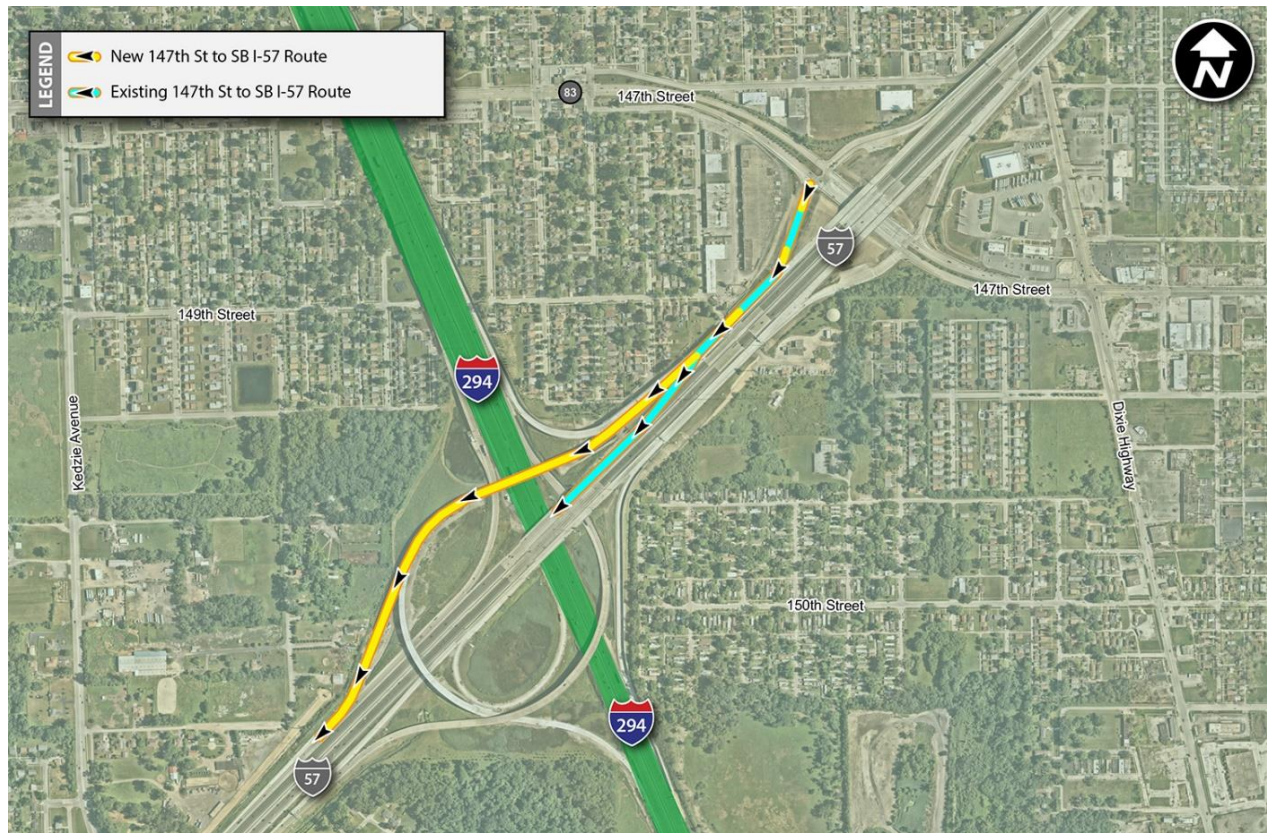
TRAFFIC SCHEDULED FOR NEW RAMP CONNECTING 147TH STREET TO SOUTHBOUND I-57 AS PART OF TRI-STATE TOLLWAY (I-294)/I-57 INTERCHANGE PROJECT

Work ongoing to complete new ramps creating access for traffic traveling to and from Chicago

DOWNERS GROVE, IL – Traffic shift is scheduled this week to provide access to the new ramp connecting 147th Street to southbound I-57 as the Illinois Tollway works to complete new ramps for travel to and from Chicago at the Tri-State Tollway (I-294)/I-57 Interchange Project.

Electronic message signs and construction signage will be put in place in advance to alert drivers to changes in traffic patterns and construction throughout the construction season. Up-to-date information regarding closures will be available in the Illinois Tollway's [Daily Construction Alert](#). All work is weather dependent.

Overnight on Friday, August 5, traffic traveling from 147th Street to southbound I-57 will be routed onto a newly constructed ramp that will carry traffic over I-294 and onto southbound I-57 bridge. Currently, ramp traffic from 147th Street merges on southbound I-57 in advance of I-294. The new ramp and interchange configuration are designed to reduce congestion and improve traffic flow in the area where the two interstates meet.



-more-

Once traffic is shifted, construction will continue to complete the work needed to open access to the full interchange. Work remaining includes barrier wall construction, shoulder paving and removal of temporary pavement, as well as other miscellaneous work.

In 2022, work on the I-294/I-57 Interchange Project includes the completion of the ramp connecting northbound I-294 to northbound I-57, the two ramps carrying southbound I-57 to I-294 and work to widen the CSX Railroad Bridge on I-57. Pavement and joint work will continue into 2023 at the 57 bridge over the railroad. In addition, the Illinois Department of Transportation is resurfacing I-57 in this area.

This work is part of the second phase of the I-294/I-57 Interchange Project, which includes building four new ramps to connect southbound I-57 to I-294 and 294 to northbound I-57, including the flyover ramp bridge. The flyover ramp bridge will carry traffic from southbound I-57 to southbound I-294 and from 147th to southbound I-57. The multi-span structure will be 2,649 feet long with a bridge deck approximately 16 feet above I-294 and 17 feet above I-57. Interchange construction is scheduled to be complete this year.

Additional work on this project includes the reconstruction of the I-57 median and the widening of the I-57 mainline, as well as drainage improvements, erosion and sediment control, retaining wall and bridge construction.

Maps and construction information about the Tri-State Tollway (I-294) I-57 Interchange Project is available in the Project's section on the Tollway's website at www.illinoistollway.com.

The \$719 million I-294/I-57 Interchange Project is funded by the Illinois Department of Transportation and the Illinois Tollway's 15-year, \$14 billion capital program, Move Illinois: The Illinois Tollway Driving the Future.

The new interchange is improving travel by providing customers with completed access between the two interstates. For the first time, the new I-294/I-57 Interchange provides motorists with access between I-294 and I-57, including a new interchange at 147th Street. The complete interchange will reduce congestion on local routes, enhance economic development and improve regional mobility. The all-electronic interstate-to-interstate connection better serves commuters and freight operators while opening access for local communities.

In 2022, new ramps with cashless tolling scheduled to open include the ramp connecting southbound I-57 to northbound I-294 and the ramp connecting southbound I-294 to northbound I-57. Customers can pay with I-PASS, E-ZPass or the Illinois Tollway's Pay By Plate service.

Existing tolled ramps at the interchange include the ramp connecting northbound I-57 to northbound I-294 and southbound I-294 to southbound I-57, as well as 147th Street to northbound I-294 and southbound I-294 to 147th Street. The regular toll rate is \$1.50 for customers who pay their unpaid tolls online within 14 days and a discounted rate of 75 cents offered to I-PASS or E-ZPass customers. Truck and trailer rates range from \$1.50 to \$4.00 during daytime hours, with overnight discounts offered.

Work Zone Safety

Construction zone speed limits are in effect in all construction zones 24/7 and drivers should continue to watch for changing traffic patterns and use caution, especially when workers are present.

The Illinois Tollway reminds motorists that the “Move Over Law” requires motorists to change lanes or to slow down and proceed with caution when passing any vehicle on the side of the road with hazard lights activated. If you see flashing lights ahead, please move over or slow down.

Illinois State Police have zero tolerance for drivers speeding in work zones or failure to comply with the Move Over Law. The minimum penalty for speeding in a work zone is \$250 with up to a \$25,000 fine and a 14-year jail sentence for hitting a roadway worker. Penalties for failure to slow down or move over for a vehicle on the shoulder with flashing lights includes up to a \$10,000 fine, 2-year suspension of driving privileges and jail time, in extreme cases.

About Move Illinois

The Illinois Tollway’s 15-year, \$14 billion capital program, *Move Illinois: The Illinois Tollway Driving the Future*, is improving mobility, relieving congestion, reducing pollution, creating as many as 120,000 jobs and linking economies throughout the region. The first 10 years of *Move Illinois* are on schedule and within budget, delivering the rebuilt and widened Jane Addams Memorial Tollway (I-90) as a state-of-the-art 21st century corridor and opening a new interchange connecting the Tri-State Tollway (I-294) to I-57. Progress continues on projects addressing the remaining needs of the existing Tollway system, delivering the Elgin O’Hare Western Access Project and reconstruction of the Central Tri-State Tollway (I-294).

About the Illinois Tollway

The Illinois Tollway is a user-fee system that receives no state or federal funds for maintenance and operations. The agency maintains and operates 294 miles of roadways in 12 counties in Northern Illinois, including the Reagan Memorial Tollway (I-88), the Veterans Memorial Tollway (I-355), the Jane Addams Memorial Tollway (I-90), the Tri-State Tollway (I-94/I-294/I-80) and the Illinois Route 390 Tollway.

###