



FOR IMMEDIATE RELEASE
October 3, 2018

OVERNIGHT RAMP CLOSURES SCHEDULED NEXT WEEK AT DEKALB OASIS FROM WESTBOUND REAGAN MEMORIAL TOLLWAY (I-88)

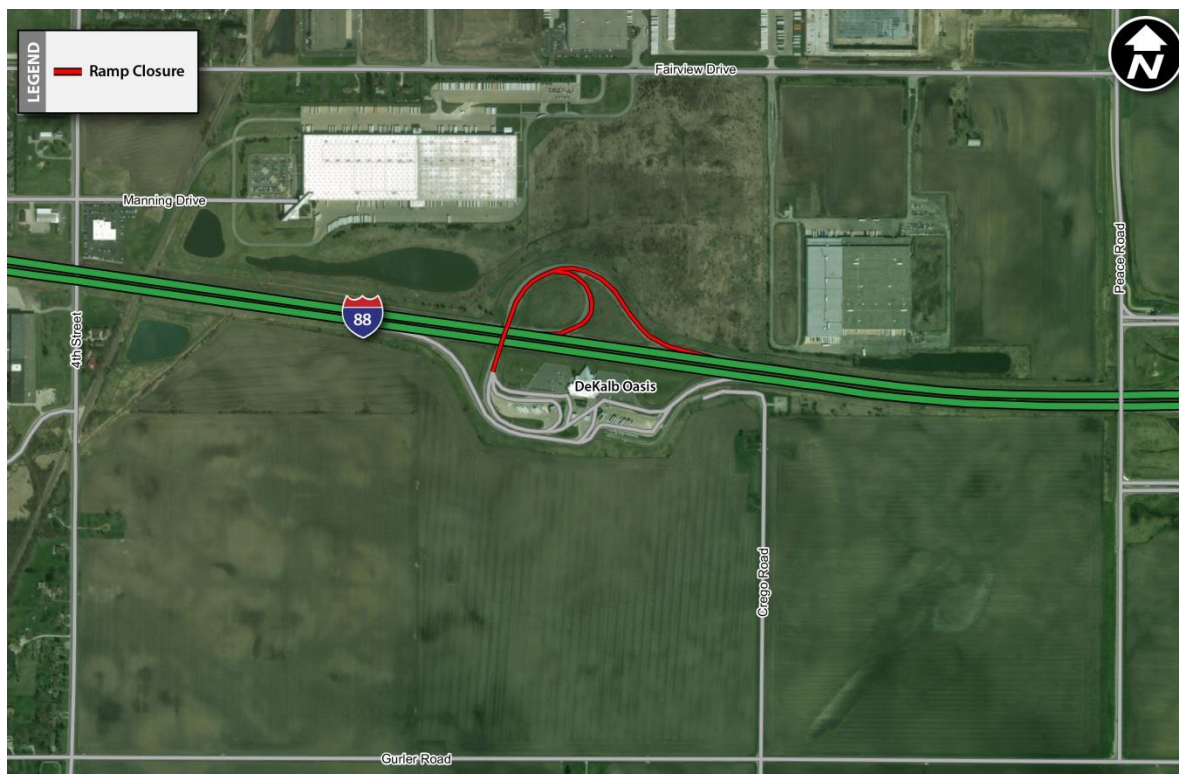
Four nights of westbound ramp closures needed to complete bridge repairs; eastbound I-88 access to oasis will remain open

DOWNERS GROVE, IL – Overnight ramp closures are scheduled next week at the DeKalb Oasis on the Reagan Memorial Tollway (I-88) for bridge repair work. Access to and from the oasis from will be restricted over four nights for westbound I-88 traffic only. The oasis will remain open during the overnight construction with the oasis ramp from eastbound I-88 open to traffic.

Electronic message signs and construction signage will be put in place to alert drivers. The closures are needed for repair work to the single-lane ramp bridge over I-88. All work is weather dependent.

The ramp closures will be put in place nightly from 10 p.m. to 5 a.m. beginning Monday, October 8, through Thursday, October 11, with bridge repair work scheduled to be complete by 5 a.m. on Friday, October 12. Both the westbound on and off ramps will be closed to traffic.

During the overnight oasis ramp closures, drivers in need of fuel or food will be able to exit at either Peace Road to the east or Annie Glidden Road to the west of the oasis.



The Illinois Tollway has scheduled work to resurface and rebuild ramps and bridges at six interchanges on I-88 between Illinois Route 251 and Orchard Road, plus the ramp bridge at the DeKalb Oasis. Maps and construction information about the I-88 Interchange Improvements is available on the Tollway's website at Illinoistollway.com via the Interactive Tollway map and under "Projects Overview" in the Explore Projects section.

In addition, throughout 2018 traffic on I-88 in this area will be reduced from two lanes to one in each direction for a roadway resurfacing project. The shoulders on this segment of I-88 are too narrow to safely accommodate traffic shifts and provide for work zones. The improvements on I-88 will extend the life of the roadway and interchanges improving travel in the area and providing convenient access to local communities and support economic opportunities. This work is part of the Tollway's 15-year, \$14 billion capital program, *Move Illinois: The Illinois Tollway Driving the Future*.

Construction is being coordinated with the Illinois Department of Transportation, City of DeKalb, DeKalb County, Kane County, Ogle County, Dement Township, Malta Township, DeKalb Township, City of Rochelle, Pierce Township, Kaneville Township, Village of Sugar Grove and Cortland Township, as well as local fire and police departments and Northern Illinois University.

Work Zone Safety

The Illinois Tollway is committed to ensuring that the Reagan Memorial Tollway (I-88) and other area roadways remain safe for both drivers and workers during construction, which is part of the agency's overall commitment to roadway safety.

Construction zone speed limits are in effect in all construction zones 24/7 and drivers should continue to watch for changing traffic patterns and use caution, especially when workers are present. On I-88, a 45 mph work zone speed limit is in effect throughout the construction season.

The Illinois Tollway reminds motorists that the "Move Over Law" requires motorists to change lanes or to slow down and proceed with caution when passing any vehicle on the side of the road with hazard lights activated. If you see flashing lights ahead, please move over or slow down.

Illinois State Police have zero tolerance for drivers speeding in work zones or failure to comply with the Move Over Law.

The minimum penalty for speeding in a work zone is \$375. Posted signs advise drivers of a \$10,000 fine and a 14-year jail sentence for hitting a roadway worker.

Penalties for failure to slow down or move over for a vehicle on the shoulder with flashing lights includes up to a \$10,000 fine, 2-year suspension of driving privileges and jail time, in extreme cases.

Getting Tollway Construction Information

The Illinois Tollway has a variety of ways customers can get the latest travel information, including:

- Illinoistollway.com – Explore Projects section, live roadway images and real-time roadway incident information.
- [Daily construction alerts](#) — Daily and long-term lane and shoulder closure schedules.
- Travelmidwest.com – Real-time travel times.
- Twitter.com – Real-time roadway incident information at Tollway Trip 90, Tollway Trip 88, Tollway Trip 355, Tollway Trip 94/294 and Tollway Trip 390.

About Move Illinois

The Illinois Tollway's 15-year, \$14 billion capital program, *Move Illinois: The Illinois Tollway Driving the Future*, is improving mobility, relieving congestion, reducing pollution, creating as many as 120,000 jobs and linking economies throughout the region. The first six years of *Move Illinois* are on schedule and within budget, delivering the new Illinois Route 390 Tollway and a rebuilt and widened Jane Addams Memorial Tollway (I-90) with its new SmartRoad corridor, as well as opening a new interchange

connecting the Tri-State Tollway (I-294) to I-57. Progress continues on projects addressing the remaining needs of the existing Tollway system, delivering the new I-490 Tollway Project and reconstruction of the Central Tri-State Tollway (I-294) and planning for emerging projects.

About the Illinois Tollway

The Illinois Tollway is a user-fee system that receives no state or federal funds for maintenance and operations. The agency maintains and operates 294 miles of roadways in 12 counties in Northern Illinois, including the Reagan Memorial Tollway (I-88), the Veterans Memorial Tollway (I-355), the Jane Addams Memorial Tollway (I-90), the Tri-State Tollway (I-94/I-294/I-80) and the Illinois Route 390 Tollway.

#