



ILLINOIS TOLLWAY NEWS

FOR IMMEDIATE RELEASE
July 2, 2019

NEW TRAFFIC SHIFT SCHEDULED TO BEGIN NEXT WEEK ON REAGAN MEMORIAL TOLLWAY (I-88) FOR RECONSTRUCTION PROJECT

Eastbound traffic scheduled to shift on I-88 between I-290 and York Road

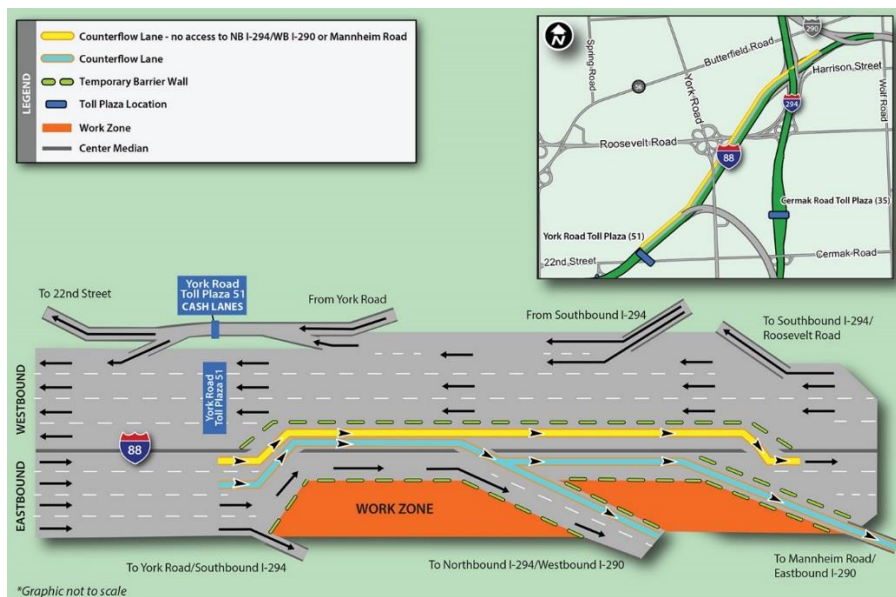
DOWNERS GROVE, IL – A new eastbound traffic shift is scheduled to begin next week to continue the reconstruction and widening of the Reagan Memorial Tollway (I-88) between the Eisenhower Expressway (I-290) and York Road in Oak Brook.

Electronic message signs and construction signage will be put in place to alert drivers in advance of work that will have an impact on traffic in both directions on I-88. More than 130,000 vehicles use this stretch of I-88 daily.

“The Illinois Tollway is committed to ensuring the roadway remains safe for both drivers and workers during construction, which is part of our overall commitment to roadway safety,” said Illinois Tollway Executive Director José Alvarez. “We ask drivers to be attentive in work zones by watching for changing traffic patterns and using caution, especially when workers are present.”

Beginning the week of July 8, a new traffic configuration will maintain three lanes of traffic in the eastbound direction with one lane between York Road and I-290 on the eastbound side of the roadway shifted to the left to allow for a workzone on the right and two eastbound lanes shifted onto the westbound side of the road. Those traveling in the left lane on the westbound side will be in an express lane to eastbound I-290.

Westbound will remain unchanged from the current configuration with all westbound traffic shifted to the right and at least two lanes of traffic available to customers.



Traffic is scheduled to remain in this configuration through summer. All work is weather dependent, and additional traffic shifts will continue as roadway construction progresses. Reconstruction of the eastbound side of I-88 is scheduled to be complete this year.

The Illinois Tollway is committed to ensuring that I-88 remains safe for both drivers and workers during construction, which is part of the agency's overall commitment to roadway safety. A 45 mph work zone speed limit will be in effect in areas with construction on I-88.

The I-88 Reconstruction Project will extend the life of the roadway, increase traffic capacity and provide safe and convenient travel for Tollway customers. In addition, to rebuilding and widening I-88, the two-year project also includes rebuilding and widening the York Road Bridge and repair and widening of the I-88 bridges over Roosevelt Road, which were completed in 2018, as well as improvements on the ramps connecting I-88 and I-294 and noisewall construction adjacent to residential areas.

The project is being coordinated with the Illinois Department of Transportation, the Village of Oak Brook, the City of Elmhurst, Village of Hillside, York Township and DuPage County, as well as local fire and police departments. The project is funded by the Tollway's *Move Illinois* Program.

Maps and construction information about the I-88 Roadway Reconstruction Project is available on the Tollway's website at illinoistollway.com via the Interactive Tollway map and under "Projects Overview" in the Projects section.

About *Move Illinois*

The Illinois Tollway's 15-year, \$14 billion capital program, *Move Illinois: The Illinois Tollway Driving the Future*, is improving mobility, relieving congestion, reducing pollution, creating as many as 120,000 jobs and linking economies throughout the region. The first seven years of *Move Illinois* is on schedule and within budget, delivering the rebuilt and widened Jane Addams Memorial Tollway (I-90) as a state-of-the-art 21st century corridor and opening a new interchange connecting the Tri-State Tollway (I-294) to I-57. Progress continues on projects addressing the remaining needs of the existing Tollway system, delivering the Elgin O'Hare Western Access Project and planning for emerging projects, including reconstruction of the Central Tri-State Tollway (I-294).

About the Illinois Tollway

The Illinois Tollway is a user-fee system that receives no state or federal funds for maintenance and operations. The agency maintains and operates 294 miles of roadways in 12 counties in Northern Illinois, including the Reagan Memorial Tollway (I-88), the Veterans Memorial Tollway (I-355), the Jane Addams Memorial Tollway (I-90), the Tri-State Tollway (I-94/I-294/I-80) and the Illinois Route 390 Tollway.

###